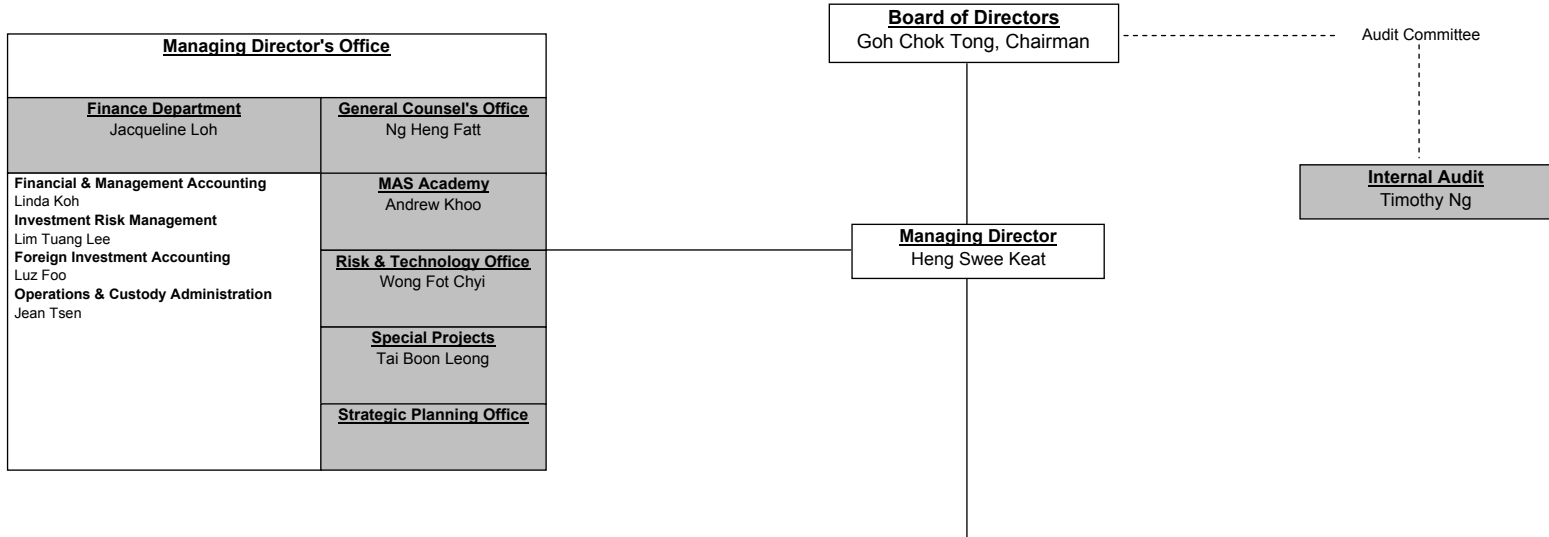




# Monetary Authority of Singapore Organisation Chart

As at 1 October 2008



Monetary Policy, Investment & Research Ong Chong Tee Khor Hoe Ee(Economics)		Development & External Relations Ong Chong Tee		Prudential Supervision Teo Swee Lian		Market Conduct Shane Tregillis		Currency & Corporate Resource Foo-Yap Siew Hong	
<b>Economic Policy</b> Edward Robinson	<b>External</b> Leong Sing Chiong	<b>Banking Supervision</b> Leo Mun Wai	<b>Insurance Supervision</b> Low Kwok Mun	<b>Capital Markets</b> Andrew Khoo	<b>Corporate Services</b> Bernard Yeo	<b>Human Resource</b> Winnifred Chen			
<b>External Economies</b> Ng Bok Eng	<b>Communications</b> Angelina Fernandez	<b>Division I</b> Aw Kian Huat	<b>Division I</b> Khoo Kay Hwee	<b>Consumer Issues</b> Christina Tan	<b>Logistics, Administration &amp; Event Management</b> Maggie Tan	<b>HR Development</b> Ho Hem Shin			
<b>Information Resource Centre</b> Susan Song-Lim	<b>Financial Services Cooperation</b> Kristol Poh	<b>Division II</b> Teo Lay Har	<b>Division II</b> Loo Pauy Liean	<b>Corporate Finance</b> Loo Siew Yee	<b>Property &amp; Building Services</b> Yap Soon Guan	<b>HR Management</b> Lee Keng Yi			
<b>Modelling &amp; Economic Analysis</b> Ng Bok Eng	<b>International &amp; Regional Relations</b> Valerie Tay	<b>Division III</b> Low Yin Fong	<b>Division III</b> Beng Du Maniar	<b>Enforcement</b> Tan Boon Gin	<b>Information Technology</b> Huay Khee Chuang	<b>Applications</b> Yuen Keng Yin			
<b>Domestic Surveillance &amp; Forecasting</b> Celine Sia	<b>Financial Centre Development</b> Ng Nam Sin	<b>Division IV</b> Diane Leong	<b>Prudential Policy</b> Chia Der Jiun	<b>Market Conduct Policy</b> Gary Tan	<b>Security</b> Lee Hoe Hin	<b>Data Centre</b> Huay Khee Chuang			
<b>Macroeconomic Surveillance</b> Chia Der Jiun	<b>Asset Management</b> Winnie Lim	<b>Supervisory Methodologies Unit</b>	<b>Capital Policy</b> Adrian Chua	<b>Marks &amp; Clearing Houses</b> Neo Boon Sim	<b>Currency</b> Ho Kwen Chan	<b>IT Infrastructure</b> Liew Lye Ha			
	<b>Business Development</b> Ong Puay See	<b>Complex Institution Supervision</b> Lee Boon Ngiap	<b>Prudential Advisory</b> Teo Kok Ming	<b>Capital Markets Intermediaries</b> Lam San Ling	<b>Coins &amp; Business Excellence</b> Low Siang Kok	<b>IT Security</b> David Ng			
<b>Reserve &amp; Monetary Management</b> Lee Chuan Teck	<b>Strategic Development</b> Paul Yuen	<b>Division I</b> Tan Yee Theng	<b>Regulatory Framework Development</b> Ng Chuin Hwei	<b>Markets &amp; Clearing Houses</b> Neo Boon Sim	<b>Notes &amp; Services</b> Martin Teo				
<b>Monetary Management</b> Luke Goh	<b>Financial Markets Strategy</b> Kola Luu	<b>Division II</b> Wan Aik Chye	<b>Specialist Risk Supervision</b> Chua Kim Leng	<b>Capital Markets Intermediaries</b> Lam San Ling	<b>Payment Systems Unit</b> Martin Teo				
<b>External Fund Management</b> Celestine Khoo	<b>Product</b> Victor Lee	<b>Division III</b> Goh Gin Choo	<b>Financial Risk</b> Shaji Chandrasenan	<b>Division I</b> Alvin Seah					
<b>Internal Fund Management</b> Cheryl Tan	<b>Sector</b> Angeline Koh		<b>Payment Infrastructure</b> Terry Goh	<b>Division II</b> Christina Aw					
<b>Global Fixed Income</b> Yap Chuin Houi			<b>Technology Risk</b> Tony Chew	<b>Division III</b> Merlyn Ee					
<b>Foreign Exchange, Liquidity &amp; Gold</b> Leong Whye Wah									
<b>International Operations - New York Office</b>									
<b>International Operations - London Office</b>									