

# MONETARY AUTHORITY OF SINGAPORE

---

## MONTHLY STATISTICAL BULLETIN

---

*January 2009*

*Co-ordinated by:*

**Macroeconomic Surveillance Department  
Monetary Authority of Singapore  
MAS Building, 10 Shenton Way  
Singapore 079117  
Republic of Singapore**

## CONTENTS

Highlights of Monetary and Financial Developments .....	5	
<i>STATISTICAL SECTION</i>		
<b>I</b>	<b>MONEY AND BANKING</b>	
I.1	Money Supply .....	9
I.2A	Monetary Survey .....	10
I.2B	Monetary Authorities: Assets and Liabilities .....	11
I.3A	Banks: Assets and Liabilities of Domestic Banking Units.....	12
I.3B	Banks: Assets of Domestic Banking Units.....	13
I.3C	Banks: Liabilities of Domestic Banking Units.....	16
I.4	Banks: Deposits (excluding S\$NCDs) of Domestic Banking Units by Types of Non-bank Customers.....	17
I.5A	Banks: Loans and Advances of Domestic Banking Units to Non-bank Customers by Industrial Classification .....	19
I.5B	Banks: Loans and Advances of Asian Currency Units to Non-bank Customers by Industrial Classification .....	21
I.6	Banks: Limits Granted and Percentage Utilised for Loans and Advances to Non-bank Customers by Industrial Classification.....	23
I.7	Banks: Types of Loans and Advances of Domestic Banking Units to Non-bank Customers .....	25
I.8	Banks: Statutory Liquidity Position of Domestic Banking Units .....	26
I.9	Banks: Domestic Banking Units External Assets and Liabilities .....	27
I.10	Banks: Combined Assets and Liabilities of Domestic Banking Units (DBUs) and Asian Currency Units (ACUs) .....	28
I.11	Asian Dollar Market: Assets of Asian Currency Units .....	29
I.12	Asian Dollar Market: Liabilities of Asian Currency Units .....	30
I.13	Asian Dollar Market: Maturities of Assets and Liabilities of Asian Currency Units .....	31
I.14	Asian Dollar Market: Interbank and Non-bank Funds by Selected Regions .....	32
I.15	Credit and Charge Card Statistics .....	34
<b>II</b>	<b>NON-BANK FINANCIAL INSTITUTIONS</b>	
II.1	Finance Companies: Assets and Liabilities .....	35
II.2	Finance Companies: Loans and Advances .....	36
II.3	Merchant Banks: Assets and Liabilities of Domestic and Asian Currency Unit Operations .....	37
II.4	Merchant Banks: Assets and Liabilities of Domestic Unit Operations .....	38
II.5	Insurance Companies: Assets .....	39
II.6	General Insurance Companies: Premiums and Claims .....	41
II.7	Life Insurance Companies: New Business .....	42
II.8	Life Insurance Companies: Business in Force .....	43
<b>III</b>	<b>FINANCIAL MARKETS</b>	
III.1A	Exchange Rates .....	44
III.1B	Daily Exchange Rates and Forward Swap Points for US\$/S\$.....	46
III.2	Foreign Exchange Market Turnover .....	47
III.3	Domestic Interest Rates .....	48
III.4	Interest Rates of Banks and Finance Companies .....	49
III.5	Singapore Government Securities (SGS): Issuance, Redemption and Outstanding Amount .....	50
III.6	Singapore Government Securities (SGS) : Prices and Yields .....	51
III.7	Singapore Government Securities (SGS) : Average Daily Turnover Volume .....	52

III.8	Singapore Exchange Securities Trading Ltd (SGX-ST): Price Index, Number of Listed Companies, Turnover and Capitalisation .....	54
III.9	Singapore Exchange Derivatives Trading Ltd (SGX-DT): Turnover and Open Interest (Futures and Options) .....	55
<b>IV</b>	<b>KEY ECONOMIC INDICATORS</b>	
IV.1	Gross Domestic Product by Sector .....	56
IV.2	Gross Domestic Product by Expenditure .....	57
IV.3	Consumer Price Index .....	58
IV.4	Other Price Indices .....	59
IV.5	Government Finance .....	60
IV.6	Balance of Payments .....	61
IV.7	Official Foreign Reserves .....	62
	Glossary .....	63

## **ABBREVIATIONS AND SYMBOLS**

p	: preliminary
r	: revised
..	: negligible
—	: nil
n.a.	: not available
S\$NCD	Singapore dollar negotiable certificates of deposit
SIBOR	Singapore inter-bank offered rate
REPO	Repurchase agreement
T-BILL	Treasury bill

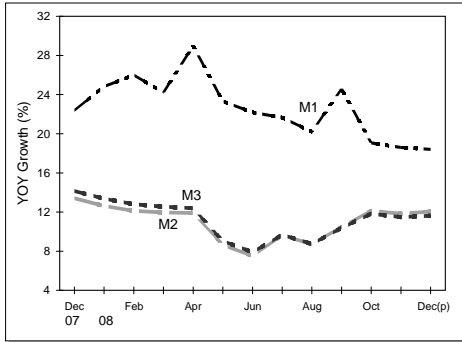
## **NOTE TO STATISTICAL TABLES**

Due to rounding, the sum of separate items may differ from the totals shown.

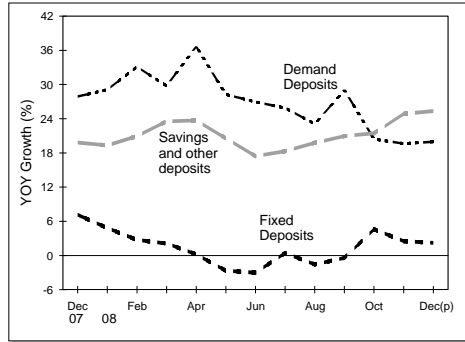
# Highlights of Monetary and Financial Developments

## MONEY SUPPLY

**Monetary Aggregates**

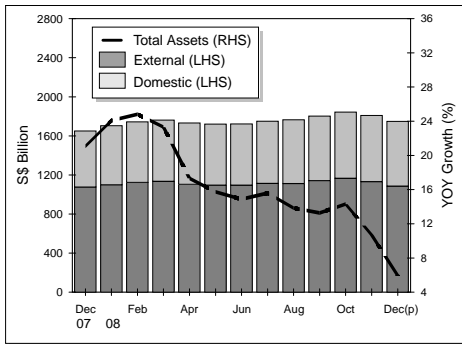


**Components of Money**

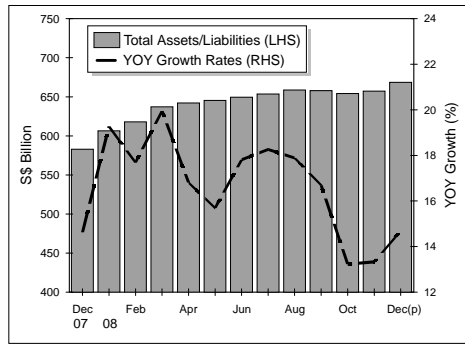


## BANKS

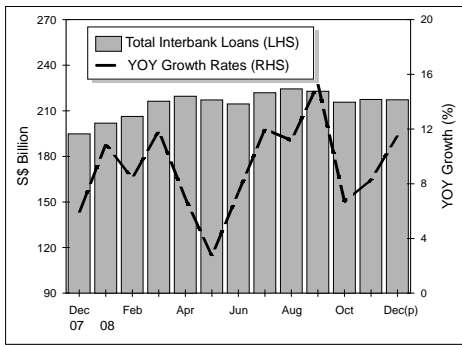
**Combined Assets of DBUs and ACUs<sup>1</sup>**



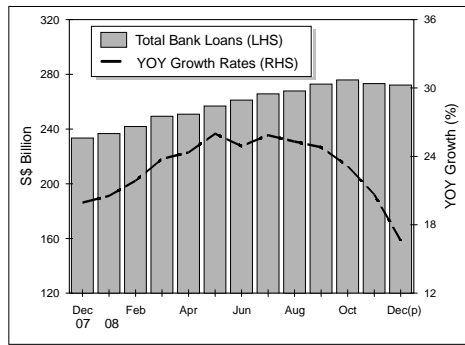
**Assets/Liabilities of DBUs**



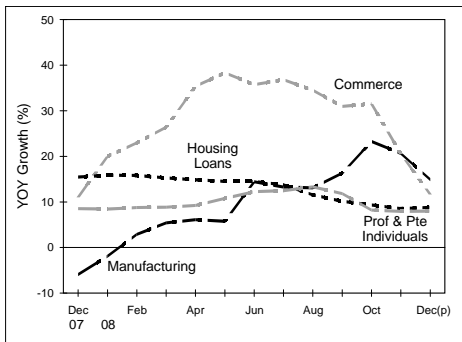
**DBUs' Interbank Loans**



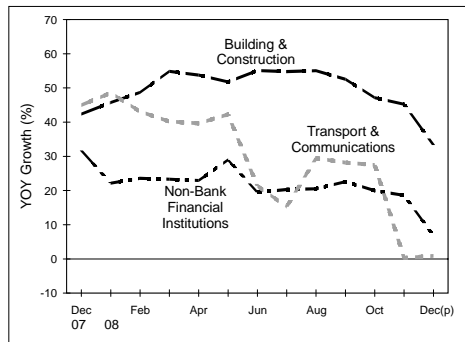
**DBUs' Loans to Non-bank Customers**



**DBUs' Non-bank Loans by Sector (i)**

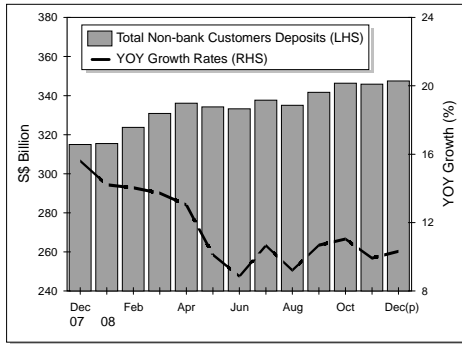


**DBUs' Non-bank Loans by Sector (ii)**

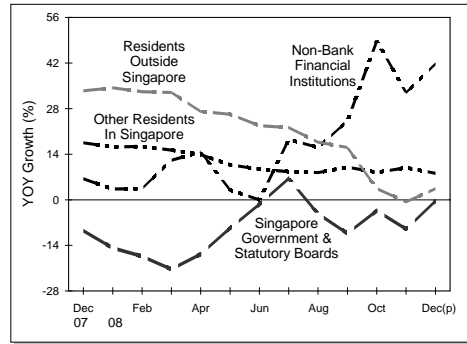


<sup>1</sup> Excluding inter-unit transactions.

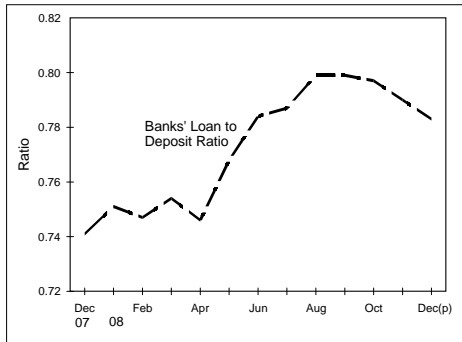
### DBUs' Non-bank Customers' Deposits



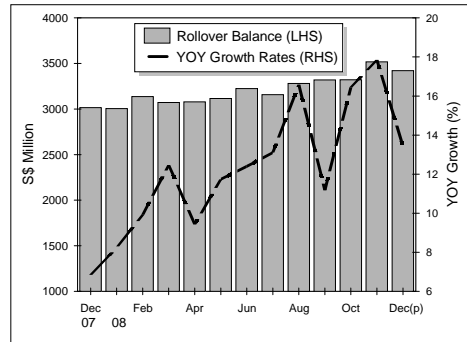
### DBUs' Non-bank Deposits by Type of Customers



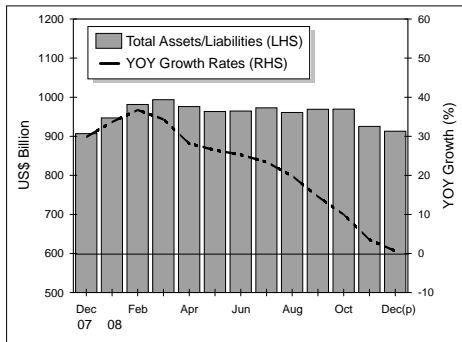
### Loan-to-Deposit Ratio



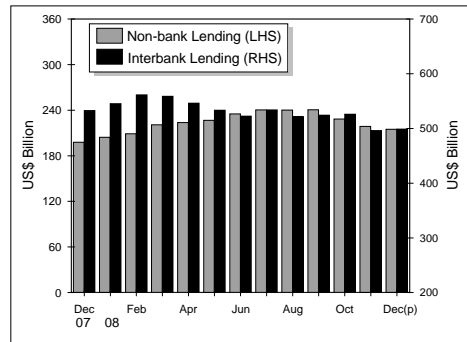
### Credit Card Rollover Balance



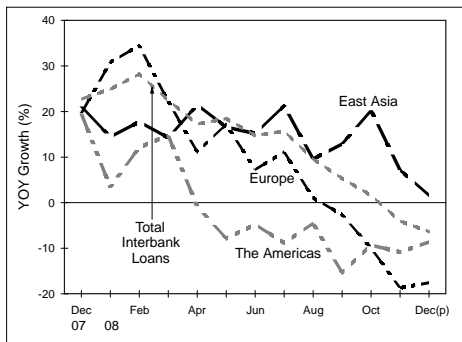
### Assets/Liabilities of ACUs



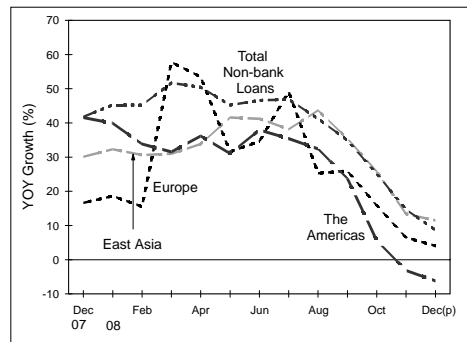
### ACUs' Interbank and Non-bank Customers Loans



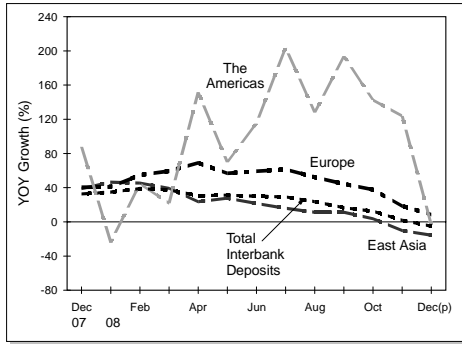
### ACUs' Interbank Loans by Regions



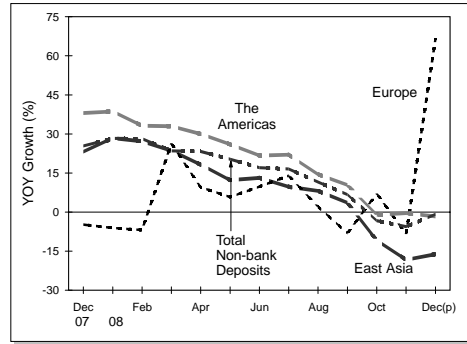
### ACUs' Non-bank Loans by Regions



### ACUs' Interbank Deposits by Regions

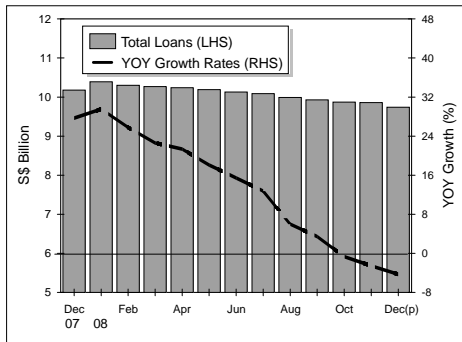


### ACUs' Non-bank Deposits by Regions

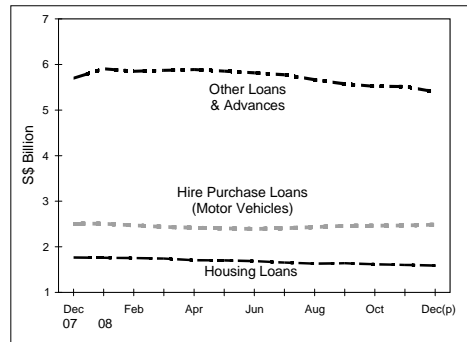


## FINANCE COMPANIES

### Finance Company Loans

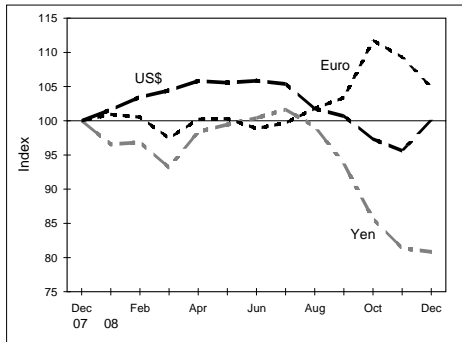


### Finance Company Loans by Sector

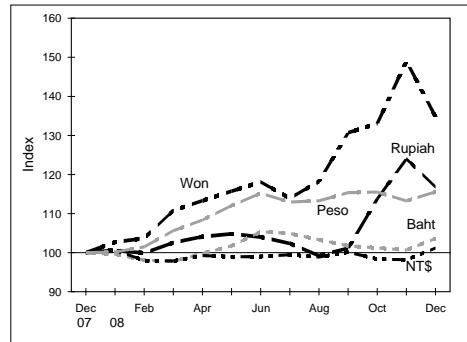


## MONEY MARKETS

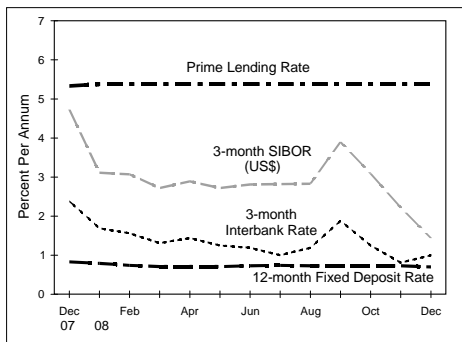
### Singapore Dollar Exchange Rates



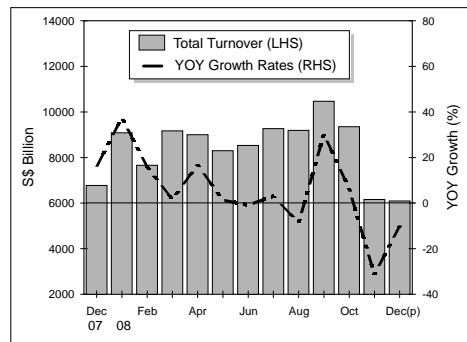
### Singapore Dollar Exchange Rates



### Interest Rates

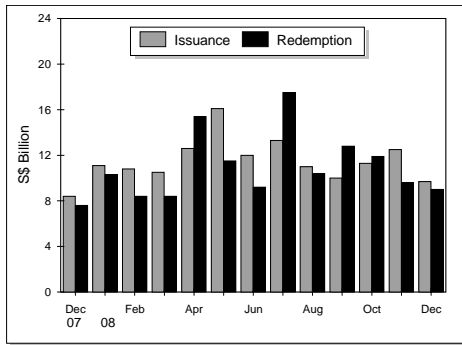


### Foreign Exchange Turnover

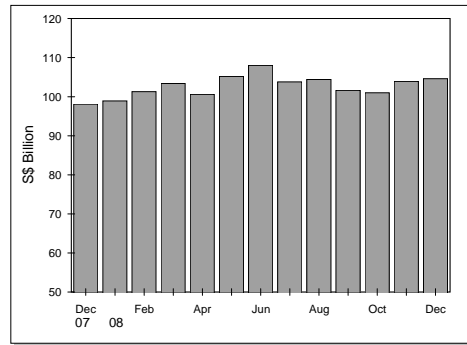


## CAPITAL MARKETS

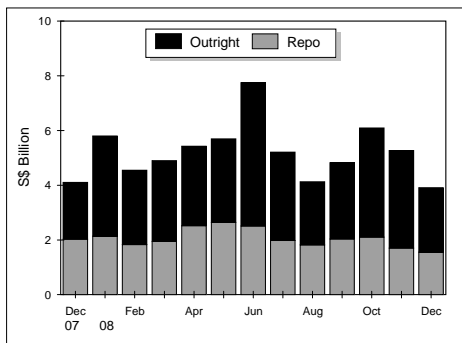
### SGS Issuance and Redemption



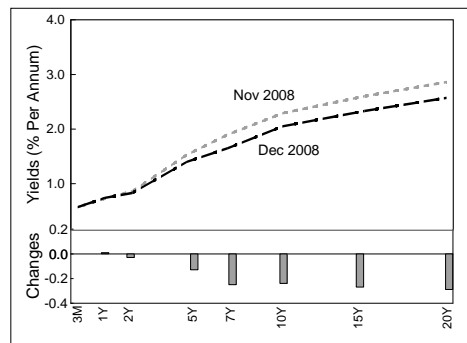
### Outstanding SGS



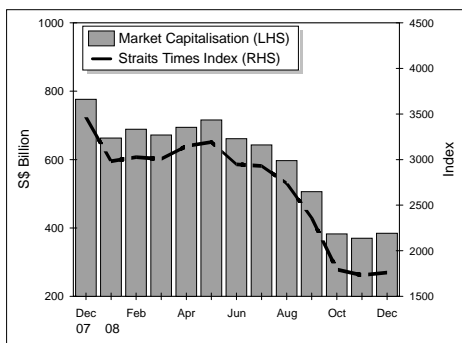
### SGS Average Daily Turnover



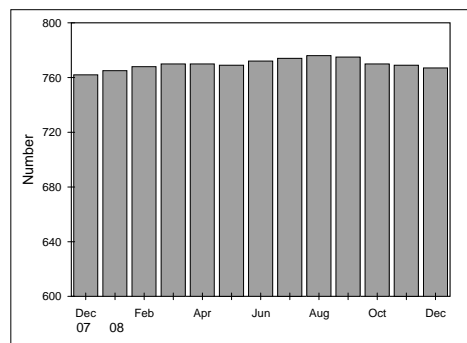
### SGS Yields



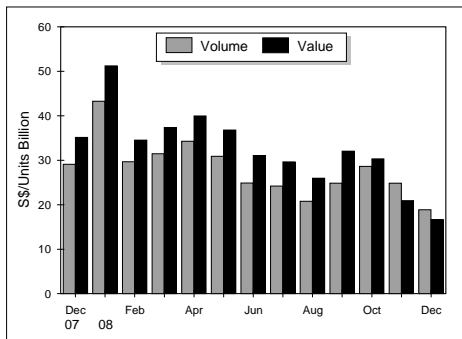
### Stock Market Capitalisation<sup>2</sup> and Straits Times Index



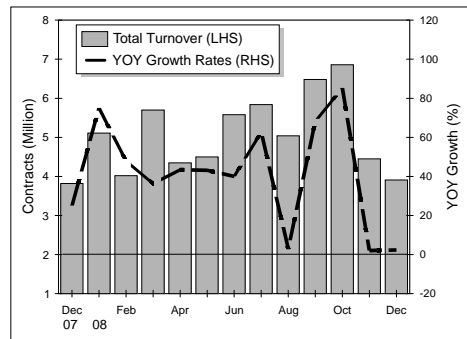
### Number of Listed Companies



### Stock Market Turnover



### Futures and Options Turnover



2 In May 2005, Singapore Exchange Securities Trading Limited (SGX-ST) changed its market capitalisation on computation methodology, which is stated below. For more information, please refer to SGX's website [www.sgx.com.sg](http://www.sgx.com.sg).

SGX-ST Market Capitalisation = Market Capitalisation of All Domestic Companies + Market Capitalisation of Primary-Listed Foreign Companies + Market Capitalisation of Secondary-Listed Foreign Companies which majority of trading activity takes place in SGX-ST.



Table I.1 Money Supply

S\$ MILLION

END OF PERIOD	QUASI-MONEY									NET DEPOSITS WITH FINANCE COMPANIES
	M3	M2	M1	CURRENCY IN ACTIVE CIRCULATION	DEMAND DEPOSITS	TOTAL	FIXED DEPOSITS	S\$ NCDS	SAVINGS & OTHER DEPOSITS	
	1=2+10	2=3+6	3=4+5	4*	5	6=7+8+9	7	8	9	
2004	212,182.7	206,977.9	44,162.3	13,694.0	30,468.3	162,815.6	93,360.2	515.0	68,940.4	5,204.8
2005	225,699.6	219,798.3	46,085.9	14,584.5	31,501.4	173,712.4	107,714.3	409.2	65,588.9	5,901.3
2006	268,749.1	262,369.8	52,242.6	15,284.7	36,957.9	210,127.2	141,619.4	220.8	68,287.0	6,379.3
2007	306,754.9	297,558.9	63,938.6	16,668.5	47,270.1	233,620.3	151,731.7	65.7	81,822.9	9,196.0
2008 P	342,387.5	333,411.1	75,703.8	18,997.4	56,706.4	257,707.3	155,121.9	18.0	102,567.4	8,976.4
2007 JAN	272,593.1	266,098.7	54,334.7	15,357.4	38,977.3	211,764.0	142,083.6	220.8	69,459.6	6,494.4
FEB	279,809.4	273,110.6	55,125.8	16,037.4	39,088.4	217,984.8	146,548.2	196.0	71,240.6	6,698.8
MAR	286,753.9	279,843.9	55,448.1	15,745.2	39,702.9	224,395.8	152,199.6	205.4	71,990.8	6,910.0
APR	291,541.0	284,475.2	55,488.0	15,803.1	39,684.9	228,987.2	154,412.8	205.6	74,368.8	7,065.8
MAY	296,953.8	289,477.5	58,313.9	15,909.0	42,404.9	231,163.6	153,465.7	432.6	77,265.3	7,476.3
JUN	301,275.4	293,612.5	59,761.1	16,077.9	43,683.2	233,851.4	153,768.0	430.8	79,652.6	7,662.9
JUL	300,570.2	292,327.5	60,075.4	16,041.5	44,033.9	232,252.1	151,461.7	282.3	80,508.1	8,242.7
AUG	300,642.0	292,325.4	61,169.8	16,041.1	45,128.7	231,155.6	151,277.3	304.2	79,574.1	8,316.6
SEP	302,682.3	294,139.2	60,941.0	16,193.7	44,747.3	233,198.2	152,841.2	309.8	80,047.2	8,543.1
OCT	304,600.2	295,743.2	63,206.1	16,159.0	47,047.1	232,537.1	152,592.1	310.4	79,634.6	8,857.0
NOV	305,781.9	296,734.3	62,724.4	16,223.3	46,501.1	234,009.9	155,056.5	65.6	78,887.8	9,047.6
DEC	306,754.9	297,558.9	63,938.6	16,668.5	47,270.1	233,620.3	151,731.7	65.7	81,822.9	9,196.0
2008 JAN	309,050.4	299,682.9	67,827.4	17,509.0	50,318.4	231,855.5	148,937.3	46.0	82,872.2	9,367.5
FEB	315,635.4	306,221.9	69,445.1	17,418.9	52,026.2	236,776.8	150,562.0	46.1	86,168.7	9,413.5
MAR	322,708.4	313,280.4	68,875.7	17,356.2	51,519.5	244,404.7	155,427.8	46.1	88,930.8	9,428.0
APR	327,653.4	318,322.5	71,576.6	17,335.6	54,241.0	246,745.9	154,718.8	35.9	91,991.2	9,330.9
MAY	323,808.2	314,463.8	71,909.3	17,521.4	54,387.9	242,554.5	149,367.8	27.9	93,158.8	9,344.4
JUN	325,082.4	315,700.0	73,016.5	17,562.4	55,454.1	242,683.5	149,119.6	27.9	93,536.0	9,382.4
JUL	329,677.4	320,481.3	73,080.0	17,649.5	55,430.5	247,401.3	152,112.0	48.0	95,241.3	9,196.1
AUG	326,918.9	317,784.9	73,527.8	17,976.1	55,551.7	244,257.1	148,905.9	47.9	95,303.3	9,134.0
SEP	334,096.5	324,975.9	75,924.5	18,196.4	57,728.1	249,051.4	152,202.6	28.0	96,820.8	9,120.6
OCT	340,621.7	331,584.3	75,250.7	18,596.5	56,654.2	256,333.6	159,614.7	3.0	96,715.9	9,037.4
NOV	340,899.2	331,841.7	74,390.7	18,763.0	55,627.7	257,451.0	158,945.8	3.0	98,502.2	9,057.5
DEC P	342,387.5	333,411.1	75,703.8	18,997.4	56,706.4	257,707.3	155,121.9	18.0	102,567.4	8,976.4

Note : Net deposits of finance companies excludes these institutions' deposits with banks.  
 Column 4 Figures exclude commemorative, numismatic and bullion coins issued by the Monetary Authority of Singapore and cash held by commercial banks and other financial institutions. The Board of Commissioners of Currency, Singapore merged with the Monetary Authority of Singapore in October 2002.

Table I.2A Monetary Survey

S\$ MILLION

END OF PERIOD	MONEY SUPPLY			DOMESTIC CREDIT			GOVERNMENT DEPOSITS	NET FOREIGN POSITION			OTHER ITEMS
	M1	QUASI-MONEY	M2	TOTAL	GOVERNMENT	PRIVATE SECTOR		TOTAL	MONETARY AUTHORITIES	BANKS	
	1	2	3=1+2	4=5+6	5	6		7	8=9+10	9	
2004	44,162.3	162,815.6	206,977.9	238,224.8	52,096.0	186,128.8	100,343.8	172,791.9	182,346.1	-9,554.2	-103,695.0
2005	46,085.9	173,712.4	219,798.3	240,558.3	50,760.0	189,798.3	110,851.2	193,710.2	191,790.1	1,920.1	-103,619.0
2006	52,242.6	210,127.2	262,369.8	256,397.6	57,346.6	199,051.0	111,834.0	224,787.3	207,909.4	16,877.9	-106,981.1
2007	63,938.6	233,620.3	297,558.9	299,187.5	66,435.8	232,751.7	113,112.1	239,378.1	233,826.6	5,551.5	-127,894.6
2008 P	75,703.8	257,707.3	333,411.1	341,650.3	73,555.8	268,094.5	134,810.0	263,940.0	249,585.9	14,354.1	-137,369.2
2007 JAN	54,334.7	211,764.0	266,098.7	259,844.0	59,433.3	200,410.7	115,565.3	233,206.0	205,699.8	27,506.2	-111,386.0
FEB	55,125.8	217,984.8	273,110.6	263,093.0	60,853.6	202,239.4	111,608.4	236,042.9	208,326.9	27,716.0	-114,416.9
MAR	55,448.1	224,395.8	279,843.9	266,492.8	61,461.4	205,031.4	111,116.1	240,337.3	207,977.4	32,359.9	-115,870.1
APR	55,488.0	228,987.2	284,475.2	270,131.3	64,578.2	205,553.1	103,777.8	237,145.7	211,904.8	25,240.9	-119,024.0
MAY	58,313.9	231,163.6	289,477.5	271,978.3	64,689.3	207,289.0	104,954.2	239,814.8	214,899.3	24,915.5	-117,361.4
JUN	59,761.1	233,851.4	293,612.5	276,465.4	64,196.1	212,269.3	105,273.9	240,356.9	219,583.2	20,773.7	-117,935.9
JUL	60,075.4	232,252.1	292,327.5	279,078.9	65,522.5	213,556.4	105,550.0	241,485.8	221,905.8	19,580.0	-122,687.2
AUG	61,169.8	231,155.6	292,325.4	282,115.8	66,380.7	215,735.1	104,951.7	240,797.7	224,415.4	16,382.3	-125,636.4
SEP	60,941.0	233,198.2	294,139.2	290,587.9	70,494.4	220,093.5	107,742.8	239,396.2	225,540.9	13,855.3	-128,102.1
OCT	63,206.1	232,537.1	295,743.2	291,998.8	66,833.5	225,165.3	106,339.9	237,619.1	228,368.6	9,250.5	-127,534.8
NOV	62,724.4	234,009.9	296,734.3	293,423.4	66,608.1	226,815.3	102,070.7	239,039.9	231,636.6	7,403.3	-133,658.3
DEC	63,938.6	233,620.3	297,558.9	299,187.5	66,435.8	232,751.7	113,112.1	239,378.1	233,826.6	5,551.5	-127,894.6
2008 JAN	67,827.4	231,855.5	299,682.9	302,964.2	67,467.4	235,496.8	110,856.0	240,945.7	236,730.2	4,215.5	-133,371.0
FEB	69,445.1	236,776.8	306,221.9	308,749.0	69,402.1	239,346.9	114,951.5	244,480.9	238,640.2	5,840.7	-132,056.5
MAR	68,875.7	244,404.7	313,280.4	316,047.0	70,904.3	245,142.7	116,503.2	253,609.5 r	244,178.9	9,430.6 r	-139,872.9 r
APR	71,576.6	246,745.9	318,322.5	315,818.1	68,492.5	247,325.6	113,344.7	248,909.6	238,023.7	10,885.9	-133,060.5
MAY	71,909.3	242,554.5	314,463.8	322,096.7	70,471.7	251,625.0	121,813.5	246,642.1	238,915.4	7,726.7	-132,461.5
JUN	73,016.5	242,683.5	315,700.0	326,529.3	72,140.8	254,388.5	126,042.4	255,469.5	239,655.0	15,814.5	-140,256.4
JUL	73,080.0	247,401.3	320,481.3	327,392.9	68,972.5	258,420.4	123,955.3	257,294.0	238,512.4	18,781.6	-140,250.3
AUG	73,527.8	244,257.1	317,784.9	331,493.2	70,891.6	260,601.6	127,479.9	252,935.3	240,516.8	12,418.5	-139,163.7
SEP	75,924.5	249,051.4	324,975.9	332,192.0	67,559.4	264,632.6	125,461.9	257,974.7	241,482.9	16,491.8	-139,728.9
OCT	75,250.7	256,333.6	331,584.3	336,037.5	67,367.0	268,670.5	124,908.7	253,719.0	239,853.8	13,865.2	-133,263.5
NOV	74,390.7	257,451.0	331,841.7	338,381.3	71,020.8	267,360.5	129,496.8	259,986.5	249,898.0	10,088.5	-137,029.3
DEC P	75,703.8	257,707.3	333,411.1	341,650.3	73,555.8	268,094.5	134,810.0	263,940.0	249,585.9	14,354.1	-137,369.2

Table I.2B Monetary Authorities: Assets and Liabilities

S\$ MILLION

END OF PERIOD	ASSETS				LIABILITIES			OTHER ITEMS (NET)
	FOREIGN ASSETS	TOTAL	DOMESTIC CREDIT		RESERVE MONEY	FOREIGN LIABILITIES	GOVERNMENT DEPOSITS	
			GOVERNMENT	PRIVATE SECTOR				
1	2=3+4	3	4	5	6	7	8	
2004	183,844.0	7,039.2	7,038.5	0.7	21,834.6	1,497.9	98,496.9	69,053.8
2005	193,601.2	7,010.2	7,009.6	0.6	23,395.8	1,811.1	107,771.5	67,633.0
2006	209,746.8	6,608.5	6,608.2	0.3	25,756.5	1,837.4	108,711.5	80,049.9
2007	235,691.6	6,501.9	6,501.7	0.2	28,061.0	1,865.0	108,948.1	103,319.4
2008 P	251,318.2	6,859.9	6,859.7	0.2	34,122.6	1,732.3	132,711.3	89,611.9
2007 JAN	207,543.6	6,609.1	6,608.8	0.3	25,063.0	1,843.8	112,859.1	74,386.8
FEB	210,170.6	6,309.7	6,309.4	0.3	26,474.7	1,843.7	108,604.3	79,557.6
MAR	209,813.1	6,409.7	6,409.4	0.3	25,526.8	1,835.7	107,749.1	81,111.2
APR	213,783.7	6,605.3	6,605.0	0.3	26,336.0	1,878.9	100,348.1	91,826.0
MAY	216,782.1	6,405.8	6,405.5	0.3	26,239.0	1,882.8	102,059.7	93,006.4
JUN	221,484.1	6,406.3	6,406.0	0.3	26,592.3	1,900.9	102,212.6	97,184.6
JUL	223,805.7	6,406.7	6,406.4	0.3	26,483.2	1,899.9	102,528.4	99,300.9
AUG	226,324.9	6,605.5	6,605.2	0.3	26,871.7	1,909.5	101,960.7	102,188.5
SEP	227,445.5	7,000.8	7,000.5	0.3	26,935.4	1,904.6	104,566.4	101,039.9
OCT	230,277.0	6,501.1	6,500.9	0.2	26,496.3	1,908.4	103,453.2	104,920.2
NOV	233,506.0	6,501.4	6,501.2	0.2	27,096.9	1,869.4	98,710.3	112,330.8
DEC	235,691.6	6,501.9	6,501.7	0.2	28,061.0	1,865.0	108,948.1	103,319.4
2008 JAN	238,590.2	6,502.2	6,502.0	0.2	29,109.2	1,860.0	108,399.1	105,724.1
FEB	240,504.5	6,502.5	6,502.3	0.2	28,446.3	1,864.3	111,926.7	104,769.7
MAR	246,045.3	6,702.6	6,702.4	0.2	28,732.9	1,866.4	112,997.1	109,151.5
APR	239,826.9	6,499.7	6,499.5	0.2	29,485.0	1,803.2	110,542.0	104,496.4
MAY	240,708.0	6,499.4	6,499.2	0.2	28,865.0	1,792.6	119,211.0	97,338.8
JUN	241,455.0	6,985.9	6,985.7	0.2	29,326.9	1,800.0	122,778.2	94,535.8
JUL	240,313.7	6,766.0	6,765.8	0.2	29,584.4	1,801.3	120,981.5	94,712.5
AUG	242,326.4	6,862.5	6,862.3	0.2	31,132.4	1,809.6	124,946.8	91,300.1
SEP	243,287.8	6,662.5	6,662.3	0.2	32,535.1	1,804.9	122,925.7	92,684.6
OCT	241,662.1	6,859.9	6,859.7	0.2	33,186.4	1,808.3	122,303.3	91,224.0
NOV	251,633.5	6,859.8	6,859.6	0.2	32,348.7	1,735.5	127,355.0	97,054.1
DEC P	251,318.2	6,859.9	6,859.7	0.2	34,122.6	1,732.3	132,711.3	89,611.9

Table I.3A Banks: Assets and Liabilities of Domestic Banking Units

S\$ MILLION

END OF PERIOD	ASSETS							LIABILITIES		
	TOTAL ASSETS / LIABILITIES	CASH	AMOUNTS DUE FROM BANKS	BALANCES WITH MAS	SECURITIES AND EQUITIES	LOANS AND ADVANCES INCLUDING BILLS FINANCING	OTHER ASSETS	DEPOSITS OF NON-BANK CUSTOMERS	AMOUNTS DUE TO BANKS	OTHER LIABILITIES
	1	2	3	4	5	6	7*	8*	9	10*
2004	398,236.7	1,400.7	113,856.1	6,775.0	68,217.7	179,088.6	28,898.6	206,176.3	114,953.7	77,106.7
2005	425,222.5	1,349.4	133,505.2	7,466.1	70,228.9	183,109.4	29,563.6	223,718.0	120,849.1	80,655.4
2006	508,449.9	1,665.4	183,989.2	8,802.0	80,627.0	194,597.6	38,768.7	272,462.6	146,468.4	89,519.0
2007	582,859.0	1,772.9	194,828.8	9,530.4	91,943.8	233,393.9	51,389.2	314,985.8	165,520.8	102,352.4
2008 P	668,478.2	1,739.8	217,301.1	13,466.0	98,734.5	272,175.4	65,061.5	347,507.4	184,401.8	136,568.9
2007 JAN	508,476.9	1,605.2	182,106.0	8,147.6	82,893.2	196,448.0	37,276.9	276,181.6	137,248.4	95,047.0
FEB	525,132.2	1,826.6	190,318.1	8,546.0	85,804.0	198,420.3	40,217.2	283,862.4	143,118.1	98,151.7
MAR	531,263.2	1,357.0	193,392.3	8,380.6	85,917.8	201,424.8	40,790.7	290,925.0	141,535.4	98,802.7
APR	549,729.4	1,465.5	205,350.7	8,953.5	89,480.5	201,795.2	42,684.0	297,387.9	150,925.8	101,415.8
MAY	557,842.9	1,450.4	211,410.7	8,957.7	90,539.0	203,802.3	41,682.8	303,541.6	155,436.7	98,864.6
JUN	551,342.8	1,485.4	199,815.9	9,082.9	90,575.9	209,074.3	41,308.5	306,135.8	150,072.7	95,134.3
JUL	552,644.5	1,347.3	198,168.1	9,005.9	90,304.9	211,106.8	42,711.5	305,166.6	148,816.6	98,661.3
AUG	558,792.6	1,488.0	201,887.6	9,343.9	91,073.9	213,764.4	41,234.8	306,828.8	154,589.7	97,374.1
SEP	563,819.9	1,365.0	193,335.4	9,432.1	94,306.9	218,700.5	46,680.0	308,741.5	152,785.0	102,293.4
OCT	577,839.6	1,365.1	202,149.4	8,913.5	92,233.1	224,058.4	49,120.1	311,910.6	161,571.7	104,357.3
NOV	579,910.0	1,629.5	200,842.7	9,231.9	91,775.2	226,391.3	50,039.5	314,674.4	161,634.3	103,601.2
DEC	582,859.0	1,772.9	194,828.8	9,530.4	91,943.8	233,393.9	51,389.2	314,985.8	165,520.8	102,352.4
2008 JAN	606,447.4	1,735.6	201,937.4	9,954.5	93,986.9	236,771.2	62,061.8	315,433.7	170,905.2	120,108.5
FEB	618,031.9	1,690.4	206,300.6	9,332.7	95,693.3	241,800.3	63,214.6	323,723.3	176,622.3	117,686.3
MAR	637,259.2 r	1,582.5	216,341.6	9,782.8	96,856.6	249,326.5	63,369.3 r	330,849.0	184,235.2	122,175.1 r
APR	642,122.5	1,785.5	219,601.0	10,355.0	94,158.7	250,937.5	65,284.9	336,161.3	184,478.9	121,482.3
MAY	645,347.9	1,586.3	217,154.9	9,619.3	96,037.0	256,767.7	64,182.6	334,251.6	190,793.1	120,303.2
JUN	649,525.1	1,768.1	214,557.5	9,967.9	97,214.7	261,142.6	64,874.3	333,260.1	188,483.7	127,781.4
JUL	653,549.0	1,426.4	221,930.2	10,563.2	94,646.6	265,708.3	59,274.3	337,695.1	190,521.8	125,332.1
AUG	658,775.1	1,573.4	224,442.0	11,515.3	96,952.3	267,837.9	56,454.1	335,084.8	198,996.7	124,693.5
SEP	657,896.4	1,798.1	222,879.1	11,117.6	93,491.2	272,931.3	55,679.1	341,702.3	192,638.4	123,555.7
OCT	654,296.0 r	1,902.2	215,684.8	12,134.7	92,871.2	275,938.6	55,764.6 r	346,353.7	181,811.7	126,130.6 r
NOV	657,208.6	1,605.9	217,453.0	11,749.8	96,409.3	273,193.9	56,796.8	345,892.9	185,502.3	125,813.4
DEC P	668,478.2	1,739.8	217,301.1	13,466.0	98,734.5	272,175.4	65,061.5	347,507.4	184,401.8	136,568.9

Column 7 The value of fixed assets is reported before depreciation.

Column 8 Excludes non-bank customers' holdings of S\$NCDs.

Column 10 Include accumulated depreciation for fixed assets.

Table I.3B Banks: Assets of Domestic Banking Units

S\$ MILLION

END OF PERIOD	TOTAL ASSETS	CASH	BALANCES WITH MAS	LOANS AND ADVANCES INCLUDING BILLS FINANCING				
				TOTAL	LOANS AND ADVANCES		BILLS DISCOUNTED OR PURCHASED	
					RESIDENT	NON-RESIDENT	PAYABLE IN SINGAPORE	PAYABLE OUTSIDE SINGAPORE
1=2+3+4+9+14+18+21	2	3	4=5+6+7+8	5	6	7*	8*	
2004	398,236.7	1,400.7	6,775.0	179,088.6	168,602.9	4,940.9	2,405.8	3,139.0
2005	425,222.5	1,349.4	7,466.1	183,109.4	170,846.7	6,954.6	2,074.8	3,233.3
2006	508,449.9	1,665.4	8,802.0	194,597.6	179,428.2	9,009.2	2,653.3	3,506.9
2007	582,859.0	1,772.9	9,530.4	233,393.9	210,411.1	13,947.7	3,925.1	5,110.1
2008 P	668,478.2	1,739.8	13,466.0	272,175.4	246,053.8	16,631.9	3,907.2	5,582.5
2007 JAN	508,476.9	1,605.2	8,147.6	196,448.0	180,830.5	9,434.6	2,570.9	3,612.1
FEB	525,132.2	1,826.6	8,546.0	198,420.3	181,871.3	9,950.6	2,765.3	3,833.1
MAR	531,263.2	1,357.0	8,380.6	201,424.8	184,504.4	10,084.8	2,993.9	3,841.7
APR	549,729.4	1,465.5	8,953.5	201,795.2	184,669.2	10,308.4	2,918.2	3,899.3
MAY	557,842.9	1,450.4	8,957.7	203,802.3	186,270.2	10,486.8	3,087.4	3,958.0
JUN	551,342.8	1,485.4	9,082.9	209,074.3	190,680.2	11,174.5	3,185.4	4,034.2
JUL	552,644.5	1,347.3	9,005.9	211,106.8	192,349.2	11,626.3	3,240.6	3,890.7
AUG	558,792.6	1,488.0	9,343.9	213,764.4	193,490.7	12,449.4	3,638.4	4,185.9
SEP	563,819.9	1,365.0	9,432.1	218,700.5	198,124.6	12,686.5	3,757.8	4,131.6
OCT	577,839.6	1,365.1	8,913.5	224,058.4	202,560.2	13,525.8	3,654.0	4,318.3
NOV	579,910.0	1,629.5	9,231.9	226,391.3	204,228.1	13,603.4	3,885.3	4,674.6
DEC	582,859.0	1,772.9	9,530.4	233,393.9	210,411.1	13,947.7	3,925.1	5,110.1
2008 JAN	606,447.4	1,735.6	9,954.5	236,771.2	213,329.0	14,068.6	3,788.1	5,585.4
FEB	618,031.9	1,690.4	9,332.7	241,800.3	217,043.5	14,599.9	3,894.1	6,262.8
MAR	637,259.2 r	1,582.5	9,782.8	249,326.5	222,749.7	15,189.1	4,304.7	7,083.1
APR	642,122.5	1,785.5	10,355.0	250,937.5	224,890.2	14,568.5	4,315.3	7,163.5
MAY	645,347.9	1,586.3	9,619.3	256,767.7	229,511.6	14,731.1	4,401.3	8,123.8
JUN	649,525.1	1,768.1	9,967.9	261,142.6	231,839.0	15,505.1	4,871.4	8,927.1
JUL	653,549.0	1,426.4	10,563.2	265,708.3	235,978.2	15,784.7	4,520.4	9,425.0
AUG	658,775.1	1,573.4	11,515.3	267,837.9	237,532.1	15,795.7	4,821.2	9,688.9
SEP	657,896.4	1,798.1	11,117.6	272,931.3	241,508.0	17,133.3	4,859.6	9,430.4
OCT	654,296.0 r	1,902.2	12,134.7	275,938.6	245,934.6	17,104.8	4,472.4	8,426.8
NOV	657,208.6	1,605.9	11,749.8	273,193.9	244,909.6	16,794.8	4,231.1	7,258.3
DEC P	668,478.2	1,739.8	13,466.0	272,175.4	246,053.8	16,631.9	3,907.2	5,582.5

Columns 7 & 8 Excludes bills rediscounted between banks.

Table I.3B Banks: Assets of Domestic Banking Units (continued)

S\$ MILLION

END OF PERIOD	TOTAL ASSETS								
	SECURITIES AND EQUITIES ISSUED BY PRIVATE ENTITIES					DEBT SECURITIES BY GOVERNMENT RELATED ENTITIES			
	TOTAL	DEBT SECURITIES		EQUITY INVESTMENTS		TOTAL	GOVERNMENT OF SINGAPORE	STATUTORY AUTHORITIES	OTHER GOVERNMENTS
		IN SINGAPORE	OUTSIDE SINGAPORE	IN SINGAPORE	OUTSIDE SINGAPORE				
	9=10+11+12+13	10	11	12	13	14=15+16+17	15	16	17
2004	21,211.6	6,965.2	4,162.8	7,058.4	3,025.1	47,006.1	45,057.5	1,095.7	852.9
2005	24,057.2	7,084.2	5,370.7	8,324.0	3,278.3	46,171.7	43,750.4	1,468.1	953.3
2006	26,735.8	6,842.8	8,320.6	8,077.7	3,494.7	53,891.2	50,738.3	2,048.8	1,104.1
2007	28,548.7	7,336.5	9,256.5	8,417.9	3,537.7	63,395.1	59,934.1	2,660.9	800.1
2008 P	29,000.0	8,000.9	8,710.0	7,752.6	4,536.6	69,734.5	66,696.1	2,379.9	658.5
2007 JAN	26,969.8	6,776.8	8,465.8	8,228.0	3,499.3	55,923.4	52,824.4	2,004.4	1,094.6
FEB	28,245.3	7,381.8	9,054.8	8,294.3	3,514.3	57,558.8	54,544.2	1,926.3	1,088.3
MAR	28,018.1	7,234.6	8,879.0	8,408.5	3,496.0	57,899.7	55,052.0	1,889.7	958.0
APR	28,856.8	7,360.5	9,199.2	8,794.7	3,502.4	60,623.7	57,973.2	1,810.2	840.3
MAY	29,565.3	7,605.3	9,968.4	8,472.7	3,518.9	60,973.7	58,283.8	1,853.1	836.8
JUN	29,674.6	7,661.5	9,790.2	8,716.1	3,506.7	60,901.4	57,790.1	2,025.9	1,085.4
JUL	28,431.6	7,346.0	8,946.2	8,657.6	3,481.9	61,873.3	59,116.1	1,962.8	794.4
AUG	27,996.8	7,051.2	8,420.2	9,056.6	3,468.9	63,077.1	59,775.5	2,498.0	803.6
SEP	27,498.0	6,987.9	8,344.8	8,711.5	3,453.8	66,808.9	63,493.9	2,511.5	803.6
OCT	28,283.4	7,362.7	8,692.4	8,765.1	3,463.2	63,949.8	60,332.6	2,823.1	794.1
NOV	28,059.6	7,399.2	8,700.5	8,503.2	3,456.7	63,715.6	60,106.9	2,799.3	809.4
DEC	28,548.7	7,336.5	9,256.5	8,417.9	3,537.7	63,395.1	59,934.1	2,660.9	800.1
2008 JAN	29,694.9	7,365.5	9,931.3	8,223.5	4,174.7	64,292.0	60,965.4	2,790.5	536.1
FEB	29,722.5	7,643.1	9,580.2	8,230.4	4,268.9	65,970.8	62,899.8	2,535.7	535.3
MAR	29,854.2	7,675.4	9,835.4	8,088.1	4,255.3	67,002.4	64,201.9	2,324.7	475.8
APR	29,396.0	7,688.6	9,267.2	8,125.5	4,314.7	64,762.7	61,993.0	2,305.7	464.0
MAY	29,160.8	7,346.9	9,304.9	8,184.0	4,325.1	66,876.2	63,972.5	2,181.0	722.6
JUN	29,217.7	7,512.3	9,171.7	8,175.5	4,358.2	67,997.0	65,155.2	1,990.1	851.8
JUL	29,674.1	7,917.6	9,332.5	8,019.5	4,404.5	64,972.5	62,206.7	1,984.5	781.2
AUG	30,324.5	8,332.4	9,558.4	7,838.7	4,595.0	66,627.8	64,029.4	2,077.1	521.4
SEP	29,782.1	8,428.4	9,354.2	7,471.7	4,527.8	63,709.1	60,897.1	2,364.7	447.2
OCT	29,559.7	8,129.9	9,131.9	7,751.7	4,546.1	63,311.6	60,507.4	2,381.6	422.5
NOV	29,284.2	8,063.9	8,947.5	7,711.9	4,560.8	67,125.1	64,161.2	2,443.7	520.2
DEC P	29,000.0	8,000.9	8,710.0	7,752.6	4,536.6	69,734.5	66,696.1	2,379.9	658.5

**Table I.3B Banks: Assets of Domestic Banking Units (continued)**

S\$ MILLION

END OF PERIOD	TOTAL ASSETS			
	AMOUNTS DUE FROM BANKS			OTHER ASSETS
	TOTAL	IN SINGAPORE	OUTSIDE SINGAPORE	
	18=19+20	19	20*	21*
2004	113,856.1	32,615.8	81,240.3	28,898.6
2005	133,505.2	39,004.2	94,501.0	29,563.6
2006	183,989.2	51,554.4	132,434.8	38,768.7
2007	194,828.8	59,924.1	134,904.7	51,389.2
2008 P	217,301.1	52,572.1	164,728.9	65,061.5
2007 JAN	182,106.0	46,734.4	135,371.6	37,276.9
FEB	190,318.1	52,998.6	137,319.4	40,217.2
MAR	193,392.3	48,992.6	144,399.7	40,790.7
APR	205,350.7	62,829.8	142,521.0	42,684.0
MAY	211,410.7	60,619.3	150,791.4	41,682.8
JUN	199,815.9	59,541.7	140,274.3	41,308.5
JUL	198,168.1	59,891.0	138,277.1	42,711.5
AUG	201,887.6	60,248.9	141,638.7	41,234.8
SEP	193,335.4	55,834.2	137,501.2	46,680.0
OCT	202,149.4	62,084.3	140,065.2	49,120.1
NOV	200,842.7	64,391.8	136,450.9	50,039.5
DEC	194,828.8	59,924.1	134,904.7	51,389.2
2008 JAN	201,937.4	65,908.6	136,028.9	62,061.8
FEB	206,300.6	66,757.7	139,542.9	63,214.6
MAR	216,341.6	65,608.2	150,733.4	63,369.3
APR	219,601.0	72,301.9	147,299.0	65,284.9
MAY	217,154.9	66,587.1	150,567.8	64,182.6
JUN	214,557.5	59,651.5	154,905.9	64,874.3
JUL	221,930.2	64,208.3	157,722.0	59,274.3
AUG	224,442.0	60,953.8	163,488.2	56,454.1
SEP	222,879.1	62,314.6	160,564.6	55,679.1
OCT	215,684.8	58,561.2	157,123.5	55,764.6
NOV	217,453.0	56,762.8	160,690.1	56,796.8
DEC P	217,301.1	52,572.1	164,728.9	65,061.5

Column 20 Includes Asian Currency Units.

Column 21 The value of fixed assets is reported before depreciation.

Table I.3C Banks: Liabilities of Domestic Banking Units

S\$ MILLION

END OF PERIOD	TOTAL LIABILITIES	CAPITAL AND RESERVES	DEPOSITS OF NON-BANK CUSTOMERS					AMOUNTS DUE TO BANKS			OTHER LIABILITIES
			TOTAL	DEMAND DEPOSITS	FIXED DEPOSITS	SAVINGS DEPOSITS	OTHER DEPOSITS	TOTAL	IN SINGAPORE	OUTSIDE SINGAPORE	
			1=2+3+8+ 11	2	3*=4 TO 7	4	5	6	7	8=9+ 10	
2004	398,236.7	35,933.0	206,176.3	32,775.4	99,829.5	72,938.3	633.0	114,953.7	18,815.1	96,138.6	41,173.8
2005	425,222.5	38,161.7	223,718.0	35,140.1	118,496.4	69,306.2	775.4	120,849.1	23,010.9	97,838.3	42,493.7
2006	508,449.9	39,017.4	272,462.6	41,473.1	158,168.3	71,760.9	1,060.3	146,468.4	19,879.9	126,588.5	50,501.6
2007	582,859.0	41,436.9	314,985.8	52,080.2	175,421.2	86,496.0	988.5	165,520.8	17,225.7	148,295.1	60,915.5
2008 P	668,478.2	51,370.0	347,507.4	62,100.4	175,646.9	109,033.5	726.6	184,401.8	18,283.9	166,117.9	85,198.9
2007 JAN	508,476.9	43,515.5	276,181.6	42,738.9	159,355.9	72,947.9	1,138.9	137,248.4	18,736.4	118,511.9	51,531.5
FEB	525,132.2	43,817.1	283,862.4	43,082.3	164,867.0	74,674.5	1,238.5	143,118.1	21,273.2	121,844.8	54,334.6
MAR	531,263.2	44,440.1	290,925.0	43,149.0	171,064.0	75,463.7	1,248.4	141,535.4	17,684.2	123,851.3	54,362.6
APR	549,729.4	43,730.2	297,387.9	43,855.1	174,252.1	77,958.2	1,322.5	150,925.8	21,905.8	129,020.0	57,685.6
MAY	557,842.9	43,610.5	303,541.6	46,563.0	174,550.7	81,011.0	1,417.0	155,436.7	19,080.8	136,356.0	55,254.1
JUN	551,342.8	43,106.2	306,135.8	47,810.3	173,360.1	83,567.6	1,397.9	150,072.7	16,995.1	133,077.5	52,028.1
JUL	552,644.5	43,308.2	305,166.6	48,654.7	170,678.3	84,439.0	1,394.6	148,816.6	17,060.7	131,755.9	55,353.1
AUG	558,792.6	42,141.2	306,828.8	49,965.9	171,945.4	83,638.0	1,279.6	154,589.7	18,756.6	135,833.1	55,232.9
SEP	563,819.9	42,898.7	308,741.5	49,973.5	173,210.1	84,236.9	1,321.1	152,785.0	16,543.1	136,241.9	59,394.6
OCT	577,839.6	43,601.0	311,910.6	51,916.0	174,839.6	83,881.6	1,273.4	161,571.7	16,491.0	145,080.7	60,756.2
NOV	579,910.0	43,397.0	314,674.4	51,409.7	178,880.0	83,283.8	1,100.8	161,634.3	19,087.6	142,546.7	60,204.2
DEC	582,859.0	41,436.9	314,985.8	52,080.2	175,421.2	86,496.0	988.5	165,520.8	17,225.7	148,295.1	60,915.5
2008 JAN	606,447.4	45,556.5	315,433.7	55,444.0	171,431.0	87,656.6	902.1	170,905.2	20,392.7	150,512.5	74,552.0
FEB	618,031.9	46,878.9	323,723.3	57,229.1	174,394.7	91,239.5	860.1	176,622.3	21,684.8	154,937.5	70,807.4
MAR	637,259.2 r	47,895.7 r	330,849.0	57,972.3	177,955.1	94,154.8	766.8	184,235.2	20,440.8	163,794.3	74,279.4 r
APR	642,122.5	45,099.1	336,161.3	60,316.4	177,689.6	97,451.4	703.8	184,478.9	23,715.8	160,763.1	76,383.2
MAY	645,347.9	44,421.4	334,251.6	60,412.0	174,383.3	98,773.2	683.2	190,793.1	24,364.4	166,428.7	75,881.8
JUN	649,525.1	44,261.4	333,260.1	62,574.4	170,681.4	99,360.9	643.4	188,483.7	20,978.9	167,504.8	83,520.0
JUL	653,549.0	46,181.7	337,695.1	61,302.5	174,577.5	101,191.2	623.9	190,521.8	23,718.4	166,803.3	79,150.4
AUG	658,775.1	45,313.1	335,084.8	61,297.7	171,787.5	101,367.3	632.3	198,996.7	23,371.4	175,625.3	79,380.4
SEP	657,896.4	46,202.3	341,702.3	64,027.4	174,195.4	102,762.3	717.2	192,638.4	24,846.3	167,792.1	77,353.4
OCT	654,296.0 r	49,904.5	346,353.7	62,775.3	180,042.9	102,781.9	753.6	181,811.7	20,980.2	160,831.4	76,226.1 r
NOV	657,208.6	50,268.1	345,892.9	61,086.4	179,322.3	104,745.7	738.4	185,502.3	20,882.7	164,619.6	75,545.3
DEC P	668,478.2	51,370.0	347,507.4	62,100.4	175,646.9	109,033.5	726.6	184,401.8	18,283.9	166,117.9	85,198.9

Column 3 Excludes non-bank customers' holdings of S\$NCDs.

Column 10 Includes Asian Currency Units.

Column 11 Include accumulated depreciation for fixed assets.



Table 1.4 Banks: Deposits (excluding S\$NCDs) of Domestic Banking Units By Types of Non-Bank customers

S\$ MILLION

END OF PERIOD	TOTAL DEPOSITS										
	TOTAL	IN S\$	IN FOREIGN CURRENCIES	SINGAPORE GOVERNMENT & STATUTORY BOARDS			DEPOSITS OF NON-BANK FINANCIAL INSTITUTIONS				
				TOTAL	DEMAND DEPOSITS	FIXED DEPOSITS	SAVINGS & OTHER DEPOSITS	TOTAL	DEMAND DEPOSITS	FIXED DEPOSITS	SAVINGS & OTHER DEPOSITS
1=2+3	2	3	4=5+6+7	5	6	7	8=9+10+11	9	10	11	
2004	206,176.3	204,305.4	1,870.8	12,719.8	1,955.2	10,747.9	16.7	21,644.3	5,421.9	16,155.9	66.5
2005	223,718.0	221,715.8	2,002.2	14,580.8	3,807.6	10,671.8	101.4	17,753.2	4,745.9	12,964.5	42.8
2006	272,462.6	270,367.1	2,095.5	21,104.2	3,700.2	17,260.0	144.0	27,799.4	5,972.4	21,813.6	13.4
2007	314,985.8	311,621.6	3,364.3	19,099.2	2,368.9	16,592.5	137.8	29,593.8	8,315.8	21,262.1	15.8
2008 P	347,507.4	344,411.9	3,095.6	19,031.9	2,416.9	16,256.2	358.8	41,949.2	8,459.7	33,442.9	46.6
2007 JAN	276,181.6	274,111.6	2,070.0	19,115.9	2,802.4	16,171.0	142.5	29,255.5	7,657.6	21,582.9	15.0
FEB	283,862.4	281,417.7	2,444.7	20,001.7	2,996.6	16,893.3	111.7	30,080.9	7,362.9	22,687.7	30.3
MAR	290,925.0	288,284.8	2,640.3	20,980.1	2,479.5	18,378.3	122.4	32,294.0	7,802.1	24,479.3	12.6
APR	297,387.9	295,134.0	2,253.9	20,122.4	2,739.9	17,244.5	138.0	31,705.0	7,128.0	24,561.4	15.5
MAY	303,541.6	300,952.4	2,589.2	18,653.7	2,972.6	15,546.9	134.2	32,568.9	7,944.7	24,609.4	14.8
JUN	306,135.8	303,537.8	2,598.0	18,166.6	2,994.1	15,031.3	141.3	33,954.8	7,857.7	26,077.7	19.5
JUL	305,166.6	302,864.7	2,301.9	17,720.5	2,710.2	14,864.6	145.7	30,467.7	8,250.1	22,178.1	39.5
AUG	306,828.8	303,391.4	3,437.4	19,637.1	2,702.9	16,800.6	133.7	32,199.4	9,035.5	23,143.4	20.5
SEP	308,741.5	306,319.6	2,421.9	20,241.1	2,884.7	17,202.9	153.6	31,230.0	8,613.0	22,486.7	130.3
OCT	311,910.6	309,653.9	2,256.7	20,572.8	2,811.7	17,610.6	150.6	29,992.5	8,564.6	21,413.5	14.4
NOV	314,674.4	312,496.8	2,177.6	21,312.4	3,016.6	18,129.8	166.1	32,302.3	8,726.7	23,562.0	13.6
DEC	314,985.8	311,621.6	3,364.3	19,099.2	2,368.9	16,592.5	137.8	29,593.8	8,315.8	21,262.1	15.8
2008 JAN	315,433.7	313,058.3	2,375.3	16,285.8	3,248.8	12,917.4	119.6	30,221.5	8,676.0	21,521.0	24.5
FEB	323,723.3	321,148.8	2,574.6	16,531.3	2,369.2	14,033.0	129.0	31,115.5	10,102.1	20,992.7	20.7
MAR	330,849.0	328,140.8	2,708.1	16,512.2	3,329.2	13,031.2	151.8	36,212.3	8,771.0	27,412.6	28.7
APR	336,161.3	333,525.2	2,636.1	16,761.0	2,516.5	14,091.0	153.5	36,369.3	8,531.2	27,798.6	39.5
MAY	334,251.6	331,492.5	2,759.1	17,029.9	1,970.3	14,882.7	176.8	33,545.0	9,152.4	24,370.2	22.4
JUN	333,260.1	330,522.6	2,737.5	17,917.5	3,207.2	14,436.0	274.4	33,953.0	9,301.5	24,624.9	26.6
JUL	337,695.1	334,111.6	3,583.5	18,876.1	2,480.8	16,148.2	247.1	36,108.7	8,872.2	27,187.1	49.4
AUG	335,084.8	331,950.2	3,134.6	18,793.5	2,152.1	16,394.0	247.4	37,372.8	8,624.0	28,708.8	40.0
SEP	341,702.3	338,665.7	3,036.6	18,157.7	2,146.8	15,847.0	163.9	38,792.1	8,160.6	30,605.1	26.4
OCT	346,353.7	343,483.3	2,870.4	19,882.1	2,422.5	17,161.4	298.3	44,628.9	8,934.4	35,665.0	29.5
NOV	345,892.9	342,816.8	3,076.0	19,396.3	1,894.0	17,155.3	347.0	42,943.5	8,307.5	34,599.0	36.9
DEC P	347,507.4	344,411.9	3,095.6	19,031.9	2,416.9	16,256.2	358.8	41,949.2	8,459.7	33,442.9	46.6

Table I.4 Banks: Deposits (excluding S\$NCDs) of Domestic Banking Units by Types of Non-bank Customers (continued)

S\$ MILLION

END OF PERIOD	DEPOSITS OF OTHER RESIDENTS IN SINGAPORE				DEPOSITS OF RESIDENTS OUTSIDE SINGAPORE			
	TOTAL	DEMAND DEPOSITS	FIXED DEPOSITS	SAVINGS & OTHER DEPOSITS	TOTAL	DEMAND DEPOSITS	FIXED DEPOSITS	SAVINGS & OTHER DEPOSITS
	12=13+14+15	13	14	15	16=17+18+19	17	18	19
2004	160,251.7	23,835.5	67,545.3	68,870.9	11,560.5	1,562.8	5,380.5	4,617.2
2005	175,550.4	24,774.7	85,257.7	65,518.0	15,833.5	1,811.9	9,602.3	4,419.3
2006	201,083.3	28,954.9	103,888.3	68,240.1	22,475.7	2,845.7	15,206.4	4,423.6
2007	236,295.6	37,494.8	117,046.2	81,754.6	29,997.2	3,900.6	20,520.3	5,576.4
2008 P	255,513.4	46,519.6	106,768.8	102,225.0	31,013.0	4,704.2	19,178.9	7,129.8
2007 JAN	204,855.4	29,437.1	106,003.8	69,414.4	22,954.8	2,841.8	15,598.1	4,514.9
FEB	209,798.7	29,945.2	108,675.3	71,178.2	23,981.1	2,777.6	16,610.6	4,592.8
MAR	213,986.0	29,944.5	112,101.6	71,939.9	23,664.9	2,922.9	16,104.8	4,637.2
APR	220,068.7	30,982.1	114,776.6	74,310.1	25,491.8	3,005.1	17,669.6	4,817.0
MAY	224,807.7	32,210.5	115,384.9	77,212.3	27,511.2	3,435.1	19,009.4	5,066.7
JUN	228,043.7	33,697.1	114,758.1	79,588.6	25,970.7	3,261.4	17,493.0	5,216.2
JUL	230,837.1	34,010.1	116,412.2	80,414.8	26,141.3	3,684.2	17,223.4	5,233.7
AUG	227,134.7	34,477.3	113,149.9	79,507.5	27,857.7	3,750.3	18,851.5	5,255.9
SEP	229,341.0	34,512.6	114,955.4	79,872.9	27,929.4	3,963.2	18,565.1	5,401.2
OCT	231,595.2	36,575.4	115,449.9	79,569.9	29,750.1	3,964.4	20,365.5	5,420.2
NOV	230,191.1	36,114.6	115,253.8	78,822.7	30,868.6	3,551.8	21,934.4	5,382.4
DEC	236,295.6	37,494.8	117,046.2	81,754.6	29,997.2	3,900.6	20,520.3	5,576.4
2008 JAN	238,077.5	39,357.4	115,923.3	82,796.8	30,848.9	4,161.8	21,069.3	5,617.8
FEB	244,134.9	40,418.6	117,628.3	86,088.1	31,941.7	4,339.2	21,740.7	5,861.8
MAR	246,659.6	41,261.9	116,579.3	88,818.5	31,464.8	4,610.1	20,932.0	5,922.7
APR	250,623.5	44,255.6	114,494.4	91,873.5	32,407.5	5,013.1	21,305.6	6,088.7
MAY	248,942.2	43,965.8	111,941.0	93,035.4	34,734.6	5,323.5	23,189.3	6,221.8
JUN	249,503.4	44,626.3	111,569.9	93,307.2	31,886.1	5,439.4	20,050.6	6,396.1
JUL	250,772.8	45,236.2	110,515.3	95,021.3	31,937.5	4,713.3	20,726.8	6,497.3
AUG	246,127.8	45,604.6	105,442.2	95,081.1	32,790.7	4,917.1	21,242.5	6,631.2
SEP	252,337.9	48,285.3	107,348.8	96,703.8	32,414.6	5,434.6	20,394.5	6,585.4
OCT	251,079.2	46,298.2	108,321.1	96,459.9	30,763.5	5,120.1	18,895.4	6,748.0
NOV	252,877.7	46,086.1	108,602.1	98,189.6	30,675.4	4,798.9	18,965.9	6,910.7
DEC P	255,513.4	46,519.6	106,768.8	102,225.0	31,013.0	4,704.2	19,178.9	7,129.8

**Table I.5A Banks: Loans and Advances of Domestic Banking Units to Non-bank Customers by Industrial Classification**

\$\$ MILLION

END OF PERIOD	LOANS AND ADVANCES INCLUDING BILLS FINANCING											
	LOANS TO BUSINESSES										PROFESSIONAL AND PRIVATE INDIVIDUALS	
	TOTAL	TOTAL	AGRICULTURE, MINING AND QUARRYING	MANUFACTURING	BUILDING AND CONSTRUCTION	GENERAL COMMERCE	TRANSPORT, STORAGE AND COMMUNICATION	BUSINESS SERVICES	FINANCIAL INSTITUTIONS	BUSINESS PURPOSES		OTHERS
	1=2+12	2=3 TO 11	3	4	5*	6	7	8	9	10		11
2004	179,088.6	89,908.3	212.5	9,796.9	23,548.8	18,893.8	3,956.8	3,001.8	22,136.9	2,278.7	6,082.1	
2005	183,109.4	91,250.4	293.0	10,108.0	23,031.1	19,885.2	4,327.0	2,455.3	21,993.1	2,577.7	6,580.0	
2006	194,597.6	101,155.2	325.9	10,863.2	26,345.5	20,059.0	6,297.1	3,408.4	23,805.6	2,221.0	7,829.5	
2007	233,393.9	127,774.1	232.1	10,220.3	37,508.9	22,271.9	9,129.8	4,564.2	31,360.4	2,590.0	9,896.5	
2008 P	272,175.4	157,811.4	283.2	11,743.4	49,994.4	24,863.7	9,211.7	5,631.1	33,506.1	3,090.3	19,487.5	
2007 JAN	196,448.0	102,557.1	419.3	10,560.8	26,972.7	19,943.0	6,350.1	3,437.0	24,640.6	2,243.2	7,990.4	
FEB	198,420.3	104,284.9	405.3	10,742.0	27,593.8	19,823.9	6,788.6	3,534.7	24,942.6	2,231.0	8,223.0	
MAR	201,424.8	106,878.4	365.5	10,540.2	28,172.7	20,010.8	6,932.9	3,268.2	26,727.4	2,227.0	8,633.7	
APR	201,795.2	106,558.8	389.1	10,353.2	29,278.8	19,747.5	6,928.0	3,429.4	25,833.6	2,198.6	8,400.6	
MAY	203,802.3	107,981.7	285.1	10,760.4	30,032.0	19,962.5	7,278.6	3,441.9	25,569.8	2,209.9	8,441.5	
JUN	209,074.3	112,116.2	183.8	10,358.4	30,489.3	20,928.2	7,951.9	3,348.8	27,158.0	2,224.6	9,473.2	
JUL	211,106.8	113,110.2	277.2	10,394.2	30,823.0	20,756.1	8,448.5	3,285.9	27,423.4	2,342.9	9,359.0	
AUG	213,764.4	113,894.6	395.6	10,156.2	30,932.5	21,481.0	8,423.8	4,137.7	26,795.3	2,397.5	9,175.0	
SEP	218,700.5	117,023.4	376.6	10,171.5	31,975.8	21,714.4	8,795.8	5,141.0	27,265.6	2,453.3	9,129.4	
OCT	224,058.4	120,475.0	330.3	10,150.0	33,901.8	21,156.9	8,888.0	5,287.6	28,525.6	2,538.5	9,696.3	
NOV	226,391.3	121,400.1	287.5	10,361.7	34,519.6	22,027.9	9,060.9	4,652.8	28,140.7	2,566.6	9,782.4	
DEC	233,393.9	127,774.1	232.1	10,220.3	37,508.9	22,271.9	9,129.8	4,564.2	31,360.4	2,590.0	9,896.5	
2008 JAN	236,771.2	130,467.2	196.7	10,359.3	39,309.2	23,930.6	9,433.6	5,026.8	30,099.4	2,666.2	9,445.4	
FEB	241,800.3	135,147.7	209.8	11,049.1	41,032.7	24,371.9	9,714.4	5,014.1	30,820.5	2,671.7	10,263.5	
MAR	249,326.5	142,481.8	250.8	11,110.7	43,628.4	25,293.2	9,719.8	4,959.4	32,958.6	2,621.4	11,939.5	
APR	250,937.5	143,455.7	199.9	10,984.3	45,023.6	26,732.0	9,675.4	4,228.4	31,758.9	2,600.8	12,252.4	
MAY	256,767.7	148,420.9	256.6	11,380.7	45,578.6	27,614.5	10,354.5	4,327.6	32,980.4	2,695.6	13,232.4	
JUN	261,142.6	151,129.8	269.2	11,851.6	47,282.1	28,404.2	9,649.9	4,505.7	32,445.4	2,793.0	13,928.7	
JUL	265,708.3	154,836.7	291.5	11,772.2	47,709.9	28,397.9	9,738.7	4,535.1	32,988.0	2,840.6	16,562.8	
AUG	267,837.9	156,124.7	284.4	11,487.1	47,956.9	28,889.8	10,906.6	5,183.0	32,296.7	2,936.2	16,184.0	
SEP	272,931.3	160,585.3	307.6	11,830.4	48,782.3	28,438.4	11,272.7	5,389.0	33,424.6	2,912.2	18,228.1	
OCT	275,938.6	163,203.3	330.9	12,511.0	49,888.5	27,826.6	11,331.5	5,293.3	34,222.8	2,909.7	18,889.0	
NOV	273,193.9	159,609.9	299.4	12,499.2	50,135.1	26,554.3	9,083.5	5,493.1	33,372.1	2,930.5	19,242.7	
DEC P	272,175.4	157,811.4	283.2	11,743.4	49,994.4	24,863.7	9,211.7	5,631.1	33,506.1	3,090.3	19,487.5	

Notes : The industry categories are according to the Singapore Standard Industrial Classification adopted by the Singapore Department of Statistics.

The industrial classification is by end-use of loans. If this classification is not possible, the borrower's main business activity will be used.

Column 5 Includes loans to building and building co-operative societies, building developers and real estate agents.

**Table I.5A Banks: Loans and Advances of Domestic Banking Units to Non-bank Customers by Industrial Classification (continued)**

\$\$ MILLION

END OF PERIOD	LOANS AND ADVANCES INCLUDING BILLS FINANCING					
	CONSUMER LOANS					
	TOTAL	HOUSING AND BRIDGING LOANS	PROFESSIONAL AND PRIVATE INDIVIDUALS			
			CAR LOANS	CREDIT CARDS	SHARE FINANCING	OTHERS
12= 13 TO 17	13	14	15	16	17	
2004	89,180.2	58,887.1	12,552.2	3,541.1	367.9	13,831.9
2005	91,859.2	61,954.6	12,578.4	3,794.0	500.2	13,032.0
2006	93,442.4	63,345.1	12,377.9	4,175.8	901.1	12,642.5
2007	105,620.0	73,139.1	12,201.0	4,729.4	1,357.1	14,193.4
2008 P	114,363.9	79,582.0	12,466.6	5,495.2	611.8	16,208.3
2007 JAN	93,891.0	63,752.2	12,391.5	4,044.6	991.4	12,711.3
FEB	94,135.3	63,895.4	12,429.4	4,025.4	1,004.5	12,780.6
MAR	94,546.2	64,356.5	12,536.5	4,012.1	1,010.9	12,630.2
APR	95,236.4	64,916.7	12,512.8	4,042.3	1,148.2	12,616.4
MAY	95,820.5	65,526.2	12,511.4	4,093.3	1,119.3	12,570.3
JUN	96,958.1	66,319.6	12,489.9	4,297.1	1,271.3	12,580.2
JUL	97,996.8	67,351.0	12,076.4	4,159.6	1,421.0	12,988.8
AUG	99,869.6	69,122.3	12,095.8	4,176.3	1,177.2	13,298.0
SEP	101,677.1	70,472.5	12,118.8	4,334.7	1,260.6	13,490.5
OCT	103,583.5	71,828.6	12,164.7	4,358.2	1,353.0	13,879.0
NOV	104,991.4	72,707.2	12,176.3	4,513.2	1,322.8	14,271.9
DEC	105,620.0	73,139.1	12,201.0	4,729.4	1,357.1	14,193.4
2008 JAN	106,304.0	73,856.1	12,284.5	4,619.6	1,088.6	14,455.2
FEB	106,652.5	74,004.4	12,276.3	4,532.4	1,119.1	14,720.3
MAR	106,844.8	74,180.5	12,330.6	4,553.4	1,036.3	14,744.0
APR	107,481.8	74,562.0	12,386.4	4,549.1	1,078.1	14,906.2
MAY	108,346.7	75,036.8	12,424.8	4,685.1	1,125.3	15,074.7
JUN	110,012.7	75,919.5	12,549.5	4,956.5	1,153.3	15,433.9
JUL	110,871.5	76,609.9	12,563.6	4,996.7	1,107.6	15,593.7
AUG	111,713.2	77,101.0	12,545.9	5,084.2	1,021.8	15,960.3
SEP	112,346.1	77,614.8	12,387.5	5,179.0	911.6	16,253.2
OCT	112,735.2	78,535.7	12,396.9	5,187.1	662.3	15,953.2
NOV	113,583.9	78,903.7	12,430.5	5,373.8	596.6	16,279.3
DEC P	114,363.9	79,582.0	12,466.6	5,495.2	611.8	16,208.3

**Table I.5B Banks: Loans and Advances of Asian Currency Units to Non-bank Customers by Industrial Classification**

\$\$ MILLION

END OF PERIOD	LOANS AND ADVANCES INCLUDING BILLS FINANCING											
	LOANS TO BUSINESSES										PROFESSIONAL AND PRIVATE INDIVIDUALS	
	TOTAL	TOTAL	AGRICULTURE MINING AND QUARRYING	MANUFACTURING	BUILDING AND CONSTRUCTION	GENERAL COMMERCE	TRANSPORT, STORAGE AND COMMUNICATION	BUSINESS SERVICES	FINANCIAL INSTITUTIONS	BUSINESS PURPOSES		OTHERS
	1=2+12	2 =3 TO 11	3	4	5	6	7	8	9	10		11
2004	133,733.3	118,680.8	2,585.1	18,887.9	5,564.5	12,452.7	19,604.7	2,151.5	40,314.7	1,884.9	15,234.8	
2005	174,039.7	156,275.5	2,418.1	21,724.3	6,513.4	15,452.4	21,832.7	2,169.2	70,643.2	1,149.7	14,372.5	
2006	185,623.4	168,007.0	3,586.0	25,700.3	7,220.2	15,681.8	29,298.1	3,536.3	66,208.8	939.2	15,836.3	
2007	256,472.0	233,847.3	5,390.5	37,716.6	11,736.9	19,006.1	38,883.2	4,612.5	86,126.2	1,109.0	29,266.3	
2008 P	286,893.5	257,783.2	7,569.0	43,010.7	13,763.4	20,155.6	53,058.0	9,233.3	72,850.2	1,071.0	37,072.0	
2007 JAN	187,362.4	170,005.5	3,476.5	26,802.9	7,050.2	15,591.7	29,786.9	3,512.9	67,200.8	882.4	15,701.2	
FEB	192,052.8	174,235.6	3,761.8	27,347.5	7,177.3	15,961.0	30,139.1	3,655.9	68,722.6	889.2	16,581.2	
MAR	197,048.1	178,615.4	3,488.6	28,955.3	7,493.8	15,983.7	30,698.6	3,782.1	70,199.4	893.7	17,120.2	
APR	201,938.5	182,629.1	3,648.6	30,478.0	7,586.3	17,563.7	31,403.9	3,836.3	69,215.4	890.7	18,006.2	
MAY	214,221.9	194,926.0	3,560.9	36,719.1	8,555.3	17,761.3	32,040.6	3,992.1	72,395.5	903.0	18,998.2	
JUN	220,725.7	199,901.4	3,110.2	35,462.7	8,882.9	17,487.8	32,927.0	4,269.8	76,970.9	923.3	19,866.8	
JUL	222,912.4	201,760.3	3,464.0	34,970.0	9,092.8	18,679.3	33,538.9	4,059.2	75,623.6	990.5	21,342.0	
AUG	233,393.0	212,256.4	3,662.3	36,249.3	9,728.1	18,509.6	34,265.0	3,676.4	80,738.8	1,065.1	24,361.8	
SEP	239,389.9	216,609.8	3,928.5	37,213.7	9,866.6	17,789.5	34,547.2	4,868.3	81,766.8	998.1	25,631.1	
OCT	237,515.2	214,618.9	3,725.5	34,858.7	10,025.4	17,932.6	35,085.7	5,495.0	80,778.9	1,058.0	25,659.1	
NOV	247,218.3	223,294.1	3,951.5	36,948.4	10,552.9	18,519.9	36,016.0	5,556.6	82,922.0	1,111.4	27,715.4	
DEC	256,472.0	233,847.3	5,390.5	37,716.6	11,736.9	19,006.1	38,883.2	4,612.5	86,126.2	1,109.0	29,266.3	
2008 JAN	261,190.2	238,034.6	5,241.4	36,688.5	11,352.8	20,236.8	39,900.6	5,184.3	89,057.1	1,218.0	29,155.1	
FEB	270,745.4	239,027.5	5,144.7	36,845.4	11,350.1	21,331.7	40,426.3	5,365.9	86,436.7	1,208.0	30,918.7	
MAR	281,668.6	248,367.0	4,965.1	40,413.4	11,364.5	22,623.6	41,676.5	5,227.1	85,946.5	1,298.2	34,852.1	
APR	284,086.7	252,462.6	5,654.8	40,463.1	11,825.1	23,707.4	42,285.7	5,011.9	85,648.1	1,324.8	36,541.7	
MAY	288,668.8	255,007.9	5,548.0	37,664.3	11,774.2	23,939.6	43,786.6	5,361.0	86,784.0	1,324.7	38,825.5	
JUN	300,183.4	264,525.0	5,570.0	38,342.1	13,264.0	25,274.7	45,981.8	6,456.9	86,405.2	1,312.6	41,917.7	
JUL	308,207.8	272,127.7	5,941.1	38,321.9	13,138.1	26,203.7	47,518.0	7,010.2	88,598.7	1,307.6	44,088.4	
AUG	318,128.8	280,899.1	6,645.8	40,895.5	13,376.0	26,608.2	49,162.3	7,270.0	89,398.9	1,303.5	46,238.9	
SEP	320,425.3	282,518.1	6,780.1	42,451.6	13,282.3	24,877.8	50,383.3	7,816.1	90,324.8	1,296.5	45,305.6	
OCT	314,099.7	280,829.6	7,685.7	44,068.2	13,738.8	25,901.7	53,212.3	7,869.9	83,803.7	1,202.4	43,346.9	
NOV	306,096.5	275,312.7	7,928.9	44,646.3	13,893.6	23,822.6	55,220.6	8,135.4	79,298.5	1,118.2	41,248.6	
DEC P	286,893.5	257,783.2	7,569.0	43,010.7	13,763.4	20,155.6	53,058.0	9,233.3	72,850.2	1,071.0	37,072.0	

Notes : The industry categories are according to the Singapore Standard Industrial Classification adopted by the Singapore Department of Statistics. The industrial classification is by end-use of loans. If this classification is not possible, the borrower's main business activity will be used.

**Table I.5B Banks: Loans and Advances of Asian Currency Units to Non-bank Customers by Industrial Classification (continued)**

S\$ MILLION

END OF PERIOD	LOANS AND ADVANCES INCLUDING BILLS FINANCING					
	CONSUMER LOANS					
	TOTAL	HOUSING AND BRIDGING LOANS	PROFESSIONAL AND PRIVATE INDIVIDUALS			
			CAR LOANS	CREDIT CARDS	SHARE FINANCING	OTHERS
12= 13 TO 17	13	14	15	16	17	
2004	15,052.6	1,408.9	0.0	0.0	23.7	13,620.0
2005	17,764.3	1,444.3	0.0	0.0	13.9	16,306.1
2006	17,616.4	1,914.5	0.0	0.0	12.3	15,689.6
2007	22,624.5	2,449.6	0.0	0.0	265.6	19,909.3
2008 P	29,110.2	2,848.4	0.0	0.0	1,226.8	25,035.0
2007 JAN	17,356.8	1,887.2	0.0	0.0	13.2	15,456.4
FEB	17,817.1	1,919.5	0.0	0.0	16.7	15,880.9
MAR	18,432.7	1,961.9	0.0	0.0	23.8	16,447.0
APR	19,309.4	2,015.0	0.0	0.0	42.2	17,252.2
MAY	19,295.9	2,023.5	0.0	0.0	39.4	17,233.0
JUN	20,824.2	2,147.7	0.0	0.0	447.7	18,228.8
JUL	21,152.4	2,189.4	0.0	0.0	304.2	18,658.8
AUG	21,136.7	2,237.0	0.0	0.0	287.8	18,611.9
SEP	22,780.2	2,286.2	0.0	0.0	303.9	20,190.1
OCT	22,896.1	2,333.9	0.0	0.0	312.6	20,249.6
NOV	23,924.1	2,434.9	0.0	0.0	305.2	21,184.0
DEC	22,624.5	2,449.6	0.0	0.0	265.6	19,909.3
2008 JAN	23,155.7	2,514.6	0.0	0.0	245.1	20,396.0
FEB	31,717.8	2,609.0	0.0	0.0	1,594.2	27,514.6
MAR	33,301.5	2,644.9	0.0	0.0	1,521.3	29,135.3
APR	31,624.0	2,699.5	0.0	0.0	2,206.2	26,718.3
MAY	33,660.9	2,668.8	0.0	0.0	1,500.3	29,491.8
JUN	35,658.5	2,809.6 r	0.0	0.0	1,622.8	31,226.1 r
JUL	36,080.1	2,824.8 r	0.0	0.0	1,695.3	31,560.0 r
AUG	37,229.8	2,903.5 r	0.0	0.0	1,755.9	32,570.4 r
SEP	37,907.3	2,953.8 r	0.0	0.0	1,710.1	33,243.4 r
OCT	33,269.9	2,966.4 r	0.0	0.0	1,418.1	28,885.4 r
NOV	30,783.9	2,938.2	0.0	0.0	1,248.6	26,597.1
DEC P	29,110.2	2,848.4	0.0	0.0	1,226.8	25,035.0

**Table I.6 Banks: Limits Granted and Percentage Utilised for Loans and Advances to Non-bank Customers by Industrial Classification**

END OF PERIOD	LOANS TO BUSINESSES											
	TOTAL		TOTAL		AGRICULTURE, MINING AND QUARRYING		MANUFACTURING		BUILDING AND CONSTRUCTION		GENERAL COMMERCE	
	LIMITS GRANTED	UTILISED	LIMITS GRANTED	UTILISED	LIMITS GRANTED	UTILISED	LIMITS GRANTED	UTILISED	LIMITS GRANTED	UTILISED	LIMITS GRANTED	UTILISED
	\$S\$M	%	\$S\$M	%	\$S\$M	%	\$S\$M	%	\$S\$M	%	\$S\$M	%
	1=3+21	2	3=5+7+9+11+13+15+17+19	4	5	6	7	8	9*	10*	11	12
2004	524,006.8	56.8	354,388.7	54.6	4,444.5	59.6	50,369.4	55.5	39,766.1	73.1	73,922.1	35.5
2005	613,413.3	55.7	423,853.1	54.7	3,947.3	67.8	56,906.9	54.4	40,785.2	72.3	88,494.1	34.0
2006	681,985.7	53.5	477,971.2	53.1	5,657.7	67.5	62,526.7	57.1	45,141.8	74.3	92,570.8	33.1
2007	842,655.5	55.1	600,402.9	56.0	7,966.9	65.4	73,118.0	63.8	66,906.6	73.3	102,862.2	32.9
2008 P	976,287.9	54.8	694,965.3	56.4	9,830.3	79.1	78,974.5	68.1	84,528.6	75.1	119,060.8	32.0
2007 JAN	691,134.7	53.5	486,470.0	53.1	5,672.9	65.5	63,347.9	57.8	46,633.5	72.9	94,060.1	32.5
FEB	704,866.7	53.3	496,965.3	53.1	6,054.2	66.4	62,931.5	59.0	47,951.8	72.4	95,105.7	32.4
MAR	703,746.2	54.5	505,594.2	53.6	5,955.6	61.5	66,254.1	58.3	48,519.9	73.4	95,190.1	32.3
APR	727,774.1	53.4	513,693.3	53.3	6,010.9	64.2	66,666.9	59.9	49,576.0	74.3	96,863.7	32.7
MAY	748,331.8	53.6	529,456.2	54.1	5,816.4	65.1	74,615.4	62.3	51,610.9	74.7	97,893.8	32.4
JUN	762,773.2	54.1	538,462.9	54.7	5,377.4	60.8	71,944.0	62.1	52,222.8	75.3	99,714.4	32.1
JUL	773,147.0	53.9	545,843.2	54.6	5,630.2	65.5	71,076.0	62.3	53,431.7	74.5	101,182.3	33.1
AUG	794,114.2	53.9	562,256.2	54.7	5,865.1	66.0	72,810.4	62.1	54,310.0	74.5	100,980.9	33.5
SEP	807,213.8	54.3	569,321.4	55.1	6,273.1	64.5	73,936.8	62.1	57,345.7	72.6	100,401.7	32.9
OCT	807,689.3	54.6	571,394.5	55.1	6,079.6	62.8	71,222.1	61.4	58,790.8	74.4	100,267.3	32.9
NOV	816,810.9	55.3	573,611.9	56.2	6,507.0	60.4	72,891.5	63.1	60,112.6	74.6	101,934.2	33.3
DEC	842,655.5	55.1	600,402.9	56.0	7,966.9	65.4	73,118.0	63.8	66,906.6	73.3	102,862.2	32.9
2008 JAN	842,168.3	56.2	599,907.4	57.3	8,393.2	61.1	72,021.7	63.9	67,990.8	74.2	103,293.5	35.7
FEB	863,239.6	56.3	606,394.7	57.3	8,315.1	60.9	71,624.7	64.6	70,259.6	74.3	105,285.2	36.3
MAR	883,170.6	56.7	623,274.7	57.8	8,157.4	61.2	76,278.5	64.8	74,066.2	74.0	105,139.7	36.9
APR	890,158.7	56.6	626,957.3	58.1	8,255.4	68.3	74,052.0	66.8	74,787.3	75.7	107,552.0	38.0
MAY	900,998.1	56.8	633,482.5	58.4	8,005.4	71.3	72,237.6	65.2	74,329.4	76.9	108,840.3	38.1
JUN	921,371.6	56.9	649,996.5	58.3	8,167.6	71.5	73,897.6	65.5	77,876.5	77.5	111,288.1	38.1
JUL	937,531.1	57.2	659,348.9	59.0	8,366.9	74.5	75,325.3	64.2	79,229.1	76.5	111,621.3	39.0
AUG	959,319.1	57.1	676,907.8	58.9	9,289.2	74.6	76,993.3	66.0	81,857.3	74.7	114,814.3	38.8
SEP	975,587.8	56.9	689,270.0	58.7	9,567.4	74.0	78,896.2	67.0	82,294.0	75.1	117,657.5	36.2
OCT	987,550.8	56.3	699,005.4	58.6	10,145.1	78.4	82,208.1	67.1	84,318.5	75.2	120,669.5	36.9
NOV	995,162.2	55.2	705,657.6	57.4	10,199.6	80.1	82,438.7	67.6	85,475.9	74.6	121,053.6	34.9
DEC P	976,287.9	54.8	694,965.3	56.4	9,830.3	79.1	78,974.5	68.1	84,528.6	75.1	119,060.8	32.0

Note: Data includes both Domestic Banking Units and Asian Currency Units.  
Columns 9 & 10 Includes loans to building and building co-operative societies, building developers and real estate agents.

**Table 1.6 Banks: Limits Granted and Percentage Utilised for Loans and Advances to Non-bank Customers by Industrial Classification (continued)**

END OF PERIOD	LOANS TO BUSINESSES								LOANS TO CONSUMERS					
	TRANSPORT, STORAGE AND COMMUNICATION		BUSINESS SERVICES		FINANCIAL INSTITUTIONS		OTHERS		TOTAL		HOUSING AND BRIDGING LOANS		PROFESSIONAL AND PRIVATE INDIVIDUALS	
	LIMITS GRANTED	UTILISED	LIMITS GRANTED	UTILISED	LIMITS GRANTED	UTILISED	LIMITS GRANTED	UTILISED	LIMITS GRANTED	UTILISED	LIMITS GRANTED	UTILISED	LIMITS GRANTED	UTILISED
	S\$M	%	S\$M	%	S\$M	%	S\$M	%	S\$M	%	S\$M	%	S\$M	%
	13	14	15	16	17	18	19	20	21= 23+25	22	23	24	25	26
2004	36,594.2	64.2	9,575.8	52.4	102,426.0	58.7	37,290.6	50.7	169,618.2	61.4	67,860.0	88.9	101,758.2	43.1
2005	43,697.3	59.8	8,462.7	53.9	146,941.1	61.7	34,618.5	49.9	189,560.1	57.8	70,787.1	89.6	118,773.0	38.9
2006	55,972.5	63.2	11,534.1	57.7	156,319.0	56.0	48,248.7	42.9	204,014.5	54.4	73,785.8	88.4	130,228.6	35.2
2007	71,480.5	66.8	13,622.3	61.6	193,807.0	58.7	70,639.4	44.5	242,252.6	52.9	86,109.6	87.8	156,143.0	33.6
2008 P	86,023.1	72.0	19,425.3	74.6	197,969.2	52.2	99,153.4	49.2	281,322.6	51.0	92,456.6	89.2	188,866.0	32.3
2007 JAN	57,135.3	62.9	11,372.4	58.7	157,943.8	56.7	50,304.1	42.4	204,664.7	54.4	74,107.9	88.6	130,556.8	34.9
FEB	58,018.0	63.3	12,057.2	57.4	163,009.2	56.2	51,837.7	42.6	207,901.5	53.8	74,810.6	88.0	133,090.9	34.7
MAR	58,599.6	63.9	11,904.8	56.8	167,087.8	56.9	52,082.4	44.1	198,152.0	57.0	76,169.9	87.1	121,982.0	38.2
APR	58,947.7	64.7	12,341.5	55.6	168,763.8	55.2	54,522.6	43.1	214,080.8	53.5	77,007.8	86.9	137,073.0	34.7
MAY	60,076.2	65.1	12,594.0	55.9	171,256.5	55.9	55,593.1	42.7	218,875.6	52.6	78,325.6	86.2	140,550.1	33.8
JUN	63,906.9	63.7	12,826.3	56.2	175,939.9	58.1	56,531.2	44.6	224,310.3	52.5	79,690.1	85.9	144,620.2	34.1
JUL	65,736.1	63.6	13,159.3	52.7	177,663.8	57.0	57,963.7	45.9	227,303.8	52.4	80,751.0	86.1	146,552.7	33.8
AUG	67,364.2	63.1	14,244.5	51.1	185,046.1	57.0	61,634.9	46.7	231,858.1	52.2	82,734.3	86.3	149,123.7	33.3
SEP	67,386.3	64.0	15,574.6	60.6	186,243.6	57.5	62,159.6	47.3	237,892.4	52.3	84,004.0	86.6	153,888.3	33.6
OCT	68,138.2	64.2	16,508.5	61.4	185,990.8	57.6	64,397.2	46.2	236,294.7	53.5	84,557.6	87.7	151,737.2	34.4
NOV	70,171.2	64.0	14,525.1	65.3	178,583.0	60.5	68,887.3	45.5	243,199.1	52.9	85,674.0	87.7	157,525.0	34.0
DEC	71,480.5	66.8	13,622.3	61.6	193,807.0	58.7	70,639.4	44.5	242,252.6	52.9	86,109.6	87.8	156,143.0	33.6
2008 JAN	71,841.9	68.2	13,809.8	68.3	191,935.8	60.3	70,620.7	44.1	242,260.9	53.4	86,488.3	88.3	155,772.5	34.0
FEB	73,703.1	67.5	14,206.6	68.0	188,590.1	60.3	74,410.2	44.1	256,844.9	53.8	86,241.3	88.8	170,603.6	36.1
MAR	75,213.9	67.8	14,475.2	67.3	191,871.7	59.7	78,072.1	47.7	259,895.9	53.9	87,162.9	88.1	172,732.9	36.6
APR	75,516.7	68.3	14,391.0	61.9	190,778.8	59.0	81,624.1	47.3	263,201.4	52.8	88,108.9	87.7	175,092.5	35.3
MAY	77,845.6	69.0	14,799.1	62.7	190,868.3	59.8	86,556.7	47.8	267,515.6	53.1	88,617.9	87.7	178,897.7	35.9
JUN	80,227.4	68.7	15,904.2	66.0	191,623.2	58.8	91,011.9	47.8	271,375.0	53.7	89,910.5	87.6	181,464.6	36.9
JUL	81,794.4	69.3	16,409.5	67.5	192,750.1	60.0	93,852.3	49.8	278,182.1	52.8	90,906.1	87.4	187,276.0	36.0
AUG	84,086.0	70.9	17,447.1	68.7	194,332.7	59.6	98,087.8	48.6	282,411.3	52.7	91,633.9	87.3	190,777.4	36.1
SEP	86,343.4	70.9	16,718.9	76.1	198,396.8	59.6	99,395.9	48.7	286,317.8	52.5	92,431.7	87.2	193,886.1	35.9
OCT	89,049.9	71.9	16,762.4	75.7	197,496.1	57.5	98,355.9	49.5	288,545.4	50.6	92,621.7	88.0	195,923.7	32.9
NOV	89,802.9	71.1	17,454.5	75.9	198,841.1	54.9	100,391.4	48.6	289,504.6	49.9	92,754.3	88.2	196,750.3	31.8
DEC P	86,023.1	72.0	19,425.3	74.6	197,969.2	52.2	99,153.4	49.2	281,322.6	51.0	92,456.6	89.2	188,866.0	32.3



**Table 1.7 Banks: Types of Loans and Advances of Domestic Banking Units  
to Non-bank Customers**

S\$ MILLION

END OF PERIOD	LOANS AND ADVANCES TO NON-BANK CUSTOMERS				
	TOTAL	BILLS FINANCING	OVERDRAFTS	TRUST RECEIPTS	OTHER LOANS AND ADVANCES
	1=2 TO 5	2	3	4	5
2004	179,088.6	5,544.8	13,562.9	4,649.5	155,331.4
2005	183,109.4	5,308.1	11,790.0	5,095.7	160,915.6
2006	194,597.6	6,160.2	10,781.5	5,407.2	172,248.7
2007	233,393.9	9,035.2	10,437.2	6,431.8	207,489.8
2008 P	272,175.4	9,489.7	9,720.1	6,504.0	246,461.6
2007 JAN	196,448.0	6,182.9	10,771.9	5,400.6	174,092.6
FEB	198,420.3	6,598.4	10,758.0	5,344.6	175,719.3
MAR	201,424.8	6,835.6	10,618.3	5,347.6	178,623.4
APR	201,795.2	6,817.6	10,698.9	5,520.0	178,758.7
MAY	203,802.3	7,045.3	10,405.5	5,859.0	180,492.4
JUN	209,074.3	7,219.6	10,222.0	6,236.9	185,395.8
JUL	211,106.8	7,131.3	10,302.4	6,340.6	187,332.6
AUG	213,764.4	7,824.3	10,258.3	6,461.1	189,220.7
SEP	218,700.5	7,889.4	10,191.1	6,488.9	194,131.1
OCT	224,058.4	7,972.4	10,306.2	6,045.1	199,734.8
NOV	226,391.3	8,559.9	10,297.3	6,342.1	201,192.1
DEC	233,393.9	9,035.2	10,437.2	6,431.8	207,489.8
2008 JAN	236,771.2	9,373.5	10,287.1	6,661.2	210,449.4
FEB	241,800.3	10,156.8	10,557.6	6,403.5	214,682.4
MAR	249,326.5	11,387.8	10,898.0	6,462.0	220,578.7
APR	250,937.5	11,478.8	10,715.4	6,709.7	222,033.6
MAY	256,767.7	12,525.1	10,787.3	6,828.9	226,626.4
JUN	261,142.6	13,798.5	11,229.8	6,774.0	229,340.4
JUL	265,708.3	13,945.4	10,897.9	6,929.7	233,935.4
AUG	267,837.9	14,510.1	11,222.1	7,370.2	234,735.6
SEP	272,931.3	14,290.0	11,451.2	7,303.5	239,886.6
OCT	275,938.6	12,899.3	11,970.1	7,721.9	243,347.3
NOV	273,193.9	11,489.4	9,819.8	6,967.8	244,916.9
DEC P	272,175.4	9,489.7	9,720.1	6,504.0	246,461.6

**Table I.8 Banks: Statutory Liquidity Position of Domestic Banking Units**

AS AT	LIABILITIES BASE	STATUTORY LIQUID ASSETS	LIQUIDITY RATIO	BALANCES WITH MAS
	S\$ MILLION		PER CENT	S\$ MILLION
	1	2	3	4
2004	209,773.1	45,425.6	21.7	6,775.0
2005	225,133.0	43,596.1	19.4	7,466.1
2006	262,876.3	49,877.4	19.0	8,802.0
2007	303,624.1	58,628.1	19.3	9,530.4
2008 P	343,846.6	65,794.2	19.1	13,466.0
2007 JAN	268,170.3	50,650.7	18.9	8,147.6
FEB	272,358.8	51,207.7	18.8	8,546.0
MAR	279,746.5	53,032.3	19.0	8,380.6
APR	284,940.3	54,737.5	19.2	8,953.5
MAY	293,030.6	56,774.5	19.4	8,957.7
JUN	293,737.7	57,557.1	19.6	9,082.9
JUL	293,092.5	56,570.6	19.3	9,005.9
AUG	294,041.5	59,079.0	20.1	9,343.9
SEP	296,796.1	60,878.2	20.5	9,432.1
OCT	299,273.4	58,190.7	19.4	8,913.5
NOV	298,116.4	59,444.7	19.9	9,231.9
DEC	303,624.1	58,628.1	19.3	9,530.4
2008 JAN	298,259.7	58,812.1	19.7	9,954.5
FEB	306,297.7	60,778.6	19.8	9,332.7
MAR	316,076.5	60,455.7	19.1	9,782.8
APR	320,515.8	59,060.5	18.4	10,355.0
MAY	320,011.5	60,052.0	18.8	9,619.3
JUN	320,931.5	62,118.5	19.4	9,967.9
JUL	325,057.5	58,730.0	18.1	10,563.2
AUG	340,828.0	59,123.3	17.3	11,515.3
SEP	318,581.6	58,914.0	18.5	11,117.6
OCT	346,857.5	58,662.4	16.9	12,134.7
NOV	348,084.7	64,098.9	18.4	11,749.8
DEC P	343,846.6	65,794.2	19.1	13,466.0

Note : Data for liquid assets and liquidity ratios are as at the last day of the month while data for liabilities base are the average of the daily eligible liabilities for a two-week liabilities base period beginning on a Thursday and ending on a Wednesday.

Table I.9 Banks: Domestic Banking Units External Assets and Liabilities

S\$ MILLION

END OF PERIOD	ASSETS							LIABILITIES					NET
		FOREIGN NOTES AND COINS	AMOUNTS DUE FROM BANKS	LOANS AND ADVANCES TO NON-BANK CUSTOMERS	BILLS DISCOUNTED OR PURCHASED	SECURITIES AND EQUITIES	OTHER FOREIGN ASSETS		DEPOSITS OF NON-BANK CUSTOMERS	AMOUNTS DUE TO BANKS	BILLS PAYABLE	OTHER FOREIGN LIABILITIES	FOREIGN ASSETS/ LIABILITIES (-)
	1=2 TO 7	2	3*	4	5	6	7	8=9 TO 12	9	10*	11	12*	13=1 - 8
2004	101,048.1	17.9	81,240.3	4,940.9	3,139.0	8,040.8	3,669.2	110,602.3	11,560.5	96,138.6	15.8	2,887.4	-9,554.2
2005	117,688.1	20.4	94,501.0	6,954.6	3,233.3	9,602.2	3,376.6	115,768.0	15,833.5	97,838.3	24.2	2,072.0	1,920.1
2006	168,357.3	27.7	132,434.8	9,009.2	3,506.9	12,919.4	10,459.3	151,479.4	22,475.7	126,588.5	10.8	2,404.4	16,877.9
2007	185,190.6	28.3	134,904.7	13,947.7	5,110.1	13,594.3	17,605.5	179,639.1	29,997.2	148,295.1	20.0	1,326.8	5,551.5
2008 P	222,883.1	29.5	164,728.9	16,631.9	5,582.5	13,905.0	22,005.3	208,529.0	31,013.0	166,117.9	13.3	11,384.8	14,354.1
2007 JAN	171,393.6	26.0	135,371.6	9,434.6	3,612.1	13,059.7	9,889.6	143,887.4	22,954.8	118,511.9	10.4	2,410.3	27,506.2
FEB	176,201.6	30.3	137,319.4	9,950.6	3,833.1	13,657.4	11,410.8	148,485.6	23,981.1	121,844.8	15.5	2,644.2	27,716.0
MAR	182,948.5	29.8	144,399.7	10,084.8	3,841.7	13,333.0	11,259.5	150,588.6	23,664.9	123,851.3	10.1	3,062.3	32,359.9
APR	182,610.0	30.7	142,521.0	10,308.4	3,899.3	13,541.9	12,308.7	157,369.1	25,491.8	129,020.0	13.4	2,843.9	25,240.9
MAY	191,448.7	28.2	150,791.4	10,486.8	3,958.0	14,324.1	11,860.2	166,533.2	27,511.2	136,356.0	10.8	2,655.2	24,915.5
JUN	181,621.1	26.7	140,274.3	11,174.5	4,034.2	14,382.4	11,729.0	160,847.4	25,970.7	133,077.5	16.4	1,782.8	20,773.7
JUL	179,888.6	31.9	138,277.1	11,626.3	3,890.7	13,222.5	12,840.1	160,308.6	26,141.3	131,755.9	14.1	2,397.3	19,580.0
AUG	181,997.5	26.2	141,638.7	12,449.4	4,185.9	12,692.6	11,004.7	165,615.2	27,857.7	135,833.1	11.9	1,912.5	16,382.3
SEP	180,525.8	31.8	137,501.2	12,686.5	4,131.6	12,602.2	13,572.5	166,670.5	27,929.4	136,241.9	9.8	2,489.4	13,855.3
OCT	187,535.6	28.7	140,065.2	13,525.8	4,318.3	12,949.8	16,647.8	178,285.1	29,750.1	145,080.7	13.3	3,441.0	9,250.5
NOV	184,508.2	26.1	136,450.9	13,603.4	4,674.6	12,966.6	16,786.6	177,104.9	30,868.6	142,546.7	18.5	3,671.1	7,403.3
DEC	185,190.6	28.3	134,904.7	13,947.7	5,110.1	13,594.3	17,605.5	179,639.1	29,997.2	148,295.1	20.0	1,326.8	5,551.5
2008 JAN	191,272.8	35.5	136,028.9	14,068.6	5,585.4	14,642.1	20,912.3	187,057.3	30,848.9	150,512.5	13.5	5,682.4	4,215.5
FEB	197,998.1	36.4	139,542.9	14,599.9	6,262.8	14,384.3	23,171.8	192,157.4	31,941.7	154,937.5	14.5	5,263.7	5,840.7
MAR	210,442.0	38.1	150,733.4	15,189.1	7,083.1	14,566.5	22,831.8	201,011.4 r	31,464.8	163,794.3	14.8	5,737.5 r	9,430.6 r
APR	207,560.5	29.1	147,299.0	14,568.5	7,163.5	14,045.8	24,454.6	196,674.6	32,407.5	160,763.1	9.9	3,494.1	10,885.9
MAY	211,219.8	26.1	150,567.8	14,731.1	8,123.8	14,352.6	23,418.4	203,493.1	34,734.6	166,428.7	16.1	2,313.7	7,726.7
JUN	217,955.7	31.0	154,905.9	15,505.1	8,927.1	14,381.8	24,204.8	202,141.2	31,886.1	167,504.8	9.9	2,740.4	15,814.5
JUL	219,652.0	27.1	157,722.0	15,784.7	9,425.0	14,518.3	22,174.9	200,870.4	31,937.5	166,803.3	16.3	2,113.3	18,781.6
AUG	222,873.6	29.7	163,488.2	15,795.7	9,688.9	14,674.8	19,196.3	210,455.1	32,790.7	175,625.3	10.9	2,028.2	12,418.5
SEP	218,520.8	29.3	160,564.6	17,133.3	9,430.4	14,329.2	17,034.0	202,029.0	32,414.6	167,792.1	10.5	1,811.8	16,491.8
OCT	210,593.2	30.2	157,123.5	17,104.8	8,426.8	14,100.6	13,807.3	196,728.0	30,763.5	160,831.4	19.1	5,114.0	13,865.2
NOV	211,812.5	34.5	160,690.1	16,794.8	7,258.3	14,028.6	13,006.2	201,724.0	30,675.4	164,619.6	10.9	6,418.1	10,088.5
DEC P	222,883.1	29.5	164,728.9	16,631.9	5,582.5	13,905.0	22,005.3	208,529.0	31,013.0	166,117.9	13.3	11,384.8	14,354.1

Columns 3 & 10 Includes Asian Currency Units.

Column 12 Includes reserves and profit and loss accounts of foreign incorporated banks operating in Singapore.

Table I.10 Banks: Combined Assets and Liabilities of Domestic Banking Units (DBUs) and Asian Currency Units (ACUs)<sup>1/</sup>

S\$ MILLION

END OF PERIOD	ASSETS / LIABILITIES OF DBUs AND ACUs					
	LOCAL BANKS	OF WHICH EXTERNAL		FOREIGN BANKS	OF WHICH EXTERNAL	
		ASSETS	LIABILITIES		ASSETS	LIABILITIES
	1	2	3	4	5	6
2004	305,091.3	99,921.1	59,477.5	873,508.4	678,397.3	674,087.5
2005	313,567.0	109,560.0	54,736.3	948,827.5	741,240.0	737,262.3
2006	354,740.7	127,903.2	64,189.3	1,008,928.0	755,838.4	744,053.0
2007	416,111.8	149,251.8	80,953.2	1,235,001.2	927,112.2	935,143.4
2008 P	454,612.3	165,019.4	83,616.5	1,294,698.6	920,100.8	944,466.6
2007 JAN	358,332.7	132,782.4	62,961.8	1,015,585.9	760,786.3	745,001.1
FEB	366,884.8	133,734.7	64,996.6	1,030,811.5	767,129.2	749,157.6
MAR	368,657.4	135,609.2	66,498.1	1,060,395.0	801,884.7	773,871.3
APR	377,143.8	135,372.4	64,477.4	1,099,744.9	818,952.9	800,122.6
MAY	384,212.8	139,186.6	67,164.2	1,102,313.0	820,370.5	808,788.5
JUN	384,818.4	139,717.4	64,661.1	1,114,706.2	832,264.9	822,389.0
JUL	389,695.2	138,896.0	65,914.0	1,124,145.1	841,007.6	831,404.9
AUG	393,524.3	141,200.8	68,824.4	1,156,022.5	863,902.5	852,527.3
SEP	404,720.9	146,672.6	73,293.4	1,187,234.8	885,434.0	871,681.3
OCT	413,767.2	152,444.1	79,274.7	1,199,157.7	894,982.4	886,009.9
NOV	411,097.3	147,163.5	77,019.5	1,223,337.0	911,580.2	912,536.0
DEC	416,111.8	149,251.8	80,953.2	1,235,001.2	927,112.2	935,143.4
2008 JAN	427,812.9	155,450.8	86,092.1	1,276,798.2	943,712.0	954,016.5
FEB	430,100.5	154,566.9	85,147.0	1,314,451.1	968,392.6	985,020.4
MAR	443,782.9	164,045.9	88,117.1	1,318,386.3 r	971,230.4 r	1,001,428.2 r
APR	436,141.9	159,631.8	78,220.1	1,296,565.8	944,916.7	974,261.8
MAY	436,592.5	157,697.4	76,978.6	1,283,752.8	938,270.0	970,406.7
JUN	444,517.7	161,502.1	79,867.9	1,277,934.6	933,695.8	968,049.5
JUL	447,954.7	163,788.1	81,538.3	1,301,821.8	949,640.2	986,685.8
AUG	444,926.1	161,990.9	80,703.7	1,319,142.4	949,588.6	989,313.3
SEP	448,980.7	163,335.7	81,152.3	1,354,243.6	978,594.8	1,025,452.8
OCT	450,477.5	163,116.9	80,136.9	1,393,205.9 r	1,002,095.3 r	1,040,258.1 r
NOV	453,451.0	164,962.5	82,367.7	1,355,510.1	966,747.0	994,065.9
DEC P	454,612.3	165,019.4	83,616.5	1,294,698.6	920,100.8	944,466.6

Note : ACUs are treated as resident units in this table.

<sup>1/</sup> Combined assets/liabilities of DBUs and ACUs excluding inter-unit transactions.

Table I.11 Asian Dollar Market: Assets of Asian Currency Units

US \$ MILLION

END OF PERIOD	TOTAL ASSETS 1=2+3+7+8	LOANS TO NON-BANK CUSTOMERS 2	INTERBANK FUNDS				DEBT SECURITIES AND EQUITIES 7	OTHER ASSETS 8
			TOTAL 3=4+5+6	IN SINGAPORE 4	INTER-ASIAN CURRENCY UNITS 5	OUTSIDE SINGAPORE 6		
2004	581,562.5	93,494.2	385,302.2	43,932.1	31,428.3	309,941.8	72,570.9	30,195.2
2005	611,377.4	120,865.5	389,485.1	40,766.4	29,102.0	319,616.7	73,424.9	27,601.8
2006	698,648.5	139,499.6	434,022.9	51,409.5	43,628.2	338,985.2	89,675.0	35,451.0
2007	906,936.3	197,781.6	532,661.4	66,398.3	53,597.6	412,665.5	126,630.5	49,862.8
2008 P	912,946.4	214,943.0	498,819.9	64,162.0	54,599.6	380,058.3	93,225.1	105,958.5
2007 JAN	708,575.5	140,708.0	436,510.0	50,468.5	45,974.8	340,066.7	94,770.0	36,587.4
FEB	717,903.3	143,895.1	437,884.8	52,278.3	47,226.1	338,380.4	97,413.7	38,709.7
MAR	739,854.6	145,615.1	456,383.0	52,764.8	43,219.2	360,399.0	98,845.4	39,011.2
APR	761,818.8	148,785.8	465,791.5	54,498.9	48,705.3	362,587.3	104,528.8	42,712.6
MAY	761,934.2	156,067.6	450,321.9	53,534.2	46,739.1	350,048.5	110,027.5	45,517.3
JUN	769,984.0	160,428.3	455,347.1	54,005.4	43,649.6	357,692.1	109,342.4	44,866.2
JUL	788,353.3	163,719.6	461,593.7	56,087.5	43,966.1	361,540.2	112,355.5	50,684.4
AUG	801,939.0	170,013.7	476,246.9	56,849.2	45,553.9	373,843.8	107,753.0	47,925.5
SEP	845,840.0	178,387.3	497,708.8	58,182.7	50,348.0	389,178.0	118,331.2	51,412.8
OCT	881,780.0	182,493.5	517,680.1	66,390.8	51,448.0	399,841.3	126,520.1	55,086.4
NOV	893,664.7	190,728.0	516,888.7	63,801.3	49,971.0	403,116.3	127,031.3	59,016.8
DEC	906,936.3	197,781.6	532,661.4	66,398.3	53,597.6	412,665.5	126,630.5	49,862.8
2008 JAN	947,033.5	204,372.7	545,283.1	70,173.4	56,385.7	418,723.9	133,385.7	63,991.9
FEB	981,554.1	208,970.8	561,358.7	73,967.9	57,394.8	429,996.1	140,438.3	70,786.3
MAR	993,748.4 r	220,881.0	558,890.7	76,688.5	50,524.1	431,678.1	139,825.1 r	74,151.7 r
APR	976,131.0	223,868.6	546,285.7	72,888.6	55,465.2	417,931.8	143,194.0	62,782.8
MAY	963,504.0	226,659.0	533,395.9	73,329.0	54,249.2	405,817.8	138,689.4	64,759.6
JUN	964,408.5	235,209.3	522,576.5	75,566.1	48,798.2	398,212.2	133,166.3	73,456.4
JUL	972,672.5	240,470.4	533,947.0	69,862.8	52,800.0	411,284.3	131,481.6	66,773.5
AUG	960,919.4	240,103.0	521,818.3	76,161.0	54,673.2	390,984.0	122,827.9	76,170.2
SEP	968,992.0	240,669.4	524,186.5	69,661.0	50,017.2	404,508.3	112,383.9	91,752.2
OCT	969,625.8 r	228,351.7	525,965.4	65,843.7	49,900.5	410,221.2	97,787.8	117,520.8 r
NOV	925,147.5	218,687.6	496,018.9	65,312.7	52,060.9	378,645.3	92,371.9	118,069.2
DEC P	912,946.4	214,943.0	498,819.9	64,162.0	54,599.6	380,058.3	93,225.1	105,958.5

Note : Asian Currency Unit is a separate accounting unit of banks and other financial institutions given approval to transact in the Asian Dollar Market.

Table I.12 Asian Dollar Market: Liabilities of Asian Currency Units

US \$ MILLION

END OF PERIOD	TOTAL LIABILITIES	DEPOSITS OF NON-BANK CUSTOMERS	INTERBANK FUNDS				OTHER LIABILITIES
			TOTAL	IN SINGAPORE	INTER-ASIAN CURRENCY UNITS	OUTSIDE SINGAPORE	
2004	581,562.5	150,354.2	379,900.0	34,771.1	31,457.9	313,671.1	51,308.3
2005	611,377.4	162,834.2	394,080.5	37,337.3	29,067.8	327,675.4	54,462.6
2006	698,648.5	210,936.1	415,760.0	49,139.6	42,971.6	323,648.8	71,952.3
2007	906,936.3	264,473.5	551,471.7	50,438.6	53,670.1	447,363.0	90,991.1
2008 P	912,946.4	262,221.0	523,259.2	62,734.4	54,837.8	405,687.0	127,466.2
2007 JAN	708,575.5	212,883.4	425,058.9	49,866.3	45,289.2	329,903.3	70,633.2
FEB	717,903.3	217,902.0	428,399.1	50,961.1	46,575.6	330,862.3	71,602.2
MAR	739,854.6	221,030.7	444,900.2	51,104.2	42,561.0	351,235.0	73,923.8
APR	761,818.8	220,282.3	462,717.5	55,825.6	48,050.3	358,841.6	78,819.0
MAY	761,934.2	224,065.8	452,447.0	56,653.7	46,117.1	349,676.1	85,421.5
JUN	769,984.0	228,213.3	455,436.3	51,271.3	43,010.6	361,154.4	86,334.4
JUL	788,353.3	230,951.8	467,685.0	51,326.4	43,347.4	373,011.2	89,716.4
AUG	801,939.0	240,059.1	475,159.2	49,867.7	44,929.6	380,361.9	86,720.8
SEP	845,840.0	247,559.7	503,503.5	55,916.1	49,697.3	397,890.1	94,776.8
OCT	881,780.0	264,830.5	513,474.0	52,444.7	51,401.5	409,627.9	103,475.5
NOV	893,664.7	265,308.3	526,325.1	51,269.8	49,516.9	425,538.3	102,031.4
DEC	906,936.3	264,473.5	551,471.7	50,438.6	53,670.1	447,363.0	90,991.1
2008 JAN	947,033.5	273,080.3	572,942.2	52,766.9	56,576.2	463,599.1	101,011.1
FEB	981,554.1	279,264.2	595,271.4	54,075.2	57,452.5	483,743.7	107,018.6
MAR	993,748.4	273,004.7	611,427.0	57,957.0	50,560.6	502,909.4	109,316.6
APR	976,131.0	271,571.2	604,337.2	55,948.6	55,512.7	492,875.9	100,222.6
MAY	963,504.0	269,579.4	593,949.3	57,776.2	54,263.3	481,909.8	99,975.3
JUN	964,408.5	267,117.1	591,689.2	59,638.8	48,879.0	483,171.4	105,602.3
JUL	972,672.5	269,159.5	603,962.1	56,706.5	52,882.1	494,373.5	99,550.9
AUG	960,919.4	267,728.5	587,301.1	60,566.9	54,729.4	472,004.8	105,889.7
SEP	968,992.0	264,185.2	586,781.8	56,248.3	50,104.6	480,428.9	118,025.0
OCT	969,625.8	256,045.2	577,459.4	60,037.6	50,312.3	467,109.4	136,121.3
NOV	925,147.5	250,479.8	536,219.3	59,558.9	52,251.2	424,409.3	138,448.4
DEC P	912,946.4	262,221.0	523,259.2	62,734.4	54,837.8	405,687.0	127,466.2

Note : Asian Currency Unit is a separate accounting unit of banks and other financial institutions given approval to transact in the Asian Dollar Market.

**Table I.13 Asian Dollar Market: Maturities of Assets and Liabilities of Asian Currency Units**

US \$ MILLION

END OF PERIOD	ASSETS				TOTAL ASSETS/ LIABILITIES	LIABILITIES			
	UP TO 6 MONTHS	OVER 6 MONTHS TO 1 YEAR	OVER 1 TO 3 YEARS	OVER 3 YEARS		UP TO 6 MONTHS	OVER 6 MONTHS TO 1 YEAR	OVER 1 TO 3 YEARS	OVER 3 YEARS
	1	2	3	4		5*	6	7	8
2004	415,471.7	43,474.9	40,584.6	48,688.8	581,562.5	489,620.2	23,424.1	13,388.9	19,858.5
2005	427,465.1	48,531.8	41,377.7	59,880.3	611,377.4	517,003.1	21,243.3	15,745.8	22,101.6
2006	479,234.1	44,375.4	50,617.9	87,179.4	698,648.5	583,664.9	25,278.6	21,549.2	25,562.0
2007	603,264.0	55,268.7	71,671.2	117,613.2	906,936.3	765,923.7	28,286.4	24,852.5	33,820.4
2008 P	571,823.9	52,101.1	79,981.6	117,152.1	912,946.4	739,909.5	30,459.7	29,968.4	33,979.6
2007 I	508,607.0	47,036.8	53,599.5	90,936.2	739,854.6	622,157.0	26,941.2	22,918.5	26,913.1
II	520,430.3	42,420.5	64,161.1	100,077.5	769,984.0	641,129.9	26,365.0	25,074.3	30,439.7
III	570,026.7	47,869.4	65,011.0	108,603.6	845,840.0	707,758.6	25,924.3	28,189.1	33,075.3
IV	603,264.0	55,268.7	71,671.2	117,613.2	906,936.3	765,923.7	28,286.4	24,852.5	33,820.4
2008 I	649,780.3 r	58,328.4	82,869.3	119,635.3	993,748.4 r	834,365.8 r	32,451.2	25,886.9	26,554.0
II	629,740.3	53,606.3	81,597.1	121,750.4	964,408.5	807,740.8	29,309.9	29,872.1	32,334.8
III	636,632.6	51,943.8	82,633.8	116,805.1	968,992.0	802,956.6	35,215.6	29,047.4	31,986.9
IV P	571,823.9	52,101.1	79,981.6	117,152.1	912,946.4	739,909.5	30,459.7	29,968.4	33,979.6

Note : Asian Currency Unit is a separate accounting unit of banks and other financial institutions given approval to transact in the Asian Dollar Market.  
 Column 5 Data exclude those with unallocated periods. Therefore, the sum of the maturity categories may not add up to the total.

Table I.14 Asian Dollar Market: Interbank and Non-bank Funds by Selected Regions

US \$ MILLION

END OF PERIOD	EAST ASIA 1/					EUROPE				
	DEPOSITS FROM NON-BANK CUSTOMERS	AMOUNTS DUE TO BANKS	AMOUNTS DUE FROM BANKS	LOANS & ADVANCES (INCL BILLS) TO NON-BANK CUSTOMERS	DEBT SECURITIES AND EQUITIES	DEPOSITS FROM NON-BANK CUSTOMERS	AMOUNTS DUE TO BANKS	AMOUNTS DUE FROM BANKS	LOANS & ADVANCES (INCL BILLS) TO NON-BANK CUSTOMERS	DEBT SECURITIES AND EQUITIES
	1	2	3	4	5	6	7	8	9	10
2004	66,418.1	183,156.6	133,487.0	32,105.4	20,110.5	5,394.5	96,922.3	134,053.0	7,373.5	17,851.0
2005	67,121.1	183,397.7	141,316.9	39,214.3	19,228.6	7,455.4	106,058.2	134,823.3	8,238.7	17,504.2
2006	82,155.6	190,938.8	129,716.9	35,615.0	23,219.0	13,925.6	101,705.8	163,725.9	12,710.8	20,972.6
2007	101,192.4	265,165.7	157,106.6	46,335.1	37,514.8	13,255.8	142,798.9	195,861.9	14,824.3	26,898.5
2008 P	84,850.0	223,629.2	159,690.7	51,654.2	24,658.3	22,075.3	155,054.0	161,461.0	15,421.1	20,909.9
2007 JAN	79,864.2	193,818.9	132,251.4	36,038.8	24,813.1	13,754.5	104,111.6	159,363.1	12,596.8	22,421.4
FEB	80,680.0	200,160.1	135,995.5	36,783.1	25,909.1	14,599.2	98,835.0	156,416.8	12,928.0	23,042.2
MAR	81,567.3	209,733.0	148,705.4	37,841.8	25,534.9	10,906.5	105,843.5	160,401.0	10,610.9	23,243.2
APR	82,011.9	225,600.0	137,858.9	37,825.9	28,769.1	11,714.2	100,148.9	171,353.0	10,419.6	23,876.4
MAY	85,599.4	210,202.5	134,641.2	37,901.1	33,081.3	12,433.8	109,235.9	166,448.7	12,790.8	24,076.8
JUN	83,718.7	220,126.1	142,272.8	39,407.2	30,720.0	11,795.6	109,524.4	165,947.4	12,691.2	24,151.4
JUL	86,106.1	231,938.3	143,444.5	40,848.4	31,396.5	11,953.1	111,863.5	166,823.2	12,053.0	25,270.0
AUG	86,394.5	227,380.8	155,500.3	39,903.4	27,671.0	12,873.9	117,616.9	170,100.5	14,097.1	25,002.0
SEP	89,737.0	238,348.3	154,644.5	42,422.6	32,754.8	14,067.3	125,156.2	186,219.0	14,957.9	26,399.8
OCT	99,397.1	248,540.5	147,345.1	43,339.5	35,647.9	12,385.1	127,244.6	198,658.0	14,462.5	26,501.5
NOV	100,790.2	258,731.7	149,642.4	46,130.4	36,101.6	12,754.5	133,929.1	198,180.5	14,649.7	26,733.6
DEC	101,192.4	265,165.7	157,106.6	46,335.1	37,514.8	13,255.8	142,798.9	195,861.9	14,824.3	26,898.5
2008 JAN	102,530.3	283,763.4	151,329.3	47,680.7	42,687.1	12,916.5	146,743.7	208,461.0	14,941.7	26,948.5
FEB	102,602.5	290,930.5	160,127.9	48,051.0	49,195.0	13,596.0	152,998.9	210,308.6	14,937.1	26,434.0
MAR	100,794.9	291,851.1	169,898.5	49,557.1	49,798.1	13,780.1	168,705.5	196,023.1	16,739.1	26,563.4
APR	96,950.4	278,891.0	167,436.2	50,621.0	53,652.1	12,826.8	169,261.2	190,484.2	15,992.1	26,617.4
MAY	96,123.5	268,385.0	156,968.0	53,660.2	49,626.4	13,151.9	171,286.7	195,027.8	16,828.5	26,607.5
JUN	94,717.0	267,427.0	163,862.9	55,652.7	47,094.1	12,948.9	174,422.4	177,997.2	17,082.9	26,083.3
JUL	94,471.0	268,769.7	173,947.2	56,435.2	45,970.8	13,628.2	180,617.5	185,402.3	17,980.6	25,824.5
AUG	93,420.9	252,859.9	170,449.6	57,326.7	39,877.7	13,134.6	179,005.1	171,899.3	17,660.6	25,429.7
SEP	92,948.9	264,987.1	174,539.8	57,463.7	34,663.6	12,925.5	180,651.4	181,338.8	18,844.5	23,039.1
OCT	88,576.7	257,657.2	177,169.8	54,516.2	27,475.2	13,263.8	175,208.3	178,867.1	16,758.2	20,221.6
NOV	82,336.7	232,456.5	160,343.2	52,316.9	23,819.9	11,678.9	158,746.8	161,140.3	15,598.0	20,805.2
DEC P	84,850.0	223,629.2	159,690.7	51,654.2	24,658.3	22,075.3	155,054.0	161,461.0	15,421.1	20,909.9

Notes : Asian Currency Unit is a separate accounting unit of banks and other financial institutions given approval to transact in the Asian Dollar Market.  
The revised country groupings for Europe and The Americas include key country exposures only.

1/ Consists of China, Hong Kong, Japan, South Korea, Taiwan and ASEAN (excluding Singapore).



Table I.14 Asian Dollar Market: Interbank and Non-bank Funds by Selected Regions (continued)

US \$ MILLION

END OF PERIOD	THE AMERICAS					OTHERS				
	DEPOSITS FROM NON-BANK CUSTOMERS	AMOUNTS DUE TO BANKS	AMOUNTS DUE FROM BANKS	LOANS & ADVANCES (INCL BILLS) TO NON-BANK CUSTOMERS	DEBT SECURITIES AND EQUITIES	DEPOSITS FROM NON-BANK CUSTOMERS	AMOUNTS DUE TO BANKS	AMOUNTS DUE FROM BANKS	LOANS & ADVANCES (INCL BILLS) TO NON-BANK CUSTOMERS	DEBT SECURITIES AND EQUITIES
	11	12	13	14	15	16	17	18	19	20
2004	24,015.0	7,617.3	25,758.2	13,225.4	20,385.7	11,541.0	25,974.9	16,643.6	14,210.1	11,453.5
2005	27,767.2	8,243.0	23,340.5	26,566.7	20,971.2	14,876.6	29,976.6	20,136.1	18,068.6	12,809.6
2006	38,226.0	4,799.6	28,346.2	26,387.4	23,188.6	19,407.8	26,204.6	17,196.3	24,834.5	17,637.1
2007	52,764.9	9,010.9	33,889.7	37,356.5	28,365.2	24,245.6	30,387.5	25,807.4	41,147.3	29,161.3
2008 P	51,890.6	8,676.6	30,965.2	35,045.4	22,829.8	24,003.5	18,327.2	27,941.4	51,277.5	21,115.7
2007 JAN	38,545.6	5,618.8	31,670.9	26,711.0	24,641.8	20,520.2	26,354.0	16,781.3	25,828.0	18,131.6
FEB	40,465.0	4,834.0	29,268.3	27,455.8	25,003.5	20,850.7	27,033.3	16,699.9	26,169.8	18,496.3
MAR	40,792.9	7,333.4	30,950.1	28,743.0	25,495.5	21,222.0	28,325.0	20,342.5	27,936.8	19,050.7
APR	41,903.1	5,675.7	32,976.9	28,002.8	26,156.9	21,065.0	27,417.0	20,398.5	29,777.9	19,972.6
MAY	43,630.9	6,192.7	32,896.2	29,861.3	26,312.9	21,499.4	24,045.0	16,062.4	30,459.8	20,186.8
JUN	44,130.7	5,213.5	31,463.9	30,324.2	25,871.2	22,303.6	26,290.4	18,007.9	32,056.0	21,311.7
JUL	44,963.2	4,906.5	31,117.7	31,255.4	25,983.7	22,281.4	24,302.9	20,154.9	32,813.1	22,157.0
AUG	47,107.5	5,892.2	28,391.7	31,982.3	25,449.6	22,182.4	29,472.0	19,851.3	33,817.6	21,948.9
SEP	48,516.3	3,448.2	28,410.9	33,429.8	26,371.0	22,401.6	30,937.4	19,903.5	34,921.3	24,628.6
OCT	52,415.5	3,369.7	29,333.6	35,805.9	27,709.0	22,899.5	30,473.1	24,504.6	36,070.8	28,362.5
NOV	51,364.4	4,255.6	31,279.6	36,804.0	27,374.7	24,079.8	28,622.0	24,013.7	38,934.6	29,014.9
DEC	52,764.9	9,010.9	33,889.7	37,356.5	28,365.2	24,245.6	30,387.5	25,807.4	41,147.3	29,161.3
2008 JAN	53,441.2	4,292.6	32,761.0	37,372.1	27,853.2	25,506.8	28,799.4	26,172.6	43,273.6	30,833.0
FEB	53,875.3	6,988.2	32,822.1	36,743.7	27,248.5	26,463.3	32,826.1	26,737.4	44,657.4	32,384.5
MAR	54,228.2	8,932.5	35,517.5	37,806.3	27,971.1	26,506.9	33,420.3	30,239.1	48,954.5	30,163.5
APR	54,471.0	14,286.0	32,714.4	38,131.0	27,878.9	25,292.5	30,437.8	27,297.0	49,848.5	29,703.8
MAY	54,983.7	10,523.2	30,322.0	39,143.4	27,742.5	25,531.2	31,714.9	23,500.0	50,700.9	28,612.1
JUN	53,707.5	11,232.3	29,956.2	41,829.0	27,258.5	25,669.0	30,089.7	26,395.8	52,004.4	27,094.3
JUL	54,853.2	14,916.3	28,376.4	42,324.9	26,943.6	25,836.4	30,069.9	23,558.4	53,519.9	27,174.4
AUG	53,935.3	13,434.3	27,102.4	42,346.3	26,439.2	25,170.6	26,705.5	21,532.8	52,610.0	25,699.7
SEP	53,559.4	10,134.5	24,051.8	41,368.0	24,571.4	24,875.4	24,655.9	24,577.8	52,914.7	24,758.1
OCT	51,870.4	8,172.6	26,604.2	37,808.1	23,887.5	22,781.6	26,071.3	27,580.1	51,157.4	21,009.3
NOV	51,152.3	9,530.6	27,892.1	35,644.2	22,959.7	22,819.1	23,675.4	29,269.7	51,432.0	20,223.3
DEC P	51,890.6	8,676.6	30,965.2	35,045.4	22,829.8	24,003.5	18,327.2	27,941.4	51,277.5	21,115.7

Table I.15 Credit and Charge Card Statistics

\$\$ MILLION

PERIOD	NUMBER OF CARDS		TOTAL CARD BILLINGS	ROLLOVER BALANCE	BAD DEBTS WRITTEN OFF	CHARGE-OFF RATES (%)
	MAIN	SUPPLEMENTARY				
	1*	2*				
		3	4*	5	6*	
2004	2,985,973	946,784	14,046.5	2,640.8	195.9	7.6
2005	3,415,507	1,026,516	16,073.1	2,842.1	137.1	5.0
2006	3,968,044	1,121,932	18,639.9	2,822.4	118.6	4.4
2007	4,472,262	1,173,988	22,639.6	3,015.7	108.9	3.8
2008 P	5,056,582	1,221,333	25,662.2	3,420.7	115.4	3.6
2007 JAN	4,023,097	1,128,124	1,702.4	2,775.9	8.8	-
FEB	4,038,599	1,130,207	1,546.6	2,853.3	9.2	-
MAR	4,089,996	1,123,472	1,805.8	2,731.1	8.8	3.9
APR	4,139,647	1,128,686	1,677.5	2,814.0	9.9	-
MAY	4,172,371	1,134,208	1,858.1	2,789.0	9.4	-
JUN	4,234,135	1,138,408	2,007.1	2,868.3	9.0	4.1
JUL	4,288,041	1,144,809	1,829.4	2,792.3	8.0	-
AUG	4,303,391	1,147,368	1,824.0	2,814.5	9.1	-
SEP	4,340,938	1,150,044	1,883.1	2,984.9	9.1	3.7
OCT	4,446,542	1,171,119	2,080.7	2,851.2	9.1	-
NOV	4,481,052	1,194,327	2,096.3	2,984.6	9.2	-
DEC	4,472,262	1,173,988	2,328.9	3,015.7	9.3	3.8
2008 JAN	4,543,665	1,182,389	2,082.8	3,004.7	7.5	-
FEB	4,577,874	1,184,930	1,891.0	3,136.3	8.3	-
MAR	4,596,543	1,189,794	2,105.9	3,071.7	8.9	3.3
APR	4,660,391	1,191,491	2,036.2	3,079.5	8.4	-
MAY	4,678,714	1,194,746	2,210.3	3,116.5	9.1	-
JUN	4,729,374	1,198,818	2,211.1	3,224.1	9.4	3.5
JUL	4,798,265	1,206,388	2,143.3	3,158.1	9.0	-
AUG	4,877,963	1,214,339	2,077.6	3,281.1	9.9	-
SEP	4,948,030	1,218,699	2,181.9	3,318.8	10.8	3.7
OCT	4,984,279	1,206,245	2,159.4	3,320.2	11.2	-
NOV	5,026,776	1,214,573	2,124.0	3,517.3	10.6	-
DEC P	5,056,582	1,221,333	2,438.7	3,420.7	12.3	4.0

Columns 1, 2 & 4 Refer to end of period.

Column 6 Charge-off rate for the year is defined as the bad debts written off during the year divided by the average rollover balance for the same year. As monthly charge-off rates tend to be too volatile, we have chosen to publish quarterly charge-off rates instead. However, there can still be seasonal variations. The quarterly charge-off rate is calculated by annualising the ratio obtained from dividing the bad debts written off for the quarter by the average rollover balance for the same quarter.

Table II.1 Finance Companies: Assets and Liabilities

\$\$ MILLION

END OF PERIOD	ASSETS						LIABILITIES						
	TOTAL ASSETS/ LIABILITIES	CASH AND BALANCES WITH MAS	DEPOSITS WITH BANKS AND OTHER INSTITUTIONS	SECURITIES AND EQUITIES	LOANS AND ADVANCES	OTHER ASSETS	CAPITAL AND RESERVES	DEPOSITS			OTHER CREDITORS	OTHER LIABILITIES	
								TOTAL	FIXED	SAVINGS			OTHERS
1	2	3	4	5	6	7	8=9+10+11	9	10	11	12	13	
2004	8,308.5	168.5	460.7	709.4	6,878.9	90.9	1,442.8	5,667.6	5,514.1	145.8	7.7	321.3	876.8
2005	9,444.9	195.4	455.1	827.3	7,869.7	97.4	1,658.4	6,365.5	6,240.4	121.6	3.5	685.4	735.7
2006	10,066.6	211.7	757.1	1,008.0	7,972.2	117.6	1,693.1	7,150.3	7,035.3	108.9	6.0	603.7	619.5
2007	12,781.8	283.1	881.7	1,277.7	10,179.7	159.7	1,734.7	10,087.2	9,939.5	140.0	7.7	256.9	703.0
2008 P	12,586.4	285.1	988.5	1,456.9	9,743.1	112.7	1,766.2	9,975.7	9,799.7	162.4	13.6	134.9	709.7
2007 JAN	10,446.7	214.6	992.9	1,089.2	8,021.2	128.8	1,703.7	7,501.2	7,376.0	112.2	13.0	602.4	639.4
FEB	10,707.8	216.4	1,049.8	1,114.4	8,188.9	138.3	1,713.8	7,761.9	7,630.6	115.7	15.5	599.0	633.1
MAR	10,751.8	223.1	982.3	1,055.0	8,380.0	111.3	1,728.3	7,906.0	7,779.1	117.4	9.4	518.2	599.3
APR	10,809.2	228.1	962.4	1,068.1	8,439.3	111.2	1,663.3	8,032.4	7,901.6	122.0	8.8	425.6	687.9
MAY	10,631.0	230.2	561.9	1,072.6	8,628.2	138.2	1,672.9	8,043.2	7,901.8	126.9	14.5	273.4	641.5
JUN	11,125.0	237.9	817.6	1,093.7	8,777.8	198.0	1,701.2	8,487.8	8,342.2	127.5	18.2	270.6	665.3
JUL	11,414.8	241.8	520.8	1,154.9	8,945.7	551.5	1,710.1	8,771.1	8,628.0	130.0	13.0	269.4	664.1
AUG	11,565.3	260.8	570.9	1,201.2	9,423.2	109.2	1,702.7	8,896.8	8,751.4	134.3	11.2	266.1	699.6
SEP	11,802.9	264.5	576.6	1,237.4	9,603.6	120.7	1,726.7	9,127.9	8,984.8	135.5	7.6	265.1	683.2
OCT	12,053.2	269.5	495.1	1,249.5	9,935.2	103.9	1,750.2	9,361.1	9,211.5	139.6	10.0	261.2	680.8
NOV	12,563.7	279.1	763.5	1,265.2	10,118.9	137.1	1,716.7	9,820.4	9,667.2	138.7	14.5	260.5	766.1
DEC	12,781.8	283.1	881.7	1,277.7	10,179.7	159.7	1,734.7	10,087.2	9,939.5	140.0	7.7	256.9	703.0
2008 JAN	12,935.5	289.1	860.0	1,292.6	10,390.0	103.7	1,746.2	10,237.1	10,082.2	143.9	10.9	255.3	696.9
FEB	12,711.9	293.9	727.4	1,284.9	10,299.0	106.6	1,757.1	10,150.1	9,989.1	150.0	11.1	145.3	659.3
MAR	12,883.4	292.9	869.7	1,344.6	10,273.5	102.7	1,773.7	10,312.5	10,148.8	152.7	11.0	133.6	663.6
APR	12,852.3	292.1	909.6	1,300.8	10,241.7	108.1	1,745.2	10,255.6	10,089.8	155.3	10.6	131.9	719.6
MAY	12,712.9	289.8	805.9	1,312.2	10,188.1	116.9	1,753.0	10,166.7	9,998.4	156.6	11.6	129.4	663.8
JUN	12,614.1	291.1	660.2	1,412.4	10,133.0	117.3	1,696.9	10,057.7	9,891.4	158.6	7.6	126.5	733.1
JUL	12,765.0	289.2	937.6	1,320.4	10,086.8	131.1	1,713.8	10,148.7	9,978.5	161.5	8.6	144.6	757.9
AUG	12,799.7	288.6	1,089.2	1,321.4	9,986.2	114.4	1,704.7	10,239.2	10,069.5	162.4	7.3	119.0	736.8
SEP	12,686.1	286.2	988.8	1,372.6	9,934.2	104.3	1,720.1	10,124.9	9,951.1	164.2	9.6	125.9	715.1
OCT	12,795.5	286.7	1,157.8	1,374.3	9,868.5	108.2	1,732.9	10,211.5	10,040.6	157.9	12.9	145.3	705.9
NOV	12,816.1	284.8	1,132.7	1,426.8	9,860.6	111.3	1,739.5	10,205.1	10,034.4	158.4	12.2	143.2	728.4
DEC P	12,586.4	285.1	988.5	1,456.9	9,743.1	112.7	1,766.2	9,975.7	9,799.7	162.4	13.6	134.9	709.7

Table II.2 Finance Companies: Loans and Advances

\$\$ MILLION

END OF PERIOD	LOANS AND ADVANCES							
	TOTAL	HOUSING LOANS	HIRE PURCHASE FINANCE				LEASE FINANCE	OTHER LOANS AND ADVANCES
			TOTAL	MOTOR VEHICLES	CONSUMER DURABLES	OTHERS		
1=2+3+7+8	2	3=4+5+6	4	5	6	7	8*	
2004	6,878.9	952.4	2,364.8	2,193.4	0.3	171.1	0.0	3,561.7
2005	7,869.7	1,583.3	2,467.6	2,265.3	0.3	202.0	0.0	3,818.7
2006	7,972.2	1,681.3	2,245.8	2,064.8	0.2	180.8	0.0	4,045.1
2007	10,179.7	1,767.1	2,713.1	2,509.1	0.1	203.9	0.0	5,699.4
2008 P	9,743.1	1,587.6	2,755.6	2,485.5	0.2	269.8	0.0	5,399.9
2007 JAN	8,021.2	1,659.2	2,252.9	2,074.2	0.2	178.5	0.0	4,109.1
FEB	8,188.9	1,652.1	2,249.6	2,073.0	0.5	176.2	0.0	4,287.1
MAR	8,380.0	1,662.5	2,257.8	2,074.7	0.1	182.9	0.0	4,459.7
APR	8,439.3	1,685.8	2,257.3	2,075.0	0.1	182.1	0.0	4,496.2
MAY	8,628.2	1,693.0	2,278.3	2,097.8	0.1	180.4	0.0	4,656.9
JUN	8,777.8	1,690.1	2,313.4	2,129.7	0.1	183.6	0.0	4,774.3
JUL	8,945.7	1,716.1	2,339.4	2,152.6	0.1	186.7	0.0	4,890.2
AUG	9,423.2	1,701.5	2,769.8	2,579.5	0.1	190.2	0.0	4,951.9
SEP	9,603.6	1,720.7	2,759.5	2,566.9	0.1	192.5	0.0	5,123.5
OCT	9,935.2	1,773.8	2,761.9	2,560.3	0.1	201.5	0.0	5,399.5
NOV	10,118.9	1,785.3	2,745.2	2,540.6	0.1	204.5	0.0	5,588.3
DEC	10,179.7	1,767.1	2,713.1	2,509.1	0.1	203.9	0.0	5,699.4
2008 JAN	10,390.0	1,760.4	2,724.2	2,505.8	0.1	218.3	0.0	5,905.5
FEB	10,299.0	1,753.8	2,694.5	2,472.1	0.1	222.3	0.0	5,850.7
MAR	10,273.5	1,741.8	2,660.9	2,437.9	0.1	222.9	0.0	5,870.8
APR	10,241.7	1,707.7	2,645.8	2,418.2	0.1	227.6	0.0	5,888.2
MAY	10,188.1	1,701.8	2,631.7	2,403.8	0.1	227.8	0.0	5,854.7
JUN	10,133.0	1,686.6	2,631.0	2,391.7	0.1	239.2	0.0	5,815.4
JUL	10,086.8	1,654.6	2,657.4	2,406.6	0.1	250.8	0.0	5,774.8
AUG	9,986.2	1,630.8	2,689.8	2,433.7	0.1	256.1	0.0	5,665.5
SEP	9,934.2	1,640.8	2,720.4	2,460.1	0.1	260.3	0.0	5,573.0
OCT	9,868.5	1,617.7	2,730.1	2,463.5	0.2	266.5	0.0	5,520.7
NOV	9,860.6	1,603.7	2,741.3	2,469.0	0.2	272.1	0.0	5,515.5
DEC P	9,743.1	1,587.6	2,755.6	2,485.5	0.2	269.8	0.0	5,399.9

Column 8 Includes block discounting.

Table II.3 Merchant Banks: Assets and Liabilities of Domestic and Asian Currency Unit Operations

S\$ MILLION

END OF PERIOD	ASSETS							LIABILITIES					
	TOTAL ASSETS/ LIABILITIES	AMOUNTS DUE FROM BANKS			LOANS AND ADVANCES TO NON-BANK CUSTOMERS	SECURITIES AND EQUITIES	OTHER ASSETS	CAPITAL AND RESERVES	AMOUNTS DUE TO BANKS			BORROWINGS FROM NON-BANK CUSTOMERS	OTHER LIABI- LITIES
		TOTAL	IN SINGAPORE	OUTSIDE SINGAPORE					TOTAL	IN SINGAPORE	OUTSIDE SINGAPORE		
		1	2=3+4	3					4*	5	6		
2004	59,244.8	25,718.7	1,394.9	24,323.8	18,693.0	11,991.1	2,842.0	7,636.0	27,320.4	1,225.9	26,094.5	20,406.1	3,882.4
2005	64,845.1	24,548.3	665.3	23,883.0	26,675.0	11,209.1	2,412.7	8,374.1	29,471.5	904.5	28,567.1	23,036.8	3,962.7
2006	78,029.3	32,683.2	771.4	31,911.8	27,562.0	15,650.2	2,133.9	8,104.5	35,834.0	1,635.2	34,198.8	28,859.0	5,231.8
2007	89,025.5	36,217.1	634.8	35,582.3	28,157.1	21,072.0	3,579.3	9,121.3	36,477.7	1,462.9	35,014.8	36,904.2	6,522.3
2008 P	72,910.9	32,059.5	1,296.7	30,762.9	21,775.5	13,448.9	5,627.0	8,430.4	35,740.6	530.7	35,209.9	22,785.0	5,954.9
2007 JAN	81,029.6	33,632.7	732.5	32,900.1	28,151.9	16,788.1	2,456.9	8,251.1	36,671.2	1,590.8	35,080.3	29,408.5	6,698.9
FEB	82,249.6	35,215.5	784.3	34,431.2	27,504.3	16,321.2	3,208.6	8,303.7	37,337.6	1,746.1	35,591.5	29,874.9	6,733.4
MAR	78,465.9	35,711.2	775.2	34,936.0	23,184.6	16,658.2	2,911.8	8,387.0	32,558.5	1,700.0	30,858.5	30,488.5	7,031.9
APR	82,058.8	36,348.5	669.5	35,679.0	23,438.8	18,856.4	3,415.0	8,403.2	34,759.4	1,617.3	33,142.1	31,694.5	7,201.6
MAY	86,701.3	37,605.1	648.7	36,956.5	23,402.5	21,595.0	4,098.6	8,598.2	36,566.3	1,740.9	34,825.4	32,339.0	9,197.8
JUN	85,350.8	38,860.4	647.1	38,213.3	24,345.4	19,372.3	2,772.7	8,820.3	35,466.0	1,750.0	33,716.0	33,183.0	7,881.4
JUL	84,951.1	38,827.8	546.4	38,281.4	24,074.3	18,380.8	3,668.1	8,883.6	35,110.2	1,820.1	33,290.2	32,488.8	8,468.4
AUG	82,555.0	36,923.1	573.6	36,349.5	24,913.7	16,989.6	3,728.6	8,919.3	33,026.5	1,821.6	31,204.9	33,921.7	6,687.5
SEP	86,260.3	35,754.0	596.2	35,157.8	26,067.5	20,647.0	3,791.7	8,951.2	36,415.4	1,957.9	34,457.4	35,028.2	5,865.5
OCT	88,160.6	34,333.4	609.5	33,723.9	26,445.5	23,341.5	4,040.2	8,899.8	36,906.4	1,996.0	34,910.3	34,687.1	7,667.3
NOV	89,676.2	36,186.8	647.7	35,539.1	28,048.8	20,992.4	4,448.1	8,887.7	36,298.5	1,526.3	34,772.2	35,624.3	8,865.7
DEC	89,025.5	36,217.1	634.8	35,582.3	28,157.1	21,072.0	3,579.3	9,121.3	36,477.7	1,462.9	35,014.8	36,904.2	6,522.3
2008 JAN	93,011.1	36,956.5	702.9	36,253.6	28,649.0	20,700.7	6,705.0	9,812.3	36,457.5	1,209.3	35,248.2	36,946.3	9,795.0
FEB	83,669.9	34,858.1	760.3	34,097.7	20,140.6	23,667.0	5,004.2	8,530.3	38,615.6	740.7	37,874.9	28,764.0	7,760.0
MAR	79,568.4	31,266.4	640.3	30,626.1	23,050.3	21,032.0	4,219.7	8,565.6	36,736.2	752.4	35,983.9	27,856.9	6,409.7
APR	78,890.6	32,946.9	632.9	32,314.0	20,806.7	20,678.2	4,458.8	8,532.6	35,786.7	709.6	35,077.1	27,817.2	6,754.1
MAY	76,420.7	34,369.3	844.6	33,524.7	20,582.7	17,451.6	4,017.1	8,447.0	34,287.7	681.9	33,605.8	27,979.8	5,706.2
JUN	72,267.0	30,002.7	969.0	29,033.7	19,910.1	17,117.9	5,236.4	8,479.3	33,574.6	613.7	32,960.9	23,744.6	6,468.5
JUL	75,863.4	30,534.2	1,057.5	29,476.7	20,400.4	20,470.9	4,457.9	8,556.6	37,052.4	616.3	36,436.1	23,602.0	6,652.4
AUG	76,728.8	31,559.6	876.4	30,683.2	21,562.1	19,366.6	4,240.5	8,761.1	37,653.4	673.9	36,979.5	24,165.0	6,149.3
SEP	76,658.8	29,671.2	843.3	28,827.9	24,272.8	17,032.4	5,682.4	8,692.7	37,799.7	623.8	37,175.9	23,582.0	6,584.4
OCT	77,257.1	31,974.2	795.1	31,179.2	23,245.6	12,727.4	9,309.9	8,796.9	38,025.2	716.8	37,308.4	23,096.8	7,338.1
NOV	76,791.8	32,578.9	1,305.9	31,273.0	22,863.6	12,715.6	8,633.7	9,355.5	37,739.1	582.0	37,157.1	23,126.2	6,571.1
DEC P	72,910.9	32,059.5	1,296.7	30,762.9	21,775.5	13,448.9	5,627.0	8,430.4	35,740.6	530.7	35,209.9	22,785.0	5,954.9

Note : Provision of corporate financial advisory services, underwriting and operations in the gold market would not be reflected in the data.

Columns 4 & 11 Includes Asian Currency Units.

Table II.4 Merchant Banks: Assets and Liabilities of Domestic Unit Operations

\$\$ MILLION

END OF PERIOD	ASSETS							LIABILITIES					
	TOTAL ASSETS/ LIABILITIES	AMOUNTS DUE FROM BANKS			LOANS AND ADVANCES TO NON-BANK CUSTOMERS	SECURITIES AND EQUITIES	OTHER ASSETS	CAPITAL AND RESERVES	AMOUNTS DUE TO BANKS			BORROWINGS FROM NON-BANK CUSTOMERS	OTHER LIABILITIES
		TOTAL	IN SINGAPORE	OUTSIDE SINGAPORE					TOTAL	IN SINGAPORE	OUTSIDE SINGAPORE		
		1	2=3+4	3					4	5	6		
2004	6,731.0	4,970.6	1,393.0	3,577.6	688.4	745.1	326.9	3,529.3	2,301.8	831.0	1,470.8	435.8	464.0
2005	6,157.3	4,034.7	664.2	3,370.5	685.2	1,137.6	299.8	2,613.4	2,842.4	904.5	1,937.9	237.8	463.7
2006	7,379.6	4,403.2	770.6	3,632.6	715.1	1,864.0	397.2	2,133.6	4,236.7	1,635.2	2,601.5	365.5	643.8
2007	8,312.0	4,361.7	633.9	3,727.8	1,138.5	1,641.2	1,170.7	2,781.0	3,884.0	1,448.5	2,435.5	521.9	1,125.2
2008 P	8,833.9	5,313.8	1,261.8	4,052.0	791.7	1,221.1	1,507.3	3,258.3	3,686.6	527.9	3,158.7	340.9	1,548.2
2007 JAN	7,640.9	4,564.4	731.8	3,832.6	749.5	1,945.1	381.9	2,288.2	4,409.4	1,590.8	2,818.6	338.3	605.0
FEB	7,845.0	4,572.3	783.7	3,788.6	808.7	2,062.8	401.3	2,321.0	4,572.3	1,745.4	2,827.0	343.1	608.6
MAR	7,841.7	4,631.0	774.6	3,856.3	840.5	1,928.8	441.5	2,319.4	4,514.9	1,700.0	2,814.9	359.9	647.6
APR	9,079.7	5,273.5	668.8	4,604.6	826.4	1,843.2	1,136.6	2,800.4	4,529.5	1,617.3	2,912.2	383.8	1,365.9
MAY	9,830.1	5,204.3	648.0	4,556.3	794.3	2,368.8	1,462.7	2,787.7	4,660.5	1,740.9	2,919.5	409.8	1,972.1
JUN	8,811.0	5,464.6	646.6	4,818.0	914.3	1,942.4	489.8	2,928.8	4,817.8	1,750.0	3,067.8	457.0	607.4
JUL	8,991.6	5,189.4	545.9	4,643.5	920.4	1,989.7	892.1	2,884.3	4,465.9	1,820.1	2,645.8	500.8	1,140.6
AUG	8,759.7	4,745.0	573.0	4,172.1	935.4	2,577.1	502.3	2,796.3	4,049.3	1,821.6	2,227.7	482.6	1,431.5
SEP	8,422.2	4,869.0	595.5	4,273.5	967.4	2,016.4	569.5	2,718.2	4,146.8	1,957.9	2,188.9	484.0	1,073.2
OCT	8,410.3	4,890.2	608.7	4,281.5	1,019.1	1,873.1	627.9	2,654.8	4,205.2	1,981.5	2,223.7	489.0	1,061.3
NOV	8,284.7	4,629.7	646.9	3,982.8	1,107.1	1,748.3	799.7	2,620.2	3,896.8	1,511.8	2,385.0	526.9	1,240.8
DEC	8,312.0	4,361.7	633.9	3,727.8	1,138.5	1,641.2	1,170.7	2,781.0	3,884.0	1,448.5	2,435.5	521.9	1,125.2
2008 JAN	10,188.6	5,307.9	702.0	4,605.8	1,227.1	1,481.2	2,172.4	3,724.7	3,385.9	1,195.1	2,190.8	572.3	2,505.7
FEB	9,205.3	4,952.2	759.9	4,192.3	1,070.3	1,115.7	2,067.0	3,436.1	2,982.7	726.8	2,255.9	496.1	2,290.4
MAR	7,882.4	4,883.4	639.8	4,243.5	1,102.3	1,103.2	793.6	3,451.9	2,948.6	738.6	2,210.0	498.3	983.5
APR	7,778.4	4,697.7	612.0	4,085.7	1,178.0	1,065.2	837.5	3,371.6	2,963.2	696.0	2,267.2	452.6	990.9
MAY	7,857.7	4,978.2	844.2	4,134.0	1,130.7	880.7	868.0	3,399.6	3,022.5	668.2	2,354.3	526.1	909.4
JUN	7,817.0	5,147.7	968.6	4,179.1	1,117.0	725.9	826.4	3,458.9	3,005.8	600.0	2,405.7	506.6	845.7
JUL	7,770.7	5,296.2	1,056.9	4,239.3	1,034.9	730.6	709.0	3,399.1	2,994.9	602.3	2,392.7	452.8	923.9
AUG	7,715.4	5,160.2	875.9	4,284.3	1,060.7	736.6	757.9	3,304.6	3,104.2	659.8	2,444.4	464.3	842.3
SEP	7,690.4	5,034.2	842.2	4,192.0	1,084.2	764.2	807.9	3,227.1	3,141.6	609.5	2,532.1	410.9	910.8
OCT	8,105.4	5,198.3	794.5	4,403.9	804.5	755.9	1,346.7	3,141.8	3,387.8	713.8	2,673.9	384.7	1,191.0
NOV	8,470.0	5,733.9	1,288.0	4,445.9	826.0	863.5	1,046.5	3,500.4	3,388.6	579.0	2,809.6	330.3	1,250.7
DEC P	8,833.9	5,313.8	1,261.8	4,052.0	791.7	1,221.1	1,507.3	3,258.3	3,686.6	527.9	3,158.7	340.9	1,548.2

Table II.5 Insurance Companies: Assets

S\$ MILLION

END OF PERIOD	SINGAPORE OPERATIONS		SINGAPORE LIFE INSURANCE FUND					
	TOTAL	SINGAPORE INSURANCE FUND	TOTAL	CASH AND DEPOSITS	DEBT SECURITIES	EQUITIES SECURITIES	LOANS	OTHER ASSETS
	1	2*=3+9	3=4 TO 8	4	5*	6	7	8
2004	83,486.6	77,332.3	71,813.7	5,148.3	14,427.2	44,715.0	3,686.2	3,837.0
2005	95,348.0	89,752.8	83,552.5	4,533.1	44,974.8	26,492.4	3,377.5	4,174.7
2006	105,908.8	99,672.4	92,866.7	5,021.0	47,325.0	32,467.7	3,399.3	4,653.7
2007	122,948.6	115,224.8	108,067.3	4,412.7	54,202.2	39,854.1	3,638.3	5,960.0
2008 P	108,557.4	99,694.1	92,293.4	6,139.3	50,832.8	24,588.1	3,974.7	6,758.5
2007 I	112,601.3	105,159.0	97,923.3	6,605.2	49,274.1	33,674.6	3,334.3	5,035.1
II	119,091.0	111,471.9	104,372.7	5,021.7	52,954.6	37,761.4	3,547.8	5,087.2
III	122,525.8	114,874.0	107,678.3	5,713.6	53,240.0	40,073.9	3,588.8	5,062.0
IV	122,948.6	115,224.8	108,067.3	4,412.7	54,202.2	39,854.1	3,638.3	5,960.0
2008 I	117,694.2	109,867.6	102,426.2	5,071.6	51,427.7	35,334.9	3,683.0	6,909.0
II	117,260.9	109,169.1	101,814.8	5,159.2	50,273.8	35,304.9	3,902.8	7,174.1
III	113,971.7	105,393.7	97,991.8	6,250.2	50,639.6	30,150.1	3,838.3	7,113.6
IV P	108,557.4	99,694.1	92,293.4	6,139.3	50,832.8	24,588.1	3,974.7	6,758.5

Note: With effect from 2005, data exclude that of captive insurers.

Column 2 Refers to the Singapore Life Insurance Fund (column 3) and the Singapore General Insurance Fund (column 9).

Column 5 Prior to 2005, data refer to government securities.

Table II.5 Insurance Companies: Assets (continued)

S\$ MILLION

END OF PERIOD	SINGAPORE GENERAL INSURANCE FUND					
	TOTAL	CASH AND DEPOSITS	DEBT SECURITIES	EQUITIES SECURITIES	LOANS	OTHER ASSETS
	9=10 TO 14	10	11*	12	13	14
2004	5,518.6	1,615.2	1,661.8	1,558.6	71.8	611.2
2005	6,200.3	1,671.3	2,984.8	843.2	67.1	633.9
2006	6,805.7	2,029.4	3,090.3	865.4	70.2	750.4
2007	7,157.5	1,997.8	3,663.2	649.5	36.1	810.9
2008 P	7,400.7	2,292.4	3,743.5	410.2	43.5	911.1
2007 I	7,235.7	2,330.4	3,156.2	912.7	66.7	769.7
II	7,099.2	2,174.6	3,427.5	679.6	66.4	751.1
III	7,195.7	2,082.2	3,515.0	680.5	38.6	879.4
IV	7,157.5	1,997.8	3,663.2	649.5	36.1	810.9
2008 I	7,441.4	2,090.6	3,788.6	568.3	35.8	958.1
II	7,354.3	2,086.3	3,691.1	577.0	41.6	958.3
III	7,401.9	2,125.8	3,766.9	526.8	48.1	934.3
IV P	7,400.7	2,292.4	3,743.5	410.2	43.5	911.1

Column 11 Prior to 2005, data refer to government securities.



Table II.6 General Insurance Companies: Premiums and Claims

S\$ MILLION

PERIOD	PREMIUMS							
	SINGAPORE OPERATIONS				SINGAPORE INSURANCE FUND			
	GROSS	REINSURANCE BUSINESS CEDED IN SINGAPORE	REINSURANCE BUSINESS CEDED OUTSIDE SINGAPORE	NET	GROSS	REINSURANCE BUSINESS CEDED IN SINGAPORE	REINSURANCE BUSINESS CEDED OUTSIDE SINGAPORE	NET
	1	2	3	4	5	6	7	8
2005	4,632.2	384.4	927.2	3,542.5	2,345.0	310.9	484.8	1,771.5
2006	4,749.9	406.2	899.5	3,662.0	2,388.4	330.0	438.9	1,837.3
2007	5,401.8	403.6	959.2	4,277.0	2,647.3	323.1	483.0	2,079.4
2008 P	6,072.4	436.8	1,080.0	4,791.8	3,004.9	342.6	531.2	2,367.0
2007 I	1,414.8	115.2	245.1	1,117.3	716.9	98.4	129.6	551.7
II	1,404.2	114.8	249.0	1,107.0	695.9	95.1	119.8	547.6
III	1,288.7	79.3	232.6	1,036.4	603.6	62.3	110.1	490.8
IV	1,294.1	94.3	232.5	1,016.3	630.9	67.3	123.5	489.3
2008 I	1,584.8	114.6	250.4	1,289.6	804.4	96.8	143.1	634.2
II	1,613.4	110.6	274.7	1,286.4	739.9	87.7	114.3	596.2
III	1,486.5	107.5	266.2	1,168.9	748.3	79.2	123.9	601.2
IV P	1,387.7	104.1	288.7	1,046.9	712.3	78.9	149.9	535.4

Notes : Singapore operations refer to the companies' total operations in Singapore including that of the Singapore Insurance Fund. With effect from 2005, data exclude that of captive insurers.

Table II.6 General Insurance Companies: Premiums and Claims (continued)

S\$ MILLION

PERIOD	CLAIMS							
	SINGAPORE OPERATIONS				SINGAPORE INSURANCE FUND			
	GROSS	RECOVERIES FROM REINSURANCE BUSINESS CEDED IN SINGAPORE	RECOVERIES FROM REINSURANCE BUSINESS CEDED OUTSIDE SINGAPORE	NET	GROSS	RECOVERIES FROM REINSURANCE BUSINESS CEDED IN SINGAPORE	RECOVERIES FROM REINSURANCE BUSINESS CEDED OUTSIDE SINGAPORE	NET
	9	10	11	12	13	14	15	16
2005	2,167.9	147.5	411.4	1,685.7	896.3	121.6	98.0	753.2
2006	2,003.9	152.3	255.6	1,681.0	997.8	105.4	117.6	860.1
2007	2,128.3	135.8	246.4	1,845.5	1,150.9	112.1	137.7	1,000.5
2008 P	2,500.2	239.7	272.5	2,072.4	1,357.1	215.0	113.8	1,112.6
2007 I	509.5	32.0	71.4	425.7	273.8	29.1	37.4	227.0
II	514.0	22.9	41.6	469.8	264.0	15.5	21.9	246.9
III	566.3	39.3	59.0	486.9	311.9	32.5	35.5	262.7
IV	538.5	41.6	74.4	463.1	301.2	35.0	42.9	263.9
2008 I	667.2	138.0	70.7	479.4	406.9	133.5	29.9	264.4
II	535.3	35.7	45.8	478.1	297.8	31.1	21.6	269.4
III	617.1	21.1	66.4	550.7	304.6	16.6	23.3	285.7
IV P	680.6	44.9	89.6	564.2	347.8	33.8	39.0	293.1

Table II.7 Life Insurance Companies: New Business

PERIOD	INDIVIDUAL POLICIES				GROUP POLICIES			
	NO. OF POLICIES	SUMS INSURED	PREMIUMS		NO. OF POLICIES	NO. OF LIVES INSURED	SUMS INSURED	PREMIUMS
			SINGLE	OTHER				
	1	2	3	4	5	6	7	8
2004	700,077	29,404.8	6,076.7	479.1	4,994	782,674	17,828.2	70.8
2005	2,736,127	110,089.2	5,353.4	788.0	5,728	877,975	21,430.2	96.4
2006	886,745	41,360.7	6,891.0	647.4	5,659	745,876	18,614.3	94.4
2007	1,041,206	45,020.4	8,869.4	834.9	5,866	812,760	27,826.6	132.8
2008 P	1,070,457	45,233.3	7,628.9	1,014.2	24,167	3,132,707	46,889.7	187.5
2007 I	223,032	9,684.5	1,741.6	159.7	1,522	229,733	7,346.0	32.8
II	241,619	10,911.2	2,565.2	183.5	1,476	187,783	5,808.5	33.4
III	257,526	11,057.9	1,953.6	220.5	1,489	199,574	4,917.5	33.7
IV	319,029	13,366.8	2,609.0	271.2	1,379	195,670	9,754.6	32.9
2008 I	293,099	11,793.3	2,741.6	240.9	10,646	434,333	8,896.7	46.0
II	266,734	12,204.0	2,229.8	269.1	5,429	271,128	7,392.3	46.1
III	254,863	11,584.8	1,846.6	280.3	4,155	511,159	20,478.1	60.6
IV P	255,761	9,651.2	810.9	223.9	3,937	1,916,087	10,122.6	34.8

Note: Individual and Group Annuities are not included.

Table II.8 Life Insurance Companies: Business In Force

END OF PERIOD	INDIVIDUAL POLICIES			GROUP POLICIES			
	NO. OF POLICIES	SUMS INSURED	PREMIUMS	NO. OF POLICIES	NO. OF LIVES INSURED	SUMS INSURED	PREMIUMS
		\$ \$ MILLION				\$ \$ MILLION	
	1	2	3	4	5	6	7
2004	6,901,529	262,830.4	5,580.1	19,017	2,915,581	68,434.4	277.9
2005	9,203,519	353,577.9	6,034.1	22,586	3,219,599	77,455.3	343.5
2006	9,503,008	370,883.1	6,345.0	23,888	3,463,560	86,377.6	364.8
2007	9,906,782	391,545.5	6,741.5	26,955	3,531,897	100,806.2	426.3
2008 P	10,381,725	411,552.1	7,215.6	45,941	4,105,714	123,347.4	519.1
2007 I	9,561,966	374,137.6	6,409.4	24,622	3,476,882	89,252.8	382.3
II	9,643,295	379,237.4	6,441.1	25,321	3,502,125	91,893.9	400.6
III	9,745,305	384,682.0	6,573.2	26,227	3,496,067	93,977.9	413.2
IV	9,906,782	391,545.5	6,741.5	26,955	3,531,897	100,806.2	426.3
2008 I	10,047,013	396,130.5	6,841.4	36,595	3,719,763	104,225.0	447.4
II	10,189,035	402,912.1	6,974.3	40,733	3,889,813	102,581.5	466.6
III	10,294,710	408,750.8	7,158.3	43,199	4,011,843	116,309.2	498.3
IV P	10,381,725	411,552.1	7,215.6	45,941	4,105,714	123,347.4	519.1

Note: Individual and Group Annuities are not included.

Table III.1A Exchange Rates

PERIOD	S\$ PER UNIT OF			S\$ PER 100 UNITS OF						
	US DOLLAR	POUND STERLING	EURO	SWISS FRANC	JAPANESE YEN	MALAYSIAN RINGGIT	HONG KONG DOLLAR	AUSTRALIAN DOLLAR	CHINESE RENMINBI	INDIAN RUPEE
	1	2	3	4	5	6	7	8	9	10
	END OF PERIOD									
2004	1.6338	3.1455	2.2243	144.10	1.5916	42.99	21.02	127.23	19.74	-
2005	1.6642	2.8717	1.9754	126.91	1.4189	44.03	21.46	122.07	20.63	-
2006	1.5336	3.0102	2.0176	125.56	1.2887	43.43	19.73	121.32	19.64	3.4713
2007	1.4412	2.8798	2.1252	128.32	1.2871	43.59	18.47	127.07	19.73	3.6597
2008	1.4392	2.0769	2.0258	135.91	1.5924	41.55	18.57	99.59	21.09	2.9694
2008 JUL	1.3676	2.7094	2.1318	130.66	1.2664	41.92	17.53	129.16	20.01	3.2179
AUG	1.4160	2.5933	2.0876	129.32	1.2978	41.75	18.14	122.38	20.71	3.2362
SEP	1.4314	2.5775	2.0558	130.71	1.3732	41.40	18.43	114.45	20.91	3.1030
OCT	1.4807	2.4249	1.9017	129.95	1.5029	41.56	19.10	99.80	21.65	2.9940
NOV	1.5072	2.3202	1.9441	125.55	1.5818	41.66	19.45	98.83	22.06	3.0286
DEC	1.4392	2.0769	2.0258	135.91	1.5924	41.55	18.57	99.59	21.09	2.9694
2008 JUL 4	1.3609	2.7004	2.1389	132.69	1.2754	41.65	17.45	130.80	19.84	3.1466
11	1.3602	2.6913	2.1483	132.44	1.2713	41.90	17.43	130.69	19.90	3.1636
18	1.3529	2.7028	2.1439	132.49	1.2717	41.70	17.35	131.46	19.84	3.1688
25	1.3611	2.7031	2.1354	131.48	1.2724	41.83	17.45	130.33	19.95	3.2155
AUG 1	1.3695	2.7152	2.1323	130.58	1.2718	41.99	17.55	128.29	20.02	3.2220
8	1.3986	2.6992	2.1281	130.77	1.2745	42.43	17.91	124.99	20.38	3.3130
15	1.4139	2.6373	2.0892	128.90	1.2842	42.31	18.10	122.37	20.59	3.3120
22	1.4061	2.6357	2.0904	129.06	1.2902	42.09	18.01	123.31	20.59	3.2361
29	1.4160	2.5933	2.0876	129.32	1.2978	41.75	18.14	122.38	20.71	3.2362
SEP 5	1.4364	2.5252	2.0510	129.34	1.3453	41.54	18.40	117.37	21.00	3.2304
12	1.4380	2.5289	2.0133	126.58	1.3429	41.59	18.44	115.41	21.01	3.1463
19	1.4348	2.5902	2.0390	128.43	1.3409	41.44	18.43	116.61	20.99	3.0966
26	1.4222	2.6220	2.0867	131.20	1.3437	41.43	18.28	118.85	20.82	3.0757
OCT 3	1.4484	2.5609	2.0052	127.94	1.3781	41.67	18.64	112.83	21.16	3.0729
10	1.4823	2.5134	2.0084	132.02	1.4999	42.21	19.09	98.17	21.70	3.0231
17	1.4787	2.5629	1.9906	130.01	1.4558	41.95	19.06	102.59	21.64	3.0398
24	1.5035	2.4155	1.9206	128.59	1.5642	42.03	19.39	98.39	21.98	3.0106
31	1.4807	2.4249	1.9017	129.95	1.5029	41.56	19.10	99.80	21.65	2.9940
NOV 7	1.4935	2.3420	1.9032	126.87	1.5338	42.02	19.27	99.66	21.88	3.1327
14	1.5113	2.2532	1.9323	127.50	1.5556	42.08	19.50	99.73	22.13	3.0733
21	1.5327	2.2624	1.9107	124.94	1.6240	42.24	19.78	94.74	22.42	3.0417
28	1.5072	2.3202	1.9441	125.55	1.5818	41.66	19.45	98.83	22.06	3.0286
DEC 5	1.5238	2.2371	1.9456	127.06	1.6468	41.89	19.66	98.33	22.15	3.0617
12	1.4898	2.2462	1.9941	126.46	1.6429	41.97	19.22	98.79	21.77	3.0547
19	1.4478	2.1949	2.0677	134.39	1.6232	41.75	18.68	100.04	21.18	3.0719
26	1.4433	2.1322	2.0275	134.01	1.5953	41.48	18.62	98.68	21.11	3.0176

Notes : US\$ rates are the average of buying and selling interbank rates at noon. Rates for foreign currencies other than US\$ are cross rates derived from the rates of such foreign currencies against the US\$ and the US\$/S\$ rates. Rates in columns 1 to 10 are as at the end of the year or month or for the date indicated.

Table III.1A Exchange Rates (continued)

PERIOD	S\$ PER UNIT OF			S\$ PER 100 UNITS OF						
	US DOLLAR	POUND STERLING	EURO	SWISS FRANC	JAPANESE YEN	MALAYSIAN RINGGIT	HONG KONG DOLLAR	AUSTRALIAN DOLLAR	CHINESE RENMINBI	INDIAN RUPEE
	11	12	13	14	15	16	17	18	19	20
2004	1.6903	3.0963	2.1008	136.09	1.5634	44.48	21.70	124.43	20.42	-
2005	1.6646	3.0290	2.0719	133.83	1.5138	43.95	21.40	126.86	20.33	-
2006	1.5889	2.9261	1.9952	126.84	1.3667	43.31	20.45	119.67	19.93	3.5089
2007	1.5071	3.0161	2.0638	125.63	1.2806	43.84	19.32	126.24	19.81	3.6482
2008	1.4148	2.6162	2.0771	130.90	1.3738	42.47	18.17	120.16	20.37	3.2669
2008 JUL	1.3588	2.7028	2.1431	132.41	1.2732	41.81	17.42	130.80	19.87	3.1712
AUG	1.4029	2.6550	2.1029	129.71	1.2838	42.16	17.97	123.94	20.47	3.2656
SEP	1.4287	2.5717	2.0564	129.01	1.3403	41.53	18.34	117.20	20.90	3.1425
OCT	1.4763	2.5066	1.9678	129.38	1.4731	41.90	19.02	102.05	21.60	3.0400
NOV	1.5067	2.3099	1.9166	126.65	1.5551	42.00	19.44	98.74	22.06	3.0765
DEC	1.4778	2.2079	1.9972	129.84	1.6198	41.65	19.07	99.14	21.56	3.0371
2008 JUL 4	1.3607	2.7087	2.1482	133.45	1.2811	41.64	17.45	130.72	19.84	3.1508
11	1.3619	2.6915	2.1394	132.34	1.2717	41.86	17.46	130.36	19.88	3.1561
18	1.3511	2.6988	2.1469	133.02	1.2792	41.84	17.32	131.58	19.80	3.1475
25	1.3570	2.7070	2.1433	132.00	1.2679	41.84	17.40	131.29	19.88	3.1982
AUG 1	1.3661	2.7126	2.1369	131.13	1.2678	41.88	17.51	129.59	19.99	3.2140
8	1.3806	2.6974	2.1334	130.81	1.2703	42.11	17.69	126.49	20.14	3.2721
15	1.4092	2.6659	2.0990	129.60	1.2850	42.35	18.04	123.02	20.53	3.3180
22	1.4110	2.6359	2.0844	129.02	1.2867	42.28	18.07	123.14	20.59	3.2433
29	1.4173	2.6088	2.0889	129.24	1.2955	41.94	18.15	122.23	20.72	3.2375
SEP 5	1.4301	2.5477	2.0736	129.33	1.3233	41.69	18.32	119.71	20.91	3.2292
12	1.4323	2.5263	2.0218	126.73	1.3312	41.51	18.36	115.84	20.94	3.1813
19	1.4338	2.5823	2.0463	128.85	1.3599	41.51	18.41	114.99	20.97	3.0942
26	1.4178	2.6210	2.0807	130.53	1.3399	41.45	18.24	118.54	20.77	3.0922
OCT 3	1.4369	2.5749	2.0361	129.21	1.3633	41.58	18.49	114.94	20.99	3.0837
10	1.4674	2.5506	1.9965	129.45	1.4457	41.97	18.89	103.88	21.47	3.0566
17	1.4729	2.5524	1.9951	129.68	1.4603	41.94	18.98	101.10	21.56	3.0402
24	1.4913	2.4821	1.9456	129.03	1.5024	42.04	19.23	100.84	21.82	3.0221
31	1.4894	2.4010	1.9056	130.15	1.5390	41.71	19.21	96.82	21.78	3.0150
NOV 7	1.4816	2.3541	1.8957	126.94	1.5026	41.90	19.12	100.17	21.69	3.0843
14	1.5023	2.3058	1.9057	127.07	1.5405	41.98	19.38	99.70	22.00	3.1125
21	1.5278	2.2731	1.9182	126.49	1.5895	42.30	19.71	97.62	22.37	3.0649
28	1.5153	2.3065	1.9469	126.10	1.5878	41.84	19.54	97.47	22.19	3.0443
DEC 5	1.5253	2.2758	1.9373	126.47	1.6300	41.94	19.68	98.44	22.18	3.0487
12	1.4993	2.2325	1.9591	125.26	1.6279	41.69	19.34	99.03	21.86	3.0632
19	1.4584	2.2353	2.0406	130.45	1.6315	41.43	18.82	100.03	21.32	3.0669
26	1.4482	2.1472	2.0276	132.92	1.6035	41.62	18.69	98.70	21.15	3.0067

Notes : Rates in columns 11 to 20 are averages for the year or month or the week ending on the dates indicated.

Table III.1B Daily Exchange Rates and Forward Swap Points for US\$/S\$

PERIOD	EXCHANGE RATES										US\$/S\$ FORWARD SWAP POINTS		
	S\$ PER UNIT OF			S\$ PER 100 UNITS OF							1-MONTH	3-MONTH	6-MONTH
	US DOLLAR	POUND STERLING	EURO	SWISS FRANCO	JAPANESE YEN	MALAYSIAN RINGGIT	HONG KONG DOLLAR	AUSTRALIAN DOLLAR	CHINESE RMB	INDIAN RUPEE			
	1	2	3	4	5	6	7	8	9	10	11*	12*	13*
2008 DEC													
1	1.5225	2.3329	1.9284	125.65	1.5978	41.96	19.64	98.67	22.21	3.0383	-11.00	-52.43	-112.71
2	1.5283	2.2766	1.9289	126.78	1.6348	41.99	19.72	97.72	22.19	3.0245	-9.47	-48.00	-110.50
3	1.5272	2.2792	1.9453	126.67	1.6346	41.96	19.70	98.76	22.18	3.0642	-8.42	-46.00	-101.43
4	1.5247	2.2530	1.9384	126.19	1.6360	41.93	19.67	98.69	22.15	3.0546	-8.31	-40.25	-93.75
5	1.5238	2.2371	1.9456	127.06	1.6468	41.89	19.66	98.33	22.15	3.0617	-7.93	-37.71	-80.57
9	1.5111	2.2417	1.9451	124.74	1.6293	41.63	19.50	99.49	21.98	3.0748	-8.00	-39.21	-88.00
10	1.5019	2.2194	1.9459	124.79	1.6229	41.52	19.38	99.62	21.88	3.0523	-3.91	-29.81	-62.44
11	1.4944	2.2226	1.9512	125.03	1.6164	41.66	19.28	98.21	21.80	3.0708	-3.97	-27.25	-56.25
12	1.4898	2.2462	1.9941	126.46	1.6429	41.97	19.22	98.79	21.77	3.0547	-3.50	-29.00	-63.17
15	1.4784	2.2217	1.9913	126.23	1.6256	41.46	19.08	98.98	21.60	3.0778	-0.57	-14.88	-45.25
16	1.4713	2.2527	2.0174	127.26	1.6248	41.39	18.98	98.43	21.49	3.0764	-0.05	-15.14	-42.88
17	1.4579	2.2764	2.0537	130.32	1.6430	41.28	18.81	101.47	21.32	3.0754	-1.00	-7.44	-24.75
18	1.4368	2.2306	2.0730	134.05	1.6412	41.25	18.54	101.22	21.02	3.0331	-2.26	-5.63	-22.75
19	1.4478	2.1949	2.0677	134.39	1.6232	41.75	18.68	100.04	21.18	3.0719	-3.72	-4.31	-20.38
22	1.4520	2.1632	2.0295	131.62	1.6107	41.72	18.73	98.87	21.21	3.0652	-5.97	-1.00	-14.25
23	1.4499	2.1528	2.0323	132.86	1.6074	41.61	18.71	99.22	21.16	2.9966	-9.09	-5.13	-2.38
24	1.4476	2.1406	2.0211	133.21	1.6005	41.66	18.68	98.05	21.13	2.9474	-9.00	-3.00	-6.75
26	1.4433	2.1322	2.0275	134.01	1.5953	41.48	18.62	98.68	21.11	3.0176	-8.38	-2.00	-7.56
29	1.4421	2.1192	2.0417	136.24	1.5916	41.44	18.61	99.07	21.07	2.9842	-9.19	-2.00	-6.00
30	1.4434	2.0955	2.0372	137.14	1.5990	41.45	18.62	99.94	21.08	2.9683	-7.14		-12.43
31	1.4392	2.0769	2.0258	135.91	1.5924	41.55	18.57	99.59	21.09	2.9694	-4.06	-1.63	-12.75

Notes : US\$ rates are the average of buying and selling interbank rates at noon. Rates for foreign currencies other than US\$ are cross rates derived from the rates of such foreign currencies against the US\$ and the US\$/S\$ rates.

Columns 11-13 Source: The Association of Banks in Singapore (ABS) - Reuters is the official and exclusive calculating agent of the ABS fixing rates.

'-' = discount. These forward swap points are the average of buying and selling of the fixing rates.

To derive the forward rate for the US\$, the forward premium/discount should be added/subtracted from the US\$/S\$ spot exchange rate.

Table III.2 Foreign Exchange Market Turnover

PERIOD	IN MILLIONS OF S\$		IN MILLIONS OF US\$	
	TOTAL TURNOVER	DAILY AVERAGE	TOTAL TURNOVER	DAILY AVERAGE
	1	2	3	4
2004	66,143,928	261,438	39,181,134	154,866
2005	70,851,920	283,408	42,520,769	170,083
2006	74,970,624	299,882	47,377,937	189,512
2007	98,360,532	393,442	65,524,378	262,098
2008 P	102,288,319	405,906	72,728,833	288,606
2007 I	22,234,820	364,505	14,561,228	238,709
II	24,506,948	395,273	16,049,245	258,859
III	27,087,554	423,243	17,945,999	280,406
IV	24,531,210	389,384	16,967,906	269,332
2008 I	25,917,717	424,881	18,551,807	304,128
II	25,837,281	410,116	18,958,590	300,930
III	28,927,645	438,298	20,581,243	311,837
IV P	21,605,676	348,479	14,637,193	236,084
2007 JAN	6,606,643	314,602	4,298,681	204,699
FEB	6,606,902	367,050	4,316,544	239,808
MAR	9,021,275	410,058	5,946,003	270,273
APR	7,707,437	385,372	5,071,350	253,567
MAY	8,195,550	390,264	5,363,931	255,425
JUN	8,603,961	409,712	5,613,964	267,332
JUL	8,990,972	408,681	5,947,590	270,345
AUG	10,060,101	457,277	6,608,054	300,366
SEP	8,036,481	401,824	5,390,355	269,518
OCT	8,794,574	382,373	6,068,571	263,851
NOV	8,962,156	426,769	6,198,752	295,179
DEC	6,774,480	356,552	4,700,583	247,399
2008 JAN	9,084,392	412,927	6,404,676	291,122
FEB	7,660,916	403,206	5,499,976	289,472
MAR	9,172,409	458,620	6,647,155	332,358
APR	9,004,435	409,293	6,611,671	300,531
MAY	8,300,369	415,018	6,080,411	304,021
JUN	8,532,477	406,308	6,266,508	298,405
JUL	9,268,425	402,975	6,777,146	294,659
AUG	9,191,559	437,693	6,491,214	309,105
SEP	10,467,661	475,803	7,312,883	332,404
OCT	9,351,828	445,325	6,315,816	300,753
NOV	6,155,616	307,781	4,084,140	204,207
DEC P	6,098,232	290,392	4,237,237	201,773



Table III.3 Domestic Interest Rates

END OF PERIOD	PER CENT PER ANNUM				
	INTERBANK			3-MONTH	3-MONTH
	OVERNIGHT	1-MONTH	3-MONTH	COMMERCIAL BILLS	US\$ SIBOR
	1	2	3	4	6
2004	1.63	1.38	1.44	1.40	2.56
2005	3.25	3.19	3.25	3.21	4.54
2006	0.50	3.44	3.44	3.43	5.36
2007	1.25	2.00	2.38	2.34	4.73
2008	0.13	0.75	1.00	1.00	1.44
2008 JUL					
AUG	0.31	0.88	1.00	1.13	2.82
AUG	0.38	1.00	1.19	1.26	2.83
SEP	1.00	1.88	1.88	1.82	3.90
OCT	0.19	1.13	1.25	1.42	3.09
NOV	0.50	0.69	0.81	1.06	2.22
DEC	0.13	0.75	1.00	1.00	1.44
2008 JUL 4	0.31	0.94	1.19	1.29	2.81
11	0.38	0.94	1.19	1.25	2.82
18	0.44	0.88	1.13	1.21	2.81
25	0.13	0.94	1.13	1.19	2.83
AUG 1	0.31	0.75	1.00	1.12	2.83
8	0.63	0.75	1.00	1.20	2.84
15	0.88	1.00	1.25	1.34	2.83
22	0.56	1.00	1.19	1.28	2.82
29	0.38	1.00	1.19	1.26	2.83
SEP 5	0.75	1.00	1.31	1.33	2.83
12	0.75	1.06	1.25	1.33	2.83
19	1.13	1.50	1.50	1.58	3.37
26	0.75	2.13	2.00	1.86	3.78
OCT 3	0.63	1.75	1.75	1.71	4.27
10	0.25	1.38	1.50	1.50	4.74
17	0.13	1.25	1.38	1.49	4.47
24	0.44	1.19	1.31	1.33	3.52
31	0.19	1.13	1.25	1.42	3.09
NOV 7	0.38	0.75	0.94	1.32	2.33
14	0.50	0.81	0.94	1.24	2.23
21	0.25	0.75	0.88	1.11	2.15
28	0.50	0.69	0.81	1.06	2.22
DEC 5	0.13	0.75	0.94	1.24	2.19
12	0.13	0.75	0.94	1.19	1.95
19	0.44	0.75	0.94	1.02	1.50
26	0.38	0.81	1.06	1.02	1.47

Notes : Interest rates at the end-period are as at the end of the year or month or at the date indicated.  
Interbank rates are the closing offer rates quoted by money brokers.

Table III.4 Interest Rates of Banks and Finance Companies

END OF PERIOD	BANKS					FINANCE COMPANIES					
	PRIME LENDING RATE	FIXED DEPOSITS			SAVINGS DEPOSITS	LOANS (EFFECTIVE RATES)		FIXED DEPOSITS			SAVINGS DEPOSITS
		3 MONTHS	6 MONTHS	12 MONTHS		HIRE PURCHASE OF NEW MOTOR VEHICLES FOR 3 YEARS	HOUSING LOANS FOR 15 YEARS	3 MONTHS	6 MONTHS	12 MONTHS	
2004	5.30	0.41	0.52	0.72	0.23	4.24	5.40	0.48	0.70	0.98	0.31
2005	5.30	0.56	0.66	0.86	0.26	4.96	5.56	0.83	1.06	1.56	0.42
2006	5.33	0.57	0.67	0.88	0.25	5.65	5.73	1.00	1.56	1.92	0.33
2007	5.33	0.51	0.62	0.83	0.25	5.65	5.73	0.70	0.99	1.50	0.33
2008	5.38	0.39	0.51	0.70	0.22	5.42	5.56	0.46	0.58	0.85	0.25
2007 JAN	5.33	0.57	0.67	0.87	0.25	5.65	5.73	1.00	1.56	1.86	0.33
FEB	5.33	0.57	0.67	0.87	0.25	5.65	5.73	1.00	1.56	1.86	0.33
MAR	5.33	0.56	0.67	0.87	0.25	5.65	5.73	0.72	1.03	1.53	0.33
APR	5.33	0.53	0.64	0.85	0.25	5.65	5.73	0.72	1.03	1.48	0.33
MAY	5.33	0.52	0.62	0.83	0.25	5.65	5.73	0.70	0.86	1.48	0.33
JUN	5.33	0.51	0.62	0.83	0.25	5.65	5.73	0.70	1.01	1.51	0.33
JUL	5.33	0.51	0.62	0.84	0.25	5.65	5.73	0.70	1.01	1.51	0.33
AUG	5.33	0.52	0.63	0.84	0.25	5.65	5.73	0.70	1.01	1.54	0.33
SEP	5.33	0.53	0.64	0.85	0.25	5.65	5.73	0.70	1.01	1.54	0.33
OCT	5.33	0.51	0.62	0.84	0.25	5.65	5.73	0.70	0.99	1.50	0.33
NOV	5.33	0.51	0.62	0.83	0.25	5.65	5.73	0.70	0.99	1.50	0.33
DEC	5.33	0.51	0.62	0.83	0.25	5.65	5.73	0.70	0.99	1.50	0.33
2008 JAN	5.38	0.48	0.59	0.79	0.25	5.42	5.73	0.52	0.67	0.98	0.33
FEB	5.38	0.46	0.55	0.74	0.24	5.42	5.73	0.50	0.59	0.95	0.25
MAR	5.38	0.42	0.52	0.71	0.24	5.42	5.56	0.50	0.59	0.95	0.25
APR	5.38	0.41	0.51	0.71	0.24	5.42	5.56	0.48	0.59	0.89	0.25
MAY	5.38	0.42	0.52	0.71	0.24	5.05	5.56	0.48	0.59	0.85	0.25
JUN	5.38	0.41	0.53	0.73	0.23	5.05	5.56	0.48	0.59	0.85	0.25
JUL	5.38	0.40	0.54	0.74	0.23	5.25	5.56	0.48	0.58	0.90	0.25
AUG	5.38	0.39	0.53	0.73	0.23	5.25	5.56	0.48	0.58	0.90	0.25
SEP	5.38	0.41	0.53	0.73	0.23	5.42	5.56	0.48	0.58	0.90	0.25
OCT	5.38	0.43	0.55	0.73	0.23	5.42	5.56	0.48	0.58	0.90	0.25
NOV	5.38	0.41	0.55	0.73	0.23	5.42	5.56	0.48	0.58	0.90	0.25
DEC	5.38	0.39	0.51	0.70	0.22	5.42	5.56	0.46	0.58	0.85	0.25

Note : Figures refer to average rates compiled from that quoted by 10 leading banks and finance companies.

**Table III.5 Singapore Government Securities (SGS): Issuance, Redemption and Outstanding Amount**

\$ MILLION

PERIOD	ISSUANCE		REDEMPTION		OUTSTANDING AS AT END OF PERIOD	
	T/BILLS	BONDS	T/BILLS	BONDS	T/BILLS	BONDS
	1	2	3	4	5	6
2004	63,000	13,900	60,000	7,750	20,200	52,000
2005	70,900	12,900	69,800	8,200	21,300	56,700
2006	81,800	8,600	77,300	5,300	25,800	60,000
2007	105,600	15,400	98,500	10,200	32,900	65,200
2008	128,800	12,100	125,800	8,600	35,900	68,700
2007 I	23,400	4,200	20,800	6,300	28,400	57,900
II	27,400	5,500	26,000	0	29,800	63,400
III	24,700	3,500	24,600	0	29,900	66,900
IV	30,100	2,200	27,100	3,900	32,900	65,200
2008 I	29,500	2,900	27,100	0	35,300	68,100
II	36,000	4,700	32,300	3,800	39,000	69,000
III	30,500	3,800	35,900	4,800	33,600	68,000
IV	32,800	700	30,500	0	35,900	68,700
2007 JAN	7,200	0	6,400	0	26,600	60,000
FEB	7,200	1,700	6,400	2,600	27,400	59,100
MAR	9,000	2,500	8,000	3,700	28,400	57,900
APR	7,500	2,900	7,200	0	28,700	60,800
MAY	10,400	1,300	9,800	0	29,300	62,100
JUN	9,500	1,300	9,000	0	29,800	63,400
JUL	7,600	0	7,500	0	29,900	63,400
AUG	9,500	1,200	9,500	0	29,900	64,600
SEP	7,600	2,300	7,600	0	29,900	66,900
OCT	11,200	2,200	10,000	3,900	31,100	65,200
NOV	10,500	0	9,500	0	32,100	65,200
DEC	8,400	0	7,600	0	32,900	65,200
2008 JAN	11,100	0	10,300	0	33,700	65,200
FEB	9,200	1,600	8,400	0	34,500	66,800
MAR	9,200	1,300	8,400	0	35,300	68,100
APR	10,100	2,500	11,600	3,800	33,800	66,800
MAY	16,100	0	11,500	0	38,400	66,800
JUN	9,800	2,200	9,200	0	39,000	69,000
JUL	11,900	1,400	12,700	4,800	38,200	65,600
AUG	9,600	1,400	10,400	0	37,400	67,000
SEP	9,000	1,000	12,800	0	33,600	68,000
OCT	10,600	700	11,900	0	32,300	68,700
NOV	12,500	0	9,600	0	35,200	68,700
DEC	9,700	0	9,000	0	35,900	68,700

Table III.6 Singapore Government Securities (SGS): Prices and Yields

PER CENT PER ANNUM  
 \$\$ PER \$100 OF PRINCIPAL AMOUNT

END OF PERIOD	OFFER OVERNIGHT REPO	AVERAGE BUYING RATES OF GOVERNMENT SECURITIES DEALERS													
		BENCHMARK ISSUES													
		3-MONTH T-BILL YIELD	1-YEAR T-BILL YIELD	2-YEAR BOND		5-YEAR BOND		7-YEAR BOND		10-YEAR BOND		15-YEAR BOND		20-YEAR BOND	
		1	2	3	4	5	6	7	8	9	10	11	12	13	14
2004	1.46	1.26	1.32	1.58	99.68	2.07	101.38	2.25	108.26	2.58	108.72	3.03	110.84	-	-
2005	3.19	2.65	2.85	2.69	99.89	3.01	106.75	3.14	102.12	3.21	103.06	3.41	98.12	-	-
2006	3.32	3.10	3.04	3.01	103.83	3.03	102.51	3.04	95.37	3.05	105.85	3.16	100.96	-	-
2007	0.98	2.00	2.00	1.82	100.95	2.33	100.75	2.55	106.41	2.68	108.26	3.18	99.39	3.27	103.29
2008	0.44	0.57	0.74	0.83	105.65	1.40	103.70	1.65	107.55	2.05	117.03	2.33	109.20	2.57	113.36
2008 JUL	0.37	0.43	0.68	1.03	106.81	2.01	98.30	2.67	101.29	3.21	106.74	3.58	94.95	3.72	97.07
AUG	0.73	0.87	1.09	1.32	105.99	2.19	97.55	2.73	100.91	3.19	106.93	3.43	96.67	3.57	99.11
SEP	1.28	1.65	1.70	1.49	105.41	2.40	99.33	2.74	100.84	3.21	106.69	3.45	96.41	3.56	99.24
OCT	0.58	0.87	1.19	1.27	105.52	2.02	101.01	2.39	102.99	2.95	108.87	3.55	95.43	3.69	97.45
NOV	0.63	0.57	0.73	0.86	105.94	1.53	103.19	1.90	106.00	2.29	114.90	2.60	106.09	2.86	109.10
DEC	0.44	0.57	0.74	0.83	105.65	1.40	103.70	1.65	107.55	2.05	117.03	2.33	109.20	2.57	113.36
2008 JUL 4	0.49	0.42	0.72	0.98	102.84	2.25	97.20	2.96	99.48	3.42	104.94	3.98	90.84	4.15	91.56
11	0.45	0.42	0.73	1.21	102.40	2.21	97.41	2.94	99.61	3.37	105.37	3.85	92.18	4.00	93.41
18	0.39	0.35	0.62	1.10	102.56	2.12	97.81	2.84	100.19	3.36	105.46	3.77	92.97	3.91	94.57
25	0.42	0.35	0.64	1.05	102.63	2.10	97.88	2.83	100.27	3.39	105.21	3.76	93.10	3.89	94.85
AUG 1	0.37	0.44	0.69	1.03	106.80	1.96	98.52	2.61	101.67	3.14	107.41	3.51	95.78	3.63	98.19
8	0.60	0.47	0.75	1.12	106.56	2.05	98.14	2.68	101.25	3.18	107.01	3.53	95.56	3.63	98.28
15	0.96	0.78	1.02	1.23	106.28	2.10	97.90	2.70	101.11	3.09	107.82	3.41	96.81	3.52	99.79
22	0.72	0.80	1.02	1.14	106.39	2.10	97.91	2.73	100.89	3.12	107.51	3.45	96.36	3.58	98.96
29	0.73	0.87	1.09	1.32	105.99	2.19	97.55	2.73	100.91	3.19	106.93	3.43	96.67	3.57	99.11
SEP 5	0.85	1.02	1.20	1.34	105.89	2.21	97.46	2.59	101.75	3.05	108.09	3.34	97.57	3.48	100.31
12	0.88	1.11	1.28	1.46	105.60	2.33	96.98	2.59	101.79	3.09	107.75	3.37	97.25	3.48	100.31
19	1.16	1.33	1.54	1.57	105.35	2.28	97.21	2.62	101.59	3.10	107.63	3.35	97.48	3.49	100.11
26	1.53	1.46	1.60	1.57	105.29	2.55	98.64	2.81	100.40	3.29	106.00	3.52	95.64	3.62	98.36
OCT 3	1.01	1.54	1.62	1.34	105.64	2.26	99.94	2.64	101.42	3.12	107.41	3.37	97.30	3.50	100.00
10	0.75	1.36	1.45	1.52	105.26	2.28	99.88	2.70	101.06	3.09	107.73	3.44	96.53	3.58	98.86
17	0.46	0.94	1.08	1.12	105.91	2.12	100.58	2.55	101.97	2.91	109.30	3.39	97.07	3.57	99.09
24	0.45	0.87	1.08	1.13	105.82	2.00	101.11	2.40	102.91	2.84	109.90	3.31	97.91	3.45	100.68
31	0.58	0.87	1.19	1.27	105.52	2.02	101.01	2.39	102.99	2.95	108.87	3.55	95.43	3.69	97.45
NOV 7	0.36	0.65	0.84	0.94	106.02	1.58	103.01	1.88	106.18	2.39	114.05	2.90	102.54	3.11	105.40
14	0.67	0.55	0.80	1.04	105.78	1.74	102.28	2.07	104.94	2.53	112.70	2.94	102.06	3.14	104.93
21	0.63	0.53	0.70	0.78	106.15	1.53	103.18	1.94	105.80	2.32	114.62	2.68	105.08	2.93	108.01
28	0.63	0.57	0.73	0.86	105.94	1.53	103.19	1.90	106.00	2.29	114.90	2.60	106.09	2.86	109.10
DEC 5	0.56	0.64	0.77	0.96	105.71	1.42	103.64	1.74	107.03	2.11	116.59	2.39	108.58	2.66	112.09
12	0.55	0.67	0.79	0.93	105.69	1.35	103.96	1.65	107.60	2.00	117.55	2.28	109.89	2.55	113.78
19	0.47	0.55	0.74	0.89	105.69	1.40	103.74	1.66	107.52	2.06	116.94	2.35	109.06	2.60	112.96
26	0.44	0.44	0.73	0.89	105.61	1.48	103.37	1.76	106.83	2.19	115.70	2.48	107.44	2.70	111.48

Notes : Figures before 2000 are the modes of closing bid prices quoted by SGS primary dealers.  
 Figures after 2000 are the average of closing bid rates quoted by SGS primary dealers.  
 Overnight repo rates are closing offer rates quoted by SGS primary dealers.

Table III.7 Singapore Government Securities (SGS): Average Daily Turnover Volume

PERIOD	OUTRIGHT PURCHASES AND SALES											REPO
	TOTAL MARKET	ORIGINAL BILL MATURITIES			ALL BONDS	BENCHMARK						REPO TRANSACTIONS TOTAL MARKET
		ALL	3-MONTH	1-YEAR		2-YEAR	5-YEAR	7-YEAR	10-YEAR	15-YEAR	20-YEAR	
		T-BILLS	T-BILL	T-BILL		BOND	BOND	BOND	BOND	BOND	BOND	
1=2+5	2=3+4	3	4	5	6	7	8	9	10	11	12	
2004	1,690	263	228	35	1,427	74	188	202	178	67	-	2,169
2005	1,669	270	238	32	1,399	88	123	145	228	103	-	2,317
2006	1,693	294	254	40	1,399	114	110	168	111	105	-	3,133
2007	2,205	457	422	35	1,748	138	139	169	148	110	141	2,704
2008	3,234	645	626	19	2,589	165	185	262	268	150	130	2,066
2008 JUL												
JUL	3,231	593	571	22	2,638	162	168	300	256	95	76	1,978
AUG	2,311	706	700	6	1,605	92	63	122	167	83	70	1,817
SEP	2,787	548	523	25	2,239	227	166	149	288	138	66	2,034
OCT	3,991	765	750	15	3,226	227	249	271	335	159	134	2,099
NOV	3,566	929	865	64	2,637	102	183	236	251	244	153	1,701
DEC	2,363	526	525	1	1,837	67	93	143	167	82	95	1,549
2008 JUL 4	3,700	626	603	23	3,074	106	223	535	345	76	112	2,315
11	3,535	449	445	4	3,086	203	231	247	313	128	65	2,079
18	3,014	515	515	0	2,499	139	163	254	176	94	99	1,875
25	2,650	640	594	46	2,010	127	84	134	245	80	74	1,788
AUG 1	3,016	585	556	29	2,431	266	125	281	268	97	44	1,758
8	2,001	684	678	6	1,317	58	75	73	198	81	61	1,568
15	2,820	678	672	6	2,142	113	77	132	161	96	74	1,889
22	2,052	853	853	0	1,199	47	58	101	112	72	60	1,690
29	2,298	730	719	11	1,568	85	29	136	156	80	81	2,179
SEP 5	2,730	410	403	7	2,320	371	86	142	410	211	54	2,173
12	1,914	478	467	11	1,436	145	89	72	92	118	54	2,006
19	3,525	696	623	73	2,829	113	215	206	308	192	113	2,095
26	2,761	661	643	18	2,100	246	247	152	316	65	39	2,115
OCT 3	3,825	788	779	9	3,037	337	442	189	283	60	74	1,676
10	3,763	606	572	34	3,157	240	236	230	450	188	113	1,911
17	4,701	778	767	11	3,923	322	193	369	318	153	107	2,686
24	3,601	546	541	5	3,055	105	176	257	337	148	161	1,694
31	3,712	1,025	1,016	9	2,687	181	229	265	269	191	190	2,181
NOV 7	4,440	1,300	1,116	184	3,140	111	315	290	303	319	152	1,967
14	3,691	888	867	21	2,803	68	145	237	269	280	171	1,773
21	3,783	826	810	16	2,957	130	183	292	266	244	125	1,536
28	2,345	700	667	33	1,645	99	90	124	168	131	165	1,531
DEC 5	3,237	630	630	0	2,607	123	142	226	255	104	113	1,611
12	2,960	549	546	3	2,411	101	88	104	213	56	60	1,609
19	2,502	537	535	2	1,965	57	115	175	149	107	152	1,214
26	1,315	708	708	0	607	20	40	50	49	58	65	2,175

Note : Figures refer to the volume of transactions computed on a per working day basis of the stated period.

**Table III.8 Singapore Exchange Securities Trading Ltd (SGX-ST): Price Index, Number of Listed Companies, Turnover and Capitalisation**

END OF PERIOD	STRAITS TIMES INDEX	SINGAPORE REGIONAL INDEX	TOTAL NUMBER OF COMPANIES LISTED	S\$ MILLION				
				TURNOVER VALUE	MARKET CAPITALISATION <sup>1/</sup>			DEBENTURES, LOAN STOCKS & WARRANTS (DBL & TSR)
					MAIN & FOREIGN BOARDS	CATALIST	TOTAL	
1*	2*	3	4*	5*	6*	7=5+6	8*	
2004	2,066.14	1,038.05	639	183,422.5	604,421.2	5,796.0	610,217.2	404,875.7
2005	2,347.34	1,130.95	664	205,164.4	422,029.1	5,876.2	427,905.3	347,969.8
2006	2,985.83	1,523.46	708	300,017.6	579,768.5	9,842.0	589,610.5	411,850.4
2007	3,482.30	1,830.84	762	604,598.5	766,025.3	10,119.5	776,144.8	479,054.0
2008	1,761.56	n.a.	767	386,557.7	381,101.0	3,562.3	384,663.3	500,390.3
2007 JAN	3,125.56	1,567.28	709	42,743.7	616,906.5	15,124.3	632,030.8	420,480.4
FEB	3,104.15	1,552.12	713	40,503.2	619,387.8	11,852.3	631,240.1	430,346.4
MAR	3,231.24	1,607.50	715	41,787.0	649,996.3	11,987.4	661,983.7	433,984.1
APR	3,361.29	1,673.41	714	45,098.4	691,497.8	14,246.2	705,744.0	436,679.2
MAY	3,511.13	1,764.20	718	46,979.0	723,873.2	14,319.7	738,192.9	462,844.4
JUN	3,548.20	1,752.14	722	55,085.5	759,674.4	13,623.4	773,297.8	474,751.1
JUL	3,547.66	1,797.10	732	66,356.2	762,422.2	13,947.4	776,369.6	475,585.1
AUG	3,392.91	1,704.34	741	59,581.0	725,049.7	10,910.5	735,960.2	480,700.2
SEP	3,706.23	1,875.04	739	47,193.9	787,339.5	11,833.4	799,172.9	480,304.1
OCT	3,805.70	1,974.36	740	71,846.8	812,425.8	11,883.1	824,308.9	480,630.9
NOV	3,521.27	1,824.16	752	52,286.9	757,870.5	10,368.8	768,239.3	487,322.5
DEC	3,482.30	1,830.84	762	35,136.9	766,025.3	10,119.5	776,144.8	479,054.0
2008 JAN	2,981.75	n.a.	765	51,244.0	655,569.3	7,628.6	663,197.9	476,165.0
FEB	3,026.45	n.a.	768	34,522.7	680,862.7	8,140.1	689,002.8	472,455.2
MAR	3,007.36	n.a.	770	37,378.4	664,618.8	7,217.5	671,836.3	473,689.7
APR	3,147.79	n.a.	770	39,979.6	687,253.3	7,360.5	694,613.8	460,450.8
MAY	3,192.62	n.a.	769	36,821.8	707,826.5	8,113.6	715,940.1	469,107.5
JUN	2,947.54	n.a.	772	31,068.6	653,363.6	7,795.4	661,159.0	514,470.0
JUL	2,929.65	n.a.	774	29,634.0	635,873.2	7,243.0	643,116.2	483,442.5
AUG	2,739.95	n.a.	776	25,949.4	590,491.6	6,464.0	596,955.6	494,996.1
SEP	2,358.91	n.a.	775	32,035.9	500,814.1	5,400.7	506,214.8	499,830.7
OCT	1,794.20	n.a.	770	30,317.5	378,936.1	3,938.5	382,874.6	514,870.3
NOV	1,732.57	n.a.	769	20,942.3	366,564.2	3,546.9	370,111.1	523,372.3
DEC	1,761.56	n.a.	767	16,663.5	381,101.0	3,562.3	384,663.3	500,390.3

1/ In May 2005, Singapore Exchange Securities Trading Limited (SGX-ST) changed its market capitalisation on computation methodology, which is stated below. For more information, please refer to SGX's website [www.sqx.com.sg](http://www.sqx.com.sg).

SGX-ST Market Capitalisation = Market Capitalisation of All Domestic Companies + Market Capitalisation of Primary-Listed Foreign Companies + Market Capitalisation of Secondary-Listed Foreign Companies which majority of trading activity takes place in SGX-ST.

Column 1 The Straits Times Index (STI) was relaunched on 10 January 2008, with the number of constituent stocks reduced to 30 from 50. There is no change to the name or numerical values of the STI.

Column 2 The BT Singapore Regional Index (SRI) is no longer calculated as of 10 January 2008.

Column 4 Data is for the period stated and includes trades done on both cash and ready basis for SGX-ST Main Board, SGX Sesdaq (renamed Catalist with effect from 17 December 2007) and Clob International.

Column 5 Includes debentures, loan stocks and warrants of companies whose ordinary shares are listed on SGX-ST.

Column 6 With effect from 17 December 2007, the SGX-ST Dealing and Automated Quotation System (SESDAQ) has been renamed Catalist.

Column 8 Refers to DBL and TSR of foreign-incorporated companies whose ordinary shares are not listed on SGX-ST.

Table III.9 Singapore Exchange Derivatives Trading Ltd (SGX-DT): Turnover and Open Interest (Futures and Options)

PERIOD	TOTAL TURNOVER			AVERAGE DAILY TURNOVER			OPEN INTEREST		
	TOTAL	FUTURES	OPTIONS	TOTAL	FUTURES	OPTIONS	TOTAL	FUTURES	OPTIONS
	FOR THE PERIOD						END OF PERIOD		
	1=2+3	2	3	4=5+6	5	6	7=8+9	8	9
2004	28,418,757	28,169,379	249,378	112,480	111,469	1,011	802,619	786,983	15,636
2005	26,026,128	25,867,661	158,467	105,148	104,499	649	882,254	854,634	27,620
2006	36,597,743	36,201,370	396,373	147,288	145,577	1,711	871,718	827,560	44,158
2007	44,206,826	43,741,573	465,253	180,995	179,108	1,887	899,867	856,225	43,642
2008	61,841,268	61,605,338	235,930	250,651	249,689	962	511,631	501,565	10,066
2007 JAN	2,921,926	2,883,827	38,099	143,081	141,244	1,837	943,893	894,747	49,146
FEB	2,719,653	2,674,169	45,484	166,935	164,560	2,375	1,088,698	1,009,706	78,992
MAR	4,178,575	4,119,990	58,585	195,546	192,773	2,773	892,073	791,478	100,595
APR	3,031,723	2,971,214	60,509	153,748	150,724	3,025	950,715	832,931	117,784
MAY	3,140,865	3,105,491	35,374	146,585	144,945	1,640	1,063,611	940,363	123,248
JUN	3,982,119	3,944,947	37,172	195,436	193,659	1,777	1,014,988	918,757	96,231
JUL	3,590,354	3,552,667	37,687	167,011	165,218	1,793	1,012,931	909,483	103,448
AUG	4,900,980	4,845,851	55,129	214,120	211,723	2,397	934,427	825,259	109,168
SEP	3,854,634	3,835,619	19,015	214,445	213,393	1,052	816,865	749,864	67,001
OCT	3,704,942	3,688,726	16,216	167,396	166,659	737	913,495	841,954	71,541
NOV	4,358,201	4,317,650	40,551	205,615	203,684	1,931	1,097,701	1,012,809	84,892
DEC	3,822,854	3,801,422	21,432	194,671	193,544	1,127	899,867	856,225	43,642
2008 JAN	5,114,989	5,053,663	61,326	247,039	243,818	3,221	1,089,944	1,036,748	53,196
FEB	4,020,538	3,998,151	22,387	220,969	219,851	1,117	1,030,069	985,786	44,283
MAR	5,696,027	5,683,079	12,948	286,306	285,659	647	936,271	909,312	26,959
APR	4,347,259	4,326,104	21,155	208,015	207,008	1,007	928,076	900,561	27,515
MAY	4,495,334	4,485,960	9,374	221,420	220,952	469	932,839	910,814	22,025
JUN	5,575,500	5,554,897	20,603	265,513	264,532	981	904,828	886,975	17,853
JUL	5,842,187	5,813,274	28,913	261,529	260,215	1,314	1,027,898	1,009,450	18,448
AUG	5,044,046	5,034,996	9,050	243,167	242,736	431	985,492	969,753	15,739
SEP	6,483,272	6,467,651	15,621	315,299	314,518	781	818,464	803,224	15,240
OCT	6,863,420	6,843,757	19,663	320,022	319,128	894	729,016	714,964	14,052
NOV	4,447,130	4,440,521	6,609	235,641	235,274	367	778,264	763,233	15,031
DEC	3,911,566	3,903,285	8,281	181,406	181,012	394	511,631	501,565	10,066

Table IV.1 Gross Domestic Product by Sector

PERIOD	YEAR-ON-YEAR % CHANGE									
	TOTAL GDP AT 2000 MARKET PRICES	MANU- FACTURING	FINANCIAL & BUSINESS SERVICES			of which				
			TOTAL	FINANCIAL SERVICES	BUSINESS SERVICES	CONSTRUCTION	WHOLESALE & RETAIL TRADE	HOTELS & RESTAURANTS	TRANSPORT & STORAGE	INFORMATION & COMMUNICATIONS
1	2	3	4	5	6	7	8	9	9	
2003	3.5	2.9	5.2	10.7	0.6	-8.9	10.6	-9.9	-0.6	5.6
2004	9.0	13.9	3.2	4.4	2.1	-5.5	17.6	11.5	10.7	6.9
2005	7.3	9.5	5.9	7.1	4.7	0.7	12.1	6.4	4.9	5.5
2006	8.2	11.9	8.7	10.6	6.9	3.6	10.4	4.8	4.7	4.6
2007	7.7	5.8	12.3	16.9	7.8	20.3	7.3	4.4	5.1	6.3
2006 III	7.4	10.2	7.1	7.9	6.4	7.7	10.4	4.6	3.9	4.0
IV	7.0	8.4	9.6	13.0	6.4	6.0	7.1	5.9	4.0	6.0
2007 I	7.0	3.9	10.9	14.5	7.4	14.4	8.0	4.8	4.4	5.9
II	9.1	8.6	12.3	17.0	7.6	22.4	8.5	5.6	5.5	6.5
III	9.5	11.0	13.7	20.1	7.5	20.1	6.8	4.9	5.0	6.6
IV	5.4	0.2	12.3	15.9	8.7	24.3	6.0	2.5	5.4	6.1
2008 I	6.9	12.7	11.4	14.0	8.6	16.9	5.5	3.1	5.4	6.8
II	2.3	-5.2	9.2	10.6	7.7	19.8	6.0	2.0	5.8	7.8
III P	-0.6	-11.4	6.7	6.0	7.3	12.8	4.3	-0.2	4.0	7.7

Source: Singapore Department of Statistics

Note: The industries are classified according to Singapore Standard Industrial Classification 2005.



Table IV.2 Gross Domestic Product by Expenditure

PERIOD	YEAR-ON-YEAR % CHANGE								
	TOTAL DEMAND AT 2000 MARKET PRICES	DOMESTIC DEMAND							EXTERNAL DEMAND
		TOTAL	CONSUMPTION		GROSS FIXED CAPITAL FORMATION				
			TOTAL	PRIVATE	PUBLIC	TOTAL	PRIVATE	PUBLIC	
1	2	3	4	5	6	7	8	9	
2003	7.5	-8.4	0.9	0.9	1.0	-3.9	-3.3	-6.3	14.0
2004	18.1	14.0	4.2	5.2	0.3	9.5	15.2	-11.1	19.5
2005	10.0	2.9	4.4	3.9	6.5	0.1	0.6	-2.4	12.2
2006	10.3	7.7	4.8	3.3	10.7	13.5	18.6	-10.9	11.0
2007	7.2	9.2	4.1	4.6	2.3	20.2	23.7	-2.2	6.6
2006 III	10.5	10.8	6.1	3.4	19.0	10.7	13.4	-5.4	10.5
IV	5.0	8.3	4.0	3.8	5.0	22.8	28.4	-9.7	4.1
2007 I	7.2	8.2	1.8	2.4	0.3	21.4	27.2	-3.2	7.0
II	6.6	10.8	5.1	5.3	3.9	27.6	31.4	-0.9	5.4
III	6.8	4.5	4.7	5.6	0.7	17.0	20.0	-3.6	7.4
IV	8.0	13.2	5.1	5.1	5.1	16.5	18.6	-0.6	6.6
2008 I	11.4	20.2	7.1	4.5	14.4	30.2	35.2	2.1	8.9
II	8.7	14.7	5.0	5.1	4.6	24.1	24.5	19.8	6.9
III P	6.4	16.6	5.8	4.7	10.2	13.1	13.2	12.6	3.7

Source: Singapore Department of Statistics

Table IV.3 Consumer Price Index

PERIOD	ALL ITEMS	FOOD	HOUSING	CLOTHING	TRANSPORT & COMM.	EDUCATION & STATIONERY	HEALTH	MISC-ELLANEOUS	ALL ITEMS	FOOD	HOUSING	CLOTHING	TRANSPORT & COMM.	EDUCATION & STATIONERY	HEALTH	MISC-ELLANEOUS
	2004 = 100								YEAR-ON-YEAR % CHANGE							
	1	2	3	4	5	6	7	8	9	10	11	12	13	14	15	16
2004	100.0	99.9	100.0	99.9	100.0	100.0	100.0	100.0	1.7	2.0	-0.1	0.1	1.2	4.2	6.0	2.3
2005	100.4	101.3	100.8	99.9	97.8	102.0	100.4	101.7	0.5	1.3	0.8	0.0	-2.2	2.0	0.4	1.7
2006	101.4	102.8	103.5	100.6	96.4	104.0	101.3	102.4	1.0	1.6	2.7	0.7	-1.5	1.9	0.9	0.7
2007	103.5	105.9	103.9	101.3	98.3	105.3	105.5	105.6	2.1	2.9	0.4	0.6	2.0	1.3	4.1	3.2
2008	110.3	114.1	117.1	102.8	101.6	108.9	111.5	109.5	6.5	7.8	12.7	1.5	3.3	3.4	5.6	3.7
2007 I	101.6	104.4	102.3	100.9	95.0	104.9	102.4	103.9	0.5	2.0	-0.3	0.2	-1.3	1.1	1.4	1.2
II	102.2	104.1	101.7	100.3	97.5	103.9	104.3	104.9	1.0	1.4	-1.4	0.2	1.1	0.2	3.0	3.1
III	104.3	106.4	104.6	101.7	99.4	106.0	107.3	105.9	2.7	3.3	0.7	1.0	2.9	1.8	5.9	4.4
IV	106.1	108.5	107.1	102.1	101.4	106.3	108.0	107.8	4.1	5.0	2.7	1.1	5.4	1.8	6.2	4.1
2008 I	108.4	111.4	111.9	103.2	102.1	108.9	109.9	108.2	6.6	6.7	9.3	2.3	7.5	3.7	7.3	4.2
II	109.8	113.4	114.5	101.5	103.4	108.9	110.8	109.3	7.5	8.9	12.5	1.2	6.0	4.8	6.2	4.2
III	111.1	115.3	118.5	103.4	102.1	109.1	112.4	109.7	6.6	8.4	13.3	1.6	2.8	2.9	4.7	3.6
IV	111.8	116.2	123.7	103.2	98.8	108.6	112.8	110.8	5.4	7.1	15.5	1.0	-2.6	2.2	4.4	2.8
2008 JAN	108.0	110.5	111.7	103.0	102.2	108.9	109.5	107.7	6.6	5.8	11.1	3.9	6.9	3.8	7.4	3.7
FEB	108.6	111.9	112.3	102.5	102.2	108.9	110.1	108.1	6.5	6.7	8.8	1.8	7.6	3.7	7.4	4.2
MAR	108.5	111.7	111.6	104.0	101.9	108.8	110.1	108.9	6.7	7.6	8.1	1.2	7.9	3.7	7.3	4.6
APR	109.8	112.6	114.8	103.7	103.0	109.0	110.7	109.9	7.5	8.5	11.8	1.0	7.0	4.9	6.7	4.5
MAY	110.0	113.5	115.3	102.0	103.6	108.9	110.7	108.9	7.5	9.0	12.4	1.2	6.0	4.8	6.1	4.2
JUN	109.7	114.2	113.3	98.8	103.5	108.7	110.9	109.2	7.5	9.2	13.4	1.5	5.1	4.7	5.8	4.0
JUL	111.0	115.1	117.9	101.8	102.9	109.5	112.0	109.2	6.5	8.5	12.5	0.7	3.4	3.3	4.5	3.5
AUG	111.2	115.3	118.5	104.2	101.9	110.1	112.6	109.7	6.4	8.4	12.8	1.7	2.0	4.0	4.8	3.6
SEP	111.2	115.7	119.0	104.3	101.5	107.6	112.6	110.3	6.7	8.2	14.6	2.6	2.8	1.3	4.8	3.7
OCT	112.3	115.9	124.1	102.3	100.8	108.7	112.7	110.8	6.4	7.8	16.4	1.2	-0.2	2.2	4.5	3.3
NOV	112.0	116.2	124.2	104.0	99.1	108.6	112.8	110.5	5.5	6.9	15.7	1.0	-1.9	2.2	4.5	2.5
DEC	111.3	116.5	122.8	103.1	96.5	108.6	112.8	111.2	4.3	6.5	14.4	0.8	-5.7	2.2	4.3	2.6

Source: Singapore Department of Statistics

Table IV.4 Other Price Indices

PERIOD	DOMESTIC SUPPLY PRICE INDEX	SINGAPORE MANUFACTURED PRODUCTS PRICE INDEX	IMPORT PRICE INDEX	EXPORT PRICE INDEX	DOMESTIC SUPPLY PRICE INDEX	SINGAPORE MANUFACTURED PRODUCTS PRICE INDEX	IMPORT PRICE INDEX	EXPORT PRICE INDEX
	2006 = 100				YEAR-ON-YEAR % CHANGE			
	1	2	3	4	5	6	7	8
2004	86.9	92.5	92.4	96.0	5.2	4.6	1.7	0.2
2005	95.2	97.7	97.2	98.0	9.6	5.7	5.2	2.1
2006	100.0	100.0	100.0	100.0	5.0	2.4	2.9	2.1
2007	100.3	98.4	98.1	96.3	0.3	-1.6	-1.9	-3.7
2008	107.8	101.8	101.1	97.5	7.5	3.4	3.0	1.3
2007 I	95.5	95.2	95.8	95.3	-4.0	-5.2	-4.4	-6.5
II	99.4	98.5	97.7	96.3	-2.3	-3.0	-3.5	-4.6
III	101.4	98.9	98.9	96.6	-0.9	-2.7	-2.3	-3.9
IV	104.7	101.1	100.1	97.1	8.6	4.9	2.9	0.5
2008 I	106.6	101.6	100.3	96.7	11.6	6.7	4.7	1.4
II	114.4	108.0	103.8	100.2	15.0	9.6	6.2	4.0
III	117.0	107.9	106.3	101.6	15.3	9.1	7.5	5.2
IV	93.4	89.9	94.0	91.7	-10.8	-11.2	-6.1	-5.5
2008 JAN	105.9	101.1	100.2	96.6	12.6	7.4	5.4	1.7
FEB	106.0	101.2	100.0	96.1	11.3	6.3	4.4	0.7
MAR	107.8	102.5	100.7	97.4	11.1	6.3	4.3	1.9
APR	109.3	103.8	101.1	97.8	11.1	6.5	4.1	1.8
MAY	114.7	108.3	103.8	100.4	15.4	9.7	6.3	4.6
JUN	119.1	111.7	106.6	102.4	18.5	12.5	8.3	5.7
JUL	121.2	111.2	108.1	103.5	19.9	12.3	9.8	7.0
AUG	117.3	107.7	106.7	101.2	16.2	9.4	8.1	5.2
SEP	112.5	104.8	104.1	100.0	10.0	5.6	4.6	3.3
OCT	102.5	96.8	98.8	95.2	-0.2	-2.7	-0.2	-0.7
NOV	91.6	88.5	93.2	91.4	-13.1	-13.2	-7.2	-6.4
DEC	86.1	84.3	89.9	88.5	-18.8	-17.4	-10.7	-9.5

Source: Singapore Department of Statistics

Table IV.5 Government Finance

PERIOD	OPERATING REVENUE							EXPENDITURE			PRIMARY SURPLUS (+)/ DEFICIT (-)	
	TOTAL	TAX REVENUE					NON-TAX REVENUE 1/	TOTAL	OPERATING	DEVELOPMENT	11=1-8	% OF GDP
		TOTAL	INCOME TAX	ASSET TAXES	STAMP DUTY	GST						
		1=2+7	2	3	4	5						
S\$ MILLION												
2003	24,643	20,736	10,414	1,243	649	2,724	3,907	27,189	19,236	7,953	-2,546	-1.6
2004	26,346	22,699	10,218	2,139	898	3,297	3,647	28,418	19,936	8,482	-2,072	-1.1
2005	28,117	25,201	12,655	1,819	813	3,815	2,915	28,781	20,675	8,107	-665	-0.3
2006	31,072	28,718	14,948	2,052	1,312	3,960	2,354	29,875	23,463	6,412	1,198	0.6
2007	39,516	36,061	16,410	2,432	4,078	5,612	3,455	31,334	24,352	6,983	8,182	3.4
2006 III	8,034	7,437	4,237	427	357	828	597	6,496	5,313	1,183	1,539	2.8
IV	7,815	7,191	3,732	448	354	1,081	623	7,520	6,003	1,517	294	0.5
2007 I	8,187	7,359	2,485	821	1,049	962	829	10,806	8,651	2,154	-2,618	-4.6
II	10,098	9,280	4,827	463	1,076	1,188	818	5,608	4,413	1,196	4,490	7.6
III	10,887	9,986	4,710	506	1,196	1,704	901	6,802	5,114	1,688	4,085	6.5
IV	10,343	9,437	4,389	642	756	1,759	907	8,119	6,174	1,945	2,225	3.5
2008 I	9,046	7,928	2,696	971	648	1,515	1,119	12,453	10,252	2,201	-3,407	-5.3
II	10,678	9,709	5,106	547	451	1,768	969	6,710	4,502	2,209	3,968	6.3
III P	11,391	10,411	5,586	598	471	1,842	980	8,447	6,693	1,754	2,945	4.6

Source: Ministry of Finance

1/ Excludes repayment of loans and advances, interest income, investment income and capital receipts.

Table IV.6 Balance of Payments

S\$ MILLION

PERIOD	CURRENT ACCOUNT BALANCE					CAPITAL & FINANCIAL ACCOUNT BALANCE						ERRORS & OMISSIONS	OVERALL BALANCE	OFFICIAL FOREIGN RESERVES (END OF PERIOD)
	TOTAL	GOODS BALANCE	SERVICES BALANCE	INCOME BALANCE	CURRENT TRANSFER (NET)	TOTAL	CAPITAL ACCOUNT (NET)	FINANCIAL ACCOUNT (NET)						
								TOTAL	DIRECT INVESTMENT	PORTFOLIO INVESTMENT	OTHER INVESTMENT			
1=2 TO 5	2	3	4	5	6=7+8	7	8=9 TO 11	9	10	11	12	13=1+6+12	14	
2003	37,613	51,268	-6,600	-4,606	-2,450	-31,329	-292	-31,037	15,626	-17,491	-29,172	5,491	11,775	163,053.5
2004	30,821	52,466	-5,642	-13,738	-2,266	-14,704	-310	-14,393	15,256	-9,236	-20,412	4,351	20,469	183,464.0
2005	37,076	61,729	-4,478	-18,072	-2,104	-21,429	-336	-21,093	11,630	-5,485	-27,238	4,750	20,397	192,813.0
2006	47,295	68,953	-4,199	-15,223	-2,237	-22,779	-367	-22,412	19,865	-14,207	-28,069	2,480	26,996	208,991.8
2007	59,014	74,097	-3,929	-8,603	-2,552	-28,104	-391	-27,713	17,840	-25,008	-20,545	-1,613	29,298	234,545.6
2006 III	11,709	17,205	-1,118	-3,825	-554	-9,708	-98	-9,610	856	-1,661	-8,805	2,005	4,006	205,095.8
IV	12,643	18,693	-844	-4,625	-582	-3,459	-87	-3,372	4,531	-3,927	-3,975	303	9,487	208,991.8
2007 I	14,902	19,031	-1,631	-1,894	-603	-13,212	-93	-13,119	10,691	1,638	-25,447	-175	1,515	208,876.1
II	14,955	17,606	-1,271	-778	-601	-3,830	-97	-3,733	3,970	-1,282	-6,421	-1,990	9,136	220,503.9
III	18,265	21,954	-500	-2,534	-656	-11,206	-109	-11,097	3,135	-3,330	-10,902	-1,027	6,031	226,290.0
IV	10,892	15,506	-526	-3,397	-691	144	-92	236	44	-22,033	22,225	1,579	12,615	234,545.6
2008 I	10,224	13,017	-1,947	-117	-730	879	-101	979	2,883	-8,713	6,809	863	11,965	244,904.4
II	9,226	12,411	-1,685	-759	-742	-7,422	-98	-7,324	1,873	-8,248	-949	2,486	4,291	240,417.5
III P	10,707	14,376	-1,366	-1,517	-786	-12,440	-123	-12,317	-2,008	-7,056	-3,254	-408	-2,141	242,230.1

Source: Singapore Department of Statistics

Table IV.7 Official Foreign Reserves <sup>1/</sup>

END OF PERIOD	TOTAL FOREIGN RESERVES	SPECIAL DRAWING RIGHTS	RESERVE POSITION IN THE IMF	GOLD AND FOREIGN EXCHANGE	TOTAL FOREIGN RESERVES
	S\$ MILLION				US\$ MILLION
	1=2+3+4	2	3	4	5
2004	183,464.0	474.8	712.4	182,276.8	112,574.9
2005	192,813.0	477.2	291.2	192,044.6	116,172.6
2006	208,991.8	487.5	200.1	208,304.2	136,260.9
2007	234,545.6	503.9	128.6	233,913.1	162,956.8
2008 P	250,346.0	544.1	255.8	249,546.1	174,196.3
2007 JAN	206,764.3	482.7	173.8	206,107.8	134,573.2
FEB	209,391.2	489.0	173.8	208,728.4	137,058.6
MAR	208,876.1	488.2	185.8	208,202.1	137,735.7
APR	212,811.6	493.1	152.4	212,166.1	140,048.3
MAY	215,817.9	499.8	152.6	215,165.5	140,899.6
JUN	220,503.9	500.4	137.9	219,865.6	144,055.9
JUL	222,655.3	500.4	138.6	222,016.3	147,021.7
AUG	225,171.4	509.3	135.3	224,526.8	147,622.0
SEP	226,290.0	509.3	135.4	225,645.3	152,449.8
OCT	229,130.5	509.3	135.5	228,485.7	158,165.1
NOV	232,362.8	503.9	128.5	231,730.4	160,710.7
DEC	234,545.6	503.9	128.6	233,913.1	162,956.8
2008 JAN	237,445.1	501.6	128.7	236,814.8	167,648.8
FEB	239,359.0	506.6	124.5	238,727.9	171,735.3
MAR	244,904.4	508.2	125.0	244,271.2	177,462.3
APR	238,701.8	505.5	140.2	238,056.1	175,804.9
MAY	239,694.6	502.2	162.7	239,029.7	175,802.2
JUN	240,417.5	500.5	145.3	239,771.7	176,650.2
JUL	239,276.9	500.0	145.3	238,631.6	174,964.2
AUG	241,278.9	505.7	137.8	240,635.4	170,100.0
SEP	242,230.1	505.7	139.2	241,585.2	168,802.1
OCT	240,595.9	505.7	139.3	239,950.9	162,173.9
NOV	250,668.2	544.1	255.6	249,868.5	165,677.9
DEC P	250,346.0	544.1	255.8	249,546.1	174,196.3

<sup>1/</sup> Prior to May 1999, Singapore's official foreign reserves were valued at book cost. With effect from May 1999, the book value of foreign reserve assets are translated at market exchange rates prevailing at the end of each reporting month.

## Glossary

**Charge card/Credit card:** means any article, whether in physical or electronic form, of a kind commonly known as a credit card or charge card or any similar article intended for use in purchasing goods or services on credit, whether or not the card is valid for immediate use.

**Credit card rollover balance:** refer to the balance that is subject to interest charges because it is not settled within the 'free credit' period. This includes the minimum payment not settled by due date as well as the amount that is rolled over after settlement of the minimum sum.

**Demand deposits:** (sight deposits or call deposits) refer to deposits that are payable on demand or without notice, other than savings deposits and include:

- Current accounts (in any currency)
- Unclaimed balances on current accounts
- Unclaimed deposits (including unclaimed fixed and savings deposits)
- Deposits at call without notice including overnight money.

**Equities:** refer to contracts related to an equity or equity index financial instrument or whose cash flows are determined by reference to the performance of an equity, portfolio of equities or an equity market index. Examples of contracts under this category include equity options, convertible securities, equity index swaps, exchange-traded options as well as futures contracts on equity indices.

**Fixed deposits:** (time deposits) cover deposits in all currencies for a fixed period at a fixed rate of interest and which cannot be withdrawn by cheques. Included are deposits at call with notice. Overdue fixed deposits as distinct from unclaimed fixed deposits are to be classified under this item.

**Gross premium:** refers to gross premiums received or receivable including portfolio premiums, after deduction of discounts and return premiums, which have been entered in the books of the registered insurer during the period. Commissions shall not be deducted from gross premium.

**Liquidity ratio:** (Please refer to MAS Notice 613 Appendix 2)

**Net premium:** refers to the net amount of premiums after deduction of return premiums and payments in respect of reinsurance business ceded.

**Other deposits:** refer to all other deposits not specifically covered above, including margins received for guarantees, letters of credit issued, open contracts and sundry deposits of customers

**Reserves:** Statutory reserves refer to those in the reserve fund maintained under section 22 of the Banking Act. Other reserves include any other reserves appropriated out of profits and accumulated over the years that are not designed to meet any known liability, contingency, commitment or diminution in value of assets. These exclude amounts set aside for specific uses like provisions for bad and doubtful debts, taxation, retirement benefits, or fees.

**Savings deposits:** (savings accounts) cover deposits payable on demand or by notice. Such deposits cannot be withdrawn by cheques.

**Single premium:** refers to the premium for covering periods in excess of one year. Hence, single premiums paid in respect of insurance contracts of less than one year, for example, travel insurance shall be classified as "Regular Premiums".

## Glossary (continued)

**Statutory liquid assets:** Liquid assets comprise the following items:

- a. Notes and coins which are customary tender in Singapore.
- b. Singapore Government Securities ("SGS") held by a bank. Includes SGS held under a reverse repurchase agreement.
- c. Debt securities or sukuk denominated in SGD -
  - (i) issued by a statutory board in Singapore, with a minimum issue size of SGD 200 million, at 90% of its value; or
  - (ii) with a minimum issue size of SGD 200 million which satisfies either the long term issue or short term issue credit ratings and at the relevant value set out in Appendix 4, and held by a bank and includes any such debt securities or sukuk held under a reverse repurchase agreement<sup>1</sup>;
- d. Any bill of exchange which satisfies the requirements set out in Appendix 3; provided always that -
  - (i) the asset shall be free from any prior encumbrances;
  - (ii) where the asset is a debt security or sukuk, it shall not be a convertible debt security or sukuk and if the bank holds more than 20% of the total market of a particular issue of debt securities or sukuk (including issues from different tranches), the bank shall only treat as liquid assets, 50% of the value of those debt securities or sukuk;
  - (iii) the asset does not arise or result from any contractual or other arrangements with, or investments in, a counterparty related to the bank<sup>2</sup>.

---

<sup>1</sup> For the avoidance of doubt, where an issue of such debt securities or sukuk is partially redeemed such that the outstanding issue size falls below SGD200m, those debt securities or sukuk would no longer be approved as liquid assets.

<sup>2</sup> A counterparty related to a bank includes any holding company, subsidiary or associated company of the bank and any subsidiary or associated company of any holding company of the bank.