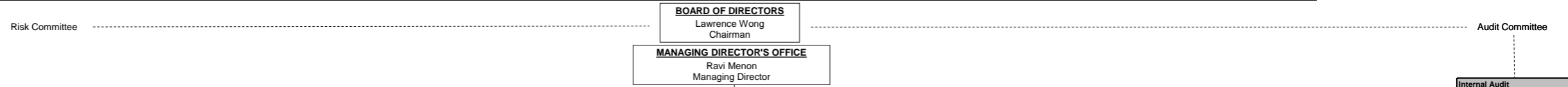




Monetary Authority of Singapore Organisation Chart

As at 27 Aug 2023



| |
|-----------------------|
| Internal Audit |
| Low Sze Gin |
| Division I |
| Dawn Ho |
| Division II |
| Ong Lay Hong |

| ECONOMIC POLICY Edward Robinson (Chief Economist) | MARKETS & DEVELOPMENT Leong Sing Chiong | | | | FINANCIAL SUPERVISION Ho Hern Shin | | | | CORPORATE DEVELOPMENT Jacqueline Loh | | |
|---|--|--|---|---|---|--|--|--|---|--|--|
| ECONOMICS & KNOWLEDGE MANAGEMENT Celine Sia | MARKETS & INVESTMENT Bernard Wee | DEVELOPMENT & INTERNATIONAL Gillian Tan | SUSTAINABILITY Gillian Tan (Chief Sustainability Officer) | BANKING & INSURANCE Marcus Lim | CAPITAL MARKETS Lim Tuang Lee | POLICY, PAYMENTS & FINANCIAL CRIME Loo Siew Yee | TECHNOLOGY Vincent Loy (Covering Chief Data Officer) | ORGANISATION & PEOPLE DEVELOPMENT Wong Zeng Yi | FINANCE, RISK & CURRENCY Cindy Mok | | |
| Economic Analysis Marcus Fum | Monetary & Domestic Markets Management Ethan Goh | Financial Centre Development Phua Wee Ling | FinTech & Innovation Sopnendu Mohanty (Chief FinTech Officer) | Deputy Chief Sustainability Officer Pamela Lee | Banking Department I Lim Aik Yang | Anti-Money Laundering Thong Leng Yeng | Data & Technology Architecture Damien Pang | Organisation Development & Communications Lydia Wee | Finance Wai Ker-Yang | | |
| Monetary & Price Analysis Tan Yin Ying | Domestic Markets Management Jovine Loy | Banking Development Kelly Teo | FinTech Ecosystem Office Damien Pang (Deputy Chief FinTech Officer) | Markets & Ecosystem Development Tan Shi Min | Division I Tay Yen Joo | AML Policy Annabel Tan | Data & Collaboration Platform Eric Chee | Corporate Communications Dawn Chew | | | |
| Labor Market & Research Ng Ding Xuan | Monetary Management Alvin Teo | Business Competitiveness Candy Ho | FinTech Infrastructure Office Alan Lim | Capabilities, Enablers & Futures Lim Bey An | Division II Goh Soo Hui | AML Risk Surveillance Loy Xingkai | Data Analytics & Engineering Ang Kian Wee | Organisation Development & Planning Elean Chin | | | |
| Modelling Cyrene Chew | Markets Information Infrastructure Evi Farida | Manpower Policy & Data Shiao Song Biao | Payments Development & Data Connectivity Office Jo Yeo | Transition, Data & Partnerships Lee Wei Yang | Division III Tan Yee Theng | AML Supervision Ian Lee | IT Operations Prasanth Kumar | Transformation Foong Kooi Fei | | | |
| Economic Surveillance & Forecasting Tu Suh Ping | Reserve Management Bernard Wee | Talent Development & Engagement Shermaine Tay | AI Development Office Li Xuchun | | | Specialist Leader (AML/CFT Policy) Alvin Koh | Cyber Security Claudean Zheng | Corporate Services Bernard Yeo | | | |
| International Economy Sian Fenner | Asset Allocation Julian Soo | Specialist Leader (Tax) Fong Kok Choy | Green FinTech Office Lionel Wong | Banking Department II Goh Gek Choo | Capital Markets Intermediaries II Tan Keng Heng | Specialist Leader (AML Risk Solutions) Gu Yuchen | Specialist Leader (Enterprise Architecture) Prasanth Kumar | Risk Management Nathanael Lim | | | |
| Domestic Economy Tu Suh Ping | External Fund Management Jeremy Hor | | | Division I Tan Jun Siong | Division I Valerie Tong | Specialist Leader (AML Supervision) Sheryl Lim | Specialist Leader (Cybersecurity Operations) Thomas Ng | Enterprise Risk & Business Continuity Management Kee Ann Nee | | | |
| Enterprise Knowledge Kenneth Gay | Investment Research & Strategy Evelyn Sit | Financial Markets Development Lim Cheng Khai | | Division II Joyce Tong | Division II Lim May Yee | Enforcement Peggy Pao | Specialist Leader (Artificial Intelligence) Ng Tian Tsong | Investment Risk & Performance Management Tang Qing Kang | | | |
| Data Governance & Transformation Harry Lee | Portfolio Management & Analytics Kelvin Ng | Insurance, Infrastructure & Trade Finance Meena Chandra | | Financial Risk Specialist Justina Lew | Division III Sin Wun Yi | Banking & Insurance Investigations Lee King See | Information Technology Wang Wei-Lung | Specialist Leader (Portfolio Strategy - Risk) Riswanto Tosali | | | |
| Knowledge & Records Laurencia Wee (Chief Records Officer) | Specialist Leader (Macro Investment Research) Diane Ho | Financial Products & Solutions Eugene Leong | | Specialist Leader (Liquidity & ALM Risks) Leung Man | Capital Markets Intermediaries III Koh Hong Eng | Market Conduct Investigations Division I Tan Beng Hwa | Central Banking & Development Platforms Mok Pei Hong | Currency Merlyn Ee | | | |
| Statistics & Library Soo Cheng Ghee | Advisor (Library & Records) Susan Song-Lim | Asset Management & Funds Feng Furmin | | Banking Department III Tao Kok Ming | Division I Teo Kai Xiang | Market Conduct Investigations Division II Ang Eng Seng | Supervision Platforms Leonard Tan | Coins & Business Excellence Cheong Si Ying | | | |
| Macprudential Surveillance Leou Jie Dong | | Specialist Leader (Infrastructure & Blended Finance) Lee Sze Liang | | Division I Philip Low | Division II Neo Sok Hsien | Financial Misconduct Surveillance Amanda Lam | Enterprise Platforms Ferhad Ismail | Notes & Services Martin Teo | | | |
| Financial & Special Studies Ng Heng Tiong | London Office Lam Chee Hao | International Gillian Tan | | Division II Neo Boon Sim | Division III Jane Teo | Enforcement Policy & Legal Charmaine Chiu | Payment Systems Low Xue Ni | | | | |
| Financial Surveillance Tan Siang Meng | New York Office Tan Chin Wee | Regional Development Denise Wong | | Division III Fong Wai Seng | Specialist Leader (Derivatives Regulation) Yolanda Constantine | Specialist Leader (Forensic Accounting) Lim Sio Hoon | Specialist Leader (Solution Architecture) Charlie Mei | | | | |
| Specialist Leader (Macprudential Surveillance) Aloysius Lim | | China Offices Melwyn Teo | | Insurance Daniel Wang | Corporate Finance & Consumer Kee Rui Xiong | Prudential Policy Andrew Tan | Specialist Leader (Payment Systems Operations) Ben Ong | | | | |
| Chief, Macroeconomic Surveillance Tu Suh Ping | | | | Consumer Issues Alex Lee | Corporate Finance & Investment Products Alex Lee | Capital & Liquidity Policy Sandy Ho | Technology & Cyber Risk Supervision Tan Yeow Seng (Chief Cyber Security Officer) | | | | |
| | | | | Specialist Leader (Mergers & Acquisitions) Rebecca Chua | Consumer Issues Rebecca Chua | Prudential Advisory Yong Choon Mun | Division I Tommy Tan | | | | |
| | | | | Specialist Leader (Offerings & Listings) Daniel Teo | Specialist Leader (Sustainable Finance Disclosures) Jeannie Stamppe | Regulatory Framework Pearl Chan | Division II Lim Tong Lee | | | | |
| | | | | Deputy Chief Examiner (Insurance) Chong Ching San | Markets Policy & Infrastructure Abigail Ng | Payments Ken Nagatsuka | MAS Academy Wong Zeng Yi | | | | |
| | | | | Specialist Leader (Actuarial) Gilbert Chin | Capital Markets Policy Merion Anggerek | Payments Supervision Michelle Tan | MAS Academy Goh Mui Pong | | | | |
| | | | | Inspection & Supervisory Methodologies Valerie Tay | Market Conduct Policy Chua Yang Leng | Payments Policy Angeline Lam | | | | | |
| | | | | Inspection Division I Foo Swee Lih | Markets & Infrastructure Supervision Ian Chung | Specialist Leader (Payment Systems Policy & Supervision) Lau Tze Hon | | | | | |
| | | | | Inspection Division II Thng Teck Soon | Specialist Leader (Financial Markets Infrastructure) Loh Pui Hoon | | | | | | |
| | | | | Inspection Division III Karen Lim | | | | | | | |
| | | | | Supervisory Methodologies, Tools & Analytics Ronald Sin | | | | | | | |
| | | | | SupTech, Surveillance & Analytics Seetoh Kin Choong | | | | | | | |
| | | | | Special Projects Lee Keng Yi | | | | | | | |