

# MONETARY AUTHORITY OF SINGAPORE

---

## MONTHLY STATISTICAL BULLETIN

---

*March 2007*

*Co-ordinated by:*  
Macroeconomic Surveillance Department  
Monetary Authority of Singapore  
MAS Building, 10 Shenton Way  
Singapore 079117  
Republic of Singapore

## CONTENTS

Highlights of Monetary and Financial Developments .....	5
---	---

### STATISTICAL SECTION

#### I MONEY AND BANKING

I.1	Money Supply .....	9
I.2A	Monetary Survey .....	10
I.2B	Monetary Authorities: Assets and Liabilities .....	11
I.3A	Banks: Assets and Liabilities of Domestic Banking Units.....	12
I.3B	Banks: Assets of Domestic Banking Units.....	13
I.3C	Banks: Liabilities of Domestic Banking Units.....	16
I.4	Banks: Deposits (excluding S\$NCDs) of Domestic Banking Units by Types of Non-bank Customers.....	17
I.5A	Banks: Loans and Advances of Domestic Banking Units to Non-bank Customers by Industrial Classification .....	19
I.5B	Banks: Loans and Advances of Asian Currency Units to Non-bank Customers by Industrial Classification .....	21
I.6	Banks: Limits Granted and Percentage Utilised for Loans and Advances of Domestic Banking Units to Non-bank Customers by Industrial Classification....	23
I.7	Banks: Types of Loans and Advances of Domestic Banking Units to Non-bank Customers .....	25
I.8	Banks: Statutory Liquidity Position of Domestic Banking Units .....	26
I.9	Banks: Domestic Banking Units External Assets and Liabilities .....	27
I.10	Banks: Combined Assets and Liabilities of Domestic Banking Units (DBUs) and Asian Currency Units (ACUs) .....	28
I.11	Asian Dollar Market: Assets of Asian Currency Units .....	29
I.12	Asian Dollar Market: Liabilities of Asian Currency Units .....	30
I.13	Asian Dollar Market: Maturities of Assets and Liabilities of Asian Currency Units .....	31
I.14	Asian Dollar Market: Interbank and Non-bank Funds by Selected Regions .....	32
I.15	Credit and Charge Card Statistics .....	34

#### II NON-BANK FINANCIAL INSTITUTIONS

II.1	Finance Companies: Assets and Liabilities .....	35
II.2	Finance Companies: Loans and Advances .....	36
II.3	Merchant Banks: Assets and Liabilities of Domestic and Asian Currency Unit Operations .....	37
II.4	Merchant Banks: Assets and Liabilities of Domestic Unit Operations .....	38
II.5	Insurance Companies: Assets .....	39
II.6	General Insurance Companies: Premiums and Claims .....	41
II.7	Life Insurance Companies: New Business .....	42
II.8	Life Insurance Companies: Business in Force .....	43

#### III FINANCIAL MARKETS

III.1A	Exchange Rates .....	44
III.1B	Daily Exchange Rates and Forward Swap Points for US\$/S\$.....	46
III.2	Foreign Exchange Market Turnover .....	47
III.3	Domestic Interest Rates .....	48
III.4	Interest Rates of Banks and Finance Companies .....	49
III.5	Singapore Government Securities (SGS): Issuance, Redemption and Outstanding Amount .....	50
III.6	Singapore Government Securities (SGS) : Prices and Yields .....	51
III.7	Singapore Government Securities (SGS) : Average Daily Turnover Volume .....	52

III.8	Singapore Exchange Securities Trading Ltd (SGX-ST): Price Index, Number of Listed Companies, Turnover and Capitalisation .....	53
III.9	Singapore Exchange Derivatives Trading Ltd (SGX-DT): Turnover and Open Interest (Futures and Options) .....	54
<b>IV</b>	<b>KEY ECONOMIC INDICATORS</b>	
IV.1	Gross Domestic Product by Sector .....	55
IV.2	Gross Domestic Product by Expenditure .....	56
IV.3	Consumer Price Index .....	57
IV.4	Other Price Indices .....	58
IV.5	Government Finance .....	59
IV.6	Balance of Payments .....	60
IV.7	Official Foreign Reserves .....	61

## **ABBREVIATIONS AND SYMBOLS**

p	: preliminary
r	: revised
..	: negligible
–	: nil
n.a.	: not available
S\$NCD	Singapore dollar negotiable certificates of deposit
SIBOR	Singapore inter-bank offered rate
REPO	Repurchase agreement
T-BILL	Treasury bill

## **NOTE TO STATISTICAL TABLES**

Due to rounding, the sum of separate items may differ from the totals shown.

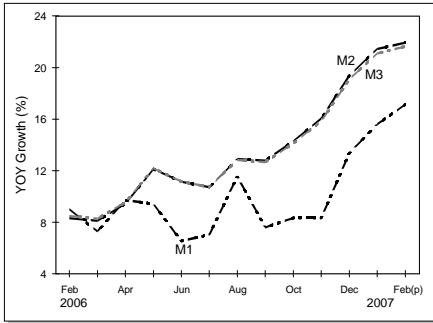
## **CHANGES IN THIS ISSUE**

Please see footnote to Table III.2 Foreign Exchange Market Turnover.

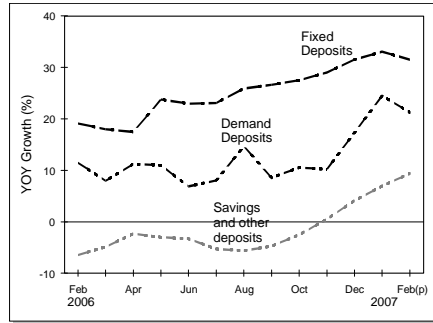
# Highlights of Monetary and Financial Developments

## MONEY SUPPLY

**Monetary Aggregates**

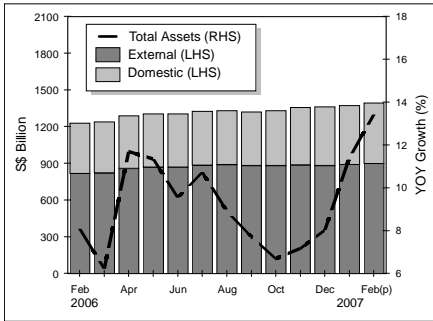


**Components of Money**

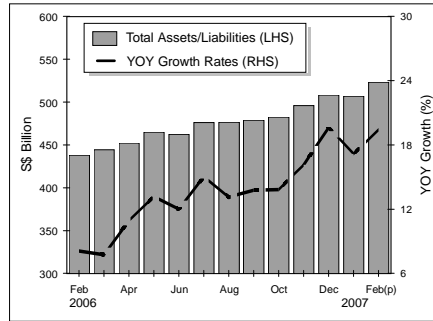


## BANKS

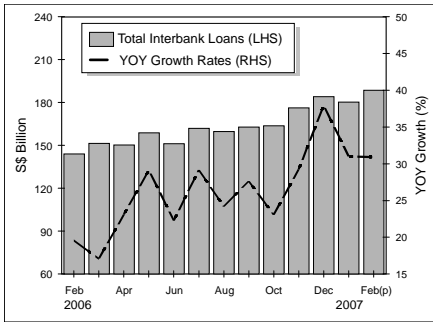
**Combined Assets of DBUs and ACUs<sup>1</sup>**



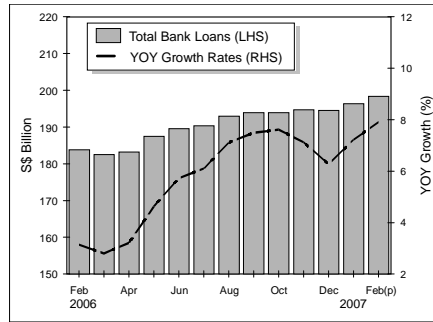
**Assets/Liabilities of DBUs**



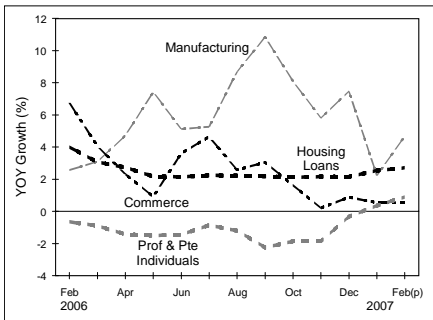
**DBUs' Interbank Loans**



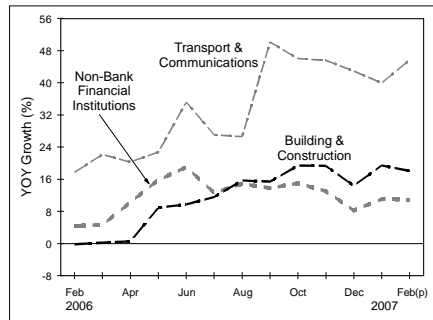
**DBUs' Loans to Non-bank Customers**



**DBUs' Non-bank Loans by Sector (i)**

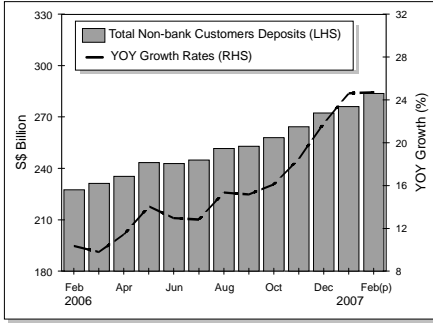


**DBUs' Non-bank Loans by Sector (ii)**

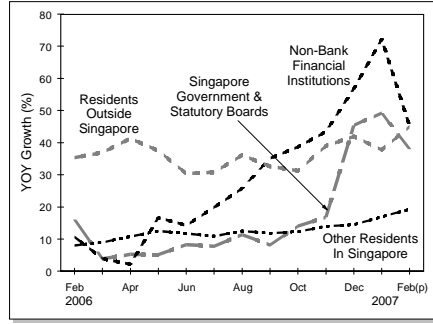


1 Excluding inter-unit transactions.

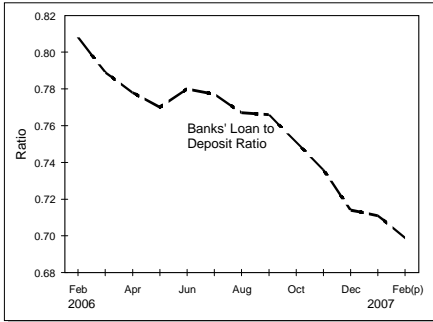
### DBUs' Non-bank Customers' Deposits



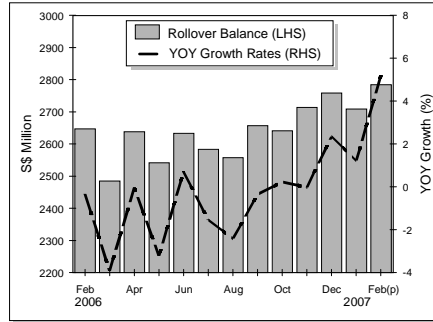
### DBUs' Non-bank Deposits by Type of Customers



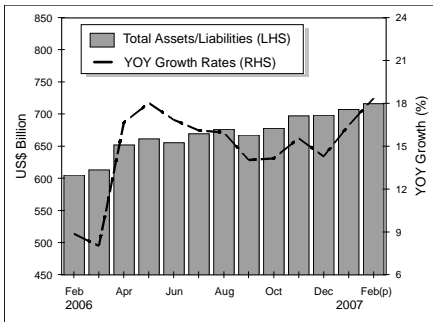
### Loan-to-Deposit Ratio



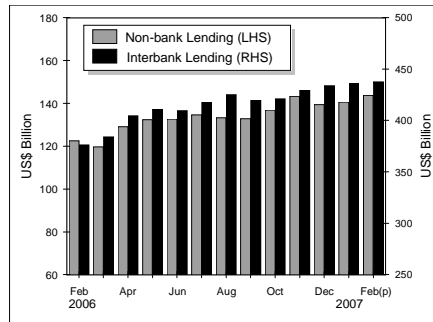
### Credit Card Rollover Balance



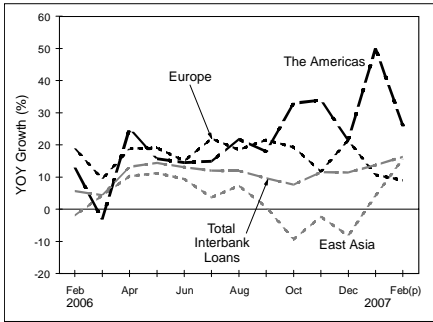
### Assets/Liabilities of ACUs



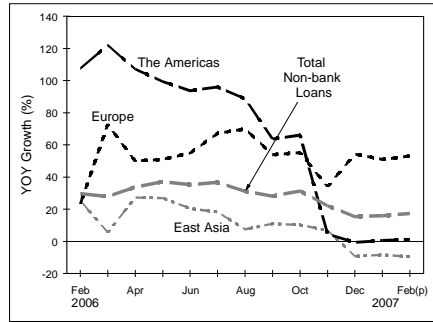
### ACUs' Interbank and Non-bank Customers Loans



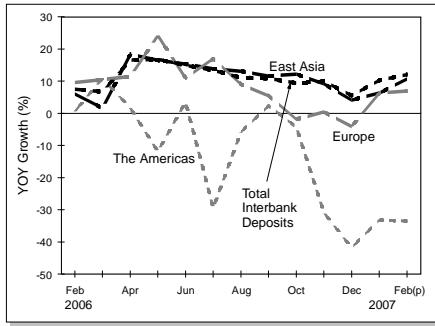
### ACUs' Interbank Loans by Regions



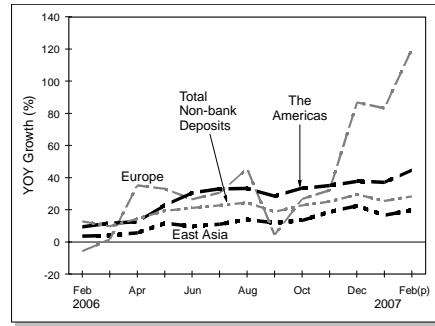
### ACUs' Non-bank Loans by Regions



**ACUs' Interbank Deposits by Regions**

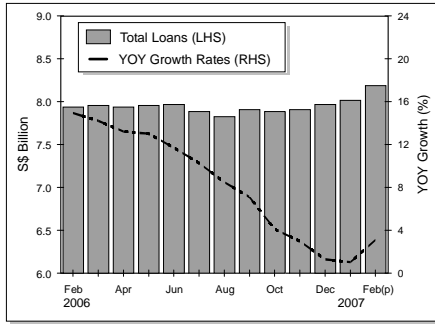


**ACUs' Non-bank Deposits by Regions**

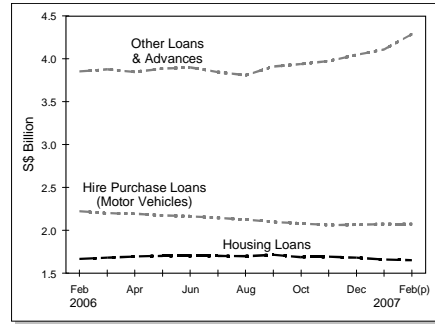


**FINANCE COMPANIES**

**Finance Company Loans**

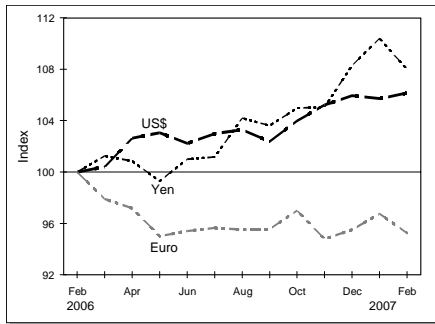


**Finance Company Loans by Sector**

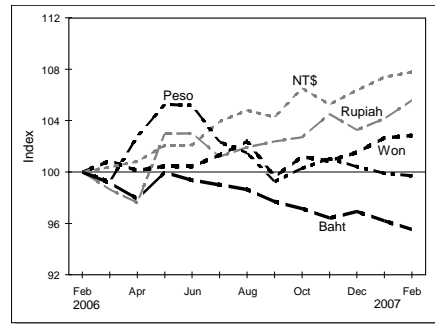


**MONEY MARKETS**

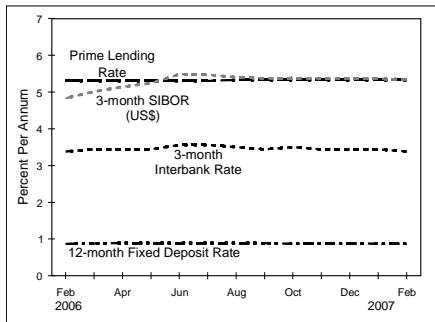
**Singapore Dollar Exchange Rates**



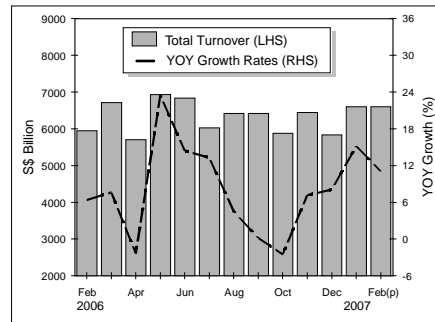
**Singapore Dollar Exchange Rates**



**Interest Rates**

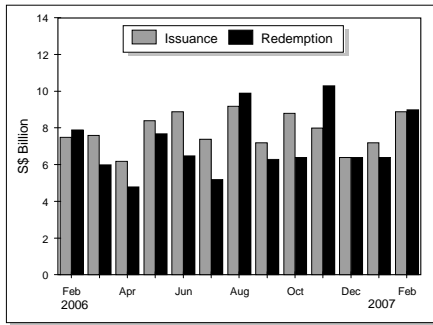


**Foreign Exchange Turnover**

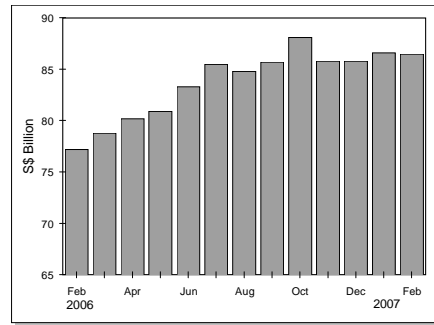


## CAPITAL MARKETS

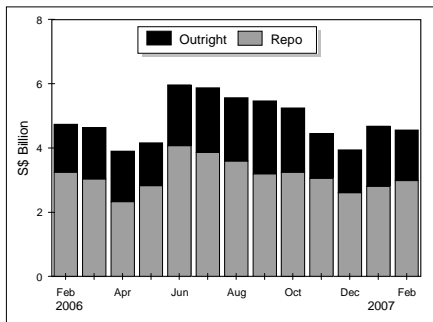
### SGS Issuance and Redemption



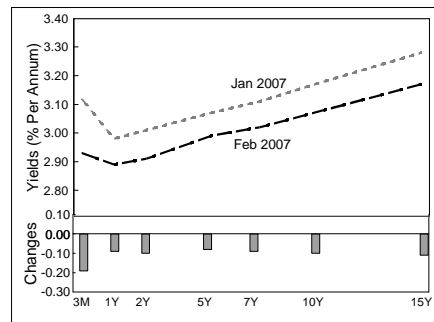
### Outstanding SGS



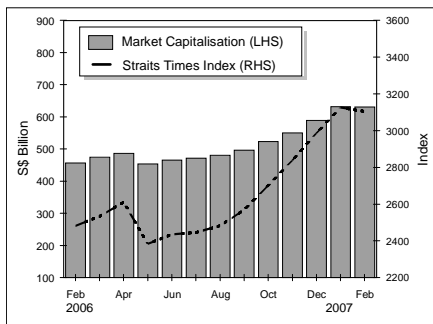
### SGS Average Daily Turnover



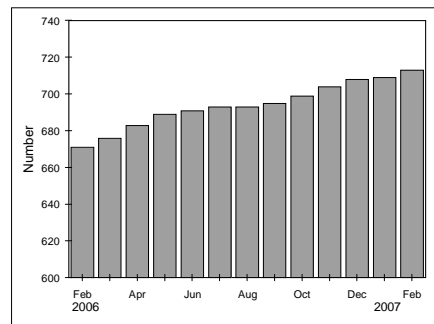
### SGS Yields



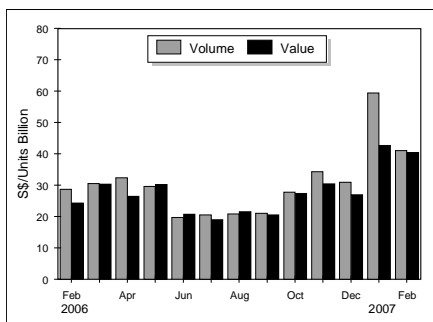
### Stock Market Capitalisation<sup>2</sup> and Straits Times Index



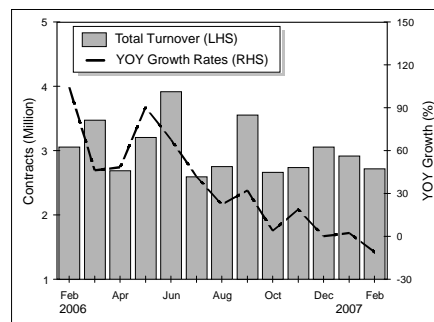
### Number of Listed Companies



### Stock Market Turnover



### Futures and Options Turnover



2 In May 2005, Singapore Exchange Securities Trading Limited (SGX-ST) changed its market capitalisation on computation methodology, which is stated below. For more information, please refer to SGX's website [www.sgx.com.sg](http://www.sgx.com.sg).

SGX-ST Market Capitalisation = Market Capitalisation of All Domestic Companies + Market Capitalisation of Primary-Listed Foreign Companies + Market Capitalisation of Secondary-Listed Foreign Companies which majority of trading activity takes place in SGX-ST.



Table I.1 Money Supply

S\$ MILLION

END OF PERIOD	QUASI-MONEY									NET DEPOSITS WITH FINANCE COMPANIES
	M3	M2	M1	CURRENCY IN ACTIVE CIRCULATION	DEMAND DEPOSITS	TOTAL	FIXED DEPOSITS	S\$ NCDS	SAVINGS & OTHER DEPOSITS	
	1=2+10	2=3+6	3=4+5	4*	5	6=7+8+9	7	8	9	
2002	188,815.4	180,308.1	35,828.2	12,360.3	23,467.9	144,479.9	81,597.5	225.6	62,656.8	8,507.3
2003	200,044.3	194,828.5	38,722.6	12,838.4	25,884.2	156,105.9	89,706.3	288.3	66,111.3	5,215.8
2004	212,182.7	206,977.9	44,162.3	13,694.0	30,468.3	162,815.6	93,360.2	515.0	68,940.4	5,204.8
2005	225,699.6	219,798.3	46,085.9	14,584.5	31,501.4	173,712.4	107,714.3	409.2	65,588.9	5,901.3
2006	268,783.4 r	262,404.1 r	52,242.6 r	15,284.7	36,957.9 r	210,161.5	141,653.7	220.8	68,287.0	6,379.3
2005 FEB	212,058.9	206,858.4	43,192.9	14,247.7	28,945.2	163,665.5	93,584.8	451.7	69,629.0	5,200.5
MAR	215,731.6	210,430.6	45,021.1	13,923.4	31,097.7	165,409.5	95,967.7	450.2	68,991.6	5,301.0
APR	216,340.3	210,981.9	44,666.6	13,996.7	30,669.9	166,315.3	97,486.0	409.8	68,419.5	5,358.4
MAY	216,370.1	210,941.1	45,294.8	13,975.5	31,319.3	165,646.3	97,513.3	412.6	67,720.4	5,429.0
JUN	219,239.2	213,696.2	45,778.2	13,972.2	31,806.0	167,918.0	100,071.4	412.5	67,434.1	5,543.0
JUL	220,700.1	215,162.7	45,726.8	14,131.0	31,595.8	169,435.9	101,262.3	412.0	67,761.6	5,537.4
AUG	221,005.3	215,417.2	44,894.6	14,069.9	30,824.7	170,522.6	102,537.7	411.9	67,573.0	5,588.1
SEP	223,080.5	217,358.8	45,727.8	14,158.6	31,569.2	171,631.0	104,030.0	453.8	67,147.2	5,721.7
OCT	225,092.5	219,287.4	46,137.9	14,411.2	31,726.7	173,149.5	106,816.2	444.1	65,889.2	5,805.1
NOV	225,206.3	219,421.3	46,783.6	14,309.8	32,473.8	172,637.7	107,193.5	379.2	65,065.0	5,785.0
DEC	225,699.6	219,798.3	46,085.9	14,584.5	31,501.4	173,712.4	107,714.3	409.2	65,588.9	5,901.3
2006 JAN	225,120.9	219,128.1	47,000.5	15,687.8	31,312.7	172,127.6	106,795.7	374.5	64,957.4	5,992.8
FEB	230,062.1	224,040.2	47,081.3	14,823.1	32,258.2	176,958.9	111,450.6	375.6	65,132.7	6,021.9
MAR	233,590.3	227,494.5	48,303.2	14,732.0	33,571.2	179,191.3	113,223.6	344.6	65,623.1	6,095.8
APR	236,965.8	230,903.9	49,003.2	14,890.4	34,112.8	181,900.7	114,491.8	592.6	66,816.3	6,061.9
MAY	242,723.7	236,538.2	49,565.0	14,812.9	34,752.1	186,973.2	120,685.1	592.1	65,696.0	6,185.5
JUN	243,714.4	237,497.0	48,776.9	14,788.1	33,988.8	188,720.1	123,027.2	491.4	65,201.5	6,217.4
JUL	244,372.7	238,232.3	48,943.9	14,809.2	34,134.7	189,288.4	124,630.6	490.7	64,167.1	6,140.4
AUG	249,353.4	243,224.2	50,080.7	14,725.8	35,354.9	193,143.5	129,085.4	281.7	63,776.4	6,129.2
SEP	251,352.4	245,129.7	49,201.8	14,935.8	34,266.0	195,927.9	131,709.5	254.7	63,963.7	6,222.7
OCT	256,870.5	250,631.0	49,981.1	14,911.1	35,070.0	200,649.9	136,165.3	254.7	64,229.9	6,239.5
NOV	260,901.4 r	254,616.2 r	50,684.8 r	14,901.3	35,783.5 r	203,931.4	138,285.8	257.8	65,387.8	6,285.2
DEC	268,783.4 r	262,404.1 r	52,242.6 r	15,284.7	36,957.9 r	210,161.5	141,653.7	220.8	68,287.0	6,379.3
2007 JAN	272,593.1	266,098.7	54,334.7	15,357.4	38,977.3	211,764.0	142,083.6	220.8	69,459.6	6,494.4
FEB P	279,839.7	273,140.9	55,146.2	16,037.3	39,108.9	217,994.7	146,548.2	205.9	71,240.6	6,698.8

Note :

Net deposits of finance companies excludes these institutions' deposits with banks.

Column 4

Figures exclude commemorative, numismatic and bullion coins issued by the Monetary Authority of Singapore and cash held by commercial banks and other financial institutions. The Board of Commissioners of Currency, Singapore merged with the Monetary Authority of Singapore in October 2002.

Table I.2A Monetary Survey

S\$ MILLION

END OF PERIOD	MONEY SUPPLY			DOMESTIC CREDIT			GOVERNMENT DEPOSITS	NET FOREIGN POSITION			OTHER ITEMS
	M1	QUASI-MONEY	M2	TOTAL	GOVERNMENT	PRIVATE SECTOR		TOTAL	MONETARY AUTHORITIES	BANKS	
	1	2	3=1+2	4=5+6	5	6		8=9+10	9	10	
2002	35,828.2	144,479.9	180,308.1	217,481.5	48,429.1	169,052.4	96,171.7	133,215.4	141,481.5	-8,266.1	-74,217.1
2003	38,722.6	156,105.9	194,828.5	230,204.9	51,950.6	178,254.3	96,204.4	150,044.0	161,928.6	-11,884.6	-89,216.0
2004	44,162.3	162,815.6	206,977.9	238,224.8	52,096.0	186,128.8	100,343.8	172,791.9	182,346.1	-9,554.2	-103,695.0
2005	46,085.9	173,712.4	219,798.3	240,558.3	50,760.0	189,798.3	110,851.2	193,710.2	191,790.1	1,920.1	-103,619.0
2006	52,242.6 r	210,161.5	262,404.1 r	256,410.4	57,346.6	199,063.8	111,834.0	225,574.4 r	208,691.6	16,882.8 r	-107,746.7 r
2005 FEB	43,192.9	163,665.5	206,858.4	239,071.7	52,494.4	186,577.3	104,606.6	177,787.8	183,119.8	-5,332.0	-105,394.5
MAR	45,021.1	165,409.5	210,430.6	238,856.4	53,302.0	185,554.4	103,806.8	182,089.3	185,245.6	-3,156.3	-106,708.3
APR	44,666.6	166,315.3	210,981.9	240,479.4	54,937.9	185,541.5	108,123.2	184,529.9	188,905.1	-4,375.2	-105,904.2
MAY	45,294.8	165,646.3	210,941.1	241,805.5	54,508.4	187,297.1	108,082.8	182,177.9	191,882.9	-9,705.0	-104,959.5
JUN	45,778.2	167,918.0	213,696.2	241,967.1	54,975.0	186,991.6	105,740.9	185,140.3	193,771.2	-8,630.9	-107,670.3
JUL	45,726.8	169,435.9	215,162.7	242,527.2	55,814.5	186,712.7	108,188.8	184,691.8	191,486.3	-6,794.5	-103,867.5
AUG	44,894.6	170,522.6	215,417.2	243,639.1	56,618.4	187,020.7	108,466.8	189,227.9	195,070.9	-5,843.0	-108,983.0
SEP	45,727.8	171,631.0	217,358.8	244,241.6	56,315.1	187,926.5	112,371.8	192,872.6	194,237.3	-1,364.7	-107,383.6
OCT	46,137.9	173,149.5	219,287.4	241,814.1	53,623.1	188,191.0	110,937.5	196,301.1	194,838.3	1,462.8	-107,890.3
NOV	46,783.6	172,637.7	219,421.3	239,672.1	50,405.2	189,266.9	109,226.8	194,990.1	192,981.9	2,008.2	-106,014.1
DEC	46,085.9	173,712.4	219,798.3	240,558.3	50,760.0	189,798.3	110,851.2	193,710.2	191,790.1	1,920.1	-103,619.0
2006 JAN	47,000.5	172,127.6	219,128.1	240,403.9	50,542.9	189,861.0	113,937.2	195,772.6	192,402.6	3,370.0	-103,111.2
FEB	47,081.3	176,958.9	224,040.2	240,272.1	50,479.6	189,792.5	113,445.0	200,181.2	192,392.2	7,789.0	-102,968.1
MAR	48,303.2	179,191.3	227,494.5	240,187.3	51,082.9	189,104.4	114,204.3	204,068.0	195,610.8	8,457.2	-102,556.5
APR	49,003.2	181,900.7	230,903.9	242,329.1	52,828.0	189,501.1	109,578.1	203,171.4	199,433.9	3,737.5	-105,018.5
MAY	49,565.0	186,973.2	236,538.2	247,372.5	54,453.7	192,918.8	112,638.2	210,553.8	200,279.6	10,274.2	-108,749.9
JUN	48,776.9	188,720.1	237,497.0	249,362.7	55,925.9	193,436.8	115,337.7	210,505.9	201,284.3	9,221.6	-107,033.9
JUL	48,943.9	189,288.4	238,232.3	250,816.5	57,492.0	193,324.5	118,368.0	213,665.3	202,528.1	11,137.2	-107,881.5
AUG	50,080.7	193,143.5	243,224.2	254,005.4	57,228.9	196,776.5	119,997.1	215,934.7	203,332.4	12,602.3	-106,718.8
SEP	49,201.8	195,927.9	245,129.7	255,772.9	58,414.2	197,358.7	120,779.0	219,694.6	203,990.9	15,703.7	-109,558.8
OCT	49,981.1	200,649.9	250,631.0	257,818.7	60,089.9	197,728.8	120,443.8	222,141.3	204,565.7	17,575.6	-108,885.2
NOV	50,684.8 r	203,931.4	254,616.2 r	255,702.0 r	56,993.3	198,708.7 r	116,164.9	224,931.1	206,414.4	18,516.7	-109,852.0
DEC	52,242.6 r	210,161.5	262,404.1 r	256,410.4	57,346.6	199,063.8	111,834.0	225,574.4 r	208,691.6	16,882.8 r	-107,746.7 r
2007 JAN	54,334.7	211,764.0	266,098.7	259,844.0	59,433.3	200,410.7	115,565.3	233,845.8	208,121.7	25,724.1	-112,025.8
FEB P	55,146.2	217,994.7	273,140.9	263,093.0	60,853.6	202,239.4	111,608.4	236,954.9	210,748.7	26,206.2	-115,298.6

Table I.2B Monetary Authorities: Assets and Liabilities

\$S MILLION

END OF PERIOD	ASSETS				LIABILITIES			OTHER ITEMS (NET)
	FOREIGN ASSETS	TOTAL	DOMESTIC CREDIT		RESERVE MONEY	FOREIGN LIABILITIES	GOVERNMENT DEPOSITS	
			GOVERNMENT	PRIVATE SECTOR				
	1	2=3+4	3	4	5	6	7	
2002	142,721.3	5,812.1	5,807.9	4.2	19,964.4	1,239.8	94,403.6	32,925.6
2003	163,189.5	6,396.0	6,394.7	1.3	20,652.8	1,260.9	94,391.0	53,280.8
2004	183,844.0	7,039.2	7,038.5	0.7	21,834.6	1,497.9	98,496.9	69,053.8
2005	193,601.2	7,010.2	7,009.6	0.6	23,395.8	1,811.1	107,771.5	67,633.0
2006	210,529.0	6,608.5	6,608.2	0.3	25,756.5	1,837.4	108,711.5	80,832.1
2005 FEB	184,621.8	6,837.6	6,837.0	0.6	22,492.4	1,502.0	102,682.6	64,782.4
MAR	186,771.5	6,837.0	6,836.4	0.6	22,044.7	1,525.9	101,278.7	68,759.2
APR	190,474.1	7,234.5	7,233.9	0.6	22,510.9	1,569.0	105,854.2	67,774.5
MAY	193,455.8	7,132.2	7,131.6	0.6	22,301.1	1,572.9	105,061.6	71,652.4
JUN	195,370.5	7,131.6	7,131.0	0.6	22,352.6	1,599.3	103,891.3	74,658.9
JUL	193,084.8	7,237.8	7,237.2	0.6	22,062.7	1,598.5	106,191.2	70,470.2
AUG	196,670.3	7,338.3	7,337.7	0.6	22,137.4	1,599.4	106,230.9	74,040.9
SEP	195,884.8	7,635.9	7,635.3	0.6	22,277.3	1,647.5	110,364.7	69,231.2
OCT	196,482.3	7,211.6	7,211.0	0.6	22,855.1	1,644.0	108,577.7	70,617.1
NOV	194,621.0	6,816.4	6,815.8	0.6	23,037.8	1,639.1	106,556.5	70,204.0
DEC	193,601.2	7,010.2	7,009.6	0.6	23,395.8	1,811.1	107,771.5	67,633.0
2006 JAN	194,214.1	7,009.7	7,009.2	0.5	25,286.1	1,811.5	112,025.9	62,100.3
FEB	194,209.3	6,909.1	6,908.6	0.5	23,247.7	1,817.1	111,169.1	64,884.5
MAR	197,428.4	6,908.7	6,908.2	0.5	23,275.8	1,817.6	111,880.1	67,363.6
APR	201,250.9	6,908.2	6,907.8	0.4	23,543.5	1,817.0	107,143.2	75,655.4
MAY	202,100.0	6,906.0	6,905.6	0.4	23,289.3	1,820.4	109,420.4	74,475.9
JUN	203,111.2	6,905.6	6,905.2	0.4	24,012.6	1,826.9	112,756.7	71,420.6
JUL	204,354.0	6,905.2	6,904.8	0.4	23,465.3	1,825.9	115,300.2	70,667.8
AUG	205,158.7	6,604.8	6,604.4	0.4	23,295.6	1,826.3	116,972.0	69,669.6
SEP	205,814.3	6,604.4	6,604.0	0.4	23,977.7	1,823.4	117,529.2	69,088.4
OCT	206,406.5	6,806.7	6,806.3	0.4	23,926.2	1,840.8	118,138.3	69,307.9
NOV	208,251.8	6,607.9	6,607.6	0.3	23,423.9	1,837.4	113,135.5	76,462.9
DEC	210,529.0	6,608.5	6,608.2	0.3	25,756.5	1,837.4	108,711.5	80,832.1
2007 JAN	209,965.5	6,609.1	6,608.8	0.3	25,062.9	1,843.8	112,859.1	76,808.8
FEB P	212,592.4	6,309.7	6,309.4	0.3	26,474.6	1,843.7	108,604.3	81,979.5

Table I.3A Banks: Assets and Liabilities of Domestic Banking Units

\$S MILLION

END OF PERIOD	ASSETS							LIABILITIES		
	TOTAL ASSETS/ LIABILITIES	CASH	AMOUNTS DUE FROM BANKS	BALANCES WITH MAS	SECURITIES AND EQUITIES	LOANS AND ADVANCES INCLUDING BILLS FINANCING	OTHER ASSETS	DEPOSITS OF NON-BANK CUSTOMERS	AMOUNTS DUE TO BANKS	OTHER LIABILITIES
	1	2	3	4	5	6	7*	8*	9	10*
2002	353,115.0	1,176.1	96,807.5	6,462.8	61,537.8	161,283.4	25,847.4	180,138.4	106,060.1	66,916.5
2003	362,528.4	1,210.2	97,549.3	6,592.0	64,133.2	171,443.5	21,600.3	194,231.5	103,559.0	64,738.0
2004	398,236.7	1,400.7	113,856.1	6,775.0	68,217.7	179,088.6	28,898.6	206,176.3	114,953.7	77,106.7
2005	425,222.5	1,349.4	133,505.2	7,466.1	70,228.9	183,109.4	29,563.6	223,718.0	120,849.1	80,655.4
2006	508,643.5	1,665.4	184,163.2	8,802.0	80,640.2	194,597.6	38,775.1	272,496.9 r	146,609.2	89,537.4 r
2005 FEB	405,640.0	1,442.0	120,564.1	6,779.2	69,416.8	178,295.6	29,142.3	206,300.4	115,856.6	83,483.1
MAR	412,842.9	1,202.1	129,573.9	6,895.4	70,011.9	177,643.3	27,516.5	210,769.5	120,974.8	81,098.7
APR	407,841.2	1,341.6	122,286.1	7,193.1	71,616.9	177,580.4	27,823.1	211,314.9	115,285.5	81,240.7
MAY	410,987.4	1,266.2	123,027.1	7,062.8	71,950.1	179,269.1	28,412.1	213,496.3	115,942.9	81,548.2
JUN	413,105.9	1,183.9	123,818.5	7,181.4	72,750.9	179,320.8	28,850.4	215,121.4	114,839.5	83,145.0
JUL	414,145.2	1,151.8	125,487.9	6,777.8	74,105.5	179,467.4	27,154.8	217,097.4	115,705.6	81,342.2
AUG	421,530.9	1,150.7	128,671.4	6,981.4	74,858.3	180,193.3	29,675.7	218,217.0	119,022.3	84,291.6
SEP	421,115.8	1,074.9	127,775.1	7,057.0	75,492.7	180,450.6	29,265.4	219,753.8	118,861.8	82,500.2
OCT	424,202.7	1,418.5	133,227.9	7,109.7	73,572.5	180,278.9	28,595.2	222,365.3	120,190.9	81,646.5
NOV	427,263.5	1,162.8	136,606.0	7,611.1	69,786.8	181,797.4	30,299.6	223,261.9	120,755.9	83,245.7
DEC	425,222.5	1,349.4	133,505.2	7,466.1	70,228.9	183,109.4	29,563.6	223,718.0	120,849.1	80,655.4
2006 JAN	432,649.4	1,888.4	137,807.7	7,508.4	69,915.0	183,221.4	32,308.5	221,638.2	124,325.5	86,685.7
FEB	438,400.8	1,258.6	144,135.8	7,171.4	69,876.1	183,889.8	32,069.1	227,653.4	123,694.1	87,053.3
MAR	444,829.9	1,108.2	151,700.0	7,327.9	70,680.8	182,623.1	31,389.9	231,428.4	128,489.1	84,912.5
APR	452,471.7	1,368.5	150,543.8	7,299.5	72,407.8	183,275.7	37,576.4	235,474.8	125,275.0	91,721.9
MAY	465,153.1	1,182.2	158,855.8	7,286.9	73,727.9	187,568.9	36,531.4	243,490.4	129,873.3	91,789.4
JUN	462,643.2	1,357.0	151,436.2	7,896.2	76,663.7	189,601.2	35,688.8	242,999.9	130,740.8	88,902.5
JUL	476,363.9	1,262.6	162,078.0	7,518.2	78,481.3	190,416.4	36,607.3	244,937.6	140,907.4	90,518.9
AUG	476,827.7	1,163.2	159,827.4	7,606.5	79,284.2	192,996.2	35,950.2	251,723.8	136,189.4	88,914.5
SEP	479,160.6	1,197.3	163,106.9	7,812.7	79,000.4	193,968.8	34,074.5	253,082.4	137,397.3	88,680.9
OCT	482,878.3	1,293.5	163,959.1	7,721.3	81,334.4	194,004.4	34,565.5	258,211.8	136,179.6	88,486.9
NOV	496,172.8 r	1,167.4	176,533.3	7,361.3	79,174.5	194,744.2 r	37,192.1	264,531.9 r	142,514.0	89,126.9
DEC	508,643.5	1,665.4	184,163.2	8,802.0	80,640.2	194,597.6	38,775.1	272,496.9 r	146,609.2	89,537.4 r
2007 JAN	506,892.8	1,605.2	180,524.0	8,147.6	82,893.2	196,446.6	37,276.2	276,181.6	137,445.3	93,266.0
FEB P	523,492.6	1,826.6	188,679.7	8,545.8	85,804.0	198,420.3	40,216.1	283,882.9	143,273.3	96,336.4

Column 7 From March 2004, the value of fixed assets is reported before depreciation.  
 Column 8 Excludes non-bank customers' holdings of S\$NCDs.  
 Column 10 From March 2004, other liabilities include accumulated depreciation for fixed assets.

Table I.3B Banks: Assets of Domestic Banking Units

S\$ MILLION

END OF PERIOD	TOTAL ASSETS	CASH	BALANCES WITH MAS	LOANS AND ADVANCES INCLUDING BILLS FINANCING				
				TOTAL	LOANS AND ADVANCES		BILLS DISCOUNTED OR PURCHASED	
					RESIDENT	NON-RESIDENT	PAYABLE IN SINGAPORE	PAYABLE OUTSIDE SINGAPORE
2002	353,115.0	1,176.1	6,462.8	161,283.4	154,043.5	4,192.2	1,707.7	1,340.0
2003	362,528.4	1,210.2	6,592.0	171,443.5	163,495.5	4,058.8	2,064.8	1,824.4
2004	398,236.7	1,400.7	6,775.0	179,088.6	168,602.9	4,940.9	2,405.8	3,139.0
2005	425,222.5	1,349.4	7,466.1	183,109.4	170,846.7	6,954.6	2,074.8	3,233.3
2006	508,643.5	1,665.4	8,802.0	194,597.6	179,428.2	9,009.2	2,653.3	3,506.9
2005 FEB	405,640.0	1,442.0	6,779.2	178,295.6	168,246.9	5,022.1	2,155.3	2,871.3
MAR	412,842.9	1,202.1	6,895.4	177,643.3	167,408.3	5,014.3	2,327.6	2,893.0
APR	407,841.2	1,341.6	7,193.1	177,580.4	167,037.0	5,175.6	2,298.7	3,069.0
MAY	410,987.4	1,266.2	7,062.8	179,269.1	168,459.5	5,139.6	2,148.5	3,521.5
JUN	413,105.9	1,183.9	7,181.4	179,320.8	167,932.7	5,285.3	2,457.5	3,645.3
JUL	414,145.2	1,151.8	6,777.8	179,467.4	167,966.6	5,404.0	2,408.7	3,688.1
AUG	421,530.9	1,150.7	6,981.4	180,193.3	168,255.8	5,826.2	2,300.6	3,810.8
SEP	421,115.8	1,074.9	7,057.0	180,450.6	168,684.6	5,864.5	2,280.0	3,621.5
OCT	424,202.7	1,418.5	7,109.7	180,278.9	168,444.7	6,056.0	2,260.5	3,517.7
NOV	427,263.5	1,162.8	7,611.1	181,797.4	170,030.1	6,198.4	2,055.3	3,513.5
DEC	425,222.5	1,349.4	7,466.1	183,109.4	170,846.7	6,954.6	2,074.8	3,233.3
2006 JAN	432,649.4	1,888.4	7,508.4	183,221.4	170,649.5	6,967.0	2,233.4	3,371.5
FEB	438,400.8	1,258.6	7,171.4	183,889.8	170,789.8	7,498.9	2,017.3	3,583.9
MAR	444,829.9	1,108.2	7,327.9	182,623.1	169,664.7	7,325.0	2,074.2	3,559.2
APR	452,471.7	1,368.5	7,299.5	183,275.7	170,042.4	7,495.3	2,365.9	3,372.1
MAY	465,153.1	1,182.2	7,286.9	187,568.9	173,580.2	7,929.4	2,740.1	3,319.1
JUN	462,643.2	1,357.0	7,896.2	189,601.2	174,361.2	8,612.3	2,885.8	3,741.9
JUL	476,363.9	1,262.6	7,518.2	190,416.4	174,920.2	9,165.8	2,644.0	3,686.4
AUG	476,827.7	1,163.2	7,606.5	192,996.2	177,079.4	9,479.4	2,684.7	3,752.7
SEP	479,160.6	1,197.3	7,812.7	193,968.8	178,444.8	9,210.0	2,455.9	3,858.1
OCT	482,878.3	1,293.5	7,721.3	194,004.4	178,371.6	9,382.0	2,564.4	3,686.5
NOV	496,172.8	1,167.4	7,361.3	194,744.2	179,104.0	9,297.4	2,504.6	3,838.3
DEC	508,643.5	1,665.4	8,802.0	194,597.6	179,428.2	9,009.2	2,653.3	3,506.9
2007 JAN	506,892.8	1,605.2	8,147.6	196,446.6	180,830.5	9,433.2	2,570.9	3,612.1
FEB P	523,492.6	1,826.6	8,545.8	198,420.3	181,871.3	9,950.6	2,765.3	3,833.1

Columns 7 & 8 Prior to June 1999, data on bills financing include bills refinanced by the Monetary Authority of Singapore. Excludes bills rediscounted between banks.

Table I.3B Banks: Assets of Domestic Banking Units (continued)

S\$ MILLION

END OF PERIOD	TOTAL ASSETS								
	SECURITIES AND EQUITIES ISSUED BY PRIVATE ENTITIES					DEBT SECURITIES BY GOVERNMENT RELATED ENTITIES			
	TOTAL	DEBT SECURITIES		EQUITY INVESTMENTS		TOTAL	GOVERNMENT OF SINGAPORE	STATUTORY AUTHORITIES	OTHER GOVERNMENTS
		IN SINGAPORE	OUTSIDE SINGAPORE	IN SINGAPORE	OUTSIDE SINGAPORE				
	9=10+11+12+13	10	11	12	13	14=15+16+17	15	16	17
2002	18,197.0	7,446.2	3,537.4	5,474.3	1,739.1	43,340.8	42,621.2	376.5	343.2
2003	17,425.9	7,644.9	3,405.5	4,643.2	1,732.4	46,707.3	45,555.8	404.6	746.8
2004	21,211.6	6,965.2	4,162.8	7,058.4	3,025.1	47,006.1	45,057.5	1,095.7	852.9
2005	24,057.2	7,084.2	5,370.7	8,324.0	3,278.3	46,171.7	43,750.4	1,468.1	953.3
2006	26,749.0	6,855.6	8,321.0	8,077.7	3,494.7	53,891.2	50,738.3	2,048.8	1,104.1
2005 FEB	22,007.0	7,199.7	3,844.4	7,898.2	3,064.6	47,409.8	45,657.4	1,076.5	675.9
MAR	21,666.6	6,937.7	3,883.2	7,823.7	3,021.9	48,345.3	46,465.6	1,056.4	823.3
APR	21,847.3	7,143.1	3,896.7	7,820.9	2,986.6	49,769.6	47,703.9	1,241.1	824.5
MAY	22,460.7	7,510.1	4,030.8	7,933.1	2,986.7	49,489.3	47,376.8	1,245.4	867.1
JUN	22,807.3	7,919.1	4,438.6	7,460.6	2,989.1	49,943.6	47,844.4	1,221.1	878.0
JUL	23,481.1	7,604.9	5,330.0	7,550.1	2,996.0	50,624.5	48,577.3	1,181.8	865.4
AUG	23,764.3	7,658.0	5,389.7	7,720.9	2,995.7	51,094.0	49,280.7	1,084.9	728.4
SEP	24,449.1	7,830.6	5,623.5	7,860.5	3,134.6	51,043.6	48,679.8	1,270.2	1,093.7
OCT	24,657.5	7,662.8	5,365.3	8,479.2	3,150.3	48,915.0	46,412.1	1,343.3	1,159.6
NOV	23,947.5	7,466.0	4,803.5	8,422.7	3,255.4	45,839.2	43,589.4	1,292.2	957.7
DEC	24,057.2	7,084.2	5,370.7	8,324.0	3,278.3	46,171.7	43,750.4	1,468.1	953.3
2006 JAN	23,942.9	7,066.9	5,145.7	8,440.3	3,290.0	45,972.2	43,533.6	1,470.3	968.2
FEB	23,859.6	6,896.0	5,054.3	8,598.6	3,310.7	46,016.5	43,571.0	1,490.3	955.2
MAR	23,946.8	7,107.9	4,856.6	8,657.0	3,325.2	46,734.0	44,174.7	1,600.0	959.3
APR	23,870.1	6,824.8	5,109.1	8,609.8	3,326.4	48,537.7	45,920.2	1,657.8	959.8
MAY	23,724.1	6,851.8	5,429.3	8,122.5	3,320.4	50,003.8	47,548.1	1,623.7	832.0
JUN	24,992.3	6,504.5	7,235.2	8,046.1	3,206.6	51,671.3	49,020.7	1,638.9	1,011.7
JUL	25,343.3	6,134.1	7,861.0	8,024.8	3,323.4	53,138.0	50,587.2	1,601.1	949.7
AUG	25,832.8	6,836.5	7,380.4	8,291.1	3,324.7	53,451.4	50,624.5	1,884.3	942.7
SEP	24,721.2	6,519.4	6,565.4	8,279.5	3,356.9	54,279.2	51,810.2	1,658.7	810.3
OCT	25,015.5	6,719.4	6,826.4	7,976.3	3,493.4	56,318.9	53,283.5	2,096.7	938.7
NOV	25,752.7	6,975.9	7,252.8	8,031.0	3,493.0	53,421.7	50,385.7	2,092.9	943.1
DEC	26,749.0	6,855.6	8,321.0	8,077.7	3,494.7	53,891.2	50,738.3	2,048.8	1,104.1
2007 JAN	26,969.8	6,776.8	8,465.8	8,228.0	3,499.3	55,923.4	52,824.4	2,004.4	1,094.6
FEB P	28,245.3	7,381.8	9,054.8	8,294.3	3,514.3	57,558.8	54,544.2	1,926.3	1,088.3

Table I.3B Banks: Assets of Domestic Banking Units (continued)

\$\$ MILLION

END OF PERIOD	TOTAL ASSETS			
	AMOUNTS DUE FROM BANKS			OTHER ASSETS
	TOTAL	IN SINGAPORE	OUTSIDE SINGAPORE	
	18=19+20	19	20*	21*
2002	96,807.4	17,434.6	79,372.8	25,847.4
2003	97,549.3	21,357.0	76,192.3	21,600.3
2004	113,856.1	32,615.8	81,240.3	28,898.6
2005	133,505.2	39,004.2	94,501.0	29,563.6
2006	184,163.2	51,554.4	132,608.8	38,775.1
2005 FEB	120,564.1	36,341.5	84,222.6	29,142.3
MAR	129,573.9	37,512.5	92,061.4	27,516.5
APR	122,286.1	35,198.4	87,087.7	27,823.1
MAY	123,027.1	39,972.5	83,054.6	28,412.1
JUN	123,818.5	41,613.1	82,205.4	28,850.4
JUL	125,487.9	40,884.7	84,603.2	27,154.8
AUG	128,671.4	39,145.1	89,526.3	29,675.7
SEP	127,775.1	33,482.1	94,293.0	29,265.4
OCT	133,227.9	34,780.8	98,447.1	28,595.2
NOV	136,606.0	38,874.2	97,731.7	30,299.6
DEC	133,505.2	39,004.2	94,501.0	29,563.6
2006 JAN	137,807.7	37,238.8	100,569.0	32,308.5
FEB	144,135.8	40,453.2	103,682.5	32,069.1
MAR	151,700.0	43,597.3	108,102.7	31,389.9
APR	150,543.8	49,452.0	101,091.7	37,576.4
MAY	158,855.8	47,823.5	111,032.3	36,531.4
JUN	151,436.2	42,362.6	109,073.6	35,688.8
JUL	162,078.0	46,421.1	115,656.9	36,607.3
AUG	159,827.4	39,329.6	120,497.8	35,950.2
SEP	163,106.9	38,270.9	124,836.0	34,074.5
OCT	163,959.1	38,720.4	125,238.8	34,565.5
NOV	176,533.3	44,092.4	132,440.9	37,192.1
DEC	184,163.2	51,554.4	132,608.8	38,775.1
2007 JAN	180,524.0	46,734.4	133,789.6	37,276.2
FEB P	188,679.7	52,692.6	135,987.1	40,216.1

Column 20 Includes Asian Currency Units

Column 21 From March 2004, the value of fixed assets is reported before depreciation.

Table I.3C Banks: Liabilities of Domestic Banking Units

S\$ MILLION

END OF PERIOD	TOTAL LIABILITIES	CAPITAL AND RESERVES	DEPOSITS OF NON-BANK CUSTOMERS					AMOUNTS DUE TO BANKS			OTHER LIABILITIES
			TOTAL	DEMAND DEPOSITS	FIXED DEPOSITS	SAVINGS DEPOSITS	OTHER DEPOSITS	TOTAL	IN SINGAPORE	OUTSIDE SINGAPORE	
	1=2+3+8+9+12	2	3*=4 to 7	4	5	6	7	8=9+10	9	10*	11*
2002	353,115.0	30,560.9	180,138.4	25,178.1	87,879.2	66,690.8	390.4	106,060.1	18,218.6	87,841.5	36,355.7
2003	362,528.4	32,724.5	194,231.5	27,902.2	95,729.2	69,861.3	738.8	103,559.0	15,201.7	88,357.3	32,013.5
2004	398,236.7	35,933.0	206,176.3	32,775.4	99,829.5	72,938.3	633.0	114,953.7	18,815.1	96,138.6	41,173.8
2005	425,222.5	38,161.7	223,718.0	35,140.1	118,496.4	69,306.2	775.4	120,849.1	23,010.9	97,838.3	42,493.7
2006	508,643.5	39,036.9 r	272,496.9 r	41,473.1 r	158,202.6	71,760.9	1,060.3	146,609.2	19,879.9	126,729.3	50,500.5 r
2005 FEB	405,640.0	40,265.4	206,300.4	31,454.9	100,594.7	73,571.0	679.8	115,856.6	22,692.1	93,164.5	43,217.7
MAR	412,842.9	40,447.8	210,769.5	34,046.2	103,077.8	72,928.3	717.2	120,974.8	22,481.5	98,493.2	40,650.9
APR	407,841.2	40,707.6	211,314.9	33,476.9	104,801.7	72,321.0	715.3	115,285.5	20,359.9	94,925.6	40,533.2
MAY	410,987.4	38,682.5	213,496.3	33,480.8	107,638.1	71,675.9	701.5	115,942.9	21,121.7	94,821.2	42,865.7
JUN	413,105.9	38,305.3	215,121.4	34,328.3	108,749.6	71,313.0	730.6	114,839.5	21,497.2	93,342.3	44,839.7
JUL	414,145.2	40,330.4	217,097.4	33,998.2	110,714.6	71,600.8	783.8	115,705.6	21,268.2	94,437.5	41,011.8
AUG	421,530.9	39,772.6	218,217.0	33,145.4	112,849.3	71,338.8	883.4	119,022.3	21,370.5	97,651.7	44,519.0
SEP	421,115.8	39,656.4	219,753.8	34,063.0	113,896.7	71,016.0	778.1	118,861.8	20,155.8	98,706.0	42,843.8
OCT	424,202.7	39,565.3	222,365.3	34,209.9	117,678.8	69,548.5	928.0	120,190.9	20,379.0	99,811.9	42,081.2
NOV	427,263.5	39,246.5	223,261.9	34,694.8	118,953.4	68,849.7	764.1	120,755.9	22,752.5	98,003.4	43,999.1
DEC	425,222.5	38,161.7	223,718.0	35,140.1	118,496.4	69,306.2	775.4	120,849.1	23,010.9	97,838.3	42,493.7
2006 JAN	432,649.4	40,263.2	221,638.2	33,959.7	118,273.4	68,621.7	783.4	124,325.5	22,098.0	102,227.5	46,422.6
FEB	438,400.8	40,248.7	227,653.4	34,652.6	123,378.2	68,753.2	869.5	123,694.1	22,111.0	101,583.1	46,804.6
MAR	444,829.9	40,480.9	231,428.4	36,618.6	124,753.9	69,080.7	975.2	128,489.1	23,597.8	104,891.3	44,431.6
APR	452,471.7	39,829.0	235,474.8	36,581.2	127,618.9	70,240.4	1,034.3	125,275.0	21,600.9	103,674.1	51,892.8
MAY	465,153.1	40,451.2	243,490.4	37,421.7	135,848.8	69,054.9	1,165.0	129,873.3	23,493.0	106,380.3	51,338.2
JUN	462,643.2	40,193.8	242,999.9	36,859.8	136,630.5	68,634.8	874.8	130,740.8	21,081.2	109,659.7	48,708.7
JUL	476,363.9	40,101.0	244,937.6	37,185.9	139,342.2	67,617.7	791.8	140,907.4	25,490.8	115,416.7	50,417.9
AUG	476,827.7	39,125.1	251,723.8	38,907.8	144,793.2	67,202.0	820.8	136,189.4	19,115.6	117,073.8	49,789.4
SEP	479,160.6	39,810.7	253,082.4	37,215.8	147,594.6	67,452.1	819.8	137,397.3	20,127.0	117,270.4	48,870.2
OCT	482,878.3	39,691.1	258,211.8	38,338.9	151,336.1	67,623.8	913.0	136,179.6	19,307.4	116,872.3	48,795.8
NOV	496,172.8 r	39,514.2	264,531.9 r	39,109.4 r	155,653.1	68,781.6	987.7	142,514.0	18,974.9	123,539.2	49,612.7
DEC	508,643.5	39,036.9 r	272,496.9 r	41,473.1 r	158,202.6	71,760.9	1,060.3	146,609.2	19,879.9	126,729.3	50,500.5 r
2007 JAN	506,892.8	41,738.9	276,181.6	42,738.9	159,355.9	72,947.9	1,138.9	137,445.3	18,736.4	118,708.9	51,527.1
FEB P	523,492.6	42,005.2	283,882.9	43,102.9	164,867.0	74,674.5	1,238.5	143,273.3	21,252.7	122,020.6	54,331.2

Column 3 Excludes non-bank customers' holdings of S\$NCDs.

Column 10 Includes Asian Currency Units.

Column 11 From March 2004, other liabilities include accumulated depreciation for fixed assets.



Table 1.4 Banks: Deposits (excluding S\$NCDs) of Domestic Banking Units By Types of Non-Bank customers

S\$ MILLION

END OF PERIOD	TOTAL DEPOSITS										
				SINGAPORE GOVERNMENT & STATUTORY BOARDS				DEPOSITS OF NON-BANK FINANCIAL INSTITUTIONS			
	TOTAL	IN S\$	IN FOREIGN CURRENCIES	TOTAL	DEMAND DEPOSITS	FIXED DEPOSITS	SAVINGS & OTHER DEPOSITS	TOTAL	DEMAND DEPOSITS	FIXED DEPOSITS	SAVINGS & OTHER DEPOSITS
	1=2+3	2	3	4=5+6+7	5	6	7	8=9+10+11	9	10	11
2002	180,138.4	178,691.8	1,446.5	11,728.8	1,785.7	9,938.1	4.9	16,593.2	2,645.8	13,946.9	0.5
2003	194,231.5	192,920.9	1,310.6	11,147.0	2,032.6	9,112.1	2.2	19,139.0	2,839.5	16,298.8	0.7
2004	206,176.3	204,305.4	1,870.8	12,719.8	1,955.2	10,747.9	16.7	21,644.3	5,421.9	16,155.9	66.5
2005	223,718.0	221,715.8	2,002.2	14,580.8	3,807.6	10,671.8	101.4	17,753.2	4,745.9	12,964.5	42.8
2006	272,496.9 r	270,401.4 r	2,095.5	21,202.1	3,700.2	17,357.9	144.0	27,833.7	5,972.4	21,847.9	13.4
2005 FEB	206,300.4	204,526.3	1,774.1	12,479.5	2,203.7	10,259.1	16.6	18,756.5	4,487.6	14,192.5	76.3
MAR	210,769.5	208,867.0	1,902.5	14,085.9	3,485.7	10,491.4	108.9	19,737.0	4,740.4	14,939.4	57.2
APR	211,314.9	209,479.2	1,835.7	13,803.7	2,772.9	10,912.3	118.5	19,670.8	4,723.6	14,862.1	85.2
MAY	213,496.3	211,767.3	1,729.1	14,317.2	2,018.6	12,179.2	119.4	20,521.3	5,093.2	15,382.7	45.3
JUN	215,121.4	212,472.3	2,649.1	13,780.0	2,896.8	10,781.7	101.5	20,477.3	5,004.1	15,408.7	64.5
JUL	217,097.4	215,331.5	1,765.9	13,966.9	2,669.2	11,184.7	112.9	19,426.0	4,758.2	14,636.5	31.2
AUG	218,217.0	216,550.7	1,666.3	14,336.2	2,291.7	11,922.7	121.9	21,416.7	4,878.5	16,501.1	37.0
SEP	219,753.8	218,141.4	1,612.4	14,147.8	2,372.9	11,662.2	112.6	20,188.6	5,107.0	15,047.9	33.8
OCT	222,365.3	220,683.3	1,682.0	14,666.5	2,025.9	12,527.3	113.3	19,884.6	5,063.1	14,594.5	226.9
NOV	223,261.9	221,296.5	1,965.4	15,678.1	2,506.5	13,063.6	108.0	19,144.2	4,957.0	14,159.4	27.7
DEC	223,718.0	221,715.8	2,002.2	14,580.8	3,807.6	10,671.8	101.4	17,753.2	4,745.9	12,964.5	42.8
2006 JAN	221,638.2	219,091.0	2,547.2	12,812.1	2,609.4	10,086.9	115.8	16,984.0	4,879.6	12,076.6	27.8
FEB	227,653.4	225,065.1	2,588.3	14,491.2	2,720.6	11,628.0	142.6	20,754.0	5,464.7	15,258.7	30.6
MAR	231,428.4	229,415.6	2,012.8	14,630.0	3,223.7	11,298.9	107.3	20,505.6	6,365.3	14,114.5	25.7
APR	235,474.8	233,381.8	2,093.0	14,529.6	2,924.3	11,469.8	135.5	20,098.2	5,876.3	14,202.9	19.1
MAY	243,490.4	241,545.8	1,944.6	15,054.6	2,763.9	12,158.2	132.5	23,944.1	6,418.5	17,465.4	60.2
JUN	242,999.9	241,309.3	1,690.6	14,919.8	3,020.9	11,806.9	92.0	23,398.7	5,694.1	17,688.8	15.9
JUL	244,937.6	243,147.4	1,790.1	15,053.5	3,063.0	11,899.5	91.0	23,292.1	5,901.8	17,325.3	65.0
AUG	251,723.8	249,924.4	1,799.4	15,966.3	3,140.1	12,692.3	133.9	26,934.6	6,951.7	19,901.2	81.7
SEP	253,082.4	251,237.8	1,844.5	15,301.2	2,205.4	12,956.4	139.4	27,280.1	5,751.9	21,503.8	24.3
OCT	258,211.8	256,268.5	1,943.3	16,723.3	2,375.5	14,234.6	113.3	27,581.1	5,815.8	21,745.6	19.6
NOV	264,531.9 r	262,344.4 r	2,187.5	18,314.0	2,374.6	15,812.1	127.3	27,459.1	6,198.2	21,248.0	13.0
DEC	272,496.9 r	270,401.4 r	2,095.5	21,202.1	3,700.2	17,357.9	144.0	27,833.7	5,972.4	21,847.9	13.4
2007 JAN	276,181.6	274,111.6	2,070.0	19,120.4	2,802.4	16,175.5	142.5	29,255.5	7,657.6	21,582.9	15.0
FEB P	283,882.9	281,438.2	2,444.7	20,001.7	2,996.6	16,893.3	111.7	30,101.4	7,383.4	22,687.7	30.3

Table I.4 Banks: Deposits (excluding S\$NCDs) of Domestic Banking Units by Types of Non-bank Customers (continued)

S\$ MILLION

END OF PERIOD	DEPOSITS OF OTHER RESIDENTS IN SINGAPORE				DEPOSITS OF RESIDENTS OUTSIDE SINGAPORE			
	TOTAL	DEMAND DEPOSITS	FIXED DEPOSITS	SAVINGS & OTHER DEPOSITS	TOTAL	DEMAND DEPOSITS	FIXED DEPOSITS	SAVINGS & OTHER DEPOSITS
	12=13+14+15	13	14	15	16 = 17+18+19	17	18	19
2002	141,168.3	19,525.8	58,990.6	62,651.9	10,648.1	1,220.7	5,003.5	4,423.8
2003	153,229.3	21,692.4	65,427.9	66,108.9	10,716.3	1,337.7	4,890.3	4,488.2
2004	160,251.7	23,835.5	67,545.3	68,870.9	11,560.5	1,562.8	5,380.5	4,617.2
2005	175,550.4	24,774.7	85,257.7	65,518.0	15,833.5	1,811.9	9,602.3	4,419.3
2006	200,985.3	28,954.9	103,790.3	68,240.1	22,475.7	2,845.7	15,206.4	4,423.6
2005 FEB	162,847.2	23,095.6	70,201.8	69,549.8	12,217.3	1,667.9	5,941.3	4,608.1
MAR	164,762.2	24,189.6	71,656.7	68,915.8	12,184.4	1,630.5	5,990.3	4,563.6
APR	165,369.9	24,298.6	72,759.1	68,312.2	12,470.5	1,681.8	6,268.3	4,520.4
MAY	164,735.7	24,612.8	72,469.7	67,653.2	13,922.2	1,756.2	7,606.5	4,559.4
JUN	166,903.8	24,516.3	75,039.5	67,348.0	13,960.3	1,911.1	7,519.6	4,529.6
JUL	169,224.4	24,728.4	76,794.4	67,701.6	14,480.1	1,842.3	8,098.9	4,538.9
AUG	167,418.4	24,121.9	75,795.5	67,501.0	15,045.7	1,853.3	8,630.0	4,562.3
SEP	170,417.0	24,734.5	78,600.0	67,082.5	15,000.4	1,848.7	8,586.5	4,565.1
OCT	172,240.9	25,229.3	81,385.0	65,626.7	15,573.3	1,891.6	9,172.1	4,509.6
NOV	172,580.4	25,493.9	82,071.0	65,015.5	15,859.2	1,737.3	9,659.3	4,462.6
DEC	175,550.4	24,774.7	85,257.7	65,518.0	15,833.5	1,811.9	9,602.3	4,419.3
2006 JAN	175,181.0	24,400.4	85,883.2	64,897.4	16,661.1	2,070.4	10,226.6	4,364.1
FEB	175,872.4	24,622.0	86,180.4	65,070.0	16,535.9	1,845.3	10,311.1	4,379.4
MAR	179,606.6	24,936.9	89,110.8	65,559.0	16,686.2	2,092.7	10,229.7	4,363.8
APR	183,228.0	25,798.0	90,676.9	66,753.1	17,619.0	1,982.6	11,269.3	4,367.1
MAY	185,352.2	25,995.4	93,758.8	65,598.0	19,139.4	2,243.9	12,466.3	4,429.2
JUN	186,479.9	26,046.4	95,280.1	65,153.4	18,201.4	2,098.4	11,854.7	4,248.3
JUL	187,654.7	26,094.4	97,483.9	64,076.3	18,937.3	2,126.7	12,633.5	4,177.1
AUG	188,340.9	26,469.4	98,243.1	63,628.4	20,482.0	2,346.7	13,956.6	4,178.7
SEP	190,607.8	26,810.1	99,902.2	63,895.5	19,893.3	2,448.4	13,232.1	4,212.8
OCT	193,466.2	27,633.0	101,648.9	64,184.3	20,441.2	2,514.5	13,707.1	4,219.6
NOV	196,713.4	27,782.0	103,591.6	65,339.7	22,045.4	2,754.7	15,001.3	4,289.4
DEC	200,985.3	28,954.9	103,790.3	68,240.1	22,475.7	2,845.7	15,206.4	4,423.6
2007 JAN	204,850.9	29,437.1	105,999.3	69,414.4	22,954.8	2,841.8	15,598.1	4,514.9
FEB P	209,798.7	29,945.2	108,675.3	71,178.2	23,981.1	2,777.6	16,610.6	4,592.8

Table I.5A Banks: Loans and Advances of Domestic Banking Units to Non-bank Customers by Industrial Classification

\$\$ MILLION

END OF PERIOD	LOANS AND ADVANCES INCLUDING BILLS FINANCING										
	LOANS TO BUSINESSES										PROFESSIONAL AND PRIVATE INDIVIDUALS
	TOTAL	TOTAL	AGRICULTURE, MINING AND QUARRYING	MANUFACTURING	BUILDING AND CONSTRUCTION	GENERAL COMMERCE	TRANSPORT, STORAGE AND COMMUNICATION	BUSINESS SERVICES	FINANCIAL INSTITUTIONS	BUSINESS PURPOSES	
	1*=2+12	2*=2 TO 11	3	4	5*	6	7	8	9	10	11*
2002	161,283.4	88,930.3	162.1	10,819.2	23,863.0	16,887.2	4,554.7	n.a.	22,926.8	n.a.	9,717.3
2003	171,443.5	86,504.2	305.5	10,595.5	24,029.5	16,857.3	4,133.8	n.a.	21,633.8	n.a.	8,948.8
2004	179,088.6	89,908.3	212.5	9,796.9	23,548.8	18,893.8	3,956.8	3,001.8	22,136.9	2,278.7	6,082.1
2005	183,109.4	91,250.4	293.0	10,108.0	23,031.1	19,885.2	4,327.0	2,455.3	21,993.1	2,577.7	6,580.0
2006	194,597.6	101,156.5	325.9	10,863.0	26,345.5	20,059.3	6,183.1	3,408.4	23,805.6	2,221.0	7,944.7
2005 FEB	178,295.6	89,034.8	218.7	10,004.5	23,413.7	18,471.5	3,891.5	2,934.3	21,531.6	2,951.3	5,617.7
MAR	177,643.3	88,125.1	201.3	10,000.8	22,761.6	18,625.9	3,764.4	2,771.7	21,663.5	2,926.1	5,409.8
APR	177,580.4	87,783.5	196.3	9,947.8	23,004.9	18,963.5	3,747.7	2,792.8	20,839.4	2,903.0	5,388.1
MAY	179,269.1	89,039.6	217.4	10,057.5	23,145.0	19,403.1	3,778.1	2,643.4	20,802.9	2,821.3	6,170.9
JUN	179,320.8	88,857.8	246.8	10,140.1	22,995.1	19,606.9	3,941.7	2,796.7	20,623.9	2,779.9	5,726.7
JUL	179,467.4	88,779.1	283.2	10,034.9	22,232.2	19,481.1	4,126.3	2,543.2	20,917.2	2,757.6	5,403.4
AUG	180,193.3	89,372.1	285.4	10,323.3	23,311.0	19,770.1	4,138.6	2,277.6	20,946.7	2,711.2	5,608.2
SEP	180,450.6	89,423.5	348.0	9,991.3	22,852.3	19,975.0	4,226.1	2,347.2	20,738.7	2,968.1	5,976.8
OCT	180,278.9	89,008.4	228.8	10,140.4	22,336.2	19,973.4	4,212.8	2,443.0	20,838.2	2,937.8	5,897.8
NOV	181,797.4	90,251.9	312.3	10,244.2	22,441.4	19,876.3	4,340.3	2,501.5	20,910.7	2,937.8	6,687.4
DEC	183,109.4	91,250.4	293.0	10,108.0	23,031.1	19,885.2	4,327.0	2,455.3	21,993.1	2,577.7	6,580.0
2006 JAN	183,221.4	91,313.6	281.4	10,327.8	22,587.0	19,836.2	4,455.5	2,495.4	22,188.0	2,530.5	6,611.8
FEB	183,889.8	92,090.4	280.7	10,261.8	23,371.8	19,718.2	4,582.0	2,382.5	22,487.1	2,589.7	6,416.6
MAR	182,623.1	91,144.7	248.9	10,309.4	22,808.9	19,383.8	4,597.8	2,531.7	22,671.3	2,525.4	6,067.5
APR	183,275.7	91,868.0	339.5	10,416.2	23,134.3	19,401.8	4,507.4	2,668.8	22,976.2	2,475.2	5,948.6
MAY	187,568.9	96,089.3	247.5	10,804.0	25,209.7	19,582.1	4,638.1	2,538.3	24,095.5	2,401.2	6,572.9
JUN	189,601.2	97,898.7	191.7	10,659.0	25,234.0	20,315.3	5,328.5	2,702.0	24,538.3	2,372.9	6,557.0
JUL	190,416.4	98,247.9	249.7	10,563.2	25,925.1	20,385.5	5,241.7	2,876.0	23,558.9	2,365.8	7,082.0
AUG	192,996.2	100,825.5	319.8	11,220.0	26,963.6	20,280.1	5,239.1	3,258.4	24,055.0	2,330.1	7,159.4
SEP	193,968.8	101,660.0	326.3	11,074.7	26,377.2	20,584.9	6,343.3	3,633.8	23,601.6	2,281.5	7,436.7
OCT	194,004.4	101,329.3	330.9	10,960.4	26,666.1	20,297.8	6,150.6	3,438.7	23,965.9	2,229.2	7,289.7
NOV	194,744.2	101,752.0	337.3	10,838.4	26,775.9	19,918.3	6,318.4	3,422.1	23,628.5	2,214.1	8,299.0
DEC	194,597.6	101,156.5	325.9	10,863.0	26,345.5	20,059.3	6,183.1	3,408.4	23,805.6	2,221.0	7,944.7
2007 JAN	196,446.6	102,556.9	419.3	10,559.5	26,972.7	19,943.3	6,236.1	3,437.0	24,640.6	2,243.2	8,105.2
FEB	198,420.3	104,286.1	405.3	10,741.8	27,593.8	19,824.2	6,674.6	3,534.7	24,942.6	2,231.0	8,338.1

Notes : Prior to June 1999, data on bills financing include bills refinanced by the Monetary Authority of Singapore.

From March 2004, the industry categories have been refined according to the Singapore Standard Industrial Classification adopted by the Singapore Department of Statistics.

The industrial classification is by end-use of loans. If this classification is not possible, the borrower's main business activity will be used.

Column 1 Data prior to March 2004 include loans to Professional and Private Individuals (PPI). However, as there is no breakdown of the data into loans to PPI by business purposes and consumer loans prior to March 2004, the sum of columns 2 and 12 may not add up to the total in column 1.

Column 2 Prior to March 2004, data excludes loans to professional and private individuals for business purposes.

Column 5 Includes loans to building and building co-operative societies, building developers and real estate agents.

Column 11 Data prior to March 2004 includes that of business services.

Table I.5A Banks: Loans and Advances of Domestic Banking Units to Non-bank Customers by Industrial Classification (continued)

S\$ MILLION

END OF PERIOD	LOANS AND ADVANCES INCLUDING BILLS FINANCING					
	CONSUMER LOANS					
	TOTAL	HOUSING AND BRIDGING LOANS	PROFESSIONAL AND PRIVATE INDIVIDUALS			
			CAR LOANS	CREDIT CARDS	SHARE FINANCING	OTHERS
12* = 13 TO 17	13	14	15	16	17	
2002	44,623.6	44,623.6	n.a.	n.a.	n.a.	n.a.
2003	52,155.4	52,155.4	n.a.	n.a.	n.a.	n.a.
2004	89,180.2	58,887.1	12,552.2	3,541.1	367.9	13,831.9
2005	91,859.2	61,937.1	12,578.4	3,794.0	500.2	13,049.5
2006	93,441.2	63,270.9	12,377.9	4,175.8	901.1	12,715.5
2005 FEB	89,260.7	59,745.8	12,635.4	3,378.5	475.9	13,025.1
MAR	89,518.2	60,188.3	12,509.8	3,313.4	483.1	13,023.6
APR	89,796.8	60,278.7	12,598.1	3,322.9	490.9	13,106.2
MAY	90,229.4	60,579.1	12,565.3	3,386.2	474.6	13,224.2
JUN	90,463.1	60,759.9	12,602.4	3,473.1	463.1	13,164.6
JUL	90,688.4	60,956.2	12,633.0	3,390.8	463.7	13,244.7
AUG	90,821.1	61,089.9	12,619.7	3,428.6	489.2	13,193.7
SEP	91,027.2	61,234.4	12,612.8	3,495.7	510.9	13,173.4
OCT	91,270.4	61,488.3	12,562.4	3,535.6	501.4	13,182.7
NOV	91,545.5	61,692.7	12,572.2	3,644.4	485.3	13,150.9
DEC	91,859.2	61,937.1	12,578.4	3,794.0	500.2	13,049.5
2006 JAN	91,907.7	62,097.3	12,581.4	3,723.7	498.9	13,006.4
FEB	91,799.5	62,133.1	12,522.3	3,650.1	486.4	13,007.6
MAR	91,478.5	62,038.8	12,464.8	3,617.3	475.8	12,881.8
APR	91,407.4	61,921.3	12,470.0	3,654.2	502.1	12,859.8
MAY	91,479.6	61,896.3	12,467.9	3,710.1	501.1	12,904.2
JUN	91,702.7	62,064.0	12,475.3	3,786.5	481.3	12,895.6
JUL	92,168.4	62,324.0	12,477.2	3,737.4	734.8	12,895.0
AUG	92,170.7	62,448.5	12,440.5	3,739.7	722.8	12,819.2
SEP	92,308.8	62,566.4	12,407.2	3,836.1	721.3	12,777.8
OCT	92,675.3	62,794.0	12,382.2	3,909.3	819.6	12,770.2
NOV	92,992.3	63,023.7	12,348.0	4,017.1	861.3	12,742.2
DEC	93,441.2	63,270.9	12,377.9	4,175.8	901.1	12,715.5
2007 JAN	93,889.8	63,676.8	12,391.5	4,044.6	991.4	12,785.5
FEB P	94,134.3	63,819.3	12,429.4	4,025.4	1,004.5	12,855.7

Notes : Prior to June 1999, data on bills financing include bills refinanced by the Monetary Authority of Singapore. From March 2004, the industry categories have been refined according to the Singapore Standard Industrial Classification adopted by the Singapore Department of Statistics. The industrial classification is by end-use of loans. If this classification is not possible, the borrower's main business activity will be used.

Column 12 Data prior to March 2004 refer to Housing and Bridging Loans only.

Table I.5B Banks: Loans and Advances of Asian Currency Units to Non-bank Customers by Industrial Classification

\$S MILLION

END OF PERIOD	LOANS AND ADVANCES INCLUDING BILLS FINANCING											
	LOANS TO BUSINESSES										PROFESSIONAL AND PRIVATE INDIVIDUALS	
	TOTAL	TOTAL	AGRICULTURE, MINING AND QUARRYING	MANUFACTURING	BUILDING AND CONSTRUCTION	GENERAL COMMERCE	TRANSPORT, STORAGE AND COMMUNICATION	BUSINESS SERVICES	FINANCIAL INSTITUTIONS	BUSINESS PURPOSES		OTHERS
	1=2+12	2=2 TO 11	3	4	5	6	7	8	9	10		11
2004	133,733.3	118,680.8	2,585.1	18,887.9	5,564.5	12,452.7	19,604.7	2,151.5	40,314.7	1,884.9	15,234.8	
2005	174,039.7	156,275.5	2,418.1	21,724.3	6,513.4	15,452.4	21,832.7	2,169.2	70,643.2	1,149.7	14,372.5	
2006	185,623.0	167,947.1	3,585.9	25,700.3	7,220.2	15,533.0	29,286.5	3,536.3	66,141.8	939.2	16,003.9	
2005 FEB	134,057.2	118,471.2	2,420.7	18,952.2	5,544.3	12,410.3	19,087.7	2,118.2	42,100.6	1,785.4	14,051.8	
MAR	134,004.3	117,694.5	2,444.7	19,342.5	5,719.5	13,113.9	19,616.6	2,034.4	39,333.3	1,876.0	14,213.6	
APR	138,662.2	121,802.0	2,608.4	19,901.9	6,447.6	13,655.2	19,659.6	2,070.6	41,452.0	1,872.4	14,134.3	
MAY	139,811.9	122,656.4	2,362.7	19,106.2	6,193.3	14,527.7	19,991.4	2,387.5	41,946.9	2,015.7	14,125.0	
JUN	143,970.2	126,736.9	2,154.5	20,874.2	6,519.5	14,716.6	21,483.6	2,395.4	42,256.9	2,027.4	14,308.8	
JUL	142,694.3	126,644.7	2,109.9	20,630.7	6,371.3	15,340.3	21,117.7	2,274.7	42,735.4	1,982.6	14,082.1	
AUG	148,773.8	132,166.0	2,131.4	21,665.8	6,798.9	15,661.9	21,625.2	2,165.6	44,888.5	2,045.2	15,183.5	
SEP	151,523.2	134,561.8	2,225.3	22,721.5	6,873.5	15,664.3	22,066.4	2,393.0	45,477.3	2,067.9	15,072.6	
OCT	152,108.0	134,910.2	2,668.4	22,813.4	6,866.9	16,443.4	22,139.1	2,507.9	44,836.8	1,884.2	14,750.1	
NOV	171,174.3	153,093.4	2,367.7	22,844.1	6,757.3	15,481.1	21,491.0	2,339.7	66,469.3	1,046.8	14,296.4	
DEC	174,039.7	156,275.5	2,418.1	21,724.3	6,513.4	15,452.4	21,832.7	2,169.2	70,643.2	1,149.7	14,372.5	
2006 JAN	170,390.7	153,063.5	2,516.6	21,967.2	6,656.7	14,713.7	21,920.7	2,352.1	68,289.2	1,076.8	13,570.5	
FEB	171,815.6	154,225.5	2,599.2	21,433.4	6,882.4	14,622.5	22,170.9	2,316.6	70,266.1	1,018.4	12,916.0	
MAR	163,870.3	146,231.6	3,327.4	21,852.0	6,791.5	13,999.2	22,317.3	2,063.5	62,643.0	1,018.4	12,219.3	
APR	175,431.1	157,767.2	3,310.9	21,944.1	7,163.7	14,815.6	22,866.7	2,080.3	72,626.3	1,027.4	11,932.2	
MAY	179,048.4	160,578.9	3,222.9	22,051.7	7,623.9	14,169.6	28,112.6	2,134.1	70,251.4	1,116.9	11,895.8	
JUN	180,255.9	162,038.0	2,934.1	22,821.1	7,605.2	14,027.5	27,667.9	2,001.3	71,008.6	1,106.0	12,866.3	
JUL	182,375.5	164,713.1	3,067.0	22,918.8	7,406.7	14,374.1	28,331.6	2,572.9	72,467.2	1,045.9	12,528.9	
AUG	180,185.0	162,489.9	2,895.5	22,878.3	7,538.9	14,363.2	28,971.3	2,655.2	68,993.5	991.6	13,202.4	
SEP	183,324.3	165,431.2	3,021.5	23,844.3	7,314.2	14,681.0	29,371.2	2,660.2	69,542.9	998.0	13,997.9	
OCT	186,362.1	169,125.8	3,473.0	25,665.1	7,505.5	14,562.0	29,021.4	2,676.6	71,615.2	932.9	13,674.1	
NOV	192,878.0	174,829.2	3,543.9	25,502.3	7,273.4	15,085.6	29,567.7	2,956.6	75,014.4	969.0	14,916.3	
DEC	185,623.0	167,947.1	3,585.9	25,700.3	7,220.2	15,533.0	29,286.5	3,536.3	66,141.8	939.2	16,003.9	
2007 JAN	187,362.0	169,947.3	3,476.4	26,781.2	7,050.2	15,481.4	29,775.6	3,512.9	67,135.3	882.4	15,851.9	
FEB P	192,052.5	174,176.1	3,541.9	27,347.5	7,177.3	15,856.0	30,349.2	3,655.9	68,656.1	889.2	16,703.0	

Notes : The industry categories are according to the Singapore Standard Industrial Classification adopted by the Singapore Department of Statistics. The industrial classification is by end-use of loans. If this classification is not possible, the borrower's main business activity will be used.

Table I.5B Banks: Loans and Advances of Asian Currency Units to Non-bank Customers by Industrial Classification (continued)

S\$ MILLION

END OF PERIOD	LOANS AND ADVANCES INCLUDING BILLS FINANCING					
	CONSUMER LOANS					
	TOTAL	HOUSING AND BRIDGING LOANS	PROFESSIONAL AND PRIVATE INDIVIDUALS			
			CAR LOANS	CREDIT CARDS	SHARE FINANCING	OTHERS
12= 13 TO 17	13	14	15	16	17	
2004	15,052.6	1,408.9	0.0	0.0	23.7	13,620.0
2005	17,764.3	1,442.2	0.0	0.0	13.9	16,308.2
2006	17,675.9	1,884.3	0.0	0.0	12.3	15,779.3
2005 FEB	15,586.0	1,446.3	0.0	0.0	23.0	14,116.7
MAR	16,309.8	1,438.1	0.0	0.0	19.1	14,852.6
APR	16,860.2	1,465.8	0.0	0.0	18.0	15,376.4
MAY	17,155.5	1,473.5	0.0	0.0	17.2	15,664.8
JUN	17,233.2	1,497.1	0.0	0.0	16.0	15,720.1
JUL	16,049.6	1,439.2	0.0	0.0	15.9	14,594.5
AUG	16,607.8	1,491.8	0.0	0.0	15.4	15,100.6
SEP	16,961.3	1,470.7	0.0	0.0	15.3	15,475.3
OCT	17,197.9	1,476.9	0.0	0.0	15.3	15,705.7
NOV	18,080.9	1,471.3	0.0	0.0	14.5	16,595.1
DEC	17,764.3	1,442.2	0.0	0.0	13.9	16,308.2
2006 JAN	17,327.4	1,487.7	0.0	0.0	13.5	15,826.2
FEB	17,590.2	1,490.9	0.0	0.0	12.8	16,086.5
MAR	17,638.8	1,511.6	0.0	0.0	11.4	16,115.8
APR	17,663.9	1,574.9	0.0	0.0	10.8	16,078.2
MAY	18,469.5	1,655.5	0.0	0.0	11.0	16,803.0
JUN	18,218.0	1,664.3	0.0	0.0	9.4	16,544.3
JUL	17,662.4	1,707.0	0.0	0.0	9.2	15,946.2
AUG	17,695.1	1,717.6	0.0	0.0	9.0	15,968.5
SEP	17,893.1	1,772.8	0.0	0.0	11.2	16,109.1
OCT	17,236.3	1,769.8	0.0	0.0	9.8	15,456.7
NOV	18,048.9	1,846.9	0.0	0.0	13.1	16,188.9
DEC	17,675.9	1,884.3	0.0	0.0	12.3	15,779.3
2007 JAN	17,414.7	1,852.5	0.0	0.0	13.2	15,549.0
FEB P	17,876.2	1,887.8	0.0	0.0	16.7	15,971.7

**Table I.6 Banks: Limits Granted and Percentage Utilised for Loans and Advances of Domestic Banking Units to Non-bank Customers by Industrial Classification**

END OF PERIOD	LOANS TO BUSINESSES											
	TOTAL		TOTAL		AGRICULTURE, MINING AND QUARRYING		MANUFACTURING		BUILDING AND CONSTRUCTION		GENERAL COMMERCE	
	LIMITS GRANTED	UTILISED	LIMITS GRANTED	UTILISED	LIMITS GRANTED	UTILISED	LIMITS GRANTED	UTILISED	LIMITS GRANTED	UTILISED	LIMITS GRANTED	UTILISED
	\$S\$M	%	\$S\$M	%	\$S\$M	%	\$S\$M	%	\$S\$M	%	\$S\$M	%
	1* = 3+21	2*	3* = 5+7+9+11+13+15+17+19	4*	5	6	7	8	9*	10*	11	12
2002	255,067.9	62.0	151,983.9	58.5	307.0	40.6	21,960.1	47.3	32,385.1	73.6	33,798.9	44.9
2003	264,522.9	63.3	144,526.9	59.9	259.6	40.1	20,880.4	48.9	31,570.4	76.1	33,058.1	44.9
2004	524,006.8	56.8	354,388.7	54.6	4,444.5	59.6	50,369.4	55.5	39,766.1	73.1	73,922.1	35.5
2005	613,413.3	55.7	423,853.1	54.7	3,947.3	67.8	56,906.9	54.4	40,785.2	72.3	88,494.1	34.0
2006	681,887.8	53.5	477,818.5	53.1	5,657.7	67.5	62,528.6	57.1	45,126.4	74.3	92,310.3	33.0
2005 FEB	530,982.0	56.2	356,887.3	54.2	4,042.1	62.6	50,988.0	54.9	39,640.8	73.0	73,062.0	35.9
MAR	540,228.8	54.9	365,277.5	52.3	4,140.6	60.2	52,435.6	54.2	39,267.5	72.5	77,183.2	34.7
APR	552,160.8	54.5	375,477.1	51.8	4,258.1	62.2	52,827.5	54.9	39,953.8	73.7	77,955.7	35.2
MAY	547,946.3	55.4	369,265.5	53.1	4,322.7	57.2	52,765.0	53.6	40,216.0	72.9	80,120.0	35.5
JUN	571,077.6	53.7	389,525.3	51.2	4,337.4	54.0	53,620.8	55.9	41,001.6	71.9	82,455.8	34.4
JUL	560,273.4	54.5	379,029.3	52.5	4,133.5	55.7	53,171.8	55.7	41,459.6	71.3	82,833.9	35.2
AUG	571,038.7	54.6	386,726.1	52.8	4,630.0	50.8	54,168.5	57.0	41,004.2	73.3	82,435.7	35.8
SEP	578,548.2	54.4	392,304.2	52.7	4,782.2	52.3	55,105.7	57.3	40,900.1	72.6	85,192.7	35.2
OCT	587,785.4	53.6	399,998.1	51.7	5,061.6	55.2	55,206.8	57.6	40,031.2	72.9	85,582.4	35.9
NOV	607,452.2	55.5	418,002.4	54.5	3,874.4	68.8	56,839.3	56.5	39,963.6	73.0	86,844.4	34.4
DEC	613,413.3	55.7	423,853.1	54.7	3,947.3	67.8	56,906.9	54.4	40,785.2	72.3	88,494.1	34.0
2006 JAN	602,840.1	56.3	414,231.9	55.5	3,907.0	71.3	55,616.9	56.5	40,239.7	72.5	85,935.9	34.6
FEB	606,806.2	56.2	415,673.8	55.8	3,989.1	71.7	55,350.0	55.3	40,628.9	74.3	85,485.8	34.9
MAR	610,827.1	54.4	418,417.9	53.3	4,959.4	71.2	55,556.2	55.8	41,026.8	72.0	86,829.4	33.1
APR	618,397.3	55.8	427,378.2	55.2	4,791.8	72.1	55,358.7	56.0	41,127.7	73.6	85,731.1	34.4
MAY	630,048.3	55.9	436,485.5	55.5	4,699.1	72.2	55,816.1	56.6	43,726.0	74.9	86,964.9	33.1
JUN	639,501.3	55.5	443,883.7	55.3	4,437.6	69.8	56,698.1	56.7	44,978.6	72.9	87,417.7	33.5
JUL	647,306.6	55.3	450,696.3	55.0	4,434.1	73.2	56,614.2	56.6	46,003.7	72.4	89,665.6	33.0
AUG	653,183.5	55.0	455,366.2	54.8	4,228.0	72.7	57,332.2	56.9	47,359.8	72.8	90,789.8	32.8
SEP	664,680.9	54.5	463,965.7	54.4	4,526.1	72.3	57,689.1	58.2	45,338.4	74.2	93,569.0	32.4
OCT	673,538.6	54.4	473,464.2	54.1	5,116.2	72.7	60,607.1	58.3	45,371.3	75.2	93,612.8	31.8
NOV	682,489.2	54.7	479,986.1	54.6	5,736.7	65.5	60,683.6	57.9	44,856.0	75.8	92,198.7	32.5
DEC	681,887.8	53.5	477,818.5	53.1	5,657.7	67.5	62,528.6	57.1	45,126.4	74.3	92,310.3	33.0
2007 JAN	692,375.2	53.4	487,655.3	53.0	5,672.9	65.5	63,347.1	57.8	46,632.4	72.9	93,818.8	32.5
FEB	703,720.8	53.4	495,761.2	53.2	5,911.0	64.3	62,847.7	59.1	47,980.7	72.3	94,882.9	32.4

Note: From March 2004, data for limits granted and percentage utilised include non-bank loans and advances of banks' Asian Currency Units.  
Columns 1 & 2 Data prior to March 2004 include loans to Professional and Private Individuals (PPI). However, as there is no breakdown of the data into loans to PPI by business purposes and consumer loans prior to March 2004, the sum of columns 3 and 21 may not add up to the total.  
Columns 3 & 4 Prior to March 2004, data exclude loans to Professional and Private Individuals for business purposes.  
Columns 9 & 10 Includes loans to building and building co-operative societies, building developers and real estate agents.

**Table 1.6 Banks: Limits Granted and Percentage Utilised for Loans and Advances of Domestic Banking Units to Non-bank Customers by Industrial Classification (continued)**

END OF PERIOD	LOANS TO BUSINESSES								LOANS TO CONSUMERS					
	TRANSPORT, STORAGE AND COMMUNICATION		BUSINESS SERVICES		FINANCIAL INSTITUTIONS		OTHERS		TOTAL		HOUSING AND BRIDGING LOANS		PROFESSIONAL AND PRIVATE INDIVIDUALS	
	LIMITS GRANTED	UTILISED	LIMITS GRANTED	UTILISED	LIMITS GRANTED	UTILISED	LIMITS GRANTED	UTILISED	LIMITS GRANTED	UTILISED	LIMITS GRANTED	UTILISED	LIMITS GRANTED	UTILISED
	\$S\$M	%	\$S\$M	%	\$S\$M	%	\$S\$M	%	\$S\$M	%	\$S\$M	%	\$S\$M	%
	13	14	15	16	17	18	19*	20*	21* = 23+25	22*	23	24	25	26
2002	10,209.2	44.3	n.a.	n.a.	34,854.8	63.9	18,468.8	51.8	49,511.8	90.1	49,511.8	90.1	n.a.	n.a.
2003	9,958.4	41.3	n.a.	n.a.	31,085.0	66.9	17,715.0	48.1	58,680.7	88.9	58,680.7	88.9	n.a.	n.a.
2004	36,594.2	64.2	9,575.8	52.4	102,426.0	58.7	37,290.6	50.7	169,618.2	61.4	67,860.0	88.9	101,758.2	43.1
2005	43,697.3	59.8	8,462.7	53.9	146,941.1	61.7	34,618.5	49.9	189,560.1	57.8	70,767.5	89.6	118,792.6	38.9
2006	55,821.8 r	63.2	11,534.1	57.7	156,245.2	56.0	48,594.4 r	43.2	204,069.3 r	54.4	73,675.3	88.4	130,393.9 r	35.2
2005 FEB	35,954.3	63.7	9,435.1	52.1	106,293.2	58.1	37,471.8	48.1	174,094.7	60.2	68,451.8	89.4	105,642.9	41.3
MAR	36,147.2	64.5	9,395.0	49.2	109,496.6	54.2	37,211.7	47.1	174,951.3	60.5	68,793.2	89.6	106,158.1	41.6
APR	36,127.4	64.6	9,137.9	51.6	118,345.5	51.2	36,871.2	47.0	176,683.7	60.3	68,796.0	89.8	107,887.8	41.6
MAY	36,919.4	64.3	9,550.1	51.3	109,018.3	56.1	36,354.0	49.1	178,680.8	60.1	68,785.8	90.2	109,895.1	41.2
JUN	39,044.2	65.0	11,368.1	44.3	118,221.6	52.0	39,475.9	43.6	181,552.3	59.3	69,719.6	89.3	111,832.7	40.6
JUL	38,443.7	65.6	10,298.8	45.4	112,521.8	55.1	36,166.2	45.2	181,244.1	58.9	69,282.5	90.1	111,961.6	39.6
AUG	41,120.8	62.6	9,986.7	43.8	116,411.2	55.0	36,969.1	46.8	184,312.7	58.2	69,590.9	89.9	114,721.8	39.0
SEP	41,824.7	62.8	8,494.7	55.1	117,975.6	54.4	38,028.4	47.3	186,244.0	57.9	70,191.4	89.3	116,052.7	38.9
OCT	42,265.3	62.3	8,992.5	54.5	123,981.9	51.4	38,876.4	45.2	187,787.3	57.7	70,336.9	89.5	117,450.3	38.7
NOV	42,606.9	60.6	9,161.6	52.2	143,897.1	59.4	34,815.1	51.0	189,449.8	57.8	70,447.7	89.7	119,002.1	39.0
DEC	43,697.3	59.8	8,462.7	53.9	146,941.1	61.7	34,618.5	49.9	189,560.1	57.8	70,767.5	89.6	118,792.6	38.9
2006 JAN	43,571.7	60.5	8,894.7	53.8	142,396.5	62.1	33,669.5	51.3	188,608.2	57.9	70,809.1	89.8	117,799.1	38.7
FEB	43,871.9	60.9	8,709.5	53.0	144,463.8	62.6	33,174.8	50.3	191,132.4	57.2	70,992.1	89.6	120,140.3	38.1
MAR	45,248.3	59.4	9,042.7	49.6	141,366.7	58.5	34,388.5	47.7	192,409.1	56.7	71,234.3	89.2	121,174.9	37.6
APR	43,358.1	63.0	8,950.4	51.7	153,394.5	61.0	34,665.9	46.5	191,019.0	57.1	71,104.3	89.3	119,914.7	38.0
MAY	49,833.3	65.6	8,466.3	53.4	152,335.2	60.5	34,644.6	47.5	193,562.8	56.8	71,387.7	89.0	122,175.1	37.9
JUN	50,465.0 r	65.2	8,589.4	52.6	155,252.1	60.1	36,045.1	47.6	195,617.7	56.2	71,673.5	88.9	123,944.2	37.2
JUL	51,245.8 r	65.3	9,433.9	55.7	155,753.3	60.1	37,545.6	47.0	196,610.3	55.8	71,939.0	89.0	124,671.3	36.7
AUG	52,554.4 r	64.9	9,921.5	57.6	153,931.6	59.3	39,249.0	46.7	197,817.3	55.5	72,192.6	88.9	125,624.7	36.4
SEP	54,555.1	65.2	10,683.0	56.7	155,805.9	58.5	41,799.0	44.9	200,715.2	54.9	72,629.1	88.6	128,086.1	35.8
OCT	54,362.9	64.4	10,611.2	55.2	159,398.1	58.7	44,384.6 r	42.4 r	200,074.4 r	54.9 r	72,680.1	88.8	127,394.2 r	35.6 r
NOV	55,456.3	64.4	10,689.1	57.1	163,087.2	59.2	47,278.6 r	44.0	202,503.1	54.8	73,112.6	88.7	129,390.5 r	35.7 r
DEC	55,821.8 r	63.2	11,534.1	57.7	156,245.2	56.0	48,594.4 r	43.2	204,069.3 r	54.4	73,675.3	88.4	130,393.9 r	35.2
2007 JAN	57,013.6	62.8	11,372.0	58.7	157,879.5	56.7	51,919.1	41.6	204,719.9	54.4	73,997.4	88.6	130,722.6	35.0
FEB P	58,115.8	63.3	12,057.2	57.4	161,793.6	56.6	52,172.3	42.8	207,959.5	53.9	74,699.9	88.0	133,259.6	34.7

Columns 19 & 20 Data from March 2004 includes loans to Professional and Private Individuals for business purposes.  
Columns 21 & 22 Data prior to March 2004 refer to Housing and Bridging Loans only.



Table 1.7 Banks: Types of Loans and Advances of Domestic Banking Units to Non-bank Customers

S\$ MILLION

END OF PERIOD	LOANS AND ADVANCES TO NON-BANK CUSTOMERS				
	TOTAL	BILLS FINANCING	OVERDRAFTS	TRUST RECEIPTS	OTHER LOANS AND ADVANCES
	1=2 TO 5	2*	3	4	5
2002	161,283.4	3,047.7	20,001.1	4,179.1	134,055.6
2003	171,443.5	3,889.2	16,829.1	3,995.2	146,730.0
2004	179,088.6	5,544.8	13,562.9	4,649.5	155,331.4
2005	183,109.4	5,308.1	11,790.0	5,095.7	160,915.6
2006	194,597.6	6,160.2	10,781.5	5,407.2	172,248.7
2005 FEB	178,295.6	5,026.6	13,506.1	4,533.0	155,230.0
MAR	177,643.3	5,220.6	13,052.1	4,579.8	154,790.7
APR	177,580.4	5,367.7	12,957.2	4,662.2	154,593.3
MAY	179,269.1	5,670.0	12,780.7	5,027.0	155,791.4
JUN	179,320.8	6,102.8	13,116.0	5,088.2	155,013.9
JUL	179,467.4	6,096.8	12,938.1	4,928.7	155,503.8
AUG	180,193.3	6,111.4	12,334.6	5,031.8	156,715.6
SEP	180,450.6	5,901.5	12,075.1	5,014.9	157,459.1
OCT	180,278.9	5,778.2	12,345.7	5,040.5	157,114.5
NOV	181,797.4	5,568.8	11,911.4	5,037.6	159,279.6
DEC	183,109.4	5,308.1	11,790.0	5,095.7	160,915.6
2006 JAN	183,221.4	5,605.0	11,845.4	5,091.8	160,679.3
FEB	183,889.8	5,601.2	11,830.6	5,087.8	161,370.3
MAR	182,623.1	5,633.4	11,606.2	5,004.7	160,378.8
APR	183,275.7	5,738.0	11,690.6	4,854.3	160,992.8
MAY	187,568.9	6,059.2	11,594.8	4,842.6	165,072.2
JUN	189,601.2	6,627.7	11,413.4	5,239.6	166,320.5
JUL	190,416.4	6,330.4	11,314.8	5,159.4	167,611.8
AUG	192,996.2	6,437.4	11,417.0	5,397.3	169,744.5
SEP	193,968.8	6,314.0	10,997.0	5,884.3	170,773.5
OCT	194,004.4	6,250.8	11,009.7	5,660.8	171,083.1
NOV	194,744.2	6,342.8	11,034.0	5,487.0	171,880.4
DEC	194,597.6	6,160.2	10,781.5	5,407.2	172,248.7
2007 JAN	196,446.6	6,182.9	10,771.9	5,400.6	174,091.2
FEB P	198,420.3	6,598.4	10,758.0	5,344.6	175,719.3

Column 2

Prior to June 1999, data on bills financing include bills refinanced by the Monetary Authority of Singapore.

Table I.8 Banks: Statutory Liquidity Position of Domestic Banking Units

AS AT	LIABILITIES	STATUTORY	LIQUIDITY	BALANCES
	BASE	LIQUID	RATIO	WITH
		ASSETS		MAS
	S\$ MILLION		PER CENT	S\$ MILLION
	1	2	3	4
2002	188,609.3	41,510.7	22.0	6,462.8
2003	197,721.2	45,435.7	23.0	6,592.0
2004	209,773.1	45,425.6	21.7	6,775.0
2005	225,133.0	43,596.1	19.4	7,466.1
2006	262,876.3	49,877.4	19.0	8,802.0
2005 FEB	209,400.9	45,532.5	21.7	6,779.2
MAR	212,937.3	46,025.4	21.6	6,895.4
APR	213,321.1	48,121.3	22.6	7,193.1
MAY	211,579.9	47,471.4	22.4	7,062.8
JUN	213,481.4	47,137.8	22.1	7,181.4
JUL	215,337.2	47,327.3	22.0	6,777.8
AUG	217,163.8	48,409.8	22.3	6,981.4
SEP	222,197.8	47,806.6	21.5	7,057.0
OCT	221,885.1	46,216.3	20.8	7,109.7
NOV	224,995.1	42,776.5	19.0	7,611.1
DEC	225,133.0	43,596.1	19.4	7,466.1
2006 JAN	223,234.0	42,952.2	19.2	7,508.4
FEB	225,944.7	42,509.2	18.8	7,171.4
MAR	229,001.4	43,019.5	18.8	7,327.9
APR	228,507.0	44,019.3	19.3	7,299.5
MAY	237,252.5	44,729.6	18.9	7,286.9
JUN	242,331.5	46,545.7	19.2	7,896.2
JUL	243,995.8	46,038.4	18.9	7,518.2
AUG	247,509.8	47,589.6	19.2	7,606.5
SEP	252,397.5	49,178.7	19.5	7,812.7
OCT	257,531.0	50,673.8	19.7	7,721.3
NOV	258,628.3	48,760.4	18.9	7,361.3
DEC	262,876.3	49,877.4	19.0	8,802.0
2007 JAN	268,170.3	50,650.7	18.9	8,147.6
FEB P	272,358.8	51,207.7	18.8	8,545.8

Note : Data for liquid assets and liquidity ratios are as at the last day of the month while data for liabilities base are the average of the daily eligible liabilities for a two-week liabilities base period beginning on a Thursday and ending on a Wednesday.

Table I.9 Banks: Domestic Banking Units External Assets and Liabilities

END OF PERIOD	ASSETS							LIABILITIES					NET
	TOTAL	FOREIGN NOTES AND COINS	AMOUNTS DUE FROM BANKS	LOANS AND ADVANCES TO NON-BANK CUSTOMERS	BILLS DISCOUNTED OR PURCHASED	SECURITIES AND EQUITIES	OTHER FOREIGN ASSETS	TOTAL	DEPOSITS OF NON-BANK CUSTOMERS	AMOUNTS DUE TO BANKS	BILLS PAYABLE	OTHER FOREIGN LIABILITIES	FOREIGN ASSETS/ LIABILITIES (-)
		1=2 to 7	2	3*	4	5*	6		7	8=9 to 12	9	10*	11
2002	92,948.6	73.2	79,372.8	4,192.2	1,340.0	5,619.7	2,350.7	101,214.7	10,648.1	87,841.5	8.1	2,717.0	-8,266.1
2003	89,891.8	19.1	76,192.3	4,058.8	1,824.4	5,884.7	1,912.5	101,776.4	10,716.3	88,357.3	8.7	2,694.1	-11,884.6
2004	101,048.1	17.9	81,240.3	4,940.9	3,139.0	8,040.8	3,669.2	110,602.3	11,560.5	96,138.6	15.8	2,887.4	-9,554.2
2005	117,688.1	20.4	94,501.0	6,954.6	3,233.3	9,602.2	3,376.6	115,768.0	15,833.5	97,838.3	24.2	2,072.0	1,920.1
2006	168,533.0	27.7	132,608.8	9,009.2	3,506.9	12,919.8	10,460.6	151,650.2 r	22,475.7	126,729.3	10.8	2,434.4 r	16,882.8 r
2005 FEB	103,643.4	17.6	84,222.6	5,022.1	2,871.3	7,585.0	3,924.8	108,975.4	12,217.3	93,164.5	12.0	3,581.6	-5,332.0
MAR	110,933.9	18.4	92,061.4	5,014.3	2,893.0	7,728.4	3,218.4	114,090.2	12,184.4	98,493.2	11.8	3,400.8	-3,156.3
APR	106,477.4	17.9	87,087.7	5,175.6	3,069.0	7,707.8	3,419.4	110,852.6	12,470.5	94,925.6	12.8	3,443.7	-4,375.2
MAY	102,413.4	19.8	83,054.6	5,139.6	3,521.5	7,884.6	2,793.3	112,118.4	13,922.2	94,821.2	23.1	3,351.9	-9,705.0
JUN	102,298.9	17.9	82,205.4	5,285.3	3,645.3	8,305.7	2,839.3	110,929.8	13,960.3	93,342.3	14.0	3,613.2	-8,630.9
JUL	105,959.8	18.5	84,603.2	5,404.0	3,688.1	9,191.4	3,054.6	112,754.3	14,480.1	94,437.5	11.3	3,825.4	-6,794.5
AUG	111,562.6	18.8	89,526.3	5,826.2	3,810.8	9,113.8	3,266.7	117,405.6	15,045.7	97,651.7	12.7	4,695.5	-5,843.0
SEP	116,996.6	18.6	94,293.0	5,864.5	3,621.5	9,851.7	3,347.3	118,361.3	15,000.4	98,706.0	12.6	4,642.3	-1,364.7
OCT	120,834.1	18.5	98,447.1	6,056.0	3,517.7	9,675.1	3,119.7	119,371.3	15,573.3	99,811.9	12.0	3,974.1	1,462.8
NOV	119,772.9	19.1	97,731.7	6,198.4	3,513.5	9,016.5	3,293.7	117,764.7	15,859.2	98,003.4	12.1	3,890.0	2,008.2
DEC	117,688.1	20.4	94,501.0	6,954.6	3,233.3	9,602.2	3,376.6	115,768.0	15,833.5	97,838.3	24.2	2,072.0	1,920.1
2006 JAN	125,467.8	21.7	100,569.0	6,967.0	3,371.5	9,403.9	5,134.7	122,097.8	16,661.1	102,227.5	21.5	3,187.7	3,370.0
FEB	129,088.7	34.3	103,682.5	7,498.9	3,583.9	9,320.2	4,968.9	121,299.7	16,535.9	101,583.1	10.1	3,170.6	7,789.0
MAR	133,174.0	22.6	108,102.7	7,325.0	3,559.2	9,141.2	5,023.3	124,716.8	16,686.2	104,891.3	12.3	3,127.0	8,457.2
APR	129,167.4	22.1	101,091.7	7,495.3	3,372.1	9,395.2	7,791.0	125,429.9	17,619.0	103,674.1	12.7	4,124.1	3,737.5
MAY	140,220.2	24.6	111,032.3	7,929.4	3,319.1	9,581.8	8,333.0	129,946.0	19,139.4	106,380.3	11.0	4,415.3	10,274.2
JUN	141,003.3	26.0	109,073.6	8,612.3	3,741.9	11,453.5	8,096.0	131,781.7	18,201.4	109,659.7	14.9	3,905.7	9,221.6
JUL	149,499.9	25.9	115,656.9	9,165.8	3,686.4	12,134.1	8,830.8	138,362.7	18,937.3	115,416.7	14.2	3,994.5	11,137.2
AUG	154,351.9	23.6	120,497.8	9,479.4	3,752.7	11,647.8	8,950.6	141,749.6	20,482.0	117,073.8	10.8	4,183.0	12,602.3
SEP	156,239.7	33.7	124,836.0	9,210.0	3,858.1	10,732.7	7,569.2	140,536.0	19,893.3	117,270.4	10.2	3,362.1	15,703.7
OCT	157,948.5	27.9	125,238.8	9,382.0	3,686.5	11,258.5	8,354.8	140,372.9	20,441.2	116,872.3	10.0	3,049.4	17,575.6
NOV	167,545.5	29.3	132,440.9	9,297.4	3,838.3	11,688.9	10,250.7	149,028.8	22,045.4	123,539.2	9.9	3,434.3	18,516.7
DEC	168,533.0	27.7	132,608.8	9,009.2	3,506.9	12,919.8	10,460.6	151,650.2 r	22,475.7	126,729.3	10.8	2,434.4 r	16,882.8 r
2007 JAN	169,810.2	26.0	133,789.6	9,433.2	3,612.1	13,059.7	9,889.6	144,086.1	22,954.8	118,708.9	10.4	2,412.0	25,724.1
FEB P	174,869.3	30.3	135,987.1	9,950.6	3,833.1	13,657.4	11,410.8	148,663.1	23,981.1	122,020.6	15.5	2,645.9	26,206.2

Columns 3 & 10

Includes Asian Currency Units.

Column 5

Prior to Jun 99, data on bills financing include bills refinanced by the Monetary Authority of Singapore.

Column 12

Includes reserves and profit and loss accounts of foreign incorporated banks operating in Singapore.

Table I.10 Banks: Combined Assets and Liabilities of Domestic Banking Units (DBUs) and Asian Currency Units (ACUs)<sup>1/</sup>

\$\$ MILLION

END OF PERIOD	ASSETS / LIABILITIES OF DBUs AND ACUs					
	LOCAL BANKS	OF WHICH EXTERNAL		FOREIGN BANKS	OF WHICH EXTERNAL	
		ASSETS	LIABILITIES		ASSETS	LIABILITIES
	1	2	3	4	5	6
2002	252,884.8	72,769.4	45,852.9	784,505.3	615,384.5	614,561.2
2003	263,962.4	76,997.6	47,394.0	806,993.0	628,126.2	618,767.1
2004	305,091.3	99,921.1	59,477.5	873,508.4	678,397.3	674,087.5
2005	313,567.0	109,560.0	54,736.3	948,827.4	741,239.9	737,262.2 r
2006	354,740.7	127,903.2 r	64,189.3	1,008,905.7	755,761.7	744,031.6 r
2005 FEB	311,626.6	105,540.7	61,801.0	827,061.0	630,801.4	624,093.1
MAR	310,732.1	105,207.2	58,760.5	856,597.6	661,983.0	650,831.2
APR	313,996.6	108,081.1	61,141.1	841,717.6	646,752.3	636,733.2
MAY	314,194.8	104,596.9	58,889.8	859,002.9	660,700.9	650,266.4
JUN	318,202.4	105,993.7	63,773.2	873,666.5	673,064.3	668,136.3
JUL	311,958.8	105,428.5	59,377.0	885,794.9	679,571.4	676,745.9
AUG	314,572.9	108,605.9	60,030.3	907,774.8	696,750.5	693,790.9
SEP	313,876.8	110,309.7	60,482.3	914,032.9	706,392.1	701,211.5
OCT	313,426.1	110,145.6	59,806.5	934,203.7	727,461.8	715,678.0
NOV	314,824.4	112,064.6	59,425.1	951,687.2	737,328.1	725,373.8
DEC	313,567.0	109,560.0	54,736.3	948,827.4	741,239.9	737,262.2 r
2006 JAN	314,368.5	114,904.1	57,302.8	917,433.8	707,652.0	703,153.5
FEB	319,098.9	116,229.1	59,003.9	911,626.8	702,047.9	689,892.1
MAR	323,502.7	119,509.9	60,245.6	916,418.6	702,715.8	691,245.8
APR	333,944.4	125,147.7	66,641.0	956,871.0	733,570.2	720,025.9 r
MAY	337,246.0	126,823.9	66,843.0	968,963.4	741,805.5	726,639.9 r
JUN	335,415.0	124,961.6	67,185.9	970,172.4	745,801.0	731,017.9 r
JUL	342,363.8	128,019.5	67,189.6	983,832.3	756,214.3	743,662.5
AUG	343,547.1	128,883.3	66,671.8	987,665.2	762,400.2	747,106.0
SEP	342,571.7	130,198.4	65,284.7	980,112.0	752,059.4	738,894.7 r
OCT	344,161.5	131,049.0	65,208.7	986,995.8	751,534.8	738,810.2 r
NOV	349,108.5 r	131,850.2	62,896.8	1,008,022.2	754,944.4	744,501.1 r
DEC	354,740.7	127,903.2 r	64,189.3	1,008,905.7	755,761.7	744,031.6 r
2007 JAN	356,554.4	131,004.1	62,961.8	1,015,583.0	760,784.8	745,002.1
FEB P	365,071.2	131,921.2	64,996.6	1,030,809.3	767,116.8	748,957.1

Note : ACUs are treated as resident units in this table.

<sup>1/</sup> Combined assets/liabilities of DBUs and ACUs excluding inter-unit transactions.

Table I.11 Asian Dollar Market: Assets of Asian Currency Units

US \$ MILLION

END OF PERIOD	TOTAL ASSETS 1=2+3+7+8	LOANS TO NON-BANK CUSTOMERS 2	INTERBANK FUNDS				DEBT SECURITIES AND EQUITIES 7	OTHER ASSETS 8
			TOTAL 3=4+5+6	IN SINGAPORE 4	INTER-ASIAN CURRENCY UNITS 5	OUTSIDE SINGAPORE 6		
2002	482,612.3	77,906.3	335,973.6	35,599.0	31,415.4	268,959.3	48,565.4	20,167.1
2003	509,145.9	83,602.8	341,917.7	37,151.2	29,360.2	275,406.3	58,725.2	24,900.1
2004	581,562.5	93,494.2	385,302.2	43,932.1	31,428.3	309,941.8	72,570.9	30,195.2
2005	611,377.3	120,865.5	389,485.1	40,766.4	29,102.0	319,616.7	73,424.9	27,601.8
2006	698,663.9	139,499.4 r	434,052.1 r	51,486.0	43,620.9 r	338,945.3 r	89,675.0	35,437.5 r
2005 FEB	556,201.8	94,516.7	356,493.7	41,721.5	33,396.5	281,375.7	76,380.2	28,811.2
MAR	568,199.7	93,688.7	368,183.4	43,369.6	32,056.7	292,757.1	76,722.4	29,605.1
APR	559,095.2	96,673.4	357,612.8	40,626.9	31,906.2	285,079.8	76,308.0	28,500.9
MAY	560,641.7	96,609.0	359,485.1	41,414.0	31,799.5	286,271.6	75,356.6	29,191.0
JUN	561,478.6	98,130.3	362,437.9	38,861.8	30,414.1	293,162.0	72,586.2	28,324.1
JUL	576,907.2	98,589.1	373,065.2	41,557.0	32,684.7	298,823.4	76,366.9	28,886.0
AUG	583,442.0	101,694.6	380,041.0	42,493.6	33,957.9	303,589.4	73,971.3	27,735.1
SEP	585,713.5	103,757.7	382,968.6	41,143.8	33,627.0	308,197.7	72,054.0	26,933.3
OCT	594,367.3	104,323.4	391,354.9	40,991.8	31,819.7	318,543.4	71,896.4	26,792.5
NOV	603,842.5	117,411.8	385,433.2	40,052.1	32,495.8	312,885.3	72,582.1	28,415.4
DEC	611,377.3	120,865.5	389,485.1	40,766.4	29,102.0	319,616.7	73,424.9	27,601.8
2006 JAN	607,467.0	121,437.6	383,953.0	43,857.3	29,638.4	310,457.3	74,289.7	27,786.7
FEB	605,461.1	122,639.8	376,513.6	43,460.1	30,018.5	303,035.1	77,333.2	28,974.5
MAR	613,764.4	119,836.6	384,252.2	44,022.4	31,767.1	308,462.6	78,480.7	31,194.9
APR	652,182.2	129,270.9	404,821.1	44,650.2	34,256.0	325,914.9	83,781.3	34,309.0
MAY	661,693.0	132,495.0	411,157.0	47,169.1	34,534.8	329,453.0	82,390.5	35,650.5
JUN	656,072.6	132,757.5 r	409,788.6 r	47,247.9	32,883.8	329,657.0 r	81,164.6	32,362.0
JUL	669,794.6	134,806.2 r	417,787.1 r	50,122.0	33,109.8	334,555.2 r	85,464.4	31,736.9
AUG	676,627.0	133,453.4 r	425,242.0 r	51,519.7	33,358.0	340,364.3 r	85,450.3	32,481.3
SEP	667,882.5	132,885.6	419,909.4	50,845.7	33,890.5	335,173.2	83,743.1	31,344.4
OCT	678,392.1	137,008.5	421,307.5	49,892.5	35,879.1	335,535.9	86,699.0	33,377.1
NOV	697,756.6	143,397.3	429,810.7	51,185.3	44,493.0	334,132.4	89,341.8	35,206.8
DEC	698,663.9	139,499.4 r	434,052.1 r	51,486.0	43,620.9 r	338,945.3 r	89,675.0	35,437.5 r
2007 JAN	707,546.0	140,707.8	436,638.1	50,596.6	45,974.8	340,066.7	93,613.0	36,587.2
FEB P	716,632.5	143,894.9	437,799.6	52,393.0	47,026.1	338,380.4	96,228.8	38,709.2

Note : Asian Currency Unit is a separate accounting unit of banks and other financial institutions given approval to transact in the Asian Dollar Market.

Table I.12 Asian Dollar Market: Liabilities of Asian Currency Units

US \$ MILLION

END OF PERIOD	TOTAL LIABILITIES	DEPOSITS OF NON-BANK CUSTOMERS	INTERBANK FUNDS				OTHER LIABILITIES
			TOTAL	IN SINGAPORE	INTER-ASIAN CURRENCY UNITS	OUTSIDE SINGAPORE	
			1=2+3+7	2	3=4+5+6	4	
2002	482,612.3	126,151.6	320,896.7	28,369.1	31,394.8	261,132.8	35,564.0
2003	509,145.9	137,116.0	330,911.0	34,243.1	29,401.4	267,266.5	41,118.9
2004	581,562.5	150,354.2	379,900.0	34,771.1	31,457.9	313,671.1	51,308.3
2005	611,377.3	162,834.2	394,080.5	37,337.3	29,067.8	327,675.4	54,462.6
2006	698,663.9	210,913.7	415,842.0	49,253.1	42,949.3	323,639.7	71,908.2
2005 FEB	556,201.8	150,522.8	354,543.8	35,080.3	33,413.2	286,050.4	51,135.1
MAR	568,199.7	155,282.2	360,788.5	36,419.2	32,035.6	292,333.7	52,129.1
APR	559,095.2	158,021.1	351,649.8	35,166.7	31,924.6	284,558.5	49,424.2
MAY	560,641.7	156,225.8	354,005.0	35,340.1	31,831.4	286,833.5	50,410.9
JUN	561,478.6	154,455.6	355,273.7	33,220.2	30,438.6	291,614.9	51,749.3
JUL	576,907.2	155,738.0	368,021.2	35,144.4	32,699.2	300,177.6	53,148.1
AUG	583,442.0	156,358.6	376,430.5	35,892.4	33,945.0	306,593.1	50,652.9
SEP	585,713.5	159,513.2	374,939.6	36,502.9	33,523.7	304,912.9	51,260.7
OCT	594,367.3	162,692.2	379,518.5	37,746.2	31,795.7	309,976.7	52,156.6
NOV	603,842.5	162,481.7	385,497.8	38,882.1	32,490.9	314,124.9	55,862.9
DEC	611,377.3	162,834.2	394,080.5	37,337.3	29,067.8	327,675.4	54,462.6
2006 JAN	607,467.0	169,597.8	384,636.8	39,523.3	29,688.3	315,425.1	53,232.4
FEB	605,461.1	169,804.7	381,221.3	41,139.4	29,986.3	310,095.6	54,435.1
MAR	613,764.4	170,429.4	384,855.1	43,671.3	31,793.3	309,390.4	58,479.8
APR	652,182.2	180,737.8	409,876.6	42,638.0	34,363.5	332,875.1	61,567.8
MAY	661,693.0	186,510.6	413,307.9	42,939.0	34,568.7	335,800.2	61,874.5
JUN	656,072.6	187,073.5	408,345.8	42,388.8	32,948.4	333,008.6	60,653.3
JUL	669,794.6	191,214.7	417,216.1	43,545.7	33,225.2	340,445.3	61,363.7
AUG	676,627.0	194,526.6	418,210.9	44,821.0	33,417.5	339,972.4	63,889.5
SEP	667,882.5	189,456.9	415,391.0	47,142.2	34,019.9	334,228.9	63,034.6
OCT	678,392.1	199,684.3	415,233.9	46,320.4	35,966.7	332,946.7	63,473.9
NOV	697,756.6	203,195.0	423,794.7	48,612.7	44,640.2	330,541.8	70,766.9
DEC	698,663.9	210,913.7	415,842.0	49,253.1	42,949.3	323,639.7	71,908.2
2007 JAN	707,546.0	212,883.4	424,029.5	48,837.0	45,289.2	329,903.3	70,633.1
FEB P	716,632.5	217,914.6	427,116.0	49,690.6	46,575.4	330,849.9	71,601.9

Note : Asian Currency Unit is a separate accounting unit of banks and other financial institutions given approval to transact in the Asian Dollar Market.

Table I.13 Asian Dollar Market: Maturities of Assets and Liabilities of Asian Currency Units

US \$ MILLION

END OF PERIOD	ASSETS				TOTAL ASSETS/ LIABILITIES	LIABILITIES			
	UP TO 6 MONTHS	OVER 6 MONTHS TO 1 YEAR	OVER 1 TO 3 YEARS	OVER 3 YEARS		UP TO 6 MONTHS	OVER 6 MONTHS TO 1 YEAR	OVER 1 TO 3 YEARS	OVER 3 YEARS
	1	2	3	4		5*	6	7	8
2002	355,377.1	34,950.1	32,640.5	59,644.6	482,612.3	439,973.3	18,919.8	5,909.0	17,810.2
2003	375,133.5	39,193.6	34,963.2	59,855.6	509,145.9	455,435.2	20,778.4	10,070.9	22,861.4
2004	415,471.7	43,474.9	40,584.6	48,688.8	581,562.5	489,620.2	23,424.1	13,388.9	19,858.5
2005	427,465.0	48,531.8	41,377.7	59,880.3	611,377.3	517,003.1	21,243.3	15,745.8	22,101.6
2006	483,604.9 r	43,155.3 r	47,937.7	86,752.1	698,663.9	588,857.2 r	23,333.7	18,843.2	25,096.7
2005 I	389,581.2	49,973.9	42,771.1	52,633.8	568,199.7	475,661.0	24,701.3	12,318.6	19,596.8
II	389,136.5	41,944.6	37,047.4	54,697.4	561,478.6	473,938.1	20,762.9	11,027.0	19,518.6
III	417,429.2	40,431.1	36,139.5	56,982.0	585,713.5	494,020.3	22,380.7	11,189.7	20,022.8
IV	427,465.0	48,531.8	41,377.7	59,880.3	611,377.3	517,003.1	21,243.3	15,745.8	22,101.6
2006 I	421,559.7	47,206.0	40,812.1	65,422.8	613,764.4	519,407.3	15,978.8	17,459.5	22,185.6
II	454,052.9	45,593.0	45,419.1	71,063.9	656,072.6	552,146.9	22,084.3	17,656.6	23,115.4
III	469,035.1	38,233.1	48,827.1	76,094.3	667,882.5	565,554.0	20,397.2	21,963.7	22,250.1
IV	483,604.9 r	43,155.3 r	47,937.7	86,752.1	698,663.9	588,857.2 r	23,333.7	18,843.2	25,096.7

Note : Asian Currency Unit is a separate accounting unit of banks and other financial institutions given approval to transact in the Asian Dollar Market.

Column 5 From March 2004, data exclude those with unallocated periods. Therefore, the sum of the maturity categories may not add up to the total.

Table I.14 Asian Dollar Market: Interbank and Non-bank Funds by Selected Regions

US \$ MILLION

END OF PERIOD	EAST ASIA 1/					EUROPE				
	DEPOSITS FROM NON-BANK CUSTOMERS	AMOUNTS DUE TO BANKS	AMOUNTS DUE FROM BANKS	LOANS & ADVANCES (INCL BILLS) TO NON-BANK CUSTOMERS	DEBT SECURITIES AND EQUITIES	DEPOSITS FROM NON-BANK CUSTOMERS	AMOUNTS DUE TO BANKS	AMOUNTS DUE FROM BANKS	LOANS & ADVANCES (INCL BILLS) TO NON-BANK CUSTOMERS	DEBT SECURITIES AND EQUITIES
	1	2	3	4	5	6	7	8	9	10
2002	60,980.2	158,150.5	127,995.9	29,344.9	n.a.	4,373.5	79,604.0	102,112.1	7,643.8	n.a.
2003	61,976.5	154,166.9	124,433.4	30,288.0	n.a.	6,653.6	85,019.9	108,805.7	6,909.3	n.a.
2004	66,418.1	183,156.6	133,487.0	32,105.4	20,110.5	5,394.5	96,922.3	134,053.0	7,373.5	17,851.0
2005	67,121.1	183,397.7	141,316.9	39,214.3	19,228.6	7,455.4	106,058.1	134,823.2	8,238.7	17,504.2
2006	82,155.6	190,938.8	129,676.9 r	35,614.9	23,219.0	13,925.6	101,696.7 r	163,725.9 r	12,710.8	20,972.6
2005 FEB	65,000.3	170,777.9	119,875.7	32,502.4	22,064.6	7,048.9	84,364.9	120,704.8	6,851.6	18,441.9
MAR	65,616.7	171,912.8	121,359.8	32,311.4	21,109.9	6,660.8	89,982.5	128,482.6	5,887.8	19,265.6
APR	65,225.4	164,628.9	119,520.7	32,695.5	21,337.3	7,811.2	86,445.6	127,491.4	6,755.1	19,167.3
MAY	64,382.1	163,606.0	118,136.7	32,649.8	21,036.6	7,917.2	85,466.5	131,590.4	6,522.5	18,113.4
JUN	65,820.7	155,519.0	125,216.1	32,551.7	19,778.0	8,266.8	104,307.8	128,329.7	6,585.9	18,489.5
JUL	65,342.2	165,245.2	136,187.6	33,288.3	20,439.4	8,775.6	100,268.8	124,237.9	6,634.4	18,756.4
AUG	65,683.8	168,801.7	129,771.5	34,046.7	19,297.4	8,232.2	104,643.7	129,912.8	6,507.1	17,979.3
SEP	67,218.1	168,864.4	138,981.1	34,072.7	19,050.5	8,049.3	104,480.5	125,059.8	6,949.7	17,144.4
OCT	67,686.9	171,466.2	143,753.3	34,618.3	18,338.2	7,240.3	107,162.4	133,073.6	7,282.4	17,146.5
NOV	67,098.3	177,777.2	132,723.4	37,878.7	18,164.7	7,339.5	99,864.1	140,734.4	8,737.9	17,138.5
DEC	67,121.1	183,397.7	141,316.9	39,214.3	19,228.6	7,455.4	106,058.1	134,823.2	8,238.7	17,504.2
2006 JAN	68,449.3	182,488.0	126,881.2	39,320.0	20,413.9	7,509.5	97,999.5	143,998.0	8,343.9	17,562.8
FEB	67,347.1	181,049.9	117,547.8	40,669.0	21,053.7	6,646.0	92,424.8	143,514.0	8,446.7	18,272.5
MAR	68,213.2	174,586.8	126,525.5	34,144.8	22,182.2	6,765.1	99,399.1	140,548.9	10,170.4	17,505.3
APR	68,932.1	194,780.9	131,770.0	41,601.5	24,140.7	10,555.1	96,330.2	151,552.9	10,131.4	18,265.2
MAY	71,851.2	190,612.2	131,417.2	41,439.8	21,795.2	10,531.3	106,114.2	156,659.7	9,848.3	18,952.4
JUN	72,136.2	179,324.8	136,959.5	39,198.6	20,736.4	10,462.3	115,774.2	147,647.4 r	10,204.2 r	19,063.5
JUL	72,581.3	188,162.9	141,204.8	39,345.3	23,979.4	11,459.6	117,274.4	151,475.2 r	11,094.3 r	20,274.7
AUG	74,860.8	190,910.6	139,207.0	36,598.1	22,655.8	11,977.3	114,101.4	153,961.6 r	11,057.6 r	21,022.3
SEP	75,220.1	188,396.8	139,925.5	37,814.5	21,001.6	8,404.0	110,159.6	151,992.1	10,693.6	20,672.3
OCT	76,761.4 r	192,343.4 r	130,331.4	38,143.4 r	21,885.3	9,170.8 r	105,144.9	158,746.0	11,302.9	20,545.6
NOV	79,616.6	194,060.1	129,617.9	40,483.9	22,167.5	9,697.8 r	100,256.3	157,251.7	11,713.6	21,633.2
DEC	82,155.6	190,938.8	129,676.9 r	35,614.9	23,219.0	13,925.6	101,696.7 r	163,725.9 r	12,710.8	20,972.6
2007 JAN	79,864.2	193,876.0	132,251.4	36,038.7	24,656.6	13,754.5	104,111.6	159,363.1	12,596.8	22,421.4
FEB P	80,680.0	200,328.8	135,995.5	36,783.0	25,753.7	14,611.6	98,822.6	156,416.8	12,928.0	23,042.2

Notes : Asian Currency Unit is a separate accounting unit of banks and other financial institutions given approval to transact in the Asian Dollar Market.  
The revised country groupings for Europe and The Americas include key country exposures only.

1/ Consists of China, Hong Kong, Japan, South Korea, Taiwan and ASEAN (excluding Singapore).



Table I.14 Asian Dollar Market: Interbank and Non-bank Funds by Selected Regions (continued)

US \$ MILLION

END OF PERIOD	THE AMERICAS					OTHERS				
	DEPOSITS FROM NON-BANK CUSTOMERS	AMOUNTS DUE TO BANKS	AMOUNTS DUE FROM BANKS	LOANS & ADVANCES (INCL BILLS) TO NON-BANK CUSTOMERS	DEBT SECURITIES AND EQUITIES	DEPOSITS FROM NON-BANK CUSTOMERS	AMOUNTS DUE TO BANKS	AMOUNTS DUE FROM BANKS	LOANS & ADVANCES (INCL BILLS) TO NON-BANK CUSTOMERS	DEBT SECURITIES AND EQUITIES
	11	12	13	14	15	16	17	18	19	20
2002	16,935.8	5,300.8	25,299.5	8,892.8	n.a.	7,931.7	18,077.5	13,551.8	9,252.1	n.a.
2003	19,353.4	9,835.5	24,503.4	11,334.0	n.a.	8,866.5	18,244.2	17,663.8	12,265.1	n.a.
2004	24,015.0	7,617.3	25,758.2	13,225.4	20,385.7	11,541.0	25,974.9	16,643.6	14,210.1	11,453.5
2005	27,767.2	8,243.0	23,340.5	26,566.7	20,971.2	14,876.6	29,976.6	20,136.1	18,068.6	12,809.6
2006	38,226.0	4,799.6	28,346.2	26,387.4	23,188.7	19,407.8	26,204.6	17,196.3	24,834.4	17,637.1
2005 FEB	25,582.9	7,225.5	20,570.4	13,069.5	21,330.0	11,670.1	23,682.0	20,224.7	16,278.2	11,504.5
MAR	25,665.1	7,282.5	22,181.9	12,915.9	21,457.0	13,183.9	23,156.0	20,732.8	16,912.0	12,116.1
APR	26,946.9	7,880.0	17,795.2	13,325.9	21,091.9	13,018.5	25,604.0	20,272.5	17,234.4	12,158.1
MAY	25,945.6	8,431.2	18,573.4	13,929.1	21,085.5	13,200.5	29,329.8	17,971.1	17,004.9	12,500.7
JUN	25,731.4	7,362.8	23,489.3	14,372.8	20,983.8	13,114.5	24,425.3	16,127.0	16,706.4	10,695.0
JUL	25,491.1	8,850.3	20,342.8	14,144.8	21,279.0	12,793.5	25,813.3	18,055.2	16,299.8	13,252.1
AUG	25,519.8	7,522.7	24,090.4	14,623.1	21,191.2	12,797.2	25,625.0	19,814.8	18,054.9	12,968.4
SEP	26,618.1	7,315.2	22,786.6	15,661.0	20,560.2	13,421.1	24,252.9	21,370.2	18,437.6	12,491.0
OCT	27,420.3	7,605.7	21,264.4	15,476.9	21,121.7	13,727.2	23,742.4	20,452.1	18,283.4	12,732.8
NOV	27,105.5	7,914.1	22,876.3	24,943.9	21,277.9	13,896.8	28,569.5	16,551.2	18,106.4	13,226.6
DEC	27,767.2	8,243.0	23,340.5	26,566.7	20,971.2	14,876.6	29,976.6	20,136.1	18,068.6	12,809.6
2006 JAN	28,123.5	8,408.8	21,107.7	26,561.4	20,513.6	15,992.3	26,528.7	18,470.5	18,373.6	12,954.1
FEB	27,966.6	7,267.8	23,232.6	27,112.0	20,889.7	15,965.2	29,353.1	18,740.7	17,673.0	14,111.2
MAR	28,638.4	8,070.2	21,487.5	28,671.9	21,312.4	15,788.6	27,334.3	19,900.7	18,406.1	14,461.3
APR	30,353.4	8,015.0	22,264.5	27,598.4	22,457.0	16,580.5	33,749.0	20,327.5	20,770.5	15,778.5
MAY	31,869.8	7,429.7	21,493.8	27,775.8	22,598.7	16,402.6	31,644.1	19,882.4	21,412.1	15,988.9
JUN	33,573.1	7,620.4	26,889.4	27,836.5	21,913.8	16,879.1	30,289.3	18,160.7	22,132.9	16,247.9
JUL	33,894.4	6,250.4	23,379.0	27,718.9	22,380.9	16,757.0	28,757.7	18,496.2	22,258.2	15,597.2
AUG	34,013.9	7,087.2	29,326.6	27,580.5	22,921.8	17,129.9	27,873.2	17,869.1	22,636.3	15,577.2
SEP	34,192.5	7,483.4	26,874.3	25,631.9	22,673.1	17,629.5	28,189.1	16,381.3	22,678.0	15,730.9
OCT	36,575.0	7,283.6	28,268.0	25,695.1	23,720.1	18,369.0	28,174.9	18,190.5	23,525.8	17,098.7
NOV	36,634.3	5,469.5	30,643.7	26,089.5	23,622.8	18,732.1	30,755.9	16,619.0	24,906.7	17,376.9
DEC	38,226.0	4,799.6	28,346.2	26,387.4	23,188.7	19,407.8	26,204.6	17,196.3	24,834.4	17,637.1
2007 JAN	38,545.6	5,618.8	31,670.9	26,711.0	23,641.3	20,520.2	26,296.9	16,781.3	25,828.0	18,131.6
FEB P	40,465.0	4,834.0	29,268.3	27,455.8	23,974.0	20,850.7	26,864.6	16,699.9	26,169.8	18,496.3

Table I.15 Credit and Charge Card Statistics

\$\$ MILLION

PERIOD	NUMBER OF CARDS		TOTAL CARD BILLINGS	ROLLOVER BALANCE	BAD DEBTS WRITTEN OFF	CHARGE-OFF RATES (%)
	MAIN	SUPPLEMENTARY				
	1*	2*				
2002	2,263,876	958,734	11,901.3	2,390.8	135.4	6.1
2003	2,504,252	987,750	12,422.9	2,533.1	193.7	8.0
2004	2,985,973	946,784	14,046.5	2,607.9	195.9	7.7
2005	3,415,507	1,026,516	14,832.8	2,696.4	137.1	5.2
2006	3,968,044	1,121,932	18,639.9	2,759.8	118.6	4.5
2005 FEB	2,992,330	946,673	1,143.7	2,655.8	14.2	-
MAR	3,001,781	946,612	1,286.6	2,587.6	12.6	6.4
APR	3,020,520	949,051	1,201.8	2,640.4	12.8	-
MAY	3,051,277	956,335	1,307.4	2,627.6	11.4	-
JUN	3,100,364	970,022	1,344.8	2,615.8	11.3	5.5
JUL	3,148,715	976,458	1,270.9	2,625.0	10.5	-
AUG	3,185,103	985,122	1,300.0	2,621.9	10.0	-
SEP	3,227,785	997,135	1,357.2	2,667.1	10.3	4.8
OCT	3,272,179	1,007,828	1,433.6	2,636.0	10.2	-
NOV	3,321,330	1,017,898	1,493.6	2,715.2	9.3	-
DEC	3,415,507	1,026,516	1,693.2	2,696.4	10.3	4.5
2006 JAN	3,438,624	1,034,493	1,402.3	2,677.2	9.2	-
FEB	3,478,645	1,041,829	1,328.7	2,647.4	9.1	-
MAR	3,515,951	1,049,920	1,555.1	2,486.1	10.7	4.5
APR	3,571,029	1,057,489	1,384.9	2,639.4	10.2	-
MAY	3,607,154	1,069,459	1,589.8	2,543.0	9.9	-
JUN	3,651,874	1,079,130	1,561.6	2,634.0	10.6	4.8
JUL	3,691,297	1,085,914	1,500.8	2,584.6	9.7	-
AUG	3,704,888	1,094,547	1,495.0	2,558.4	10.3	-
SEP	3,804,757	1,101,801	1,556.4	2,657.8	10.2	4.7
OCT	3,854,930	1,110,191	1,671.3	2,642.1	9.9	-
NOV	3,871,477	1,119,087	1,688.9	2,714.6	9.4	-
DEC	3,968,044	1,121,932	1,905.1	2,759.8	9.4	4.3
2007 JAN	4,023,097	1,128,124	1,702.4	2,709.9	8.8	-
FEB P	4,038,599	1,130,207	1,546.6	2,785.2	8.8	-

Columns 1, 2 & 4 Refer to end of period.

Column 6 Charge-off rate for the year is defined as the bad debts written off during the year divided by the average rollover balance for the same year. As monthly charge-off rates tend to be too volatile, we have chosen to publish quarterly charge-off rates instead. However, there can still be seasonal variations. The quarterly charge-off rate is calculated by annualising the ratio obtained from dividing the bad debts written off for the quarter by the average rollover balance for the same quarter.

Table II.1 Finance Companies: Assets and Liabilities

\$\$ MILLION

END OF PERIOD	ASSETS						LIABILITIES						
	TOTAL ASSETS/ LIABILITIES	CASH AND BALANCES WITH MAS	DEPOSITS WITH BANKS AND OTHER INSTITUTIONS	SECURITIES AND EQUITIES	LOANS AND ADVANCES	OTHER ASSETS	CAPITAL AND RESERVES	DEPOSITS			OTHER CREDITORS	OTHER LIABILITIES	
								TOTAL	FIXED	SAVINGS			OTHERS
1	2	3	4	5	6	7	8=9+10+11	9	10	11	12	13	
2002	13,722.3	262.4	1,345.7	1,115.8	10,815.9	182.4	2,111.2	9,855.7	9,612.0	222.6	21.1	254.9	1,500.5
2003	7,902.7	162.2	312.3	687.4	6,657.2	83.7	1,406.3	5,530.2	5,373.4	149.7	7.1	119.9	846.4
2004	8,308.5	168.5	460.7	709.4	6,878.9	90.9	1,442.8	5,667.6	5,514.1	145.8	7.7	321.3	876.8
2005	9,444.9	195.4	455.1	827.3	7,869.7	97.4	1,658.4	6,365.5	6,240.4	121.6	3.5	685.4	735.7
2006	10,066.6	211.7	757.1	1,008.0	7,972.2	117.6	1,693.1	7,150.3	7,035.3	108.9	6.0	603.7	619.5
2005 FEB	8,455.4	169.1	570.6	718.2	6,910.9	86.7	1,469.4	5,773.5	5,628.1	142.9	2.5	351.0	861.5
MAR	8,579.5	171.3	596.1	756.4	6,969.0	86.6	1,643.4	5,901.3	5,757.7	140.9	2.7	326.6	708.2
APR	8,649.4	173.2	606.9	766.4	7,010.0	92.9	1,609.9	5,969.4	5,829.2	137.8	2.4	313.6	756.5
MAY	8,602.1	174.1	530.2	765.8	7,040.5	91.4	1,579.0	5,965.5	5,825.9	136.0	3.7	306.9	750.7
JUN	8,569.8	175.7	394.8	773.6	7,133.5	92.2	1,612.4	5,944.9	5,799.9	133.6	11.3	309.4	703.0
JUL	8,577.9	177.8	378.2	778.1	7,157.3	86.5	1,630.8	5,923.4	5,788.9	132.0	2.5	318.3	705.5
AUG	8,612.6	179.0	346.8	777.0	7,218.7	91.1	1,618.3	5,943.0	5,807.0	130.7	5.3	315.9	735.5
SEP	8,710.1	181.0	264.4	785.7	7,388.8	90.3	1,626.5	5,993.5	5,862.0	129.1	2.4	349.8	740.4
OCT	8,792.0	186.9	142.9	786.6	7,581.8	93.8	1,652.6	5,954.5	5,823.3	128.1	3.1	454.4	730.6
NOV	9,051.6	191.7	259.5	820.3	7,684.7	95.5	1,660.3	6,051.1	5,921.1	127.1	2.9	604.1	736.2
DEC	9,444.9	195.4	455.1	827.3	7,869.7	97.4	1,658.4	6,365.5	6,240.4	121.6	3.5	685.4	735.7
2006 JAN	9,617.0	202.5	527.0	858.7	7,939.6	89.2	1,670.8	6,527.7	6,407.6	117.5	2.6	690.7	727.8
FEB	9,929.7	204.3	821.3	865.2	7,943.2	95.6	1,677.0	6,850.2	6,732.0	115.4	2.8	676.3	726.2
MAR	9,590.4	205.2	457.4	873.5	7,959.5	94.7	1,685.7	6,559.6	6,442.8	114.3	2.4	624.1	721.1
APR	9,595.8	206.7	478.9	874.0	7,935.8	100.4	1,639.9	6,547.2	6,431.5	112.0	3.8	624.9	783.8
MAY	9,806.9	205.5	629.0	912.8	7,956.8	102.7	1,647.0	6,821.9	6,706.8	110.4	4.7	621.4	716.5
JUN	9,854.8	208.7	631.3	940.3	7,968.5	106.0	1,647.3	6,856.5	6,741.8	110.2	4.6	639.1	712.0
JUL	9,788.7	209.3	642.7	951.2	7,892.1	93.4	1,655.2	6,790.8	6,675.8	110.7	4.2	619.2	723.5
AUG	9,842.2	207.9	752.7	950.7	7,831.3	99.7	1,640.6	6,891.3	6,779.6	107.7	4.0	614.9	695.4
SEP	9,796.2	206.0	622.6	955.8	7,914.2	97.7	1,655.6	6,854.1	6,740.9	108.5	4.6	613.0	673.5
OCT	9,903.8	209.2	716.7	979.4	7,893.8	104.6	1,670.5	6,965.2	6,853.4	108.2	3.5	610.6	657.6
NOV	9,945.7	209.7	715.0	1,005.6	7,914.3	101.1	1,676.6	7,013.7	6,900.0	109.5	4.2	607.3	648.1
DEC	10,066.6	211.7	757.1	1,008.0	7,972.2	117.6	1,693.1	7,150.3	7,035.3	108.9	6.0	603.7	619.5
2007 JAN	10,446.7	214.6	992.9	1,089.2	8,021.2	128.8	1,703.7	7,501.2	7,376.0	112.2	13.0	602.4	639.4
FEB P	10,707.8	216.4	1,049.8	1,114.4	8,188.9	138.3	1,713.8	7,761.9	7,630.6	115.7	15.5	599.0	633.1

Table II.2 Finance Companies: Loans and Advances

\$\$ MILLION

END OF PERIOD	LOANS AND ADVANCES							
	TOTAL	HOUSING LOANS	HIRE PURCHASE FINANCE				LEASE FINANCE	OTHER LOANS AND ADVANCES
			TOTAL	MOTOR VEHICLES	CONSUMER DURABLES	OTHERS		
1=2+3+7+8	2	3=4+5+6	4	5	6	7	8*	
2002	10,815.9	1,547.9	4,034.4	3,734.2	0.1	300.1	0.3	5,233.3
2003	6,657.2	756.3	2,459.0	2,317.7	0.2	141.1	0.0	3,441.9
2004	6,878.9	952.4	2,364.8	2,193.4	0.3	171.1	0.0	3,561.7
2005	7,869.7	1,583.3	2,467.6	2,265.3	0.3	202.0	0.0	3,818.7
2006	7,972.2 r	1,681.3	2,245.8 r	2,064.8	0.2	180.8 r	0.0	4,045.1
2005 FEB	6,910.9	980.6	2,417.8	2,241.8	0.4	175.6	0.0	3,512.4
MAR	6,969.0	1,000.2	2,429.2	2,251.3	0.4	177.5	0.0	3,539.6
APR	7,010.0	1,018.7	2,450.5	2,270.6	0.4	179.6	0.0	3,540.8
MAY	7,040.5	1,043.6	2,474.5	2,289.3	0.4	184.8	0.0	3,522.4
JUN	7,133.5	1,058.8	2,518.0	2,329.1	0.4	188.5	0.0	3,556.8
JUL	7,157.3	1,111.0	2,534.8	2,344.9	0.3	189.6	0.0	3,511.4
AUG	7,218.7	1,151.7	2,531.3	2,341.5	0.4	189.5	0.0	3,535.7
SEP	7,388.8	1,237.8	2,515.2	2,324.6	0.4	190.3	0.0	3,635.8
OCT	7,581.8	1,357.9	2,501.9	2,306.8	0.4	194.8	0.0	3,721.9
NOV	7,684.7	1,467.9	2,481.8	2,289.0	0.3	192.5	0.0	3,734.9
DEC	7,869.7	1,583.3	2,467.6	2,265.3	0.3	202.0	0.0	3,818.7
2006 JAN	7,939.6	1,632.4	2,446.9	2,246.3	0.3	200.3	0.0	3,860.3
FEB	7,943.2	1,665.6	2,425.3	2,221.7	0.3	203.3	0.0	3,852.3
MAR	7,959.5	1,681.1	2,401.9	2,199.9	0.3	201.7	0.0	3,876.5
APR	7,935.8	1,696.3	2,392.9	2,194.1	0.3	198.5	0.0	3,846.5
MAY	7,956.8	1,702.4	2,369.7	2,174.1	0.3	195.4	0.0	3,884.6
JUN	7,968.5	1,703.2	2,365.6	2,164.0	0.2	201.4	0.0	3,899.7
JUL	7,892.1	1,701.6	2,346.0	2,144.5	0.2	201.3	0.0	3,844.5
AUG	7,831.3	1,698.0	2,325.5	2,125.5	0.2	199.8	0.0	3,807.7
SEP	7,914.2	1,715.4	2,288.9	2,099.1	0.2	189.6	0.0	3,909.8
OCT	7,893.8	1,687.6	2,266.7	2,078.5	0.2	188.1	0.0	3,939.5
NOV	7,914.3	1,691.8	2,249.0	2,062.8	0.2	186.0	0.0	3,973.6
DEC	7,972.2 r	1,681.3	2,245.8 r	2,064.8	0.2	180.8 r	0.0	4,045.1
2007 JAN	8,021.2	1,659.2	2,252.9	2,074.2	0.2	178.5	0.0	4,109.1
FEB P	8,188.9	1,652.1	2,249.6	2,073.0	0.5	176.2	0.0	4,287.1

Column 8 Includes block discounting.

Table II.3 Merchant Banks: Assets and Liabilities of Domestic and Asian Currency Unit Operations

\$\$ MILLION

END OF PERIOD	ASSETS							LIABILITIES					
	TOTAL ASSETS/ LIABILITIES	AMOUNTS DUE FROM BANKS			LOANS AND ADVANCES TO NON-BANK CUSTOMERS	SECURITIES AND EQUITIES	OTHER ASSETS	CAPITAL AND RESERVES	AMOUNTS DUE TO BANKS			BORROWINGS FROM NON-BANK CUSTOMERS	OTHER LIABI- LITIES
		TOTAL	IN SINGAPORE	OUTSIDE SINGAPORE					TOTAL	IN SINGAPORE	OUTSIDE SINGAPORE		
		1	2=3+4	3					4*	5	6		
2002	52,564.3	22,156.6	891.2	21,265.4	19,674.8	9,511.3	1,221.6	7,742.7	24,858.7	501.3	24,357.4	17,729.8	2,233.1
2003	58,203.4	22,291.5	1,481.6	20,809.9	24,229.0	10,109.9	1,573.0	8,232.6	29,304.7	724.3	28,580.4	18,207.0	2,459.1
2004	59,244.8	25,718.7	1,394.9	24,323.8	18,693.0	11,991.1	2,842.0	7,636.0	27,320.4	1,225.9	26,094.5	20,406.1	3,882.4
2005	64,845.1	24,548.3	665.3	23,883.0	26,675.0	11,209.1	2,412.7	8,374.1	29,471.5	904.5	28,567.1	23,036.8	3,962.7
2006	77,988.6	32,683.2 r	805.7	31,877.5 r	27,562.0 r	15,650.2	2,093.3 r	8,103.2 r	35,834.0 r	1,635.2	34,198.8 r	28,859.0	5,192.3 r
2005 FEB	63,372.5	28,177.1	1,335.4	26,841.7	19,350.0	12,554.8	3,290.4	7,780.9	29,489.2	741.7	28,747.5	21,303.8	4,798.6
MAR	63,684.8	28,063.0	1,409.7	26,653.2	20,128.2	12,173.5	3,320.1	7,899.0	30,152.0	754.4	29,397.5	21,189.7	4,444.0
APR	63,127.4	28,306.3	1,356.4	26,950.0	20,118.4	11,515.6	3,187.0	7,841.0	30,323.7	928.8	29,394.9	21,144.5	3,818.2
MAY	61,045.1	26,659.2	1,342.9	25,316.4	20,461.3	10,877.4	3,047.3	7,920.6	29,906.0	952.5	28,953.5	19,718.4	3,500.2
JUN	61,768.9	26,921.5	1,339.7	25,581.8	20,689.1	10,967.2	3,191.1	7,941.8	29,289.7	1,009.1	28,280.5	20,638.3	3,899.1
JUL	61,777.7	27,398.6	1,369.3	26,029.3	20,664.1	10,203.8	3,511.2	7,958.6	29,118.4	1,002.6	28,115.8	20,587.5	4,113.2
AUG	63,414.3	28,813.6	1,239.2	27,574.4	21,938.2	9,867.9	2,794.6	8,061.5	30,679.0	842.9	29,836.0	21,511.4	3,162.4
SEP	65,039.8	29,197.1	988.8	28,208.3	23,142.4	10,015.7	2,684.7	8,140.4	31,242.3	476.3	30,766.0	22,135.1	3,522.0
OCT	63,635.5	26,814.5	823.3	25,991.1	23,820.4	10,397.7	2,603.0	8,073.0	29,325.3	456.6	28,868.7	22,459.9	3,777.3
NOV	64,437.0	24,140.2	687.7	23,452.4	26,933.5	10,580.6	2,782.8	8,537.2	29,058.0	462.9	28,595.1	22,891.9	3,949.9
DEC	64,845.1	24,548.3	665.3	23,883.0	26,675.0	11,209.1	2,412.7	8,374.1	29,471.5	904.5	28,567.1	23,036.8	3,962.7
2006 JAN	65,195.0	24,363.2	642.0	23,721.3	26,434.9	11,744.8	2,652.2	8,291.3	29,651.5	837.4	28,814.2	23,128.3	4,123.8
FEB	67,106.5	24,831.8	706.0	24,125.7	27,042.0	12,481.6	2,751.1	8,479.0	30,160.2	1,141.1	29,019.1	23,291.6	5,175.6
MAR	70,715.8	24,437.2	765.1	23,672.1	29,642.3	13,565.7	3,070.6	8,578.5	33,627.8	1,352.1	32,275.7	23,918.5	4,591.1
APR	71,660.2	25,512.6	696.4	24,816.2	28,591.2	14,045.3	3,511.1	8,203.1	32,748.7	1,636.3	31,112.4	25,998.6	4,709.7
MAY	72,940.4	27,937.2	783.1	27,154.1	29,095.3	12,355.5	3,552.4	8,199.7	34,763.3	1,730.2	33,033.0	25,805.8	4,171.6
JUN	72,198.5	27,142.7	802.7	26,340.0	30,037.9	12,351.2	2,666.7	8,221.2	33,310.6	1,906.5	31,404.1	26,697.2	3,969.5
JUL	72,965.0	26,615.6	767.2	25,848.4	29,587.7	14,056.1	2,705.6	8,258.7	34,604.6	2,026.2	32,578.4	26,389.2	3,712.5
AUG	73,326.8	27,115.1	748.4	26,366.7	28,986.7	14,212.3	3,012.7	8,327.4	33,959.4	1,975.5	31,983.9	26,523.0	4,517.0
SEP	75,667.9	31,804.7	633.9	31,170.8	26,820.6	14,045.3	2,997.3	8,046.4	35,208.4	1,726.8	33,481.6	26,721.9	5,691.2
OCT	75,578.0	30,333.6	668.5	29,665.1	26,945.7	14,841.0	3,457.6	8,024.7	35,369.5	1,736.3	33,633.2	26,950.9	5,232.9
NOV	77,607.7	32,619.9	701.9	31,918.0	27,792.4	14,737.0	2,458.4	8,051.3	35,759.3	1,702.2	34,057.2	27,887.1	5,909.9
DEC	77,988.6	32,683.2 r	805.7	31,877.5 r	27,562.0 r	15,650.2	2,093.3 r	8,103.2 r	35,834.0 r	1,635.2	34,198.8 r	28,859.0	5,192.3 r
2007 JAN	81,029.6	33,632.7	732.5	32,900.1	28,151.9	16,788.1	2,456.9	8,251.1	36,671.2	1,590.8	35,080.3	29,408.5	6,698.9
FEB P	82,249.6	35,215.5	784.3	34,431.2	27,504.3	16,321.2	3,208.6	8,303.7	37,318.6	1,746.1	35,572.5	29,893.9	6,733.4

Note : Provision of corporate financial advisory services, underwriting and operations in the gold market would not be reflected in the data.

Columns 4 & 11 Includes Asian Currency Units.

Table II.4 Merchant Banks: Assets and Liabilities of Domestic Unit Operations

S\$ MILLION

END OF PERIOD	ASSETS							LIABILITIES					
	TOTAL ASSETS/ LIABILITIES	AMOUNTS DUE FROM BANKS			LOANS AND ADVANCES TO NON-BANK CUSTOMERS	SECURITIES AND EQUITIES	OTHER ASSETS	CAPITAL AND RESERVES	AMOUNTS DUE TO BANKS			BORROWINGS FROM NON-BANK CUSTOMERS	OTHER LIABILITIES
		TOTAL	IN SINGAPORE	OUTSIDE SINGAPORE					TOTAL	IN SINGAPORE	OUTSIDE SINGAPORE		
		1	2=3+4	3					4	5	6		
2002	6,769.7	5,264.3	881.9	4,382.4	809.0	477.3	219.0	4,517.2	1,529.8	501.1	1,028.7	336.5	386.3
2003	7,377.5	5,985.7	1,479.4	4,506.3	768.2	350.7	273.0	4,700.9	1,771.5	724.0	1,047.5	446.0	459.0
2004	6,731.0	4,970.6	1,393.0	3,577.6	688.4	745.1	326.9	3,529.3	2,301.8	831.0	1,470.8	435.8	464.0
2005	6,157.3	4,034.7	664.2	3,370.5	685.2	1,137.6	299.8	2,613.4	2,842.4	904.5	1,937.9	237.8	463.7
2006	7,379.3	4,403.2	804.9	3,598.3	715.1	1,864.0	397.0	2,133.5	4,236.7	1,635.2	2,601.5	365.5	643.6
2005 FEB	6,844.1	5,170.2	1,333.6	3,836.6	666.3	651.5	356.1	3,642.1	2,419.3	741.7	1,677.6	292.7	489.9
MAR	6,826.4	5,226.8	1,407.8	3,819.0	655.5	667.8	276.2	3,679.6	2,450.7	754.4	1,696.3	297.4	398.7
APR	6,731.0	5,006.7	1,355.5	3,651.2	613.2	833.0	278.1	3,479.3	2,627.1	928.8	1,698.2	274.5	350.1
MAY	6,776.6	4,978.8	1,341.9	3,637.0	637.5	846.8	313.5	3,433.4	2,669.7	952.5	1,717.2	270.3	403.1
JUN	6,784.2	5,039.7	1,338.7	3,701.1	632.6	820.0	291.9	3,340.2	2,762.8	1,009.1	1,753.7	273.1	408.1
JUL	6,737.6	5,028.0	1,368.3	3,659.8	635.7	772.9	301.0	3,286.7	2,764.7	1,002.6	1,762.2	266.7	419.5
AUG	6,656.8	4,943.9	1,238.2	3,705.7	651.5	759.0	302.3	3,239.1	2,690.0	842.9	1,847.1	272.4	455.3
SEP	6,263.7	4,659.6	987.8	3,671.8	640.2	658.9	305.1	3,121.8	2,399.5	476.3	1,923.2	283.7	458.7
OCT	5,421.8	3,724.5	822.3	2,902.2	642.3	757.4	297.6	2,335.7	2,397.6	456.6	1,941.0	233.6	454.9
NOV	5,897.1	3,989.2	686.5	3,302.7	670.2	919.3	318.4	2,697.1	2,449.8	462.9	1,986.9	260.4	489.8
DEC	6,157.3	4,034.7	664.2	3,370.5	685.2	1,137.6	299.8	2,613.4	2,842.4	904.5	1,937.9	237.8	463.7
2006 JAN	6,086.0	4,058.8	640.8	3,418.0	631.0	1,089.3	306.9	2,693.4	2,672.8	837.4	1,835.5	246.9	472.9
FEB	6,500.6	4,147.5	704.9	3,442.7	611.3	1,349.4	392.4	2,863.6	2,874.5	1,141.1	1,733.4	267.3	495.3
MAR	6,761.9	4,427.3	764.0	3,663.3	631.3	1,372.6	330.7	2,874.9	3,109.4	1,352.1	1,757.4	275.7	501.9
APR	6,896.7	4,255.0	695.2	3,559.8	614.7	1,670.3	356.7	2,588.3	3,543.2	1,636.3	1,906.9	277.5	487.6
MAY	7,613.3	4,831.0	782.1	4,048.8	628.6	1,803.0	350.8	2,522.2	4,349.0	1,730.2	2,618.8	289.3	452.8
JUN	7,540.3	4,585.3	801.8	3,783.5	680.7	1,933.1	341.1	2,476.3	4,311.1	1,882.6	2,428.5	311.2	441.6
JUL	7,695.6	4,618.5	766.3	3,852.1	687.2	2,038.6	351.2	2,430.8	4,467.6	2,002.5	2,465.1	350.6	446.5
AUG	7,787.8	4,716.2	747.5	3,968.8	687.1	2,009.0	375.5	2,404.0	4,475.3	1,951.5	2,523.8	418.2	490.4
SEP	7,651.5	4,610.1	633.1	3,976.9	710.0	1,984.1	347.4	2,380.4	4,356.4	1,725.4	2,630.9	411.4	503.4
OCT	7,981.5	4,520.7	667.7	3,853.0	691.8	1,999.6	769.5	2,335.7	4,370.1	1,736.3	2,633.8	344.9	930.8
NOV	7,667.8	4,555.7	701.1	3,854.6	706.1	1,998.3	407.7	2,357.2	4,335.8	1,701.7	2,634.1	374.7	600.2
DEC	7,379.3	4,403.2	804.9	3,598.3	715.1	1,864.0	397.0	2,133.5	4,236.7	1,635.2	2,601.5	365.5	643.6
2007 JAN	7,640.9	4,564.4	731.8	3,832.6	749.5	1,945.1	381.9	2,288.2	4,409.4	1,590.8	2,818.6	338.3	605.0
FEB P	7,845.0	4,572.3	783.7	3,788.6	808.7	2,062.8	401.3	2,321.0	4,572.3	1,745.4	2,827.0	343.1	608.6

Table II.5 Insurance Companies: Assets

S\$ MILLION

END OF PERIOD	SINGAPORE OPERATIONS		SINGAPORE LIFE INSURANCE FUND					
	TOTAL	SINGAPORE INSURANCE FUND	TOTAL	CASH AND DEPOSITS	GOVERNMENT SECURITIES	EQUITIES AND SECURITIES	LOANS	OTHER ASSETS
	1	2* = 3+9	3=4 TO 8	4	5	6	7	8
2002	63,767.8	58,820.0	54,002.1	4,796.1	9,467.2	31,617.3	4,536.2	3,585.3
2003	74,584.2	68,945.6	63,597.2	4,646.9	11,628.9	39,498.6	4,018.0	3,804.8
2004	83,486.6	77,332.3	71,813.7	5,148.3	14,427.2	44,715.0	3,686.2	3,837.0
2005	97,308.3	89,769.6	83,548.4	4,529.4	44,974.8	26,492.4	3,377.5	4,174.3
2006 P	105,548.7	99,568.1	92,852.3	5,011.1	47,319.6	32,466.4	3,399.3	4,655.9
2005 I	90,065.8	83,347.1	77,283.7	4,686.4	41,598.1	23,248.9	3,558.9	4,191.4
II	93,481.0	86,427.2	80,295.7	4,391.9	43,602.5	24,521.5	3,479.9	4,299.9
III	96,776.4	89,520.1	83,282.5	4,555.1	45,127.9	25,596.3	3,487.8	4,515.4
IV	97,308.3	89,769.6	83,548.4	4,529.4	44,974.8	26,492.4	3,377.5	4,174.3
2006 I	97,614.6	91,862.9	85,231.6	5,156.3	43,507.6	28,784.2	3,355.3	4,428.2
II	97,481.9	91,550.1	85,033.8	5,070.4	44,228.6	27,933.8	3,350.5	4,450.5
III	101,295.8	95,172.4	88,523.2	5,043.8	45,943.3	29,623.1	3,422.8	4,490.2
IV P	105,548.7	99,568.1	92,852.3	5,011.1	47,319.6	32,466.4	3,399.3	4,655.9

Note: Comparisons for Government Securities and Equities and Securities will not be directly comparable due to change in valuation basis with effect from 1st Quarter 2005.

Column 2 Refers to the Singapore Life Insurance Fund (column 3) and the Singapore General Insurance Fund (column 9).

Table II.5 Insurance Companies: Assets (continued)

S\$ MILLION

END OF PERIOD	SINGAPORE GENERAL INSURANCE FUND					
	TOTAL	CASH AND DEPOSITS	GOVERNMENT SECURITIES	EQUITIES AND SECURITIES	LOANS	OTHER ASSETS
	9=10 TO 14	10	11	12	13	14
2002	4,817.9	1,742.2	791.3	1,502.3	77.8	704.3
2003	5,348.4	1,882.8	1,225.7	1,485.6	73.8	680.5
2004	5,518.6	1,615.2	1,661.8	1,558.6	71.8	611.2
2005	6,221.2	1,687.3	2,989.5	843.2	67.1	634.1
2006 P	6,715.8	2,001.7	3,030.2	865.4	70.2	748.3
2005 I	6,063.4	1,648.9	2,762.9	800.1	64.4	787.1
II	6,131.4	1,679.9	2,875.6	833.8	46.0	696.2
III	6,237.6	1,726.7	2,947.3	844.9	64.5	654.2
IV	6,221.2	1,687.3	2,989.5	843.2	67.1	634.1
2006 I	6,631.3	1,890.6	2,957.7	908.2	75.1	799.7
II	6,516.3	1,797.4	3,058.7	808.9	77.3	774.0
III	6,649.2	1,958.3	3,067.0	806.9	77.2	739.8
IV P	6,715.8	2,001.7	3,030.2	865.4	70.2	748.3



Table II.6 General Insurance Companies: Premiums and Claims

S\$ MILLION

PERIOD	PREMIUMS						CLAIMS					
	SINGAPORE OPERATIONS			SINGAPORE INSURANCE FUND			SINGAPORE OPERATIONS			SINGAPORE INSURANCE FUND		
	GROSS	PAID FOR REINSURANCE OUTSIDE SINGAPORE	NET	GROSS	PAID FOR REINSURANCE OUTSIDE SINGAPORE	NET	GROSS	RECOVERED FROM REINSURANCE OUTSIDE SINGAPORE	NET	GROSS	RECOVERED FROM REINSURANCE OUTSIDE SINGAPORE	NET
	1*	2	3=1-2	4*	5	6=4-5	7*	8	9=7-8	10*	11	12=10-11
2002	4,729.6	1,186.1	3,543.5	2,198.0	539.3	1,658.7	2,158.4	423.4	1,735.0	995.4	165.5	829.9
2003	4,912.0	1,148.0	3,764.0	2,331.0	531.5	1,799.5	2,082.6	495.7	1,586.9	1,019.7	242.8	776.9
2004	4,885.0	1,207.8	3,677.2	2,163.6	462.8	1,700.8	2,142.1	614.7	1,527.4	1,034.4	300.2	734.2
2005	5,034.6	1,248.6	3,786.0	2,275.1	501.4	1,773.7	2,296.9	498.7	1,798.2	855.5	102.4	753.1
2006 P	4,543.6	907.4	3,636.2	2,285.8	451.6	1,834.2	1,925.5	255.8	1,669.7	979.1	120.4	858.7
2005 I	1,324.2	284.5	1,039.7	644.3	136.9	507.4	607.8	177.3	430.5	204.0	27.9	176.1
II	1,292.0	282.3	1,009.7	542.0	100.7	441.3	498.4	88.2	410.2	194.4	21.5	172.9
III	1,121.6	253.8	867.8	533.0	108.4	424.6	650.6	128.1	522.5	220.9	19.8	201.1
IV	1,296.8	428.0	868.8	555.8	155.4	400.4	540.1	105.1	435.0	236.2	33.2	203.0
2006 I	1,230.1	242.6	987.5	630.4	123.2	507.2	477.2	65.7	411.5	222.3	33.6	188.7
II	1,192.4	236.5	955.9	545.5	97.8	447.7	438.7	46.2	392.5	223.5	14.8	208.7
III	1,079.1	198.3	880.8	549.0	99.1	449.9	550.7	62.8	487.9	273.7	32.2	241.5
IV P	1,042.0	230.0	812.0	560.9	131.5	429.4	458.9	81.1	377.8	259.6	39.8	219.8

Note : Singapore operations refer to the companies' total operations in Singapore including that of the Singapore Insurance Fund.

Columns 1, 4, 7, & 10 Gross premium/claims for insurance and reinsurance companies less premiums paid for/recovered from reinsurance in Singapore.

Table II.7 Life Insurance Companies: New Business

PERIOD	INDIVIDUAL POLICIES				GROUP POLICIES			
	NO. OF POLICIES	SUMS INSURED	PREMIUMS		NO. OF POLICIES	NO. OF LIVES INSURED	SUMS INSURED	PREMIUMS
			SINGLE	OTHER				
	S\$ MILLION				S\$ MILLION			
1	2	3	4	5	6	7	8	
2002	1,423,733	27,886.3	5,911.1	647.6	2,579	741,477	14,125.2	74.7
2003	647,922	25,798.4	4,786.4	453.9	2,653	753,325	13,519.9	45.9
2004	700,077	29,404.8	6,076.7	479.1	4,994	782,674	17,828.2	70.8
2005	2,736,065	110,087.7	5,351.9	788.0	5,728	877,975	21,430.2	96.4
2006 P	886,026	41,314.4	6,871.0	646.0	5,659	745,876	18,614.3	94.4
2005 I	144,139	6,047.7	888.7	131.4	1,411	256,155	6,429.8	27.9
II	167,726	7,057.8	1,141.6	149.6	1,615	345,445	9,123.0	25.6
III	1,847,082	87,165.2	1,687.8	299.2	1,459	98,038	3,724.1	17.1
IV	577,118	9,817.0	1,633.8	207.8	1,243	178,337	2,153.3	25.8
2006 I	211,825	12,884.1	1,731.8	126.8	1,233	158,850	4,265.3	21.8
II	217,040	8,717.6	1,693.6	146.6	1,634	146,526	5,487.6	25.8
III	222,919	9,242.1	1,556.0	177.7	1,511	290,376	6,533.9	30.3
IV P	234,242	10,470.6	1,889.6	194.9	1,281	150,124	2,327.5	16.5

Table II.8 Life Insurance Companies: Business In Force

END OF PERIOD	INDIVIDUAL POLICIES			GROUP POLICIES			
	NO. OF POLICIES	SUMS INSURED	PREMIUMS	NO. OF POLICIES	NO. OF LIVES INSURED	SUMS INSURED	PREMIUMS
		S\$ MILLION				S\$ MILLION	
	1	2	3	4	5	6	7
2002	5,874,846	239,704.8	5,244.9	13,603	2,200,185	61,569.8	220.7
2003	6,120,538	249,822.2	5,345.6	13,975	2,282,995	65,528.2	202.6
2004	6,901,529	262,830.4	5,580.1	19,017	2,915,581	68,434.4	277.9
2005	9,203,457	353,576.4	6,034.1	22,586	3,219,599	77,455.3	343.5
2006 P	9,500,296	370,747.8	6,343.5	23,880	3,463,560	86,377.6	364.8
2005 I	6,950,941	264,510.1	5,624.3	19,304	2,949,834	69,698.8	297.7
II	7,042,879	267,241.9	5,701.0	22,130	3,166,542	77,793.2	320.4
III	8,763,463	349,250.0	5,917.4	22,553	3,188,654	77,613.2	328.3
IV	9,203,457	353,576.4	6,034.1	22,586	3,219,599	77,455.3	343.5
2006 I	9,262,973	360,591.5	6,095.2	22,960	3,212,899	79,341.8	336.9
II	9,336,325	363,173.0	6,136.5	23,325	3,264,947	81,602.7	347.9
III	9,407,689	366,635.6	6,246.6	23,592	3,400,969	85,373.3	356.3
IV P	9,500,296	370,747.8	6,343.5	23,880	3,463,560	86,377.6	364.8

Table III.1A Exchange Rates

PERIOD	S\$ PER UNIT OF			S\$ PER 100 UNITS OF						
	US DOLLAR	POUND STERLING	EURO	SWISS FRANC	JAPANESE YEN	MALAYSIAN RINGGIT	HONG KONG DOLLAR	AUSTRALIAN DOLLAR	CHINESE RENMINBI	INDIAN RUPEE
	1	2	3	4	5	6	7	8	9	10
2002	1.7365	2.7839	1.8193	125.16	1.4632	45.70	22.27	98.20	20.98	-
2003	1.7008	3.0294	2.1388	137.12	1.5909	44.76	21.91	127.60	20.55	-
2004	1.6338	3.1455	2.2243	144.10	1.5916	42.99	21.02	127.23	19.74	-
2005	1.6642	2.8717	1.9754	126.91	1.4189	44.03	21.46	122.07	20.63	-
2006	1.5336	3.0102	2.0176	125.56	1.2887	43.43	19.73	121.32	19.64	3.4713
2006 SEP	1.5869	2.9792	2.0168	127.32	1.3469	43.07	20.37	118.62	20.07	3.4549
OCT	1.5625	2.9688	1.9867	125.03	1.3295	42.83	20.09	120.17	19.83	3.4715
NOV	1.5442	3.0079	2.0329	127.71	1.3284	42.68	19.86	121.14	19.69	3.4500
DEC	1.5336	3.0102	2.0176	125.56	1.2887	43.43	19.73	121.32	19.64	3.4713
2007 JAN	1.5369	3.0175	1.9918	122.72	1.2642	43.89	19.69	118.74	19.77	3.4819
FEB	1.5306	3.0053	2.0231	125.54	1.2922	43.66	19.59	120.57	19.78	3.4508
2006 SEP 1	1.5722	2.9930	2.0134	127.73	1.3411	42.73	20.21	120.21	19.77	3.3782
8	1.5692	2.9404	1.9965	126.20	1.3496	42.94	20.18	118.96	19.73	3.4013
15	1.5804	2.9819	2.0104	126.22	1.3434	43.01	20.31	119.38	19.90	3.4275
22	1.5838	3.0132	2.0260	127.46	1.3605	43.08	20.35	119.74	20.01	3.4513
29	1.5869	2.9792	2.0168	127.32	1.3469	43.07	20.37	118.62	20.07	3.4549
OCT 6	1.5858	2.9762	2.0117	126.59	1.3432	42.98	20.37	118.32	20.05	3.4723
13	1.5832	2.9478	1.9904	124.93	1.3276	43.00	20.33	118.93	20.03	3.4799
20	1.5723	2.9514	1.9869	125.06	1.3288	42.77	20.19	119.32	19.91	3.4735
27	1.5659	2.9610	1.9892	124.96	1.3213	42.85	20.12	119.71	19.85	3.4640
NOV 3	1.5607	2.9784	1.9944	125.34	1.3325	42.78	20.07	120.85	19.82	3.4794
10	1.5579	2.9751	2.0033	125.76	1.3260	42.78	20.01	119.72	19.81	3.5123
17	1.5619	2.9479	1.9964	125.02	1.3198	42.70	20.06	119.67	19.84	3.4678
24	1.5495	2.9696	2.0083	126.66	1.3332	42.62	19.91	120.24	19.73	3.4620
DEC 1	1.5429	3.0363	2.0460	128.91	1.3346	42.89	19.84	121.97	19.70	3.4541
8	1.5402	3.0236	2.0465	128.82	1.3367	43.31	19.83	121.63	19.68	3.4480
15	1.5401	3.0206	2.0251	126.81	1.3066	43.40	19.82	120.42	19.70	3.4458
22	1.5396	3.0229	2.0310	126.67	1.3020	43.58	19.80	120.97	19.69	3.4501
29	1.5336	3.0102	2.0176	125.56	1.2887	43.43	19.73	121.32	19.64	3.4713
2007 JAN 5	1.5364	2.9788	2.0088	124.74	1.2981	43.70	19.73	120.30	19.68	3.4678
12	1.5473	3.0110	1.9959	123.93	1.2831	43.98	19.84	120.70	19.84	3.4678
19	1.5364	3.0361	1.9967	123.33	1.2670	43.87	19.67	121.30	19.76	3.4639
26	1.5394	3.0254	1.9898	123.19	1.2668	43.93	19.72	119.20	19.78	3.4907
FEB 2	1.5364	3.0226	2.0007	123.49	1.2725	43.89	19.69	118.70	19.80	3.4851
9	1.5323	3.0022	1.9981	122.84	1.2637	43.86	19.61	119.63	19.77	3.4766
16	1.5339	2.9943	2.0152	124.26	1.2848	43.92	19.64	120.38	19.82	3.4949
23	1.5339	3.0008	2.0128	123.75	1.2619	43.88	19.64	120.92	19.79	3.4641

Notes : US\$ rates are the average of buying and selling interbank rates at noon. Rates for foreign currencies other than US\$ are cross rates derived from the rates of such foreign currencies against the US\$ and the US\$/S\$ rates. Rates in columns 1 to 10 are as at the end of the year or month or for the date indicated.

Table III.1A Exchange Rates (continued)

PERIOD	S\$ PER UNIT OF			S\$ PER 100 UNITS OF						
	US DOLLAR	POUND STERLING	EURO	SWISS FRANC	JAPANESE YEN	MALAYSIAN RINGGIT	HONG KONG DOLLAR	AUSTRALIAN DOLLAR	CHINESE RENMINBI	INDIAN RUPEE
	AVERAGE OF PERIOD									
	11	12	13	14	15	16	17	18	19	20
2002	1.7906	2.6885	1.6909	115.28	1.4309	47.12	22.96	97.37	21.63	-
2003	1.7422	2.8467	1.9703	129.57	1.5044	45.85	22.37	113.55	21.05	-
2004	1.6903	3.0963	2.1008	136.09	1.5634	44.48	21.70	124.43	20.42	-
2005	1.6646	3.0290	2.0719	133.83	1.5138	43.95	21.40	126.86	20.33	-
2006	1.5889	2.9261	1.9952	126.84	1.3667	43.31	20.45	119.67	19.93	3.5089
2006 SEP	1.5789	2.9809	2.0121	127.05	1.3487	43.00	20.29	119.49	19.90	3.4234
OCT	1.5788	2.9603	1.9930	125.35	1.3308	42.92	20.27	118.90	19.98	3.4722
NOV	1.5567	2.9746	2.0046	125.91	1.3277	42.72	20.00	120.18	19.79	3.4713
DEC	1.5405	3.0255	2.0351	127.46	1.3146	43.36	19.82	121.07	19.69	3.4514
2007 JAN	1.5379	3.0132	1.9981	123.70	1.2771	43.84	19.72	120.40	19.74	3.4704
FEB	1.5340	3.0063	2.0047	123.65	1.2717	43.87	19.64	119.91	19.79	3.4742
2006 SEP 1	1.5742	2.9895	2.0175	127.86	1.3445	42.78	20.24	119.96	19.77	3.3834
8	1.5689	2.9703	2.0103	127.13	1.3479	42.95	20.17	120.33	19.74	3.3918
15	1.5766	2.9547	2.0019	126.20	1.3421	42.93	20.26	118.63	19.84	3.4124
22	1.5855	2.9936	2.0159	126.90	1.3513	43.09	20.37	119.68	20.00	3.4448
29	1.5860	3.0026	2.0200	127.82	1.3552	43.07	20.37	119.17	20.05	3.4535
OCT 6	1.5850	2.9816	2.0138	126.92	1.3437	42.97	20.34	118.18	20.05	3.4652
13	1.5872	2.9554	1.9949	125.36	1.3295	42.99	20.37	118.35	20.07	3.4754
20	1.5785	2.9468	1.9814	124.51	1.3275	42.93	20.27	119.09	19.97	3.4827
27	1.5700	2.9552	1.9831	124.62	1.3213	42.79	20.17	119.65	19.88	3.4680
NOV 3	1.5603	2.9712	1.9892	125.16	1.3310	42.77	20.06	120.45	19.81	3.4702
10	1.5619	2.9742	1.9943	125.02	1.3256	42.81	20.07	120.24	19.84	3.4948
17	1.5582	2.9577	1.9980	125.26	1.3230	42.74	20.01	119.29	19.80	3.4548
24	1.5550	2.9623	2.0034	125.88	1.3258	42.68	19.97	120.09	19.78	3.4693
DEC 1	1.5469	3.0156	2.0387	128.46	1.3352	42.68	19.89	121.17	19.73	3.4609
8	1.5403	3.0364	2.0499	128.93	1.3365	43.20	19.82	121.34	19.68	3.4510
15	1.5412	3.0242	2.0364	127.82	1.3154	43.43	19.83	120.95	19.69	3.4412
22	1.5419	3.0243	2.0294	126.68	1.3050	43.43	19.83	120.83	19.72	3.4476
29	1.5375	3.0121	2.0193	125.81	1.2931	43.50	19.77	120.95	19.67	3.4686
2007 JAN 5	1.5332	2.9981	2.0208	125.34	1.2904	43.62	19.69	121.22	19.63	3.4597
12	1.5397	2.9833	1.9976	123.99	1.2897	43.80	19.75	120.24	19.73	3.4603
19	1.5389	3.0277	1.9934	123.45	1.2748	43.92	19.72	120.93	19.77	3.4740
26	1.5374	3.0341	1.9935	123.22	1.2667	43.89	19.70	120.40	19.77	3.4759
FEB 2	1.5377	3.0191	1.9955	123.07	1.2675	43.91	19.70	118.91	19.79	3.4820
9	1.5331	3.0134	1.9903	123.10	1.2705	43.86	19.63	119.20	19.77	3.4767
16	1.5372	3.0016	2.0071	123.55	1.2722	43.97	19.68	119.76	19.83	3.4855
23	1.5338	2.9978	2.0141	123.85	1.2692	43.88	19.63	120.98	19.79	3.4668

Notes : Rates in columns 11 to 20 are averages for the year or month or the week ending on the dates indicated.

Table III.1B Daily Exchange Rates and Forward Swap Points for US\$/S\$

PERIOD	EXCHANGE RATES										US\$/S\$ FORWARD SWAP POINTS		
	S\$ PER UNIT OF			S\$ PER 100 UNITS OF							1-MONTH	3-MONTH	6-MONTH
	US DOLLAR	POUND STERLING	EURO	SWISS FRANC	JAPANESE YEN	MALAYSIAN RINGGIT	HONG KONG DOLLAR	AUSTRALIAN DOLLAR	CHINESE RMB	INDIAN RUPEE			
	1	2	3	4	5	6	7	8	9	10	11*	12*	13*
2007 FEB													
1	1.5359	3.0159	2.0014	123.46	1.2721	43.88	19.68	119.06	19.80	3.4772	-21.54	-71.60	-143.31
2	1.5364	3.0226	2.0007	123.49	1.2725	43.89	19.69	118.70	19.80	3.4851	-21.96	-71.00	-144.00
5	1.5353	3.0159	1.9865	122.84	1.2705	43.86	19.66	118.76	19.77	3.4800	-22.03	-70.23	-143.46
6	1.5332	3.0071	1.9812	122.82	1.2751	43.86	19.64	118.82	19.77	3.4783	-22.12	-70.65	-144.00
7	1.5322	3.0189	1.9899	123.55	1.2743	43.86	19.62	119.07	19.78	3.4763	-21.99	-70.50	-144.00
8	1.5327	3.0226	1.9956	123.42	1.2687	43.85	19.61	119.75	19.78	3.4723	-21.70	-72.00	-144.29
9	1.5323	3.0022	1.9981	122.84	1.2637	43.86	19.61	119.63	19.77	3.4766	-21.33	-69.69	-142.00
12	1.5350	2.9977	1.9984	123.02	1.2587	43.92	19.64	118.84	19.79	3.4795	-21.06	-69.11	-142.13
13	1.5426	3.0058	1.9991	123.09	1.2704	44.11	19.74	119.17	19.88	3.4900	-21.14	-69.19	-140.81
14	1.5386	2.9955	2.0060	123.41	1.2688	43.97	19.69	120.06	19.84	3.4810	-21.62	-70.20	-143.25
15	1.5357	3.0146	2.0170	123.96	1.2782	43.92	19.67	120.34	19.81	3.4819	-21.92	-70.50	-144.25
16	1.5339	2.9943	2.0152	124.26	1.2848	43.92	19.64	120.38	19.82	3.4949	-22.30	-70.54	-144.12
21	1.5336	2.9963	2.0150	123.99	1.2784	43.88	19.63	120.66	19.79	3.4685	-22.00	-71.00	-144.08
22	1.5338	2.9964	2.0146	123.82	1.2672	43.89	19.63	121.37	19.79	3.4678	-21.97	-72.92	-144.12
23	1.5339	3.0008	2.0128	123.75	1.2619	43.88	19.64	120.92	19.79	3.4641	-22.00	-72.17	-143.25
26	1.5283	3.0014	2.0163	124.24	1.2647	43.77	19.57	121.09	19.73	3.4577	-23.66	-72.50	-145.13
27	1.5273	2.9999	2.0139	124.26	1.2678	43.74	19.55	121.30	19.71	3.4538	-25.50	-73.41	-148.50
28	1.5306	3.0053	2.0231	125.54	1.2922	43.66	19.59	120.57	19.78	3.4508	-25.50	-75.75	-147.75

Notes : US\$ rates are the average of buying and selling interbank rates at noon. Rates for foreign currencies other than US\$ are cross rates derived from the rates of such foreign currencies against the US\$ and the US\$/S\$ rates.

Columns 11-13 Source: The Association of Banks in Singapore (ABS) - Reuters is the official and exclusive calculating agent of the ABS fixing rates.

'-' = discount. These forward swap points are the average of buying and selling of the fixing rates.

To derive the forward rate for the US\$, the forward premium/discount should be added/subtracted from the US\$/S\$ spot exchange rate.

Table III.2 Foreign Exchange Market Turnover

PERIOD	IN MILLIONS OF S\$		IN MILLIONS OF US\$	
	TOTAL TURNOVER	DAILY AVERAGE	TOTAL TURNOVER	DAILY AVERAGE
	1*	2*	3*	4*
2002	42,970,779	171,198	24,090,519	95,978
2003	52,393,386	207,910	30,055,307	119,267
2004	66,143,928	261,438	39,181,134	154,866
2005	70,851,920	283,408	42,520,769	170,083
2006	74,970,624	299,882	47,377,937	189,512
2005 I	18,048,511	300,809	11,011,347	183,522
II	17,453,131	277,034	10,483,487	166,405
III	17,887,480	275,192	10,651,970	163,876
IV	17,462,798	281,658	10,373,965	167,322
2006 I	18,415,105	301,887	11,351,485	186,090
II	19,493,824	314,417	12,315,198	198,632
III	18,882,881	295,045	11,957,442	186,835
IV	18,178,814	288,553	11,753,812	186,568
2005 FEB	5,593,316	310,740	3,438,655	191,036
MAR	6,248,405	284,018	3,787,371	172,153
APR	5,850,131	278,578	3,551,130	169,101
MAY	5,621,214	281,061	3,378,540	168,927
JUN	5,981,786	271,899	3,553,817	161,537
JUL	5,325,082	253,575	3,203,828	152,563
AUG	6,149,715	279,533	3,651,633	165,983
SEP	6,412,683	291,486	3,796,509	172,569
OCT	6,037,886	287,518	3,568,702	169,938
NOV	6,018,980	300,949	3,556,896	177,845
DEC	5,405,932	257,425	3,248,367	154,684
2006 JAN	5,740,386	318,910	3,533,850	196,325
FEB	5,950,209	297,510	3,662,343	183,117
MAR	6,724,510	292,370	4,155,292	180,665
APR	5,711,918	300,627	3,608,059	189,898
MAY	6,938,682	330,413	4,401,600	209,600
JUN	6,843,224	311,056	4,305,539	195,706
JUL	6,032,257	287,250	3,823,450	182,069
AUG	6,427,147	292,143	4,086,177	185,735
SEP	6,423,477	305,880	4,047,815	192,753
OCT	5,887,579	280,361	3,768,050	179,431
NOV	6,449,291	293,150	4,176,461	189,839
DEC	5,841,944	292,097	3,809,301	190,465
2007 JAN	6,609,988	314,761	4,300,857	204,803
FEB P	6,608,972	367,165	4,317,896	239,883

Columns 1 to 4 Data have been revised from November 2005 to December 2006. Quarterly and annual data of the corresponding periods are also revised.

Table III.3 Domestic Interest Rates

END OF PERIOD	PER CENT PER ANNUM				
	INTERBANK			3-MONTH COMMERCIAL BILLS	3-MONTH US\$ SIBOR
	OVERNIGHT	1-MONTH	3-MONTH		
	1	2	3	4	6
2002	0.38	0.81	0.81	0.78	1.38
2003	0.63	0.63	0.75	0.77	1.15
2004	1.63	1.38	1.44	1.40	2.56
2005	3.25	3.19	3.25	3.21	4.54
2006	0.50	3.44	3.44	3.43	5.36
2006 SEP	3.50	3.44	3.44	3.46	5.37
OCT	3.25	3.56	3.50	3.51	5.38
NOV	3.13	3.44	3.44	3.43	5.37
DEC	0.50	3.44	3.44	3.43	5.36
2007 JAN	2.75	3.44	3.44	3.40	5.36
FEB	3.00	3.31	3.38	3.32	5.34
2006 SEP 1	3.25	3.50	3.50	3.45	5.39
8	3.00	3.44	3.50	3.42	5.40
15	3.00	3.44	3.44	3.41	5.39
22	3.38	3.50	3.50	3.46	5.37
29	3.50	3.44	3.44	3.46	5.37
OCT 6	3.25	3.38	3.44	3.43	5.37
13	3.25	3.50	3.50	3.46	5.38
20	3.13	3.50	3.50	3.51	5.38
27	3.50	3.50	3.50	3.46	5.38
NOV 3	3.38	3.50	3.50	3.49	5.37
10	3.13	3.50	3.50	3.51	5.38
17	3.31	3.44	3.50	3.46	5.38
24	3.00	3.44	3.44	3.46	5.37
DEC 1	3.13	3.44	3.44	3.39	5.37
8	3.13	3.38	3.38	3.40	5.35
15	3.13	3.38	3.44	3.40	5.37
22	3.13	3.41	3.41	3.40	5.37
29	0.50	3.44	3.44	3.43	5.36
2007 JAN 5	3.00	3.44	3.44	3.37	5.36
12	3.00	3.41	3.41	3.39	5.37
19	3.00	3.38	3.38	3.39	5.36
26	3.13	3.38	3.38	3.37	5.36
FEB 2	2.88	3.38	3.38	3.37	5.37
9	3.13	3.38	3.38	3.35	5.37
16	2.94	3.38	3.38	3.34	5.36
23	3.00	3.38	3.38	3.32	5.36

Notes : Interest rates at the end-period are as at the end of the year or month or at the date indicated.  
 Interbank rates are the closing offer rates quoted by money brokers.



Table III.4 Interest Rates of Banks and Finance Companies

PER CENT PER ANNUM

END OF PERIOD	BANKS					FINANCE COMPANIES					
	PRIME LENDING RATE	FIXED DEPOSITS			SAVINGS DEPOSITS	LOANS (EFFECTIVE RATES)		FIXED DEPOSITS			SAVINGS DEPOSITS
		3 MONTHS	6 MONTHS	12 MONTHS		HIRE PURCHASE OF NEW MOTOR VEHICLES FOR 3 YEARS	HOUSING LOANS FOR 15 YEARS	3 MONTHS	6 MONTHS	12 MONTHS	
2002	5.35	0.78	1.05	1.32	0.44	5.15	6.09	0.76	1.08	1.50	0.55
2003	5.30	0.40	0.52	0.70	0.24	4.36	5.98	0.44	0.60	0.79	0.31
2004	5.30	0.41	0.52	0.72	0.23	4.24	5.40	0.48	0.70	0.98	0.31
2005	5.30	0.56	0.66	0.86	0.30	4.96	5.56	0.83	1.06	1.56	0.42
2006	5.33	0.57	0.67	0.88	0.29	5.65	5.73	1.00	1.56	1.92	0.33
2005 FEB	5.30	0.41	0.52	0.72	0.23	4.11	5.40	0.64	0.81	1.10	0.31
MAR	5.30	0.41	0.52	0.72	0.23	4.09	5.40	0.85	0.98	1.31	0.31
APR	5.30	0.42	0.53	0.74	0.23	4.09	5.40	0.64	0.81	1.27	0.31
MAY	5.30	0.42	0.53	0.74	0.23	4.09	5.56	0.64	0.81	1.27	0.31
JUN	5.30	0.42	0.53	0.74	0.23	4.31	5.56	0.64	0.81	1.27	0.31
JUL	5.30	0.42	0.53	0.74	0.23	4.31	5.56	0.60	0.77	1.19	0.31
AUG	5.30	0.42	0.53	0.74	0.23	4.31	5.56	0.60	0.77	1.19	0.31
SEP	5.30	0.42	0.53	0.74	0.23	4.31	5.56	0.60	0.77	1.19	0.31
OCT	5.30	0.45	0.57	0.78	0.27	4.31	5.56	0.60	0.77	1.19	0.31
NOV	5.30	0.53	0.62	0.83	0.27	4.96	5.56	0.77	0.94	1.35	0.31
DEC	5.30	0.56	0.66	0.86	0.30	4.96	5.56	0.83	1.06	1.56	0.42
2006 JAN	5.30	0.56	0.66	0.86	0.30	4.96	5.56	0.85	1.60	1.93	0.42
FEB	5.30	0.57	0.66	0.87	0.30	4.96	5.56	0.85	1.15	1.60	0.33
MAR	5.30	0.57	0.67	0.88	0.30	5.48	5.56	0.85	1.15	1.60	0.33
APR	5.30	0.57	0.67	0.89	0.30	5.65	5.56	0.85	1.15	1.60	0.33
MAY	5.30	0.57	0.68	0.89	0.30	5.65	5.56	0.89	1.44	2.09	0.33
JUN	5.30	0.57	0.68	0.89	0.30	5.65	5.73	1.00	1.44	2.00	0.33
JUL	5.30	0.57	0.69	0.89	0.30	5.65	5.73	1.00	1.44	2.00	0.33
AUG	5.33	0.58	0.69	0.89	0.29	5.65	5.73	1.00	1.44	2.00	0.33
SEP	5.33	0.57	0.68	0.89	0.29	5.65	5.73	1.00	1.44	1.81	0.33
OCT	5.33	0.57	0.67	0.87	0.29	5.65	5.73	1.00	1.44	1.81	0.33
NOV	5.33	0.57	0.67	0.88	0.29	5.65	5.73	1.00	1.44	1.81	0.33
DEC	5.33	0.57	0.67	0.88	0.29	5.65	5.73	1.00	1.56	1.92	0.33
2007 JAN	5.33	0.57	0.67	0.87	0.29	5.65	5.73	1.00	1.56	1.86	0.33
FEB	5.33	0.57	0.67	0.87	0.29	5.65	5.73	1.00	1.56	1.86	0.33

Note : Figures refer to average rates compiled from that quoted by 10 leading banks and finance companies.

Table III.5 Singapore Government Securities (SGS): Issuance, Redemption and Outstanding Amount

S\$ MILLION

PERIOD	ISSUANCE		REDEMPTION		OUTSTANDING AS AT END OF PERIOD	
	T/BILLS	BONDS	T/BILLS	BONDS	T/BILLS	BONDS
	1	2	3	4	5	6
2002	50,900	8,400	48,800	6,080	16,750	41,300
2003	53,900	9,600	53,450	5,050	17,200	45,850
2004	63,000	13,900	60,000	7,750	20,200	52,000
2005	70,900	12,900	69,800	8,200	21,300	56,700
2006	81,800	8,600	77,300	5,300	25,800	60,000
2005 I	15,800	3,800	14,900	4,600	21,100	51,200
2005 II	19,500	2,300	18,300	0	22,300	53,500
2005 III	16,900	5,700	16,900	0	22,300	59,200
2005 IV	18,700	1,100	19,700	3,600	21,300	56,700
2006 I	16,400	3,500	16,400	2,700	21,300	57,500
2006 II	21,400	2,100	19,000	0	23,700	59,600
2006 III	20,800	3,000	18,800	2,600	25,700	60,000
2006 IV	23,200	0	23,100	0	25,800	60,000
2005 FEB	4,800	2,600	4,500	4,600	20,900	50,000
2005 MAR	6,200	1,200	6,000	0	21,100	51,200
2005 APR	5,200	2,300	4,800	0	21,500	53,500
2005 MAY	7,800	0	7,300	0	22,000	53,500
2005 JUN	6,500	0	6,200	0	22,300	53,500
2005 JUL	5,200	1,400	5,200	0	22,300	54,900
2005 AUG	5,200	1,600	5,200	0	22,300	56,500
2005 SEP	6,500	2,700	6,500	0	22,300	59,200
2005 OCT	5,200	1,100	5,200	3,600	22,300	56,700
2005 NOV	5,200	0	8,000	0	19,500	56,700
2005 DEC	8,300	0	6,500	0	21,300	56,700
2006 JAN	4,800	0	5,200	0	20,900	56,700
2006 FEB	5,100	2,400	5,200	2,700	20,800	56,400
2006 MAR	6,500	1,100	6,000	0	21,300	57,500
2006 APR	5,200	1,000	4,800	0	21,700	58,500
2006 MAY	8,400	0	7,700	0	22,400	58,500
2006 JUN	7,800	1,100	6,500	0	23,700	59,600
2006 JUL	6,400	1,000	5,200	0	24,900	60,600
2006 AUG	8,000	1,200	7,300	2,600	25,600	59,200
2006 SEP	6,400	800	6,300	0	25,700	60,000
2006 OCT	8,800	0	6,400	0	28,100	60,000
2006 NOV	8,000	0	10,300	0	25,800	60,000
2006 DEC	6,400	0	6,400	0	25,800	60,000
2007 JAN	7,200	0	6,400	0	26,600	60,000
2007 FEB	7,200	1,700	6,400	2,600	27,400	59,100

Table III.6 Singapore Government Securities (SGS): Prices and Yields

PER CENT PER ANNUM  
S\$ PER \$100 OF PRINCIPAL AMOUNT

END OF PERIOD	OFFER OVERNIGHT REPO	AVERAGE BUYING RATES OF GOVERNMENT SECURITIES DEALERS											
		BENCHMARK ISSUES											
		3-MONTH T-BILL YIELD	1-YEAR T-BILL YIELD	2-YEAR BOND		5-YEAR BOND		7-YEAR BOND		10-YEAR BOND		15-YEAR BOND	
		1	2	3	YIELD	PRICE	YIELD	PRICE	YIELD	PRICE	YIELD	PRICE	YIELD
2002	0.84	0.67	0.79	1.07	106.04	1.74	104.03	2.11	112.81	2.55	107.95	2.86	110.02
2003	0.57	0.71	0.83	1.01	105.95	2.74	107.66	3.19	108.35	3.75	88.10	4.05	99.40
2004	1.46	1.26	1.32	1.58	99.68	2.07	101.38	2.25	108.26	2.58	108.72	3.03	110.84
2005	3.19	2.65	2.85	2.69	99.89	3.01	106.75	3.14	102.12	3.21	103.06	3.41	98.12
2006	3.32	3.10	3.04	3.01	103.83	3.03	102.51	3.04	95.37	3.05	105.85	3.16	100.96
2006 SEP	3.35	3.22	3.18	2.95	104.54	3.10	102.30	3.15	94.56	3.20	104.64	3.29	99.51
OCT	3.64	3.35	3.15	3.03	104.18	3.11	102.21	3.14	94.70	3.19	104.70	3.27	99.74
NOV	3.13	2.99	2.93	2.98	104.06	3.01	102.60	3.01	95.49	3.02	106.10	3.10	101.62
DEC	3.32	3.10	3.04	3.01	103.83	3.03	102.51	3.04	95.37	3.05	105.85	3.16	100.96
2007 JAN	3.25	3.12	2.98	3.01	102.58	3.07	102.28	3.11	95.05	3.18	104.69	3.28	99.66
FEB	3.01	2.93	2.89	2.91	102.66	2.99	102.55	3.02	95.58	3.08	105.49	3.17	100.85
2006 SEP 1	3.30	3.25	3.25	3.12	104.42	3.24	101.69	3.29	93.69	3.37	103.24	3.44	97.90
8	3.13	3.16	3.21	3.10	104.41	3.24	101.70	3.29	93.72	3.37	103.20	3.44	97.94
15	3.21	3.18	3.20	3.03	104.49	3.20	101.89	3.24	94.03	3.28	103.96	3.32	99.19
22	3.50	3.23	3.22	2.98	104.53	3.08	102.38	3.12	94.73	3.14	105.21	3.21	100.43
29	3.35	3.22	3.18	2.95	104.54	3.10	102.30	3.15	94.56	3.20	104.64	3.29	99.51
OCT 6	3.20	3.25	3.04	2.86	104.64	3.00	102.73	3.04	95.19	3.08	105.68	3.17	100.91
13	3.54	3.31	3.09	2.95	104.44	3.11	102.26	3.15	94.59	3.18	104.80	3.29	99.57
20	3.50	3.34	3.14	3.02	104.28	3.13	102.15	3.16	94.54	3.21	104.54	3.33	99.13
27	3.57	3.32	3.14	3.04	104.19	3.12	102.19	3.15	94.64	3.21	104.56	3.29	99.53
NOV 3	3.56	3.33	3.13	3.05	104.13	3.07	102.41	3.07	95.08	3.13	105.23	3.20	100.58
10	3.40	3.33	3.11	3.09	104.03	3.05	102.47	3.04	95.30	3.10	105.47	3.17	100.88
17	3.34	3.25	3.03	3.05	104.04	3.06	102.42	3.05	95.25	3.08	105.59	3.17	100.83
24	3.24	3.04	2.98	3.04	104.01	3.04	102.49	3.04	95.33	3.06	105.79	3.15	101.09
DEC 1	3.13	2.96	2.90	2.94	104.12	2.99	102.70	2.99	95.59	3.01	106.25	3.09	101.82
8	3.21	2.93	2.87	2.95	104.06	2.98	102.75	2.99	95.63	3.04	105.98	3.09	101.80
15	3.29	3.06	2.96	2.98	103.96	3.01	102.61	3.02	95.46	3.07	105.70	3.13	101.31
22	3.19	3.12	3.01	2.99	103.90	2.99	102.66	3.00	95.56	3.03	105.97	3.12	101.46
29	3.32	3.10	3.04	3.01	103.83	3.03	102.51	3.04	95.37	3.05	105.85	3.16	100.96
2007 JAN 5	3.13	3.03	2.90	2.93	103.90	2.94	102.85	2.96	95.84	2.97	106.50	3.09	101.80
12	3.20	3.06	2.96	2.98	103.78	3.02	102.53	3.03	95.44	3.05	105.76	3.19	100.68
19	3.13	3.08	2.95	3.00	103.70	3.03	102.47	3.06	95.28	3.11	105.30	3.23	100.22
26	3.15	3.09	2.95	3.01	103.63	3.06	102.33	3.10	95.08	3.18	104.67	3.29	99.58
FEB 2	3.20	3.13	2.97	3.01	102.57	3.07	102.26	3.11	95.03	3.19	104.59	3.29	99.61
9	3.17	3.09	2.96	2.96	102.63	3.06	102.32	3.10	95.09	3.18	104.63	3.29	99.61
16	3.14	3.08	2.95	2.93	102.67	3.06	102.31	3.11	95.05	3.19	104.57	3.28	99.66
23	3.13	3.05	2.95	2.93	102.63	3.08	102.20	3.14	94.89	3.24	104.14	3.34	99.07

Notes : Figures before 2000 are the modes of closing bid prices quoted by SGS primary dealers.  
 Figures after 2000 are the average of closing bid rates quoted by SGS primary dealers.  
 Overnight repo rates are closing offer rates quoted by SGS primary dealers.

Table III.7 Singapore Government Securities (SGS): Average Daily Turnover Volume

PERIOD	OUTRIGHT PURCHASES AND SALES										REPO
	TOTAL MARKET	ORIGINAL BILL MATURITIES				BENCHMARK					TRANSACTIONS
		ALL T-BILLS	3-MONTH T-BILL	1-YEAR T-BILL	ALL BONDS	2-YEAR BOND	5-YEAR BOND	7-YEAR BOND	10-YEAR BOND	15-YEAR BOND	TOTAL MARKET
		1=2+5	2=3+4	3	4	5	6	7	8	9	10
2002	1,967	185	149	36	1,782	91	221	285	205	163	2,508
2003	2,618	161	132	29	2,457	85	298	321	310	200	2,456
2004	1,690	263	228	35	1,427	74	188	202	178	67	2,169
2005	1,669	270	238	32	1,399	88	123	145	228	103	2,317
2006	1,693	294	254	40	1,399	114	110	168	111	105	3,133
2006 SEP	2,269	306	257	49	1,963	105	81	169	203	231	3,205
OCT	2,001	379	328	51	1,622	56	68	116	176	146	3,252
NOV	1,389	244	232	12	1,145	117	83	72	50	117	3,065
DEC	1,337	321	289	32	1,016	127	55	66	78	52	2,615
2007 JAN	1,871	331	292	39	1,540	237	185	96	132	78	2,815
FEB	1,579	438	403	35	1,141	271	61	102	65	61	2,991
2006 SEP 1	2,040	172	156	16	1,868	94	114	283	226	159	3,900
8	1,954	230	215	15	1,724	55	75	98	116	188	2,853
15	1,970	341	335	6	1,629	87	72	145	169	236	3,144
22	2,267	327	312	15	1,940	128	77	253	282	155	3,146
29	2,802	378	216	162	2,424	136	91	159	268	314	3,472
OCT 6	3,217	475	282	193	2,742	162	115	240	182	229	3,535
13	1,638	307	301	6	1,331	23	85	177	237	205	3,250
20	2,017	311	302	9	1,706	37	16	54	189	78	3,135
27	1,313	549	544	5	764	11	45	14	151	60	3,315
NOV 3	1,382	169	159	10	1,213	24	131	29	54	80	3,004
10	2,026	227	203	24	1,799	164	142	106	66	159	2,977
17	1,242	248	240	8	994	142	52	110	80	98	2,880
24	1,244	297	288	9	947	150	44	41	26	119	3,021
DEC 1	856	216	211	5	640	39	28	59	16	132	3,084
8	1,281	303	302	1	978	88	28	99	61	49	2,926
15	1,288	469	348	121	819	120	43	56	54	85	2,701
22	1,339	235	235	0	1,104	168	68	41	65	32	2,363
29	1,608	322	312	10	1,286	167	99	60	157	28	2,601
2007 JAN 5	1,771	484	482	2	1,287	150	113	55	186	28	3,185
12	1,696	458	314	144	1,238	149	177	102	192	88	2,629
19	1,198	259	254	5	939	100	119	80	108	55	2,756
26	2,291	326	312	14	1,965	267	260	59	81	93	3,108
FEB 2	2,759	457	448	9	2,302	546	204	259	72	84	2,559
9	1,204	476	436	40	728	139	8	126	29	23	2,787
16	1,534	370	366	4	1,164	405	57	31	32	108	3,459
23	1,427	330	313	17	1,097	404	38	30	94	20	2,506

Note : Figures refer to the volume of transactions computed on a per working day basis of the stated period.

Table III.8 Singapore Exchange Securities Trading Ltd (SGX-ST): Price Index, Number of Listed Companies, Turnover and Capitalisation

END OF PERIOD	STRAITS TIMES INDEX	SINGAPORE REGIONAL INDEX	TOTAL NUMBER OF COMPANIES LISTED	S\$ MILLION				
				TURNOVER VALUE	MARKET CAPITALISATION <sup>1/</sup>			DEBENTURES, LOAN STOCKS & WARRANTS (DBL & TSR)
					MAIN & FOREIGN BOARDS	SESDAQ	TOTAL	
1*	2	3	4*	5*	6	7=5+6	8*	
2002	1,341.07	605.76	516	118,702.3	404,454.0	3,047.4	407,501.4	406,104.7
2003	1,764.52	834.83	566	161,952.3	513,022.2	6,079.3	519,101.5	420,565.2
2004	2,066.14	1,038.05	639	183,422.5	604,421.2	5,796.0	610,217.2	404,875.7
2005	2,347.34	1,130.95	664	205,164.4	422,029.1	5,876.2	427,905.3	347,969.8
2006	2,985.83	1,523.46	708	300,017.6	579,768.5	9,842.0	589,610.5	411,850.4
2005 FEB	2,119.40	1,072.13	648	15,227.4	614,607.8	5,232.3	619,840.1	309,306.4
MAR	2,141.43	1,069.49	653	16,028.5	619,542.3	5,798.2	625,340.5	316,289.6
APR	2,125.25	1,059.54	658	13,325.4	627,742.2	5,446.4	633,188.6	311,425.9
MAY	2,161.77	1,058.13	633	13,962.8	378,047.2	5,103.3	383,150.5	317,325.0
JUN	2,212.66	1,063.10	636	16,839.8	392,983.1	5,376.2	398,359.3	327,275.6
JUL	2,352.56	1,141.61	638	22,126.8	418,132.4	5,741.2	423,873.6	333,130.1
AUG	2,275.43	1,082.91	645	23,213.6	406,570.4	5,517.6	412,088.0	341,041.0
SEP	2,305.14	1,092.75	648	18,791.3	412,558.6	6,042.2	418,600.8	351,336.7
OCT	2,216.77	1,042.63	652	20,795.3	395,408.0	5,921.3	401,329.3	356,374.0
NOV	2,300.25	1,084.87	660	15,649.5	409,187.2	6,000.8	415,188.0	365,303.2
DEC	2,347.34	1,130.95	664	13,426.0	422,029.1	5,876.2	427,905.3	347,969.8
2006 JAN	2,412.08	1,177.36	668	20,992.7	436,731.8	6,251.9	442,983.7	342,350.4
FEB	2,481.96	1,210.63	671	24,401.5	450,968.0	6,192.7	457,160.7	350,176.9
MAR	2,533.40	1,222.60	676	30,381.2	469,721.8	5,966.1	475,687.9	366,307.5
APR	2,610.71	1,289.68	683	26,590.2	480,953.0	6,793.4	487,746.4	362,898.5
MAY	2,383.87	1,206.97	689	30,356.4	448,599.1	6,203.7	454,802.8	369,175.7
JUN	2,435.39	1,222.26	691	20,810.9	458,401.8	7,749.7	466,151.5	377,535.8
JUL	2,445.43	1,254.59	693	19,136.8	464,348.1	7,813.9	472,162.0	373,818.3
AUG	2,482.39	1,244.50	693	21,678.9	472,727.7	8,682.8	481,410.5	378,622.1
SEP	2,568.86	1,276.59	695	20,649.5	488,917.9	8,314.5	497,232.4	392,876.1
OCT	2,701.75	1,362.58	699	27,444.2	515,355.1	8,569.1	523,924.2	397,318.8
NOV	2,838.53	1,425.77	704	30,477.3	541,550.5	9,111.9	550,662.4	401,997.7
DEC	2,985.83	1,523.46	708	27,098.2	579,768.5	9,842.0	589,610.5	411,850.4
2007 JAN	3,125.56	1,567.28	709	42,743.7	616,906.5	15,124.3	632,030.8	420,480.4
FEB	3,104.15	1,552.12	713	40,503.2	619,387.8	11,852.3	631,240.1	430,346.4

1/ In May 2005, Singapore Exchange Securities Trading Limited (SGX-ST) changed its market capitalisation on computation methodology, which is stated below. For more information, please refer to SGX's website [www.sgx.com.sg](http://www.sgx.com.sg).

SGX-ST Market Capitalisation = Market Capitalisation of All Domestic Companies + Market Capitalisation of Primary-Listed Foreign Companies + Market Capitalisation of Secondary-Listed Foreign Companies which majority of trading activity takes place in SGX-ST.

Column 1 The Straits Times Index was introduced on 29 August 1998 to replace the Straits Times Industrial Index. Daily data is available on the SGX website at [www.sgx.com.sg](http://www.sgx.com.sg).

Column 4 Data is for the period stated and includes trades done on both cash and ready basis for SGX-ST Main Board, SGX Sesdaq and Clob International.

Column 5 Includes debentures, loan stocks and warrants of companies whose ordinary shares are listed on SGX-ST.

Column 8 Refers to DBL and TSR of foreign-incorporated companies whose ordinary shares are not listed on SGX-ST.

Table III.9 Singapore Exchange Derivatives Trading Ltd (SGX-DT): Turnover and Open Interest (Futures and Options)

PERIOD	TOTAL TURNOVER			AVERAGE DAILY TURNOVER			OPEN INTEREST		
	TOTAL	FUTURES	OPTIONS	TOTAL	FUTURES	OPTIONS	TOTAL	FUTURES	OPTIONS
	FOR THE PERIOD						END OF PERIOD		
	1=2+3	2	3	4=5+6	5	6	7=8+9	8	9
2002	32,887,395	32,623,190	264,205	129,352	128,283	1,069	562,504	531,021	31,483
2003	35,648,224	35,356,776	291,448	140,647	139,460	1,187	650,706	620,332	30,374
2004	28,418,757	28,169,379	249,378	112,480	111,469	1,011	802,619	786,983	15,636
2005	26,026,128	25,867,661	158,467	105,148	104,499	649	882,254	854,634	27,620
2006	36,597,743	36,201,370	396,373	147,288	145,577	1,711	871,718	827,560	44,158
2005 FEB	1,495,529	1,485,746	9,783	90,674	90,159	515	975,986	957,299	18,687
MAR	2,381,702	2,372,404	9,298	106,503	106,082	421	857,323	846,984	10,339
APR	1,811,936	1,798,998	12,938	89,766	89,119	647	866,432	852,556	13,876
MAY	1,684,686	1,678,281	6,405	83,839	83,502	337	952,047	937,710	14,337
JUN	2,335,947	2,324,821	11,126	106,179	105,674	506	809,998	798,929	11,069
JUL	1,829,364	1,822,483	6,881	90,489	90,145	344	936,268	923,320	12,948
AUG	2,260,104	2,244,074	16,030	99,990	99,293	697	1,033,512	1,013,811	19,701
SEP	2,694,730	2,674,033	20,697	130,961	129,926	1,035	958,448	938,271	20,177
OCT	2,569,569	2,550,405	19,164	127,333	126,375	958	932,171	909,221	22,950
NOV	2,308,685	2,293,257	15,428	110,575	109,803	771	1,007,090	978,969	28,121
DEC	3,052,954	3,030,862	22,092	143,360	142,308	1,052	882,254	854,634	27,620
2006 JAN	2,851,291	2,827,377	23,914	151,711	150,452	1,259	887,469	852,356	35,113
FEB	3,055,733	3,025,752	29,981	159,941	158,442	1,499	971,114	935,138	35,976
MAR	3,482,017	3,452,616	29,401	155,386	154,050	1,336	881,870	847,999	33,871
APR	2,688,658	2,656,610	32,048	137,317	135,714	1,602	1,055,709	1,010,735	44,974
MAY	3,207,308	3,166,353	40,955	154,978	152,930	2,048	1,079,748	1,024,986	54,762
JUN	3,918,758	3,883,100	35,658	178,125	176,505	1,621	953,444	909,912	43,532
JUL	2,598,061	2,553,251	44,810	126,911	124,688	2,223	976,691	933,360	43,331
AUG	2,762,464	2,720,649	41,815	120,501	118,683	1,818	949,205	900,424	48,781
SEP	3,562,260	3,535,390	26,870	174,715	173,380	1,335	894,891	856,013	38,878
OCT	2,671,290	2,648,462	22,828	131,061	129,964	1,098	919,812	878,739	41,073
NOV	2,743,420	2,720,608	22,812	130,738	129,642	1,096	982,362	938,545	43,817
DEC	3,056,483	3,011,202	45,281	146,085	143,929	2,156	871,718	827,560	44,158
2007 JAN	2,921,926	2,883,827	38,099	143,081	141,244	1,837	943,893	894,747	49,146
FEB	2,719,653	2,674,169	45,484	166,935	164,560	2,375	1,088,698	1,009,706	78,992

Table IV.1 Gross Domestic Product by Sector

PERIOD	YEAR-ON-YEAR % CHANGE									
	TOTAL GDP	MANUFACTURING	of which							
			FINANCIAL & BUSINESS SERVICES TOTAL	FINANCIAL SERVICES	BUSINESS SERVICES	CONSTRUCTION	WHOLESALE & RETAIL TRADE	HOTELS & RESTAURANTS	TRANSPORT & STORAGE	INFORMATION & COMMUNICATIONS
1	2	3	4	5	6	7	8	9	9	
2002	4.2	8.4	1.5	-2.6	5.3	-14.0	8.3	-3.5	4.9	5.8
2003	3.1	3.0	3.5	9.3	-1.4	-8.9	10.6	-9.9	-1.7	4.6
2004	8.8	13.8	2.6	4.4	1.0	-5.5	17.4	11.7	10.4	6.0
2005	6.6	9.5	6.7	7.6	5.9	0.7	9.6	4.3	4.2	5.5
2006 P	7.9	11.5	7.5	9.2	5.8	2.7	10.3	5.1	4.3	4.6
2005 I	3.7	3.2	3.5	3.7	3.3	-1.3	9.0	2.4	4.1	5.6
II	6.1	5.8	6.6	9.3	4.1	-0.6	10.4	5.9	4.2	5.6
III	8.2	13.6	8.7	9.9	7.7	-0.1	11.5	4.0	4.0	5.2
IV	8.3	14.5	8.1	7.6	8.5	4.9	7.5	5.0	4.6	5.6
2006 I	10.1	18.6	7.4	8.7	6.1	-0.7	14.8	6.2	5.3	5.1
II	8.0	11.9	8.1	9.6	6.6	0.9	9.5	3.8	4.0	3.7
III	7.0	9.5	6.2	7.4	5.1	5.8	10.4	4.4	4.0	3.6
IV P	6.6	7.7	8.2	11.1	5.4	4.7	6.9	6.1	4.0	6.0

Source: Singapore Department of Statistics

Note: The industries are classified according to Singapore Standard Industrial Classification 2005.

Table IV.2 Gross Domestic Product by Expenditure

PERIOD	YEAR-ON-YEAR % CHANGE								
	TOTAL DEMAND	DOMESTIC DEMAND							EXTERNAL DEMAND
		TOTAL	CONSUMPTION				GROSS FIXED CAPITAL FORMATION		
			TOTAL	PRIVATE	PUBLIC	TOTAL	PRIVATE	PUBLIC	
1	2	3	4	5	6	7	8	9	
2002	5.7	2.0	5.3	5.1	6.3	-11.4	-9.9	-16.3	7.3
2003	7.5	-8.7	1.3	1.2	1.6	-3.3	-2.5	-6.1	14.1
2004	18.0	11.2	4.5	5.6	0.0	10.2	16.0	-11.1	20.2
2005	9.6	4.0	3.8	3.1	6.8	0.1	0.6	-2.4	11.3
2006 P	9.5	6.6	4.2	2.5	11.2	11.5	16.3	-11.8	10.4
2005 I	9.2	3.9	4.8	3.4	9.1	-7.6	-12.4	11.1	11.0
II	6.8	1.8	2.5	3.3	-1.3	-5.5	-5.4	-6.3	8.4
III	8.0	2.7	2.9	2.3	6.0	-3.3	-1.7	-12.0	9.5
IV	14.2	7.7	4.9	3.4	11.4	18.3	23.8	-6.1	16.1
2006 I	13.2	4.4	5.2	2.4	13.4	9.5	17.7	-16.0	16.0
II	11.2	3.3	3.4	2.3	8.7	8.3	11.8	-12.2	13.6
III	10.0	10.3	5.3	2.4	18.7	10.3	13.1	-6.4	9.9
IV P	4.5	8.6	3.0	2.7	3.8	17.1	21.8	-10.6	3.4

Source: Singapore Department of Statistics



Table IV.3 Consumer Price Index

PERIOD	ALL ITEMS	FOOD	HOUSING	CLOTHING	TRANSPORT & COMM.	EDUCATION & STATIONERY	HEALTH	MISC-ELLANEOUS	ALL ITEMS	FOOD	HOUSING	CLOTHING	TRANSPORT & COMM.	EDUCATION & STATIONERY	HEALTH	MISC-ELLANEOUS
	2004 = 100								YEAR-ON-YEAR % CHANGE							
	1	2	3	4	5	6	7	8	9	10	11	12	13	14	15	16
2002	97.8	97.4	100.6	99.4	98.7	93.8	92.5	96.9	-0.4	0.0	-2.2	0.2	-1.0	1.4	3.2	0.3
2003	98.3	97.9	100.1	99.8	98.8	95.9	94.4	97.7	0.5	0.6	-0.5	0.4	0.1	2.3	2.0	0.9
2004	100.0	99.9	100.0	99.9	100.0	100.0	100.0	100.0	1.7	2.0	-0.1	0.1	1.2	4.2	6.0	2.3
2005	100.4	101.3	100.8	99.9	97.8	102.0	100.4	101.7	0.5	1.3	0.8	0.0	-2.2	2.0	0.4	1.7
2006	101.4	102.8	103.5	100.6	96.4	104.0	101.3	102.4	1.0	1.6	2.7	0.7	-1.5	1.9	0.9	0.7
2005 I	99.7	101.1	99.0	100.4	97.5	101.4	100.1	100.5	0.3	1.6	0.4	0.5	-2.4	1.9	0.3	0.8
II	100.0	101.0	99.5	99.6	97.6	101.5	100.2	101.6	0.1	1.7	-0.5	-0.2	-2.5	1.7	0.4	1.0
III	100.7	101.2	101.7	98.5	98.3	102.4	100.5	101.6	0.5	1.1	1.1	-1.3	-2.3	2.4	0.4	1.9
IV	101.3	101.6	102.9	101.1	97.8	102.8	100.8	102.9	1.1	0.9	2.1	1.0	-1.4	2.2	0.7	3.1
2006 I	101.1	102.3	102.6	100.6	96.2	103.7	100.9	102.7	1.4	1.2	3.7	0.3	-1.4	2.3	0.8	2.1
II	101.2	102.7	103.2	100.1	96.4	103.6	101.3	101.8	1.2	1.6	3.7	0.5	-1.2	2.1	1.0	0.1
III	101.5	103.0	103.9	100.8	96.6	104.1	101.4	101.5	0.7	1.8	2.1	2.3	-1.7	1.6	0.9	-0.1
IV	101.9	103.3	104.3	101.0	96.2	104.4	101.7	103.5	0.6	1.6	1.3	-0.2	-1.6	1.5	0.9	0.6
2006 MAR	100.9	102.1	102.4	102.3	95.8	103.6	100.9	102.5	1.2	1.3	3.3	0.6	-1.1	2.2	0.8	0.9
APR	101.5	102.5	103.8	102.0	96.8	103.7	101.2	102.2	1.1	1.5	3.3	-0.5	-1.3	2.3	0.9	0.6
MAY	101.3	102.7	103.7	100.9	96.7	103.6	101.3	101.4	1.1	1.6	3.2	1.1	-0.9	2.1	1.1	-0.4
JUN	100.7	102.8	102.0	97.4	95.8	103.6	101.3	101.7	1.4	1.8	4.7	1.1	-1.4	2.0	1.0	0.2
JUL	101.5	103.1	104.1	99.9	96.7	104.0	101.4	101.3	1.1	1.9	2.2	3.8	-0.6	1.8	0.9	0.1
AUG	101.5	103.0	104.0	101.8	96.6	104.1	101.3	101.5	0.7	1.7	2.1	2.0	-1.8	1.5	0.8	-0.2
SEP	101.4	103.0	103.5	100.6	96.5	104.3	101.5	101.7	0.4	1.8	2.0	1.2	-2.7	1.6	0.9	-0.3
OCT	101.8	103.1	104.2	101.2	96.8	104.5	101.6	102.5	0.4	1.5	1.5	0.5	-1.9	1.6	0.8	-0.2
NOV	101.8	103.2	104.3	101.5	95.7	104.3	101.7	103.6	0.5	1.6	1.3	-0.7	-1.8	1.5	0.8	0.7
DEC	102.1	103.6	104.3	100.3	96.2	104.4	101.7	104.5	0.8	1.7	1.3	-0.2	-1.2	1.5	1.1	1.3
2007 JAN	101.3	104.4	100.6	99.2	95.6	104.9	102.0	103.9	0.2	1.6	-0.8	0.3	-1.3	1.0	1.0	0.9
FEB	101.9	104.8	103.2	100.7	94.9	105.0	102.5	103.7	0.6	2.7	-0.8	-0.1	-1.1	1.2	1.6	1.2

Table IV.4 Other Price Indices

PERIOD	DOMESTIC SUPPLY PRICE INDEX	SINGAPORE MANUFACTURED PRODUCTS PRICE INDEX	IMPORT PRICE INDEX	EXPORT PRICE INDEX	DOMESTIC SUPPLY PRICE INDEX	SINGAPORE MANUFACTURED PRODUCTS PRICE INDEX	IMPORT PRICE INDEX	EXPORT PRICE INDEX
	2000 = 100				YEAR-ON-YEAR % CHANGE			
	1	2	3	4	5	6	7	8
2002	95.2	92.1	96.8	87.3	-3.2	-6.9	-2.1	-7.3
2003	97.1	91.4	97.1	84.2	2.0	-0.8	0.3	-3.6
2004	102.1	95.6	98.7	84.3	5.2	4.6	1.7	0.2
2005	111.9	101.0	103.8	86.1	9.6	5.7	5.2	2.1
2006	117.5	103.4	106.8	87.9	5.0	2.4	2.9	2.1
2005 I	105.1	97.2	99.6	82.9	6.8	4.6	2.6	-1.0
II	111.1	100.9	103.1	85.6	10.1	7.6	4.6	1.4
III	116.0	103.4	106.4	87.9	11.4	6.4	6.5	3.1
IV	115.5	102.6	106.3	87.9	10.1	4.1	6.8	4.7
2006 I	115.8	102.2	106.1	87.2	10.2	5.1	6.5	5.3
II	120.0	104.3	108.6	89.0	8.1	3.4	5.3	4.0
III	120.6	105.7	108.5	89.2	4.0	2.3	2.0	1.5
IV	113.6	101.4	104.1	86.0	-1.6	-1.2	-2.1	-2.2
2006 MAR	116.5	102.1	106.6	87.8	7.2	2.2	5.2	4.0
APR	119.7	103.6	108.5	88.8	7.9	2.0	5.6	3.1
MAY	120.0	104.4	108.6	88.9	9.2	4.2	6.1	5.0
JUN	120.5	104.9	108.9	89.4	7.0	4.0	4.4	3.9
JUL	122.4	106.5	109.8	90.5	7.3	4.6	4.1	3.9
AUG	122.1	106.9	109.3	89.7	5.6	3.8	3.1	2.6
SEP	117.3	103.9	106.3	87.5	-0.8	-1.5	-1.2	-2.0
OCT	114.4	102.6	104.6	86.7	-2.7	-1.7	-2.5	-2.9
NOV	113.0	101.2	103.5	85.7	-1.3	-0.7	-2.3	-2.1
DEC	113.6	100.6	104.1	85.5	-0.8	-1.1	-1.4	-1.6
2007 JAN	110.9	98.8	102.5	84.3	-4.0	-3.0	-3.1	-3.0
FEB	114.1	100.2	104.4	84.6	-1.2	-2.3	-1.3	-2.9

Source: Singapore Department of Statistics

Table IV.5 Government Finance

PERIOD	OPERATING REVENUE							TOTAL	EXPENDITURE		SURPLUS (+)/ DEFICIT (-)		
	TOTAL	TAX REVENUE					NON-TAX REVENUE <sup>1/</sup>		TOTAL	OPERATING	DEVELOPMENT		
		TOTAL	INCOME TAX	ASSET TAX	STAMP DUTY	GST							
		S\$ MILLION											
1=2+7	2	3	4	5	6	7	8=9+10	9	10	11=1-8	12		
2002	25,401	21,484	11,550	1,242	700	2,098	3,917	27,121	19,244	7,877	-1,720	-1.1	
2003	24,643	20,736	10,414	1,243	649	2,724	3,907	27,189	19,236	7,953	-2,546	-1.6	
2004	26,346	22,699	10,218	2,139	898	3,297	3,647	28,418	19,936	8,482	-2,072	-1.1	
2005	28,117	25,201	12,655	1,819	813	3,815	2,915	28,781	20,675	8,107	-665	-0.3	
2006 P	31,072	28,718	14,948	2,052	1,312	3,960	2,354	29,875	23,463	6,412	1,198	0.6	
2005 I	7,916	6,764	3,041	670	192	944	1,152	10,923	7,419	3,504	-3,007	-6.6	
II	6,732	6,158	3,484	365	176	909	574	5,064	3,557	1,507	1,668	3.6	
III	7,361	6,698	3,769	379	224	858	663	5,570	4,232	1,338	1,791	3.7	
IV	6,108	5,580	2,362	405	221	1,104	527	7,224	5,466	1,758	-1,117	-2.1	
2006 I	7,971	7,250	3,298	761	346	944	721	10,775	8,190	2,586	-2,804	-5.5	
II	7,253	6,840	3,682	417	255	1,107	413	5,083	3,957	1,126	2,169	4.3	
III	8,034	7,437	4,237	427	357	828	597	6,496	5,313	1,183	1,539	2.9	
IV P	7,815	7,191	3,732	448	354	1,081	623	7,520	6,003	1,517	294	0.5	

Source: Ministry of Finance

<sup>1/</sup> Excludes repayment of loans and advances, interest income, investment income and capital receipts.

Table IV.6 Balance of Payments

S\$ MILLION

PERIOD	CURRENT ACCOUNT BALANCE					CAPITAL & FINANCIAL ACCOUNT BALANCE						ERRORS & OMISSIONS	OVERALL BALANCE	OFFICIAL FOREIGN RESERVES (END OF PERIOD)
	TOTAL	GOODS BALANCE	SERVICES BALANCE	INCOME BALANCE	CURRENT TRANSFER (NET)	TOTAL	CAPITAL ACCOUNT (NET)	FINANCIAL ACCOUNT (NET)						
								DIRECT INVESTMENT	PORTFOLIO INVESTMENT	OTHER INVESTMENT				
1=2 TO 5	2	3	4	5	6=7+8	7	8=9 TO 11	9	10	11	12	13=1+6+12	14	
2002	21,654	33,580	-6,522	-3,370	-2,034	-18,737	-287	-18,451	8,723	-23,536	-3,637	-630	2,287	142,721.3
2003	38,909	51,506	-6,330	-4,296	-1,971	-30,736	-292	-30,444	15,626	-16,686	-29,384	3,601	11,775	163,189.5
2004	36,415	55,532	-5,945	-11,228	-1,944	-12,868	-310	-12,558	19,868	-11,902	-20,524	-3,113	20,433	183,844.0
2005	47,617	61,150	-3,898	-7,618	-2,018	-31,923	-336	-31,588	16,593	-13,792	-34,389	4,704	20,397	193,601.2
2006 P	57,661	71,054	-4,564	-6,633	-2,197	-33,262	-360	-32,902	24,757	-22,536	-35,123	1,601	26,000	210,529.0
2005 I	9,225	12,150	-876	-1,543	-505	-7,275	-78	-7,196	4,829	-3,321	-8,704	2,827	4,778	186,771.5
II	11,528	14,672	-1,351	-1,309	-485	-3,558	-91	-3,466	4,876	-3,329	-5,013	2,010	9,981	195,370.5
III	14,345	17,112	-423	-1,840	-504	-14,277	-84	-14,192	4,060	-4,109	-14,144	1,222	1,290	195,884.8
IV	12,518	17,216	-1,247	-2,927	-524	-6,815	-82	-6,733	2,828	-3,033	-6,529	-1,356	4,347	193,601.2
2006 I	13,239	17,469	-1,999	-1,677	-554	-5,784	-86	-5,698	6,271	-4,163	-7,806	933	8,388	197,428.4
II	14,817	17,275	-1,040	-902	-516	-9,881	-97	-9,785	9,370	-10,903	-8,252	180	5,116	203,111.2
III	14,289	17,352	-896	-1,616	-551	-9,078	-98	-8,980	4,144	-4,099	-9,026	-1,205	4,006	205,814.3
IV P	15,317	18,959	-629	-2,438	-575	-8,519	-79	-8,439	4,972	-3,372	-10,040	1,692	8,491	210,529.0

Source: Singapore Department of Statistics

Table IV.7 Official Foreign Reserves <sup>1/</sup>

END OF PERIOD	TOTAL FOREIGN RESERVES	SPECIAL DRAWING RIGHTS	RESERVE POSITION IN THE IMF	GOLD AND FOREIGN EXCHANGE	TOTAL FOREIGN RESERVES
	S\$ MILLION				US\$ MILLION
	1=2+3+4	2	3	4	5
2002	142,621.1	305.8	825.0	141,490.3	82,218.7
2003	163,053.5	352.1	956.2	161,745.2	96,244.1
2004	183,464.0	474.8	712.4	182,276.8	112,574.9
2005	192,813.0	477.2	291.2	192,044.6	116,172.6
2006	208,991.8	487.5	200.1	208,304.2	136,260.9
2005 FEB	184,222.9	476.1	686.5	183,060.3	113,630.2
MAR	186,345.6	476.6	660.3	185,208.7	112,752.0
APR	190,009.0	478.9	624.1	188,906.0	116,319.7
MAY	192,976.0	484.1	622.9	191,869.0	115,715.9
JUN	194,835.3	475.0	556.0	193,804.3	114,898.3
JUL	192,549.8	475.0	556.2	191,518.6	115,965.4
AUG	196,135.3	482.5	556.2	195,096.6	116,050.0
SEP	195,301.0	482.4	507.5	194,311.1	115,249.9
OCT	195,898.6	482.4	507.6	194,908.6	115,220.1
NOV	194,017.7	488.2	486.9	193,042.6	114,580.2
DEC	192,813.0	477.2	291.2	192,044.6	116,172.6
2006 JAN	193,425.9	477.2	291.2	192,657.5	119,745.8
FEB	193,386.5	475.5	251.9	192,659.1	119,740.4
MAR	196,584.2	471.2	228.3	195,884.7	121,766.0
APR	200,405.0	470.0	226.0	199,709.0	127,397.2
MAY	201,370.3	475.9	226.4	200,668.0	128,398.7
JUN	202,389.5	479.5	236.1	201,673.9	128,315.9
JUL	203,632.4	479.5	236.3	202,916.6	129,481.2
AUG	204,437.6	486.8	236.8	203,714.0	130,278.9
SEP	205,095.8	486.8	239.3	204,369.7	128,945.4
OCT	205,660.2	484.0	210.1	204,966.1	131,429.0
NOV	208,280.2	487.5	200.1	207,592.6	135,341.6
DEC	208,991.8	487.5	200.1	208,304.2	136,260.9
2007 JAN	206,764.3	482.7	173.8	206,107.8	134,573.2
FEB P	209,391.2	489.0	173.8	208,728.4	137,058.6

<sup>1/</sup> Prior to May 1999, Singapore's official foreign reserves were valued at book cost. With effect from May 1999, the book value of foreign reserve assets are translated at market exchange rates prevailing at the end of each reporting month.